

# DAILY REPORT



For more information, email [trading\\_sales@tsx.com](mailto:trading_sales@tsx.com)

April 25, 2023

Indices	April 25 Close	Previous Close	Change	% Change
S&P/TSX Composite Index	20,439.87	20,676.74		-1.15 %
S&P/TSX 60 Index	1,232.31	1,247.04		-1.18 %
S&P/TSX Venture Composite	603.78	610.18		-1.05 %
S&P/TSX Completion Index	1,201.24	1,213.33		-1.00 %
S&P/TSX Smallcap Index	703.80	712.06		-1.16 %

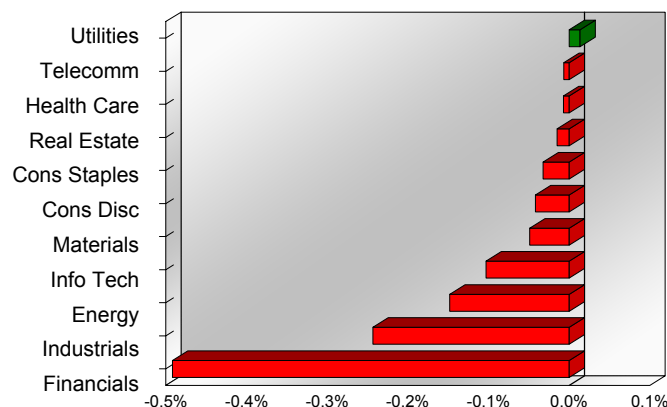
S&P/TSX Composite Index		
Advancers	Decliners	Unchanged
52	178	2

S&P/TSX Composite Index			
Top 10 Index Contributors		Top 10 Index Detractors	
Constituent	Index Contribution	Constituent	Index Contribution
TRP	4.49	CNR	-27.22
ABX	3.76	TD	-20.21
FNV	3.51	BN	-18.09
CCO	3.13	RY	-16.44
AEM	2.73	SHOP	-13.76
WPM	2.28	CP	-12.46
ENB	2.00	BMO	-12.41
EMA	1.40	CM	-11.28
FTS	1.29	BNS	-10.19
BCE	1.29	CNQ	-9.58

S&P/TSX Composite Index			
Top 10 Advancers		Top 10 Decliners	
Constituent	Return	Constituent	Return
SII	4.86%	HBM	-6.32%
DML	3.68%	CTS	-5.80%
CCO	2.89%	ASTL	-5.57%
NXE	2.51%	BHC	-4.79%
OR	2.33%	BBU.UN	-4.65%
ATS	2.24%	TVE	-4.56%
BLX	2.17%	TOY	-4.39%
EDR	1.47%	BN	-4.16%
WPK	1.40%	CVE	-4.14%
CU	1.35%	LSPD	-4.11%

S&P/TSX Composite Index				
Sector	# of Index Constituents	Weight	Market Cap (\$B)	Index Contribution
Utilities	16	4.61 %	\$135.69	2.79
Communication Services	5	4.38 %	\$128.79	-1.39
Health Care	6	0.35 %	\$10.28	-1.44
Real Estate	21	2.44 %	\$71.91	-3.09
Consumer Staples	11	4.31 %	\$126.64	-6.67
Consumer Discretionary	15	3.65 %	\$107.39	-8.63
Materials	50	12.75 %	\$374.91	-10.13
Information Technology	12	6.57 %	\$193.25	-21.32
Energy	40	17.16 %	\$504.90	-30.65
Industrials	27	13.88 %	\$408.32	-50.28
Financials	29	29.90 %	\$879.43	-101.67
<b>S&amp;P/TSX Composite Index</b>	<b>232</b>	<b>100.00 %</b>	<b>\$2,941.51</b>	<b>-232.49</b>

S&P/TSX Composite Index - Sectors Returns



This report is published by TSX Inc. TSX Inc. does not guarantee either the completeness or the accuracy of this information. The information contained in this report is provided for informational purposes only and you agree not to rely upon the information contained in this report for any trading, business or financial purpose. These sheets are printed in Canada and issued by TSX Inc. under the express condition, to which everyone receiving or making use thereof assents, that no liability shall be incurred by TSX Inc. or its affiliated companies or any other vendor or donor, including, without limitation, for reliance on or for any errors or inaccuracies in this report. Neither TMX Group Limited, TSX Inc., nor any of their affiliated companies, guarantees the completeness of the information contained in this document and are not responsible for any errors or omission in or your use of, or reliance on, the information. This publication is under copyright. © 2016 TSX Inc. All rights reserved. Do not copy, distribute, sell or modify this publication without the prior written consent of TSX Inc. <http://www.tsx.com/trading>

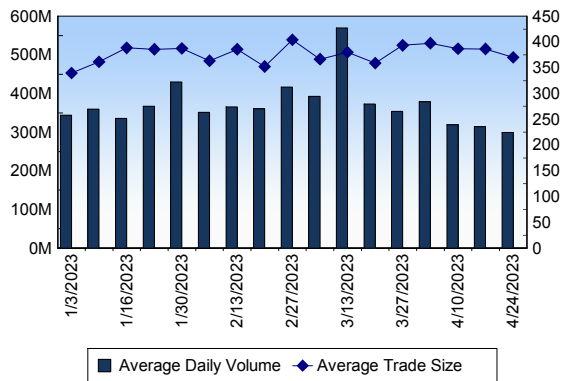
## TSX

Daily Volume	284,408,784
Daily Value	\$9,656,152,725
Daily Trades	870,016
Daily Symbols Traded	2,006

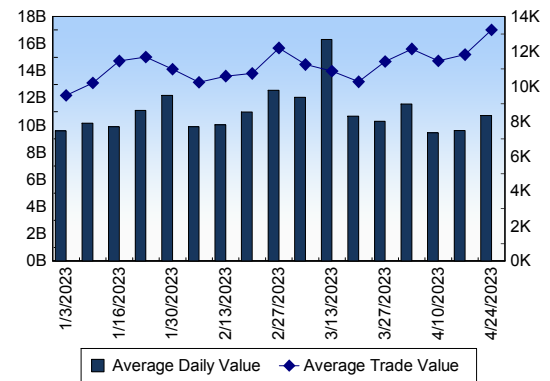
## TSX ANONYMOUS TRADING

Daily Volume	122,586,762
Daily Value	\$4,277,583,625
Average Trade Size	294
% TSX Volume	43.10 %

### TSX Volume



### TSX Value ( in Canadian Dollars )



### Top 20 TSX Symbols by Volume

Symbol	TSX Volume	TSX Value
MFC	9,067,838	\$234,748,852
RY	8,851,653	\$1,172,623,026
T	6,498,453	\$186,236,825
CVE	6,492,165	\$151,880,295
TVE	5,193,236	\$19,697,495
TD	5,175,036	\$421,570,444
BMO	5,152,885	\$626,485,710
SU	4,930,237	\$201,421,578
ENB	4,835,855	\$259,146,355
BNS	4,712,606	\$314,039,716
TRP	4,134,732	\$229,765,977
CM	3,905,879	\$218,783,625
ATH	3,659,540	\$12,099,206
BTE	3,083,204	\$15,883,168
CPG	3,072,973	\$30,643,918
XIU	2,890,720	\$90,618,291
SHOP	2,843,593	\$181,480,055
BTO	2,800,568	\$15,379,661
ABX	2,698,502	\$70,194,186
CNR	2,619,469	\$423,689,685

### Top 20 TSX Symbols by Value

Symbol	TSX Volume	TSX Value
RY	8,851,653	\$1,172,623,026
BMO	5,152,885	\$626,485,710
CNR	2,619,469	\$423,689,685
TD	5,175,036	\$421,570,444
BNS	4,712,606	\$314,039,716
ENB	4,835,855	\$259,146,355
MFC	9,067,838	\$234,748,852
TRP	4,134,732	\$229,765,977
CM	3,905,879	\$218,783,625
CNQ	2,567,850	\$207,022,420
SU	4,930,237	\$201,421,578
T	6,498,453	\$186,236,825
SHOP	2,843,593	\$181,480,055
NA	1,748,549	\$171,422,203
CVE	6,492,165	\$151,880,295
TOU	2,392,119	\$144,671,526
SLF	1,733,843	\$113,148,490
TECK.B	1,764,483	\$104,939,197
BCE	1,618,855	\$104,578,096
CP	886,611	\$95,653,028

### ETF Trading

Daily Volume	29,297,384	Average Trade Value	\$13,264
Daily Value	\$695,284,703	Average Trade Size	559
# Trades	52,420	# of ETFs Traded	836

### Top 10 ETFs by TSX Volume

Symbol	Market Volume	Market Value
XIU	2,890,720	\$90,618,291
HNU	2,424,704	\$40,701,119
ZEB	1,934,825	\$65,948,883
XEG	1,195,522	\$18,174,290
HOU	1,148,962	\$15,492,924
FDY	981,610	\$1,028,683
HND	804,911	\$52,059,817
HSU	676,457	\$9,520,964
HOD	621,824	\$6,448,273
HQD	578,396	\$15,561,368

### Top 10 ETFs by TSX Value

Symbol	Market Volume	Market Value
XIU	2,890,720	\$90,618,291
ZEB	1,934,825	\$65,948,883
HND	804,911	\$52,059,817
HNU	2,424,704	\$40,701,119
VFV	220,568	\$21,825,247
XEG	1,195,522	\$18,174,290
XFN	368,501	\$16,615,912
ZSP	270,617	\$16,515,524
HQD	578,396	\$15,561,368
HOU	1,148,962	\$15,492,924

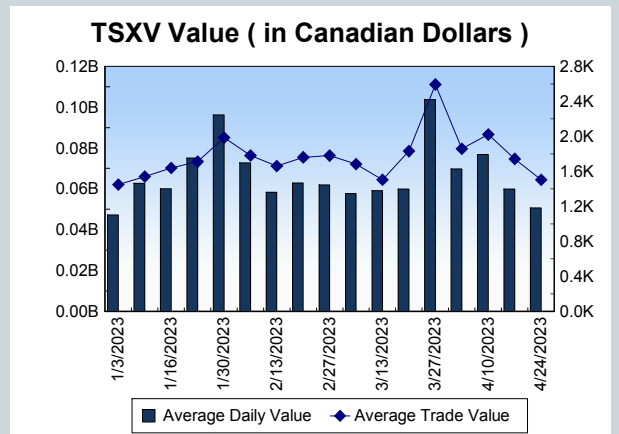
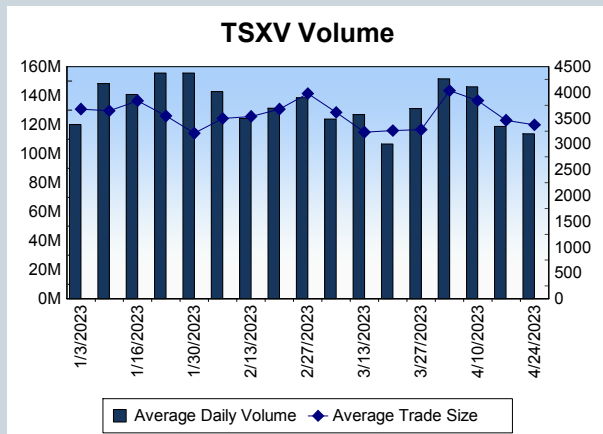
<b>Block Trades</b>	<b>Non Block Trades</b>
1,031	868,985

Top 5 Block Trade Brokers by Volume	
Broker	TSX Block Volume
GOLDMAN SACHS CANADA I	14,005,600
RBC CAPITAL MARKETS	12,239,900
SCOTIA CAPITAL INC.	10,741,500
NATIONAL BANK FINANCIAL	9,335,750
BMO NESBITT BURNS INC.	9,105,200

Top 5 Block Trade Symbols by Volume	
Symbol	TSX Block Volume
RY	6,678,900
MFC	6,514,300
T	3,517,300
BMO	3,288,800
ENB	2,318,000

TSXV	
Daily Volume	104,020,099
Daily Value	\$51,037,283
Daily Trades	33,058
Daily Symbols Traded	1,127

TSXV ANONYMOUS TRADING	
Daily Volume	54,184,640
Daily Value	\$26,597,766
Average Trade Size	3,260
% TSXV Volume	52.09%



Top 20 TSXV Symbols by Volume		
Symbol	TSXV Volume	TSXV Value
XND	3,110,696	\$46,710
REVO	2,844,118	\$298,345
BRG	1,507,615	\$136,656
SBM	1,352,666	\$220,573
JJ	1,319,000	\$101,020
MCF	1,259,811	\$582,172
TORC	1,238,500	\$224,155
DLTA	1,096,384	\$576,373
GXU	1,078,393	\$162,519
PTU	1,054,335	\$47,465
PBX	1,016,300	\$35,402
CNL	1,003,954	\$6,017,292
KTN	986,826	\$110,045
MATE	913,000	\$32,255
QUIS	824,678	\$362,089
ENEV	800,254	\$8,003
ORM	797,390	\$162,579
AKMY	785,600	\$23,606
HSTR	774,083	\$277,456
AEC	724,400	\$39,867

Top 20 TSXV Symbols by Value		
Symbol	TSXV Volume	TSXV Value
CNL	1,003,954	\$6,017,292
LMN	176,801	\$3,162,575
FOM	502,280	\$1,890,400
NGEX	256,951	\$1,618,246
LTH	653,900	\$1,593,507
TOI	18,109	\$1,557,975
HIVE	324,675	\$1,371,275
CNC	644,443	\$968,455
NFG	158,670	\$959,285
CRE	405,571	\$904,247
ATX	567,627	\$869,520
ABR	239,871	\$749,878
LI	253,984	\$724,967
QIPT	80,978	\$640,843
SGML	13,589	\$639,993
PMET	50,158	\$627,839
MCF	1,259,811	\$582,172
DLTA	1,096,384	\$576,373
SOIL	180,336	\$445,977
BRW	537,809	\$444,330

Dark TSX/TSXV Trading			
Volume	20,297,580	Daily Trades	98,859
Value	768,050,809	Daily Symbols Traded	1,238