



March 9, 2017

For more information, email [trading\\_sales@tsx.com](mailto:trading_sales@tsx.com)  
 Visit our blog at <http://exchange.tmx.com/>

Indices	March 9 Close	Previous Close	Change	% Change
S&P/TSX Composite Index	15,496.84			%
S&P/TSX 60 Index	918.35			%
S&P/TSX Venture Composite	788.85			%
S&P/TSX Completion Index	961.51			%
S&P/TSX Smallcap Index	641.25			%

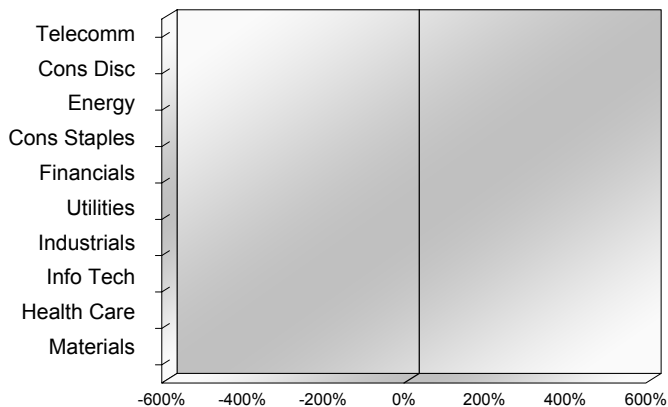
S&P/TSX Composite Index		
Advancers	Decliners	Unchanged
0	0	0

S&P/TSX Composite Index			
Top 10 Index Contributors		Top 10 Index Detractors	
Constituent	Index Contribution	Constituent	Index Contribution

S&P/TSX Composite Index			
Top 10 Advancers		Top 10 Decliners	
Constituent	Return	Constituent	Return
	%		%

S&P/TSX Composite Index				
Sector	# of Index Constituents	Weight	Market Cap (\$B)	Index Contribution
Telecommunication Services	4	%	\$98.94	
Consumer Discretionary	22	%	\$103.91	
Energy	50	%	\$440.39	
Consumer Staples	11	%	\$77.52	
Financials	27	%	\$740.22	
Utilities	14	%	\$59.31	
Industrials	26	%	\$186.04	
Information Technology	12	%	\$57.75	
Health Care	5	%	\$11.02	
Materials	56	%	\$241.78	
<b>S&amp;P/TSX Composite Index</b>	<b>227</b>	<b>%</b>	<b>\$2,016.87</b>	

S&P/TSX Composite Index - Sectors Returns



This report is published by TSX Inc. TSX Inc. does not guarantee either the completeness or the accuracy of this information. The information contained in this report is provided for informational purposes only and you agree not to rely upon the information contained in this report for any trading, business or financial purpose. These sheets are printed in Canada and issued by TSX Inc. under the express condition, to which everyone receiving or making use thereof assents, that no liability shall be incurred by TSX Inc. or its affiliated companies or any other vendor or donor, including, without limitation, for reliance on or for any errors or inaccuracies in this report. Neither TMX Group Limited, TSX Inc., nor any of their affiliated companies, guarantees the completeness of the information contained in this document and are not responsible for any errors or omission in or your use of, or reliance on, the information. This publication is under copyright. © 2015 TSX Inc. All rights reserved. Do not copy, distribute, sell or modify this publication without the prior written consent of TSX Inc. [www.tmx.com/trading](http://www.tmx.com/trading)

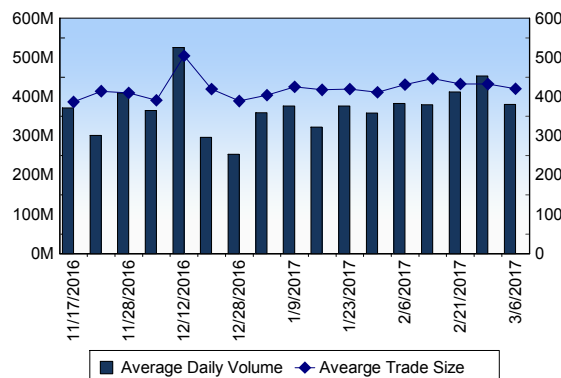
## TSX

Daily Volume	392,820,697
Daily Value	\$5,981,459,857
Daily Trades	940,966
Daily Symbols Traded	1,857

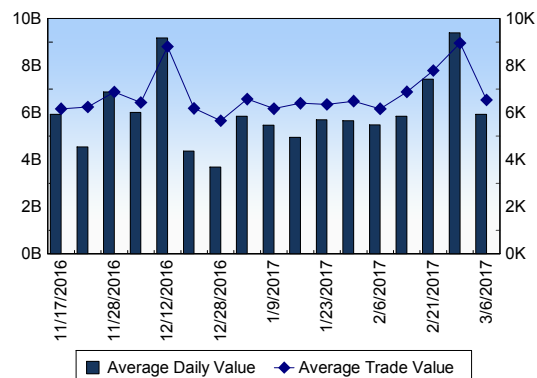
## TSX ANONYMOUS TRADING

Daily Volume	143,419,448
Daily Value	\$2,280,331,961
Average Trade Size	363
% TSX Volume	36.51 %

### TSX Volume



### TSX Value ( in Canadian Dollars )



### Top 20 TSX Symbols by Volume

Symbol	TSX Volume	TSX Value
BBD.B	22,792,175	\$47,485,631
ECA	9,641,875	\$135,289,678
CNQ	8,179,623	\$345,619,795
BTE	7,464,791	\$34,068,632
HOU	7,216,714	\$49,860,817
POT	4,510,389	\$106,839,943
XEG	4,374,996	\$54,275,455
YRI	4,346,862	\$14,669,778
LUN	4,289,755	\$32,148,790
BTO	4,189,492	\$15,863,167
SPE	4,112,761	\$10,228,216
SU	4,020,909	\$162,102,222
HOD	3,778,376	\$41,993,242
MFC	3,518,024	\$85,628,838
K	3,418,818	\$14,920,511
XIU	3,399,873	\$78,374,060
MEG	3,371,159	\$22,027,566
TCW	3,356,367	\$13,744,494
CPG	3,342,170	\$47,213,613
BIR	3,338,166	\$22,177,214

### Top 20 TSX Symbols by Value

Symbol	TSX Volume	TSX Value
CNQ	8,179,623	\$345,619,795
TD	2,604,476	\$182,634,978
RY	1,684,339	\$165,812,154
SU	4,020,909	\$162,102,222
ENB	2,844,822	\$157,384,227
ECA	9,641,875	\$135,289,678
BNS	1,502,736	\$119,030,346
POT	4,510,389	\$106,839,943
BCE	1,637,934	\$95,380,248
CNR	981,459	\$95,149,317
CM	762,364	\$91,358,407
AGU	679,331	\$89,764,549
BMO	834,194	\$85,816,024
MFC	3,518,024	\$85,628,838
TRP	1,343,803	\$82,658,229
XIU	3,399,873	\$78,374,060
NA	1,131,299	\$66,033,334
BMO.PR.C	2,599,232	\$65,812,727
CP	301,944	\$60,188,601
ABX	2,390,851	\$57,445,277

## ETF Trading

Daily Volume	40,123,845	Average Trade Value	\$11,809
Daily Value	\$575,729,833	Average Trade Size	823
# Trades	48,752	# of ETFs Traded	445

### Top 10 ETFs by TSX Volume

Symbol	Market Volume	Market Value
HOU	7,216,714	\$49,860,817
XEG	4,374,996	\$54,275,455
HOD	3,778,376	\$41,993,242
XIU	3,399,873	\$78,374,060
HGD	2,265,721	\$21,919,807
HNU	2,051,590	\$15,547,097
HND	1,673,278	\$20,275,314
ZMT	1,441,495	\$14,022,799
HGU	1,433,806	\$21,834,080
HVU	957,166	\$8,670,745

### Top 10 ETFs by TSX Value

Symbol	Market Volume	Market Value
XIU	3,399,873	\$78,374,060
XEG	4,374,996	\$54,275,455
HOU	7,216,714	\$49,860,817
HOD	3,778,376	\$41,993,242
HXU	773,683	\$25,646,664
HGD	2,265,721	\$21,919,807
HGU	1,433,806	\$21,834,080
ZEB	709,817	\$20,364,912
HND	1,673,278	\$20,275,314
HNU	2,051,590	\$15,547,097

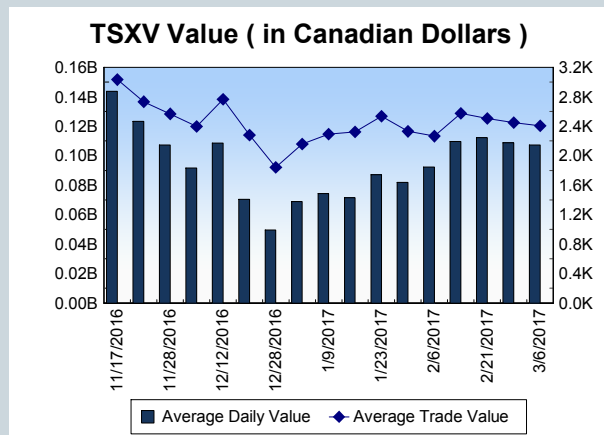
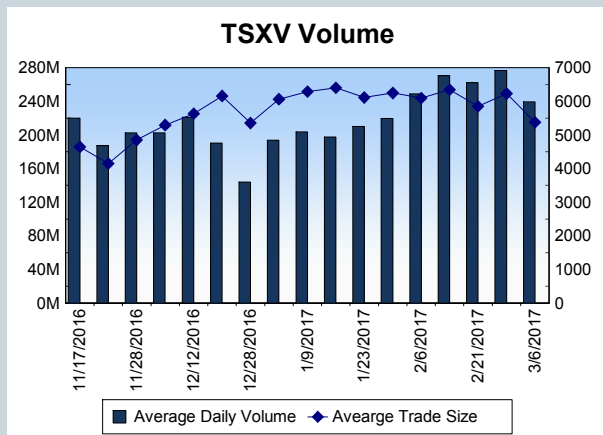
<b>Block Trades</b>	<b>Non Block Trades</b>
1,233	939,733

Top 5 Block Trade Brokers by Volume	
Broker	TSX Block Volume
CIBC WORLD MARKETS INC.	17,358,500
TD SECURITIES INC.	12,395,500
CORMARK SECURITIES INC.	5,015,000
RBC CAPITAL MARKETS	4,695,300
CANACCORD GENUITY CORI	4,317,700

Top 5 Block Trade Symbols by Volume	
Symbol	TSX Block Volume
BBD.B	12,043,600
BMO.PR.C	1,730,800
SPE	1,608,900
ECA	1,597,000
CHE.UN	1,388,100

TSXV	
Daily Volume	234,660,639
Daily Value	\$97,310,977
Daily Trades	37,689
Daily Symbols Traded	1,167

TSXV ANONYMOUS TRADING	
Daily Volume	84,439,052
Daily Value	\$35,435,485
Average Trade Size	6,280
% TSXV Volume	35.98%



Top 20 TSXV Symbols by Volume		
Symbol	TSXV Volume	TSXV Value
PHM	14,778,090	\$3,390,409
MRS	10,278,743	\$1,081,477
TTM	9,682,001	\$531,283
CXV	8,318,513	\$821,922
SEK	7,068,700	\$415,318
VPT	5,787,073	\$2,428,634
ACB	3,961,057	\$9,430,669
MIR	3,702,185	\$159,766
BFD	3,291,500	\$524,900
NOL.H	2,770,815	\$195,287
AVA	2,289,519	\$876,889
APH	2,177,382	\$14,217,804
ZMD	2,056,750	\$67,864
HRL	1,901,000	\$76,040
QIC	1,829,574	\$146,858
IRI	1,665,000	\$45,555
QNC	1,648,287	\$212,267
PST	1,576,361	\$147,810
FMS	1,476,966	\$111,360
SCG	1,431,154	\$264,279

Top 20 TSXV Symbols by Value		
Symbol	TSXV Volume	TSXV Value
APH	2,177,382	\$14,217,804
ACB	3,961,057	\$9,430,669
MJN	1,312,392	\$3,878,625
PHM	14,778,090	\$3,390,409
RUF.UN	327,231	\$2,795,415
EMC	967,592	\$2,631,063
OGI	1,224,526	\$2,627,189
VPT	5,787,073	\$2,428,634
NXO	928,497	\$2,051,042
LMC.R	652,100	\$1,764,918
CRE	1,422,662	\$1,247,159
SNS	813,148	\$1,120,768
MRS	10,278,743	\$1,081,477
BUS	371,146	\$988,203
LIX	561,398	\$927,632
AVA	2,289,519	\$876,889
CXV	8,318,513	\$821,922
PAT	749,834	\$763,724
GPY	483,354	\$756,994
TWM	558,786	\$748,337

Dark TSX/TSXV Trading			
Volume	13,276,890	Daily Trades	39,931
Value	247,627,617	Daily Symbols Traded	1,089