



January 12, 2016

For more information, email trading_sales@tsx.com
 Visit our blog at <http://exchange.tmx.com/>

Indices	January 12 Close	Previous Close	Change	% Change
S&P/TSX Composite Index	12,373.90	12,319.25	54.66	0.44 %
S&P/TSX 60 Index	728.17	723.44	4.73	0.65 %
S&P/TSX Venture Composite	500.32	507.32	-6.99	-1.38 %
S&P/TSX Completion Index	782.53	784.33	-1.80	-0.23 %
S&P/TSX Smallcap Index	450.47	454.07	-3.60	-0.79 %

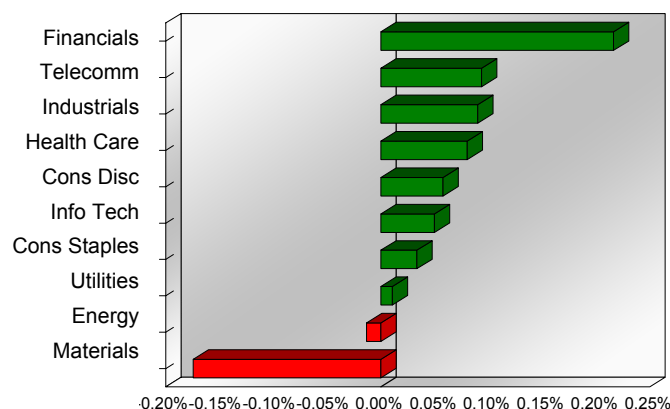
S&P/TSX Composite Index		
Advancers	Decliners	Unchanged
109	124	7

S&P/TSX Composite Index			
Top 10 Index Contributors		Top 10 Index Detractors	
Constituent	Index Contribution	Constituent	Index Contribution
TD	14.89	CNQ	-7.05
VRX	10.18	ELD	-4.73
CNR	9.08	G	-3.10
BCE	7.63	ABX	-2.96
RY	6.02	SLW	-2.54
SU	5.75	FM	-1.86
TRP	5.53	MFC	-1.72
GIB.A	3.51	FNV	-1.70
ATD.B	3.33	BNS	-1.34
AGU	3.24	WCP	-1.28

S&P/TSX Composite Index			
Top 10 Advancers		Top 10 Decliners	
Constituent	Return	Constituent	Return
COS	4.70%	ELD	-19.04%
CMG	4.40%	BNP	-11.76%
GC	4.16%	BTE	-11.71%
BAD	4.12%	MEG	-9.89%
SJ	3.97%	CFP	-9.76%
CG	3.96%	POU	-9.17%
DOL	3.54%	FM	-8.85%
IT	3.45%	HBM	-8.56%
VRX	3.28%	SSO	-7.81%
QBR.B	3.09%	PGF	-7.23%

S&P/TSX Composite Index				
Sector	# of Index Constituents	Weight	Market Cap (\$B)	Index Contribution
Financials	46	38.47 %	\$599.35	26.65
Telecommunication Services	4	5.77 %	\$90.83	11.53
Industrials	23	8.24 %	\$128.98	11.09
Health Care	5	2.91 %	\$46.29	9.89
Consumer Discretionary	26	6.77 %	\$105.71	7.11
Information Technology	13	3.17 %	\$49.81	6.12
Consumer Staples	10	4.64 %	\$72.38	4.11
Utilities	12	2.39 %	\$37.23	1.32
Energy	55	17.83 %	\$276.04	-1.66
Materials	46	9.82 %	\$149.35	-21.50
S&P/TSX Composite Index	240	100.00 %	\$1,555.97	54.66

S&P/TSX Composite Index - Sectors Returns



This report is published by TSX Inc. TSX Inc. does not guarantee either the completeness or the accuracy of this information. The information contained in this report is provided for informational purposes only and you agree not to rely upon the information contained in this report for any trading, business or financial purpose. These sheets are printed in Canada and issued by TSX Inc. under the express condition, to which everyone receiving or making use thereof assents, that no liability shall be incurred by TSX Inc. or its affiliated companies or any other vendor or donor, including, without limitation, for reliance on or for any errors or inaccuracies in this report. Neither TMX Group Limited, TSX Inc., nor any of their affiliated companies, guarantees the completeness of the information contained in this document and are not responsible for any errors or omission in or your use of, or reliance on, the information. This publication is under copyright. © 2015 TSX Inc. All rights reserved. Do not copy, distribute, sell or modify this publication without the prior written consent of TSX Inc. www.tmx.com/trading

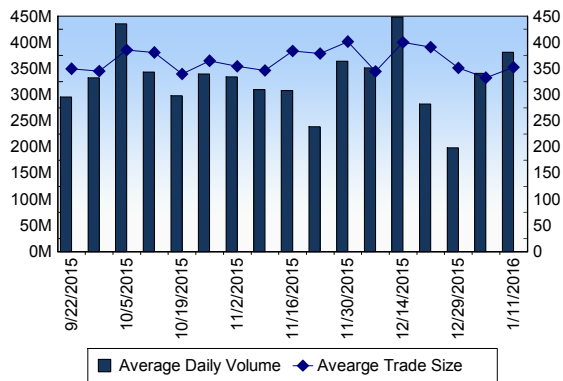
TSX

Daily Volume	411,105,054
Daily Value	\$5,618,833,185
Daily Trades	1,142,069
Daily Symbols Traded	1,883

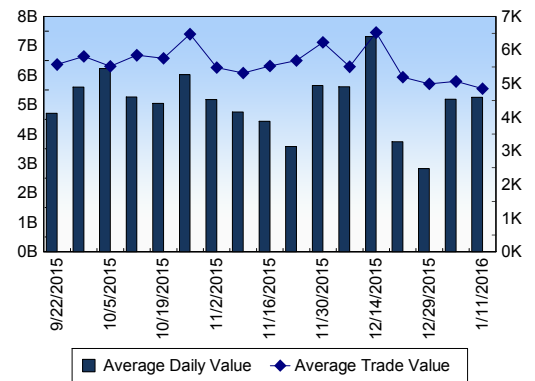
TSX ANONYMOUS TRADING

Daily Volume	146,774,318
Daily Value	\$2,272,932,821
Average Trade Size	301
% TSX Volume	35.70 %

TSX Volume



TSX Value (in Canadian Dollars)



Top 20 TSX Symbols by Volume

Symbol	TSX Volume	TSX Value
RMX	12,208,955	\$408,902
BTE	11,202,314	\$31,176,326
FM	10,527,054	\$36,806,863
PMT	10,375,917	\$367,408
HOU	8,418,452	\$28,571,960
CNQ	6,173,519	\$154,424,416
ECA	5,818,868	\$38,109,208
ELD	5,774,420	\$20,532,246
TCK.B	4,991,068	\$19,753,279
BTO	4,591,416	\$5,462,086
ABX	4,486,377	\$50,176,427
TD	4,465,808	\$232,927,905
CPG	4,047,292	\$52,404,531
SGY	4,035,122	\$6,909,643
POT	3,862,677	\$85,133,154
WCP	3,690,339	\$25,908,856
MFC	3,688,055	\$69,445,700
BBD.B	3,649,017	\$4,495,950
TOG	3,614,262	\$14,764,592
PLI	3,526,172	\$10,525,743

Top 20 TSX Symbols by Value

Symbol	TSX Volume	TSX Value
TD	4,465,808	\$232,927,905
RY	2,765,805	\$195,778,936
CNQ	6,173,519	\$154,424,416
BNS	2,733,904	\$147,583,425
CM	1,474,874	\$131,139,802
BCE	2,336,914	\$129,526,843
CNR	1,586,768	\$117,934,853
BMO	1,372,883	\$101,631,137
SU	3,125,197	\$99,948,013
TRP	2,154,102	\$96,123,224
ENB	2,159,190	\$95,527,754
POT	3,862,677	\$85,133,154
DOL	969,765	\$71,865,043
VRX	576,185	\$71,464,772
MFC	3,688,055	\$69,445,700
CP	383,797	\$61,028,027
SLF	1,499,795	\$59,897,639
ATD.B	985,749	\$59,388,187
IMO	1,362,693	\$55,877,238
G	3,387,895	\$54,737,783

ETF Trading

Daily Volume	31,791,154	Average Trade Value	\$8,407
Daily Value	\$421,584,654	Average Trade Size	634
# Trades	50,149	# of ETFs Traded	397

Top 10 ETFs by TSX Volume

Symbol	Market Volume	Market Value
HOU	8,418,452	\$28,571,960
XIU	2,826,536	\$51,624,582
XEG	1,619,181	\$14,533,601
HVI	1,524,676	\$12,204,105
HNU	1,454,320	\$19,864,904
HOD	1,419,369	\$39,533,177
HGU	1,364,244	\$23,344,774
HGD	1,108,206	\$12,187,714
HXD	875,377	\$10,533,115
HND	713,656	\$12,524,712

Top 10 ETFs by TSX Value

Symbol	Market Volume	Market Value
XIU	2,826,536	\$51,624,582
HOD	1,419,369	\$39,533,177
HOU	8,418,452	\$28,571,960
HGU	1,364,244	\$23,344,774
HNU	1,454,320	\$19,864,904
HVU	453,191	\$19,744,478
HSU	692,453	\$18,848,967
XEG	1,619,181	\$14,533,601
XSP	629,061	\$13,934,516
HND	713,656	\$12,524,712

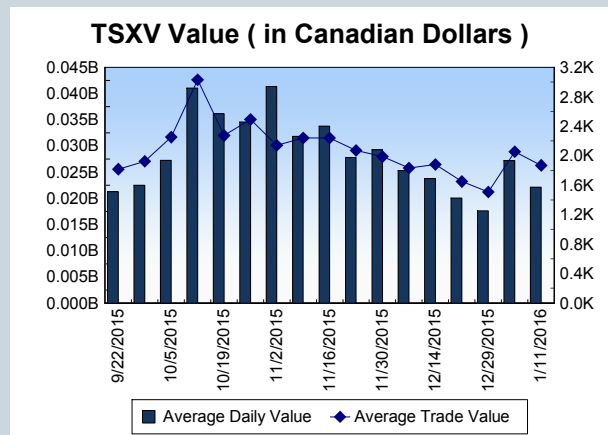
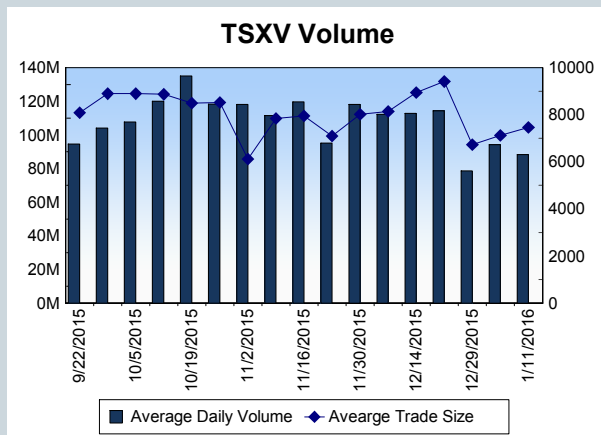
Block Trades	Non Block Trades
910	1,141,159

Top 5 Block Trade Brokers by Volume	
Broker	TSX Block Volume
TD SECURITIES INC.	9,605,000
RBC CAPITAL MARKETS	5,916,900
BMO NESBITT BURNS INC.	3,319,900
CIBC WORLD MARKETS INC.	3,304,500
NATIONAL BANK FINANCIAL	2,921,900

Top 5 Block Trade Symbols by Volume	
Symbol	TSX Block Volume
BTE	1,472,900
HOU	1,197,900
BBD.B	871,500
TD	849,100
POT	838,700

TSXV	
Daily Volume	95,900,676
Daily Value	\$23,187,367
Daily Trades	11,532
Daily Symbols Traded	873

TSXV ANONYMOUS TRADING	
Daily Volume	36,061,068
Daily Value	\$8,038,960
Average Trade Size	8,547
% TSXV Volume	37.60%



Top 20 TSXV Symbols by Volume		
Symbol	TSXV Volume	TSXV Value
SNM	7,176,400	\$358,875
TON	3,705,000	\$18,525
PHM	2,774,738	\$1,832,440
NAI	1,873,300	\$9,367
GBR	1,645,000	\$16,640
LND	1,581,900	\$138,769
WRR	1,554,250	\$49,119
FCV	1,380,200	\$79,098
NXE	1,232,250	\$959,730
CRS	1,214,840	\$64,346
IKM	1,164,650	\$627,694
CST	1,113,565	\$205,077
ESU	1,064,669	\$159,454
ELT	1,054,400	\$96,658
LRN	1,036,000	\$34,570
LXE	1,035,380	\$827,544
PNE	1,029,951	\$853,667
MV	1,018,000	\$39,555
FF	890,454	\$350,794
CXV	817,868	\$225,572

Top 20 TSXV Symbols by Value		
Symbol	TSXV Volume	TSXV Value
PHM	2,774,738	\$1,832,440
CGC	389,027	\$1,114,878
NXE	1,232,250	\$959,730
PNE	1,029,951	\$853,667
LXE	1,035,380	\$827,544
SKX	640,526	\$669,305
IKM	1,164,650	\$627,694
PTK	571,854	\$536,832
MPH	93,601	\$505,488
RMC	117,469	\$466,697
NFD.A	30,000	\$465,000
SNM	7,176,400	\$358,875
RUF.UN	51,416	\$357,707
FF	890,454	\$350,794
CAC	516,817	\$340,844
TNC	168,873	\$318,186
PTA	244,660	\$305,176
APH	214,702	\$258,618
SYZ	32,057	\$258,133
PTG	460,535	\$234,737

Dark TSX/TSXV Trading			
Volume	10,024,400	Daily Trades	33,939
Value	219,852,146	Daily Symbols Traded	1,130