



January 14, 2016

For more information, email trading_sales@tsx.com
 Visit our blog at <http://exchange.tmx.com/>

Indices	January 14 Close	Previous Close	Change	% Change
S&P/TSX Composite Index	12,336.03	12,170.41	165.61	1.36 %
S&P/TSX 60 Index	726.10	715.21	10.89	1.52 %
S&P/TSX Venture Composite	495.37	495.72	-0.35	-0.07 %
S&P/TSX Completion Index	779.57	773.07	6.49	0.84 %
S&P/TSX Smallcap Index	444.74	445.28	-0.54	-0.12 %

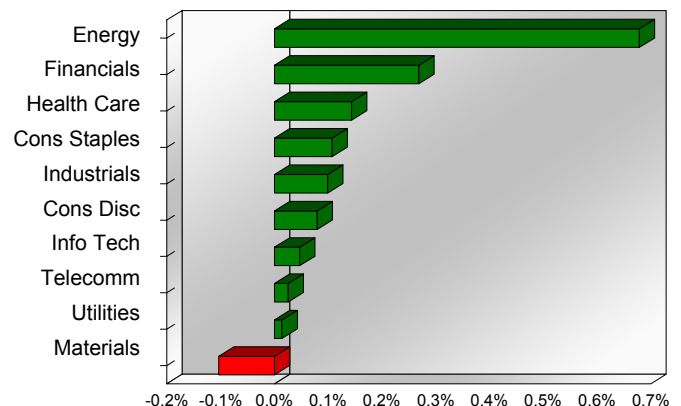
S&P/TSX Composite Index		
Advancers	Decliners	Unchanged
159	78	3

S&P/TSX Composite Index			
Top 10 Index Contributors		Top 10 Index Detractors	
Constituent	Index Contribution	Constituent	Index Contribution
VRX	16.73	G	-6.60
ENB	13.46	ABX	-5.84
SU	12.19	TD	-3.10
CNQ	10.27	MG	-2.87
CNR	7.94	AEM	-2.68
BAM.A	6.32	IFC	-2.02
CVE	6.16	YRI	-1.73
BNS	6.03	AC	-1.72
ATD.B	5.87	FNV	-1.19
BMO	5.37	THO	-0.98

S&P/TSX Composite Index			
Top 10 Advancers		Top 10 Decliners	
Constituent	Return	Constituent	Return
PGF	15.28%	HBM	-14.65%
KEL	13.36%	AGI	-9.98%
TCK.B	12.89%	P	-9.64%
POU	10.91%	IMG	-9.26%
PSG	9.03%	YRI	-8.71%
IFP	8.44%	AC	-8.52%
CPG	8.37%	PVG	-8.37%
SGY	7.74%	LIF	-8.11%
SW	7.37%	BTO	-6.72%
VET	6.39%	TXG	-6.67%

S&P/TSX Composite Index				
Sector	# of Index Constituents	Weight	Market Cap (\$B)	Index Contribution
Energy	55	17.67 %	\$280.76	82.64
Financials	46	38.40 %	\$591.80	32.68
Health Care	5	2.96 %	\$47.43	17.48
Consumer Staples	10	4.67 %	\$73.09	13.08
Industrials	23	8.20 %	\$127.06	12.08
Consumer Discretionary	26	6.91 %	\$106.95	9.71
Information Technology	13	3.20 %	\$49.62	5.70
Telecommunication Services	4	5.84 %	\$89.72	3.15
Utilities	12	2.39 %	\$36.75	1.72
Materials	46	9.78 %	\$148.02	-12.61
S&P/TSX Composite Index	240	100.00 %	\$1,551.20	165.61

S&P/TSX Composite Index - Sectors Returns



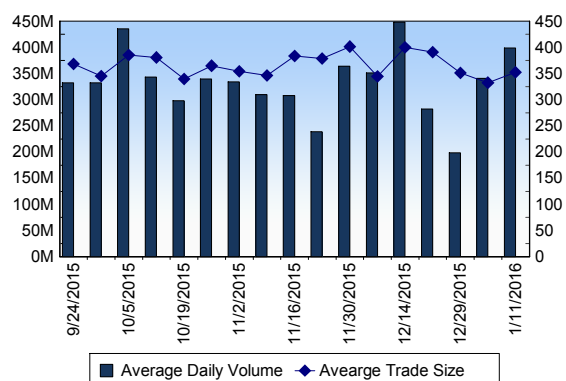
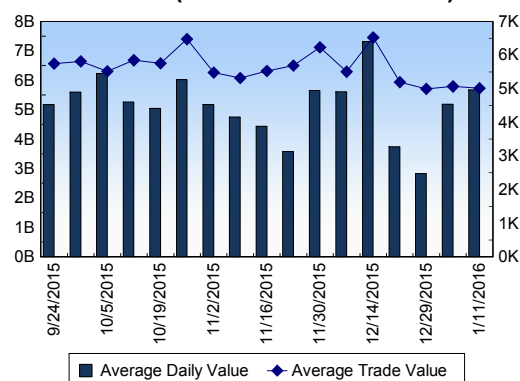
This report is published by TSX Inc. TSX Inc. does not guarantee either the completeness or the accuracy of this information. The information contained in this report is provided for informational purposes only and you agree not to rely upon the information contained in this report for any trading, business or financial purpose. These sheets are printed in Canada and issued by TSX Inc. under the express condition, to which everyone receiving or making use thereof assents, that no liability shall be incurred by TSX Inc. or its affiliated companies or any other vendor or donor, including, without limitation, for reliance on or for any errors or inaccuracies in this report. Neither TMX Group Limited, TSX Inc., nor any of their affiliated companies, guarantees the completeness of the information contained in this document and are not responsible for any errors or omission in or your use of, or reliance on, the information. This publication is under copyright. © 2015 TSX Inc. All rights reserved. Do not copy, distribute, sell or modify this publication without the prior written consent of TSX Inc. www.tmx.com/trading

TSX

Daily Volume	432,964,998
Daily Value	\$6,271,439,402
Daily Trades	1,226,315
Daily Symbols Traded	1,880

TSX ANONYMOUS TRADING

Daily Volume	154,375,276
Daily Value	\$2,613,502,176
Average Trade Size	277
% TSX Volume	35.66 %

TSX Volume**TSX Value (in Canadian Dollars)****Top 20 TSX Symbols by Volume**

Symbol	TSX Volume	TSX Value
PMT	15,282,069	\$535,653
PRE	12,261,223	\$10,348,340
FM	10,367,219	\$34,961,130
BTE	9,320,811	\$24,903,281
TCK.B	7,059,523	\$29,213,276
ECA	6,779,604	\$40,258,497
TD	6,584,637	\$336,912,311
AC	5,573,339	\$45,880,197
ABX	5,377,066	\$59,625,292
PLI	5,322,894	\$14,242,862
RY	5,310,576	\$365,667,971
HOU	4,761,180	\$16,445,360
YRI	4,651,140	\$11,277,106
XIU	4,565,936	\$82,554,465
BBD.B	4,559,608	\$5,202,106
G	4,376,291	\$66,292,234
CNQ	4,323,854	\$108,883,983
NSU	4,189,476	\$13,876,650
MEG	3,971,218	\$19,943,368
PWT	3,965,456	\$3,329,254

Top 20 TSX Symbols by Value

Symbol	TSX Volume	TSX Value
RY	5,310,576	\$365,667,971
TD	6,584,637	\$336,912,311
CM	2,103,438	\$181,474,747
BNS	3,178,282	\$169,432,484
CP	954,820	\$144,999,599
ENB	3,294,729	\$144,884,735
BMO	1,900,263	\$137,723,767
SU	3,788,543	\$120,355,325
CNR	1,569,775	\$116,020,125
CNQ	4,323,854	\$108,883,983
MG	2,143,163	\$108,376,679
BCE	1,619,538	\$88,897,120
XIU	4,565,936	\$82,554,465
NA	2,161,950	\$80,118,928
TRP	1,678,383	\$74,980,663
GIB.A	1,327,194	\$72,005,822
MFC	3,852,931	\$71,828,509
VRX	562,832	\$71,239,073
AEM	1,652,502	\$66,823,337
G	4,376,291	\$66,292,234

ETF Trading

Daily Volume	39,660,596	Average Trade Value	\$10,712
Daily Value	\$578,199,425	Average Trade Size	735
# Trades	53,976	# of ETFs Traded	402

Top 10 ETFs by TSX Volume

Symbol	Market Volume	Market Value
HOU	4,761,180	\$16,445,360
XIU	4,565,936	\$82,554,465
HPR	3,489,916	\$26,338,191
XEG	3,065,696	\$27,887,189
HVI	1,619,702	\$12,189,210
HGU	1,473,926	\$24,711,789
HNU	1,276,472	\$16,236,155
HGD	1,270,265	\$14,262,810
PFH	1,263,763	\$23,707,571
HOD	1,263,527	\$34,498,301

Top 10 ETFs by TSX Value

Symbol	Market Volume	Market Value
XIU	4,565,936	\$82,554,465
HOD	1,263,527	\$34,498,301
XFN	1,181,971	\$32,826,483
XEG	3,065,696	\$27,887,189
HVU	552,642	\$26,401,355
HPR	3,489,916	\$26,338,191
HSU	979,894	\$26,059,926
HGU	1,473,926	\$24,711,789
PFH	1,263,763	\$23,707,571
HOU	4,761,180	\$16,445,360

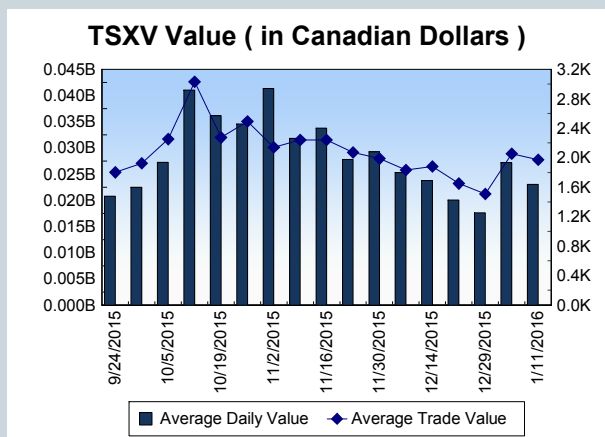
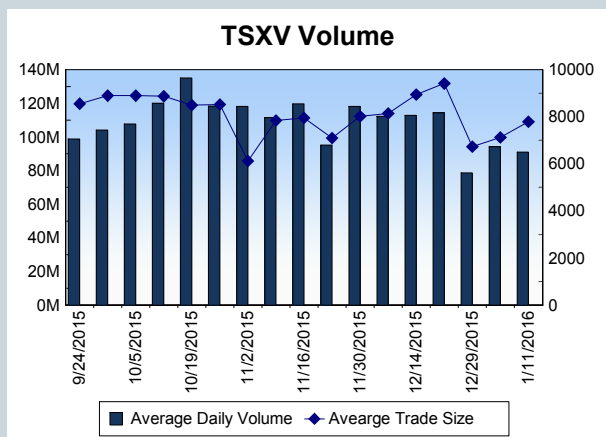
Block Trades	Non Block Trades
889	1,225,426

Top 5 Block Trade Brokers by Volume	
Broker	TSX Block Volume
TD SECURITIES INC.	18,480,800
BMO NESBITT BURNS INC.	7,134,100
DESJARDINS SECURITIES IN	6,082,600
CIBC WORLD MARKETS INC.	5,541,300
NATIONAL BANK FINANCIAL	4,841,700

Top 5 Block Trade Symbols by Volume	
Symbol	TSX Block Volume
PMT	5,450,000
NSU	3,486,900
HPR	3,333,700
BTE	2,306,300
XIU	2,205,800

TSXV	
Daily Volume	90,914,681
Daily Value	\$20,434,425
Daily Trades	11,500
Daily Symbols Traded	887

TSXV ANONYMOUS TRADING	
Daily Volume	32,589,996
Daily Value	\$7,734,527
Average Trade Size	6,797
% TSXV Volume	35.85%



Top 20 TSXV Symbols by Volume		
Symbol	TSXV Volume	TSXV Value
SNM	15,649,500	\$662,648
PHM	3,054,811	\$1,830,793
AME	1,334,817	\$56,423
LND	1,306,650	\$108,099
SCR	1,279,922	\$375,138
NXE	1,132,125	\$884,956
EGA	1,076,700	\$24,923
SMI	1,053,225	\$155,806
PMI	1,036,200	\$30,886
STA	1,012,000	\$10,120
KAM	957,715	\$792,710
CXV	943,197	\$261,595
SLC	931,175	\$123,420
ROG	913,571	\$684,411
PPX	878,750	\$38,565
LMD	833,737	\$114,862
ARC	760,000	\$7,600
CE	734,000	\$11,015
TGV	713,000	\$3,565
ENA	583,377	\$51,411

Top 20 TSXV Symbols by Value		
Symbol	TSXV Volume	TSXV Value
PHM	3,054,811	\$1,830,793
CGC	494,373	\$1,353,282
NXE	1,132,125	\$884,956
RUF.UN	125,785	\$807,995
KAM	957,715	\$792,710
ROG	913,571	\$684,411
TRX	559,200	\$671,672
SNM	15,649,500	\$662,648
AT	388,190	\$402,523
SCR	1,279,922	\$375,138
DLS	527,000	\$346,535
PNE	319,790	\$282,288
CXV	943,197	\$261,595
RMC	64,481	\$250,821
NYX	99,915	\$248,384
PTK	243,732	\$218,424
FF	566,106	\$218,030
MPH	38,319	\$207,496
CAC	311,894	\$205,850
PTG	378,756	\$200,847

Dark TSX/TSXV Trading			
Volume	12,180,880	Daily Trades	37,554
Value	261,936,720	Daily Symbols Traded	1,084