



January 15, 2016

For more information, email [trading\\_sales@tsx.com](mailto:trading_sales@tsx.com)  
 Visit our blog at <http://exchange.tmx.com/>

Indices	January 15 Close	Previous Close	Change	% Change
S&P/TSX Composite Index	12,073.46	12,336.03	-262.56	-2.13 %
S&P/TSX 60 Index	709.12	726.10	-16.98	-2.34 %
S&P/TSX Venture Composite	488.96	495.37	-6.41	-1.29 %
S&P/TSX Completion Index	768.27	779.57	-11.29	-1.45 %
S&P/TSX Smallcap Index	436.08	444.74	-8.67	-1.95 %

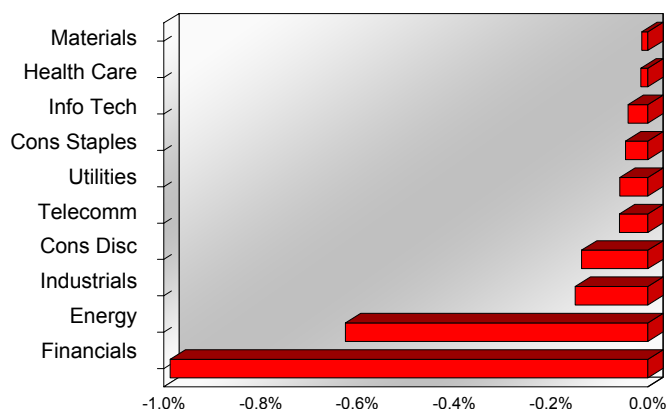
S&P/TSX Composite Index		
Advancers	Decliners	Unchanged
49	190	1

S&P/TSX Composite Index			
Top 10 Index Contributors		Top 10 Index Detractors	
Constituent	Index Contribution	Constituent	Index Contribution
ABX	5.47	RY	-29.76
POT	2.66	TD	-27.13
FFH	1.82	SU	-13.45
REI.UN	1.30	BNS	-13.01
CAR.UN	1.26	CNQ	-12.71
DGC	1.25	TRP	-12.29
AEM	1.21	MFC	-12.23
GWO	1.01	BMO	-11.24
MRU	0.96	CNR	-10.97
BPY.UN	0.87	BAM.A	-10.23

S&P/TSX Composite Index			
Top 10 Advancers		Top 10 Decliners	
Constituent	Return	Constituent	Return
DGC	6.00%	TA	-13.76%
ABX	5.41%	BTE	-12.59%
CAR.UN	4.69%	PSG	-11.61%
TCK.B	4.66%	SGY	-10.50%
TCL.A	3.50%	MEG	-9.73%
CF	3.38%	ECA	-9.12%
NG	3.18%	FM	-8.58%
BIR	2.84%	WCP	-7.83%
PWT	2.38%	TOG	-7.38%
REI.UN	2.23%	CLS	-6.81%

S&P/TSX Composite Index				
Sector	# of Index Constituents	Weight	Market Cap (\$B)	Index Contribution
Materials	46	9.54 %	\$147.83	-1.53
Health Care	5	3.06 %	\$47.20	-1.81
Information Technology	13	3.20 %	\$48.98	-5.05
Consumer Staples	10	4.71 %	\$72.38	-5.68
Utilities	12	2.37 %	\$35.85	-7.11
Telecommunication Services	4	5.78 %	\$88.81	-7.24
Consumer Discretionary	26	6.89 %	\$104.83	-16.88
Industrials	23	8.19 %	\$124.73	-18.50
Energy	55	18.10 %	\$271.08	-77.04
Financials	46	38.15 %	\$576.49	-121.72
<b>S&amp;P/TSX Composite Index</b>	<b>240</b>	<b>100.00 %</b>	<b>\$1,518.19</b>	<b>-262.56</b>

S&P/TSX Composite Index - Sectors Returns



This report is published by TSX Inc. TSX Inc. does not guarantee either the completeness or the accuracy of this information. The information contained in this report is provided for informational purposes only and you agree not to rely upon the information contained in this report for any trading, business or financial purpose. These sheets are printed in Canada and issued by TSX Inc. under the express condition, to which everyone receiving or making use thereof assents, that no liability shall be incurred by TSX Inc. or its affiliated companies or any other vendor or donor, including, without limitation, for reliance on or for any errors or inaccuracies in this report. Neither TMX Group Limited, TSX Inc., nor any of their affiliated companies, guarantees the completeness of the information contained in this document and are not responsible for any errors or omission in or your use of, or reliance on, the information. This publication is under copyright. © 2015 TSX Inc. All rights reserved. Do not copy, distribute, sell or modify this publication without the prior written consent of TSX Inc. [www.tmx.com/trading](http://www.tmx.com/trading)

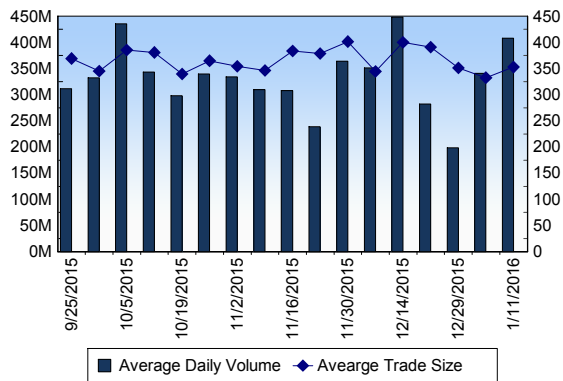
## TSX

Daily Volume	444,342,353
Daily Value	\$7,046,163,235
Daily Trades	1,252,555
Daily Symbols Traded	1,905

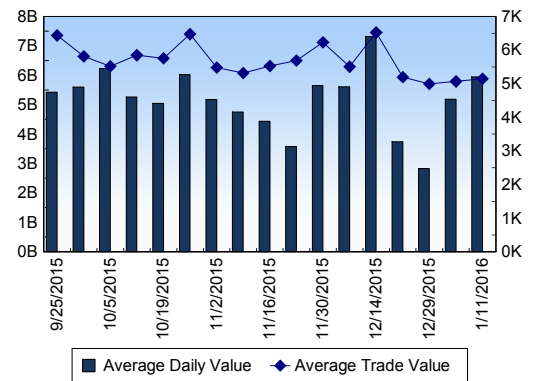
## TSX ANONYMOUS TRADING

Daily Volume	148,608,910
Daily Value	\$2,607,581,502
Average Trade Size	275
% TSX Volume	33.44 %

### TSX Volume



### TSX Value ( in Canadian Dollars )



### Top 20 TSX Symbols by Volume

Symbol	TSX Volume	TSX Value
PRE	10,106,688	\$4,592,924
MFC	10,053,360	\$181,892,432
AXL	9,805,300	\$51,048
TD	8,695,468	\$432,165,077
FM	8,289,034	\$25,076,342
ABX	7,896,395	\$90,594,552
CNQ	7,772,409	\$188,380,410
BTO	7,672,704	\$8,214,891
CS	6,960,428	\$2,078,403
HOU	6,583,824	\$20,529,503
BTE	6,274,754	\$14,733,313
ECA	6,022,065	\$32,784,697
BNS	5,863,608	\$307,204,386
RY	5,710,436	\$383,767,370
TCK.B	5,604,628	\$23,911,695
TRP	4,993,745	\$214,581,237
RMX	4,943,748	\$134,328
BBD.B	4,939,540	\$5,500,948
TA	4,559,984	\$17,620,068
YRI	4,169,952	\$9,716,389

### Top 20 TSX Symbols by Value

Symbol	TSX Volume	TSX Value
TD	8,695,468	\$432,165,077
RY	5,710,436	\$383,767,370
BNS	5,863,608	\$307,204,386
TRP	4,993,745	\$214,581,237
CNQ	7,772,409	\$188,380,410
BMO	2,595,860	\$184,371,561
CM	2,163,570	\$183,808,621
MFC	10,053,360	\$181,892,432
ENB	3,772,978	\$165,435,511
BCE	2,081,434	\$113,374,331
RCI.B	2,286,876	\$110,020,276
SU	3,470,045	\$108,557,710
CNR	1,487,662	\$107,601,898
SLF	2,471,266	\$95,067,312
ABX	7,896,395	\$90,594,552
TRI	1,575,924	\$80,437,479
FNV	1,184,729	\$78,100,383
VRX	613,368	\$77,677,241
NA	2,096,917	\$75,809,034
MRU	1,841,327	\$72,763,707

## ETF Trading

Daily Volume	38,252,056	Average Trade Value	\$8,807
Daily Value	\$562,361,966	Average Trade Size	599
# Trades	63,851	# of ETFs Traded	393

### Top 10 ETFs by TSX Volume

Symbol	Market Volume	Market Value
HOU	6,583,824	\$20,529,503
XIU	3,739,935	\$66,593,788
XEG	3,114,208	\$27,627,003
HVI	2,295,126	\$15,756,777
HGU	1,627,751	\$27,813,580
HOD	1,577,883	\$46,996,714
HSU	1,295,567	\$33,223,292
HGD	1,169,080	\$12,855,202
HNU	975,727	\$11,553,953
CPD	888,423	\$9,964,197

### Top 10 ETFs by TSX Value

Symbol	Market Volume	Market Value
XIU	3,739,935	\$66,593,788
HOD	1,577,883	\$46,996,714
HVU	655,115	\$36,424,096
HSU	1,295,567	\$33,223,292
HGU	1,627,751	\$27,813,580
XEG	3,114,208	\$27,627,003
HOU	6,583,824	\$20,529,503
XSP	816,981	\$17,522,675
HVI	2,295,126	\$15,756,777
HGD	1,169,080	\$12,855,202

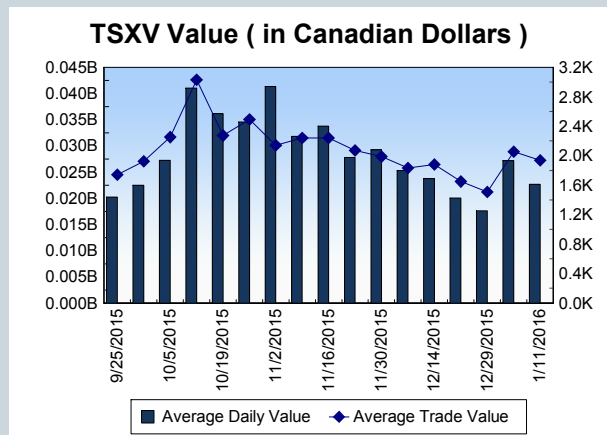
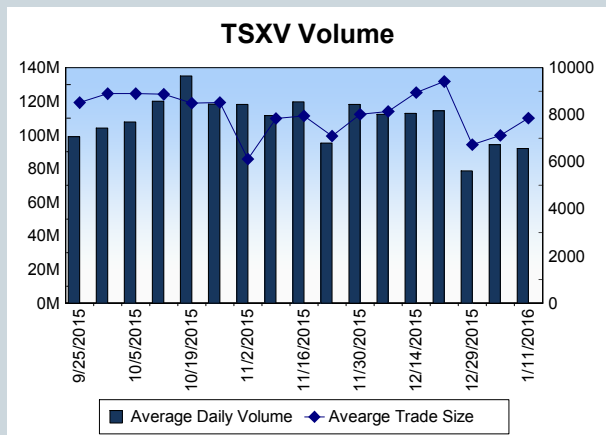
<b>Block Trades</b>	<b>Non Block Trades</b>
948	1,251,607

Top 5 Block Trade Brokers by Volume	
Broker	TSX Block Volume
SOCIETE GENERALE CAPITA	14,794,100
TD SECURITIES INC.	10,096,300
CORMARK SECURITIES INC.	8,985,700
NATIONAL BANK FINANCIAL	6,311,000
CIBC WORLD MARKETS INC.	5,758,900

Top 5 Block Trade Symbols by Volume	
Symbol	TSX Block Volume
CS	5,502,000
MFC	4,612,100
TD	3,930,200
TRP	3,277,000
BNS	2,503,900

TSXV	
Daily Volume	96,127,308
Daily Value	\$21,320,975
Daily Trades	11,815
Daily Symbols Traded	938

TSXV ANONYMOUS TRADING	
Daily Volume	32,553,860
Daily Value	\$7,105,350
Average Trade Size	7,127
% TSXV Volume	33.87%



Top 20 TSXV Symbols by Volume		
Symbol	TSXV Volume	TSXV Value
SNM	8,994,000	\$359,760
PHM	3,271,161	\$1,868,192
ARC	2,562,000	\$25,620
WEB	2,084,000	\$10,420
EQT	1,814,916	\$131,389
LND	1,737,195	\$139,183
NXE	1,534,542	\$1,099,798
FF	1,415,765	\$563,270
STA	1,221,000	\$12,110
CRS	1,199,500	\$59,863
SYH	1,110,664	\$27,820
MTB	1,080,000	\$5,400
ICG	929,604	\$286,688
PFC	883,466	\$48,591
EIL	837,000	\$57,825
KIV	699,476	\$57,725
VIV	699,160	\$38,454
DYA	642,335	\$91,289
GEM	622,190	\$23,583
PTG	603,553	\$330,319

Top 20 TSXV Symbols by Value		
Symbol	TSXV Volume	TSXV Value
PHM	3,271,161	\$1,868,192
WED	515,257	\$1,339,990
NXE	1,534,542	\$1,099,798
PLC.R	92,500	\$1,060,040
CGC	366,508	\$989,023
RUF.UN	109,452	\$712,692
FF	1,415,765	\$563,270
SNM	8,994,000	\$359,760
PTG	603,553	\$330,319
MPH	61,377	\$323,958
GRC	457,569	\$311,247
PTK	340,841	\$304,042
ICG	929,604	\$286,688
NYX	99,640	\$245,861
PE	416,679	\$233,590
XAU	65,254	\$202,661
PRV.UN	115,878	\$192,862
RMC	51,196	\$191,247
RUF.U	40,952	\$183,544
QHR	147,688	\$179,655

Dark TSX/TSXV Trading			
Volume	14,596,240	Daily Trades	48,708
Value	312,191,112	Daily Symbols Traded	1,143