



January 19, 2016

For more information, email trading_sales@tsx.com
 Visit our blog at <http://exchange.tmx.com/>

Indices	January 19 Close	Previous Close	Change	% Change
S&P/TSX Composite Index	12,002.24	11,942.17	60.07	0.50 %
S&P/TSX 60 Index	706.58	703.69	2.89	0.41 %
S&P/TSX Venture Composite	480.37	485.07	-4.70	-0.97 %
S&P/TSX Completion Index	758.05	751.99	6.06	0.81 %
S&P/TSX Smallcap Index	424.98	427.89	-2.91	-0.68 %

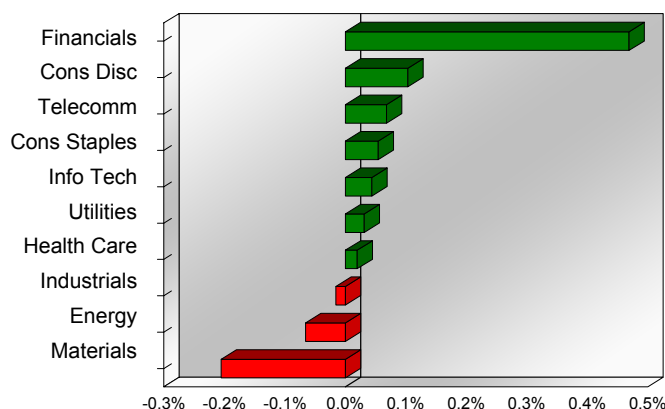
S&P/TSX Composite Index		
Advancers	Decliners	Unchanged
146	93	1

S&P/TSX Composite Index			
Top 10 Index Contributors		Top 10 Index Detractors	
Constituent	Index Contribution	Constituent	Index Contribution
TD	13.42	CNR	-9.46
BNS	8.51	CNQ	-8.70
RY	6.61	SU	-7.82
CM	4.39	ABX	-5.65
AGU	4.32	G	-5.15
POT	4.12	FNV	-4.36
TRP	3.72	ECA	-3.90
MG	3.70	AEM	-3.22
ENB	3.64	SLW	-2.57
TRI	3.13	K	-1.91

S&P/TSX Composite Index			
Top 10 Advancers		Top 10 Decliners	
Constituent	Return	Constituent	Return
LIF	15.28%	BTE	-17.17%
BIN	10.53%	SSO	-13.76%
TCK.B	7.81%	IMG	-12.95%
CCA	7.13%	ECA	-10.88%
CAR.UN	6.96%	KEL	-9.55%
WTE	6.63%	K	-9.50%
CIG	4.89%	PVG	-8.96%
ALA	4.62%	P	-8.72%
FRU	3.63%	ELD	-8.55%
TCN	3.56%	CR	-8.15%

S&P/TSX Composite Index				
Sector	# of Index Constituents	Weight	Market Cap (\$B)	Index Contribution
Financials	46	38.14 %	\$579.84	55.99
Consumer Discretionary	26	6.90 %	\$105.18	12.38
Telecommunication Services	4	5.87 %	\$89.16	8.12
Consumer Staples	10	4.71 %	\$71.48	6.47
Information Technology	13	3.18 %	\$48.38	5.27
Utilities	12	2.36 %	\$35.84	3.73
Health Care	5	3.13 %	\$47.30	2.33
Industrials	23	8.32 %	\$124.68	-1.84
Energy	55	17.67 %	\$264.35	-7.87
Materials	46	9.73 %	\$143.02	-24.51
S&P/TSX Composite Index	240	100.00 %	\$1,509.23	60.07

S&P/TSX Composite Index - Sectors Returns



This report is published by TSX Inc. TSX Inc. does not guarantee either the completeness or the accuracy of this information. The information contained in this report is provided for informational purposes only and you agree not to rely upon the information contained in this report for any trading, business or financial purpose. These sheets are printed in Canada and issued by TSX Inc. under the express condition, to which everyone receiving or making use thereof assents, that no liability shall be incurred by TSX Inc. or its affiliated companies or any other vendor or donor, including, without limitation, for reliance on or for any errors or inaccuracies in this report. Neither TMX Group Limited, TSX Inc., nor any of their affiliated companies, guarantees the completeness of the information contained in this document and are not responsible for any errors or omission in or your use of, or reliance on, the information. This publication is under copyright. © 2015 TSX Inc. All rights reserved. Do not copy, distribute, sell or modify this publication without the prior written consent of TSX Inc. www.tmx.com/trading

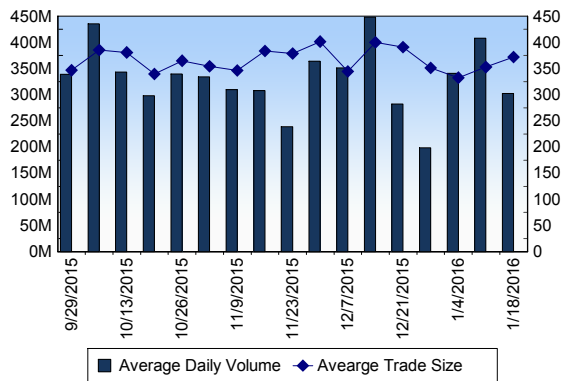
TSX

Daily Volume	418,700,275
Daily Value	\$6,266,174,229
Daily Trades	1,194,410
Daily Symbols Traded	1,904

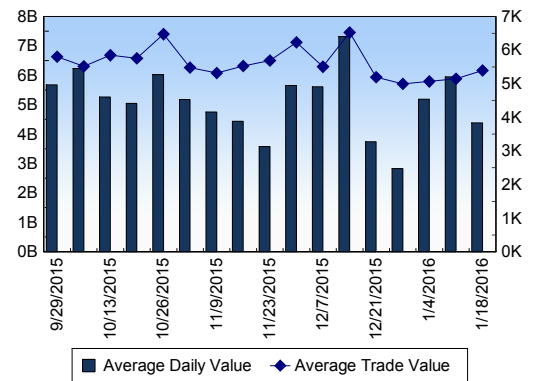
TSX ANONYMOUS TRADING

Daily Volume	144,016,062
Daily Value	\$2,499,824,539
Average Trade Size	269
% TSX Volume	34.40 %

TSX Volume



TSX Value (in Canadian Dollars)



Top 20 TSX Symbols by Volume

Symbol	TSX Volume	TSX Value
BBD.B	11,260,677	\$13,680,482
BTE	7,806,769	\$16,739,988
PRE	7,049,060	\$4,572,291
FM	6,539,189	\$19,560,846
ECA	6,354,178	\$31,347,171
SU	6,246,971	\$185,916,399
HOU	6,104,912	\$18,357,686
TD	5,942,757	\$297,771,828
COS	5,845,524	\$48,813,870
CNQ	5,746,687	\$134,001,421
TCK.B	5,658,948	\$27,028,101
ABX	5,510,498	\$60,866,552
YRI	5,437,723	\$11,174,429
K	5,045,009	\$10,134,287
RY	4,896,506	\$331,497,603
CPG	4,722,062	\$62,780,825
BIN	4,612,617	\$168,686,593
MFC	4,291,496	\$77,644,833
BTO	3,878,281	\$3,772,026
XIU	3,877,380	\$69,068,837

Top 20 TSX Symbols by Value

Symbol	TSX Volume	TSX Value
RY	4,896,506	\$331,497,603
TD	5,942,757	\$297,771,828
BNS	3,585,742	\$190,515,337
SU	6,246,971	\$185,916,399
BIN	4,612,617	\$168,686,593
ENB	3,462,887	\$151,720,233
CNQ	5,746,687	\$134,001,421
CNR	1,857,269	\$133,678,257
BMO	1,775,050	\$126,816,032
BCE	1,876,498	\$102,662,010
CM	1,158,128	\$99,407,709
CP	575,314	\$88,673,415
MG	1,756,568	\$86,845,857
VRX	633,367	\$81,660,449
TRP	1,818,302	\$78,185,054
MFC	4,291,496	\$77,644,833
POT	3,251,466	\$76,864,199
NA	1,921,146	\$70,958,311
XIU	3,877,380	\$69,068,837
CPG	4,722,062	\$62,780,825

ETF Trading

Daily Volume	35,776,758	Average Trade Value	\$9,718
Daily Value	\$554,118,446	Average Trade Size	627
# Trades	57,017	# of ETFs Traded	407

Top 10 ETFs by TSX Volume

Symbol	Market Volume	Market Value
HOU	6,104,912	\$18,357,686
XIU	3,877,380	\$69,068,837
XEG	2,073,893	\$18,017,863
ZEB	2,062,046	\$40,760,393
HOD	1,793,370	\$55,638,282
HVI	1,631,899	\$11,218,305
HGU	1,553,327	\$23,652,248
HGD	1,402,041	\$17,111,663
XGD	1,114,071	\$8,770,256
HNU	776,176	\$9,160,594

Top 10 ETFs by TSX Value

Symbol	Market Volume	Market Value
XIU	3,877,380	\$69,068,837
HOD	1,793,370	\$55,638,282
ZEB	2,062,046	\$40,760,393
HVU	653,123	\$36,076,591
HGU	1,553,327	\$23,652,248
HOU	6,104,912	\$18,357,686
XEG	2,073,893	\$18,017,863
HGD	1,402,041	\$17,111,663
HSU	554,779	\$14,450,349
VFV	256,471	\$12,518,683

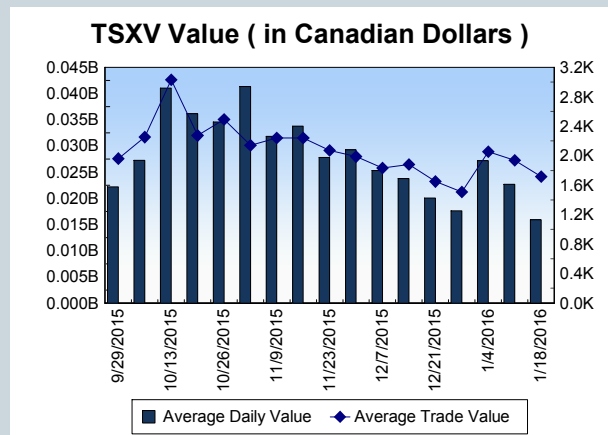
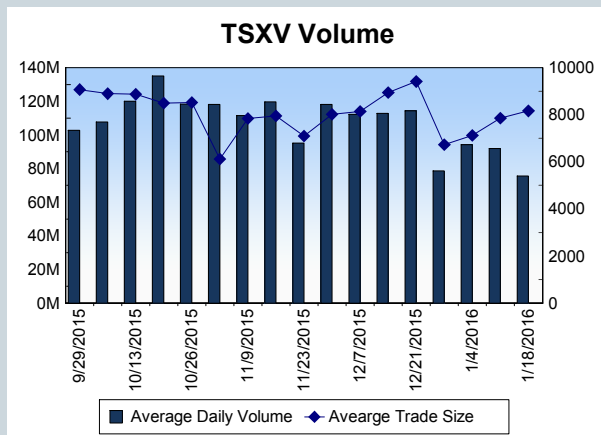
Block Trades	Non Block Trades
958	1,193,452

Top 5 Block Trade Brokers by Volume	
Broker	TSX Block Volume
CIBC WORLD MARKETS INC.	9,964,900
TD SECURITIES INC.	9,052,300
CANACCORD GENUITY CORI	6,311,500
CORMARK SECURITIES INC.	5,876,600
BMO NESBITT BURNS INC.	3,817,700

Top 5 Block Trade Symbols by Volume	
Symbol	TSX Block Volume
TCW	2,772,500
ZEB	1,838,900
PGF	1,549,500
TD	1,507,900
XIU	1,334,600

TSXV	
Daily Volume	95,030,038
Daily Value	\$20,910,401
Daily Trades	10,990
Daily Symbols Traded	925

TSXV ANONYMOUS TRADING	
Daily Volume	47,168,100
Daily Value	\$7,693,608
Average Trade Size	10,074
% TSXV Volume	49.63%



Top 20 TSXV Symbols by Volume		
Symbol	TSXV Volume	TSXV Value
SNM	11,984,220	\$419,448
SPC	3,963,000	\$39,630
DYA	2,256,694	\$447,890
GPE	1,809,190	\$10,683
LND	1,698,250	\$129,441
FF	1,606,745	\$594,291
PHM	1,474,043	\$848,628
EQT	1,253,941	\$96,061
IKM	1,061,900	\$563,525
VID	1,053,868	\$53,742
ROI	989,000	\$44,505
MCC	937,850	\$204,920
ENA	911,825	\$70,906
TIN	756,000	\$8,560
VSR	733,000	\$20,770
XX	730,000	\$142,598
ICG	727,361	\$225,718
PYD	681,000	\$27,240
EHT	655,850	\$180,212
AAO	610,833	\$15,275

Top 20 TSXV Symbols by Value		
Symbol	TSXV Volume	TSXV Value
CGC	591,507	\$1,578,854
SRX	435,481	\$1,385,677
PHM	1,474,043	\$848,628
SUS.A	59,711	\$632,159
FF	1,606,745	\$594,291
IKM	1,061,900	\$563,525
PNE	576,449	\$473,753
TWM	348,530	\$452,933
DYA	2,256,694	\$447,890
XAU	130,001	\$434,656
SNM	11,984,220	\$419,448
RUF.UN	58,714	\$392,984
SYZ	46,425	\$348,349
WED	128,805	\$341,324
FAN	545,621	\$292,335
NXE	380,550	\$284,704
PE	479,120	\$269,678
PTK	296,443	\$256,485
PHO	437,550	\$255,079
ICG	727,361	\$225,718

Dark TSX/TSXV Trading			
Volume	13,636,170	Daily Trades	44,368
Value	293,115,039	Daily Symbols Traded	1,213