



January 21, 2016

For more information, email trading_sales@tsx.com
 Visit our blog at <http://exchange.tmx.com/>

Indices	January 21 Close	Previous Close	Change	% Change
S&P/TSX Composite Index	12,035.86	11,843.11	192.74	1.63 %
S&P/TSX 60 Index	706.83	695.03	11.80	1.70 %
S&P/TSX Venture Composite	475.05	473.74	1.31	0.28 %
S&P/TSX Completion Index	766.19	755.58	10.60	1.40 %
S&P/TSX Smallcap Index	434.43	427.87	6.56	1.53 %

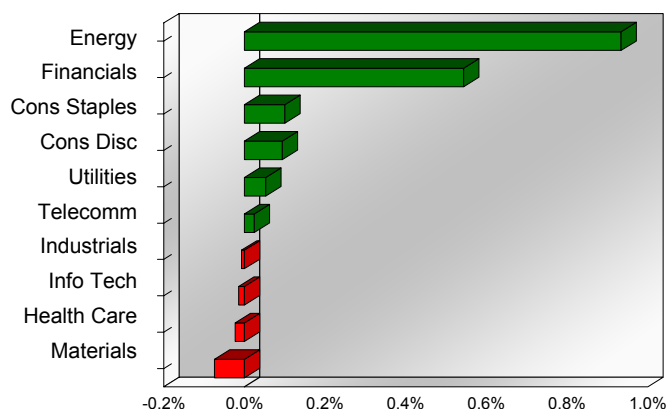
S&P/TSX Composite Index		
Advancers	Decliners	Unchanged
174	63	3

S&P/TSX Composite Index			
Top 10 Index Contributors		Top 10 Index Detractors	
Constituent	Index Contribution	Constituent	Index Contribution
ENB	23.56	POT	-5.18
CNQ	16.71	VRX	-2.73
SU	15.29	RCI.B	-2.14
RY	14.29	G	-2.05
TD	11.35	AGU	-2.01
TRP	10.04	IFC	-1.77
BNS	8.32	BBD.B	-1.69
MFC	8.00	CP	-1.47
ATD.B	6.30	FNV	-0.91
BMO	4.09	SLW	-0.64

S&P/TSX Composite Index			
Top 10 Advancers		Top 10 Decliners	
Constituent	Return	Constituent	Return
BTE	23.71%	BBD.B	-9.17%
POU	15.16%	BTO	-7.69%
PWT	14.47%	PGF	-7.41%
PSG	10.43%	SMF	-6.00%
CR	9.77%	IMG	-5.43%
MEG	9.65%	CG	-4.91%
SGY	8.92%	NG	-4.54%
ATH	8.40%	CXR	-3.77%
HSE	8.39%	POT	-3.31%
CNQ	8.38%	YRI	-3.29%

S&P/TSX Composite Index				
Sector	# of Index Constituents	Weight	Market Cap (\$B)	Index Contribution
Energy	55	17.39 %	\$272.94	110.55
Financials	46	38.27 %	\$578.08	64.34
Consumer Staples	10	4.75 %	\$72.27	11.83
Consumer Discretionary	26	6.96 %	\$104.99	11.08
Utilities	12	2.41 %	\$36.62	6.28
Telecommunication Services	4	5.91 %	\$88.36	2.86
Industrials	23	8.20 %	\$122.04	-0.85
Information Technology	13	3.24 %	\$48.09	-1.75
Health Care	5	3.18 %	\$47.00	-2.75
Materials	46	9.68 %	\$143.09	-8.86
S&P/TSX Composite Index	240	100.00 %	\$1,513.46	192.74

S&P/TSX Composite Index - Sectors Returns



This report is published by TSX Inc. TSX Inc. does not guarantee either the completeness or the accuracy of this information. The information contained in this report is provided for informational purposes only and you agree not to rely upon the information contained in this report for any trading, business or financial purpose. These sheets are printed in Canada and issued by TSX Inc. under the express condition, to which everyone receiving or making use thereof assents, that no liability shall be incurred by TSX Inc. or its affiliated companies or any other vendor or donor, including, without limitation, for reliance on or for any errors or inaccuracies in this report. Neither TMX Group Limited, TSX Inc., nor any of their affiliated companies, guarantees the completeness of the information contained in this document and are not responsible for any errors or omission in or your use of, or reliance on, the information. This publication is under copyright. © 2015 TSX Inc. All rights reserved. Do not copy, distribute, sell or modify this publication without the prior written consent of TSX Inc. www.tmx.com/trading

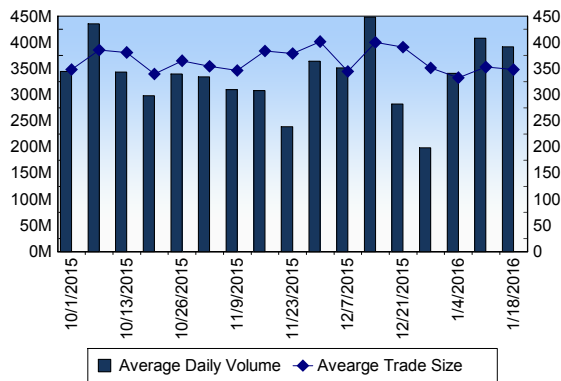
TSX

Daily Volume	437,546,964
Daily Value	\$6,141,841,758
Daily Trades	1,310,499
Daily Symbols Traded	1,852

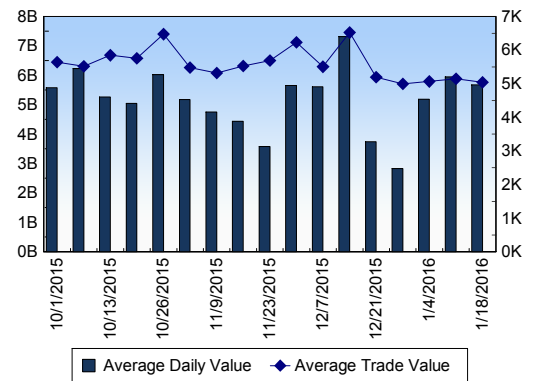
TSX ANONYMOUS TRADING

Daily Volume	157,496,215
Daily Value	\$2,622,155,687
Average Trade Size	270
% TSX Volume	36.00 %

TSX Volume



TSX Value (in Canadian Dollars)



Top 20 TSX Symbols by Volume

Symbol	TSX Volume	TSX Value
BBD.B	16,726,486	\$18,940,409
FM	14,228,855	\$42,302,201
ATH	12,270,623	\$15,221,200
BTE	11,180,954	\$24,845,684
WCP	7,968,150	\$55,710,442
ECA	7,388,716	\$39,506,805
HOU	7,272,288	\$20,921,524
TCK.B	6,258,124	\$33,236,782
ELD	5,560,827	\$16,666,011
CPG	5,488,668	\$70,752,930
SU	5,339,918	\$157,432,652
COS	5,167,945	\$42,713,594
MFC	5,118,127	\$92,814,594
ABX	5,089,662	\$58,921,999
CNQ	4,675,810	\$113,132,935
GTE	4,474,278	\$13,391,451
XIU	4,435,269	\$78,538,697
POT	4,206,414	\$96,581,764
MEG	3,933,968	\$19,047,713
CVE	3,903,276	\$66,216,207

Top 20 TSX Symbols by Value

Symbol	TSX Volume	TSX Value
RY	3,894,007	\$259,087,142
SU	5,339,918	\$157,432,652
TD	3,036,202	\$151,617,535
BNS	2,839,120	\$149,208,839
CNR	2,139,442	\$145,829,737
CP	1,005,669	\$145,667,262
CM	1,610,847	\$136,046,728
MG	2,665,941	\$132,285,955
ENB	3,001,766	\$130,120,291
BIN	2,981,367	\$119,106,246
BMO	1,663,333	\$117,747,813
CNQ	4,675,810	\$113,132,935
POT	4,206,414	\$96,581,764
MFC	5,118,127	\$92,814,594
BCE	1,577,129	\$84,726,961
XIU	4,435,269	\$78,538,697
TRP	1,719,011	\$76,459,693
HOD	2,267,586	\$72,859,915
CPG	5,488,668	\$70,752,930
CVE	3,903,276	\$66,216,207

ETF Trading

Daily Volume	38,795,873	Average Trade Value	\$9,205
Daily Value	\$578,456,875	Average Trade Size	617
# Trades	62,841	# of ETFs Traded	384

Top 10 ETFs by TSX Volume

Symbol	Market Volume	Market Value
HOU	7,272,288	\$20,921,524
XIU	4,435,269	\$78,538,697
XEG	2,793,440	\$24,598,298
HOD	2,267,586	\$72,859,915
HNU	1,372,622	\$16,409,199
HVI	1,327,001	\$8,921,820
HGD	1,206,714	\$14,771,076
HGU	1,160,374	\$17,485,025
HXD	848,307	\$10,906,162
HSU	846,936	\$21,754,631

Top 10 ETFs by TSX Value

Symbol	Market Volume	Market Value
XIU	4,435,269	\$78,538,697
HOD	2,267,586	\$72,859,915
HVU	600,312	\$34,557,190
XEG	2,793,440	\$24,598,298
HSU	846,936	\$21,754,631
HOU	7,272,288	\$20,921,524
XFN	719,636	\$19,517,028
HGU	1,160,374	\$17,485,025
HNU	1,372,622	\$16,409,199
XSP	689,314	\$14,772,694

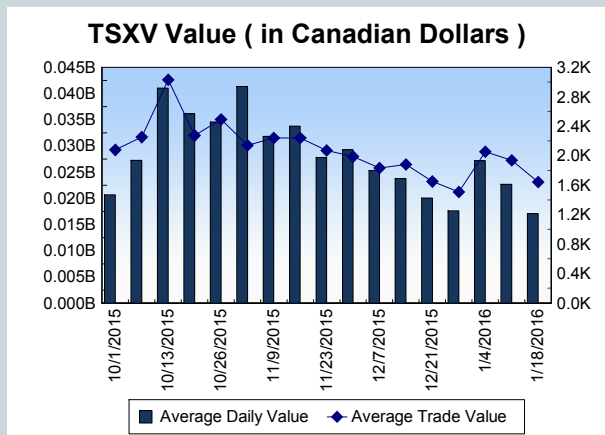
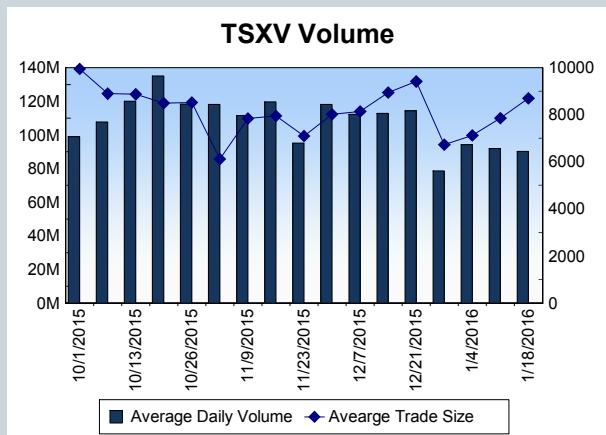
Block Trades	Non Block Trades
852	1,309,647

Top 5 Block Trade Brokers by Volume	
Broker	TSX Block Volume
ITG CANADA CORP.	10,354,500
SCOTIA CAPITAL INC.	7,877,100
NATIONAL BANK FINANCIAL	7,368,400
TD SECURITIES INC.	7,317,174
MORGAN STANLEY CANADA	6,960,800

Top 5 Block Trade Symbols by Volume	
Symbol	TSX Block Volume
ATH	8,345,700
BBD.B	4,608,100
GTE	3,500,000
WCP	2,050,500
ELD	1,655,900

TSXV	
Daily Volume	74,230,789
Daily Value	\$15,720,334
Daily Trades	9,468
Daily Symbols Traded	841

TSXV ANONYMOUS TRADING	
Daily Volume	31,256,785
Daily Value	\$5,614,376
Average Trade Size	8,271
% TSXV Volume	42.11%



Top 20 TSXV Symbols by Volume		
Symbol	TSXV Volume	TSXV Value
WRR	3,719,050	\$202,486
ONE	2,629,970	\$124,852
QIC	2,389,800	\$47,594
SNA	2,141,000	\$47,105
SNM	1,668,710	\$50,295
PHM	1,493,307	\$830,963
LND	1,342,033	\$100,405
GBB	1,119,482	\$44,791
XIM	1,083,924	\$61,967
DYA	961,530	\$191,894
FAS	902,705	\$24,163
QQ	826,000	\$24,780
FF	748,047	\$277,595
ICO	735,000	\$22,050
TNR	731,000	\$8,685
AOS	683,500	\$68,243
TMG	672,000	\$26,790
ICG	659,150	\$201,773
NPH	629,108	\$219,591
TWM	604,027	\$810,339

Top 20 TSXV Symbols by Value		
Symbol	TSXV Volume	TSXV Value
SRX	271,707	\$873,429
PHM	1,493,307	\$830,963
TWM	604,027	\$810,339
CGC	299,981	\$806,301
RUF.UN	77,478	\$514,524
XAU	146,616	\$456,025
PNE	474,485	\$383,729
PE	599,167	\$357,739
LIX	559,010	\$319,421
NXE	393,762	\$285,479
FF	748,047	\$277,595
NPH	629,108	\$219,591
GSV	262,501	\$217,143
WRR	3,719,050	\$202,486
ICG	659,150	\$201,773
DYA	961,530	\$191,894
PTK	211,141	\$183,816
NYX	72,965	\$165,786
PLC	14,500	\$162,903
LXE	186,260	\$148,178

Dark TSX/TSXV Trading			
Volume	11,975,250	Daily Trades	44,475
Value	263,958,360	Daily Symbols Traded	1,140