



January 28, 2016

For more information, email trading_sales@tsx.com
 Visit our blog at <http://exchange.tmx.com/>

Indices	January 28 Close	Previous Close	Change	% Change
S&P/TSX Composite Index	12,591.93	12,377.77	214.16	1.73 %
S&P/TSX 60 Index	741.32	727.40	13.92	1.91 %
S&P/TSX Venture Composite	492.43	489.87	2.56	0.52 %
S&P/TSX Completion Index	795.20	786.22	8.98	1.14 %
S&P/TSX Smallcap Index	457.68	455.86	1.81	0.40 %

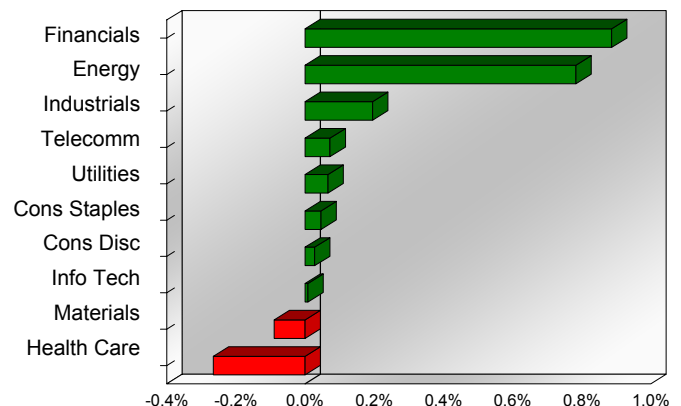
S&P/TSX Composite Index		
Advancers	Decliners	Unchanged
168	70	2

S&P/TSX Composite Index			
Top 10 Index Contributors		Top 10 Index Detractors	
Constituent	Index Contribution	Constituent	Index Contribution
RY	28.58	VRX	-31.09
BNS	20.09	MG	-3.30
SU	16.32	ABX	-3.06
CNR	15.32	RCI.B	-2.39
TD	15.19	CLS	-2.15
CNQ	13.06	FNV	-1.74
MFC	9.88	BBD.B	-1.54
CM	8.02	PLI	-1.25
ENB	7.28	CCL.B	-1.11
CP	7.27	EFN	-1.10

S&P/TSX Composite Index			
Top 10 Advancers		Top 10 Decliners	
Constituent	Return	Constituent	Return
BNP	25.17%	CLS	-15.73%
MEG	18.28%	PLI	-12.36%
ECA	14.31%	BBD.B	-10.10%
ERF	10.50%	VRX	-9.15%
PGF	10.42%	CXR	-7.30%
BTE	9.09%	SMF	-6.70%
CPG	9.06%	RUS	-6.30%
VSN	9.01%	IMG	-6.13%
ARX	9.00%	PVG	-6.11%
SGY	8.33%	NFI	-4.71%

S&P/TSX Composite Index				
Sector	# of Index Constituents	Weight	Market Cap (\$B)	Index Contribution
Financials	46	38.09 %	\$606.61	109.74
Energy	55	18.39 %	\$298.50	96.98
Industrials	23	8.09 %	\$129.00	24.13
Telecommunication Services	4	5.75 %	\$90.60	8.95
Utilities	12	2.46 %	\$39.26	8.21
Consumer Staples	10	4.70 %	\$73.85	5.73
Consumer Discretionary	26	6.68 %	\$104.35	3.45
Information Technology	13	3.19 %	\$49.74	0.99
Materials	46	9.55 %	\$147.17	-11.12
Health Care	5	3.11 %	\$44.29	-32.89
S&P/TSX Composite Index	240	100.00 %	\$1,583.38	214.16

S&P/TSX Composite Index - Sectors Returns



This report is published by TSX Inc. TSX Inc. does not guarantee either the completeness or the accuracy of this information. The information contained in this report is provided for informational purposes only and you agree not to rely upon the information contained in this report for any trading, business or financial purpose. These sheets are printed in Canada and issued by TSX Inc. under the express condition, to which everyone receiving or making use thereof assents, that no liability shall be incurred by TSX Inc. or its affiliated companies or any other vendor or donor, including, without limitation, for reliance on or for any errors or inaccuracies in this report. Neither TMX Group Limited, TSX Inc., nor any of their affiliated companies, guarantees the completeness of the information contained in this document and are not responsible for any errors or omission in or your use of, or reliance on, the information. This publication is under copyright. © 2015 TSX Inc. All rights reserved. Do not copy, distribute, sell or modify this publication without the prior written consent of TSX Inc. www.tmx.com/trading

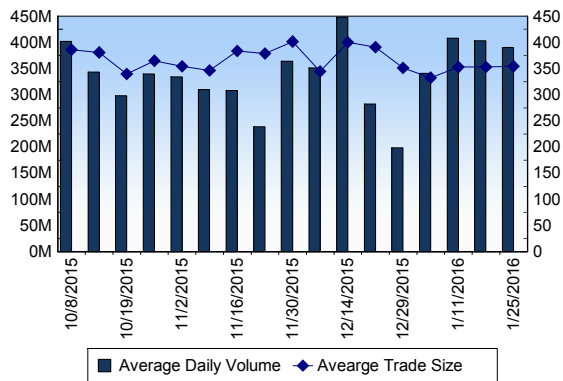
TSX

Daily Volume	424,212,835
Daily Value	\$6,305,581,687
Daily Trades	1,177,127
Daily Symbols Traded	1,850

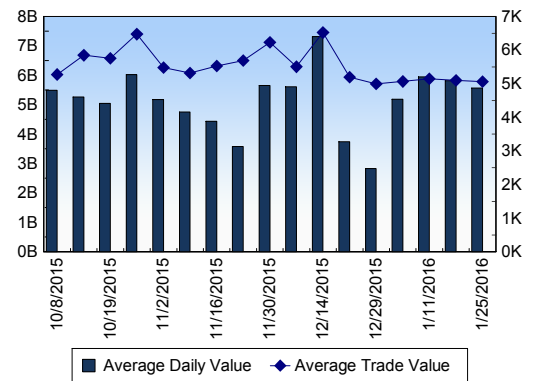
TSX ANONYMOUS TRADING

Daily Volume	148,890,050
Daily Value	\$2,656,896,433
Average Trade Size	282
% TSX Volume	35.10 %

TSX Volume



TSX Value (in Canadian Dollars)



Top 20 TSX Symbols by Volume

Symbol	TSX Volume	TSX Value
BBD.B	26,947,060	\$24,591,225
BTE	12,867,157	\$38,841,748
HOU	9,922,412	\$36,435,120
FM	9,441,791	\$24,853,097
ECA	8,154,875	\$47,466,147
WCP	6,813,607	\$50,579,179
CNQ	6,382,079	\$185,673,852
ABX	6,223,430	\$83,829,307
CPG	5,959,095	\$86,573,842
HBM	5,750,229	\$13,552,063
TCW	5,156,377	\$9,022,811
RY	4,410,943	\$310,049,673
SU	4,370,533	\$142,410,321
SGY	4,183,273	\$9,080,239
ATH	4,130,904	\$6,555,463
XEG	4,120,015	\$40,540,621
COS	4,093,722	\$37,343,277
PLI	4,049,534	\$9,980,274
SPE	3,984,297	\$10,010,078
BNS	3,888,043	\$216,928,889

Top 20 TSX Symbols by Value

Symbol	TSX Volume	TSX Value
RY	4,410,943	\$310,049,673
BNS	3,888,043	\$216,928,889
TD	3,801,932	\$199,361,966
BMO	2,683,677	\$199,089,389
CNQ	6,382,079	\$185,673,852
CM	1,976,430	\$177,221,978
SU	4,370,533	\$142,410,321
NA	3,683,170	\$142,196,283
ENB	2,884,987	\$133,896,165
CP	611,425	\$102,114,164
CNR	1,336,894	\$98,048,575
CPG	5,959,095	\$86,573,842
RCI.B	1,780,064	\$84,155,661
ABX	6,223,430	\$83,829,307
POT	3,859,959	\$82,265,317
BCE	1,351,686	\$74,952,229
VRX	585,710	\$73,784,648
HOD	3,054,038	\$71,984,547
TRP	1,445,400	\$69,970,809
T	1,800,188	\$69,049,989

ETF Trading

Daily Volume	40,173,866	Average Trade Value	\$8,921
Daily Value	\$554,325,515	Average Trade Size	647
# Trades	62,135	# of ETFs Traded	378

Top 10 ETFs by TSX Volume

Symbol	Market Volume	Market Value
HOU	9,922,412	\$36,435,120
XEG	4,120,015	\$40,540,621
XIU	3,604,432	\$66,846,781
HOD	3,054,038	\$71,984,547
HNU	2,141,835	\$25,994,932
HGD	1,315,456	\$13,251,998
HSU	1,184,999	\$30,838,997
HVI	1,004,208	\$7,083,852
HND	986,842	\$19,023,654
XSP	747,581	\$16,227,235

Top 10 ETFs by TSX Value

Symbol	Market Volume	Market Value
HOD	3,054,038	\$71,984,547
XIU	3,604,432	\$66,846,781
XEG	4,120,015	\$40,540,621
HOU	9,922,412	\$36,435,120
HSU	1,184,999	\$30,838,997
HNU	2,141,835	\$25,994,932
HVU	487,945	\$24,226,905
XFN	699,256	\$19,973,771
HND	986,842	\$19,023,654
XSP	747,581	\$16,227,235

Block Trades

872

Non Block Trades

1,176,255

Top 5 Block Trade Brokers by Volume

Broker	TSX Block Volume
NATIONAL BANK FINANCIAL	10,388,500
CIBC WORLD MARKETS INC.	8,206,700
TD SECURITIES INC.	7,645,500
SCOTIA CAPITAL INC.	7,583,110
GOLDMAN SACHS CANADA I	5,336,200

Top 5 Block Trade Symbols by Volume

Symbol	TSX Block Volume
BBD.B	5,498,500
SPE	1,667,500
NA	1,573,000
HBM	1,420,700
COS	1,399,600

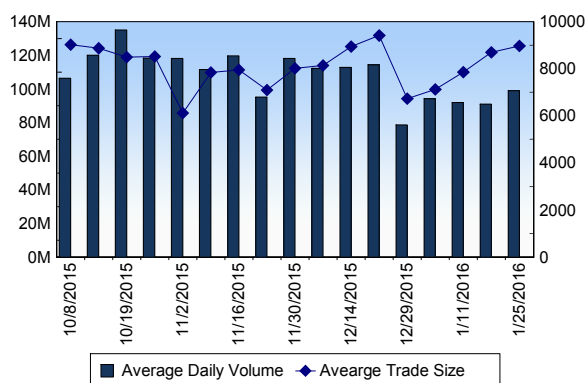
TSXV

Daily Volume	88,427,355
Daily Value	\$18,483,073
Daily Trades	10,525
Daily Symbols Traded	910

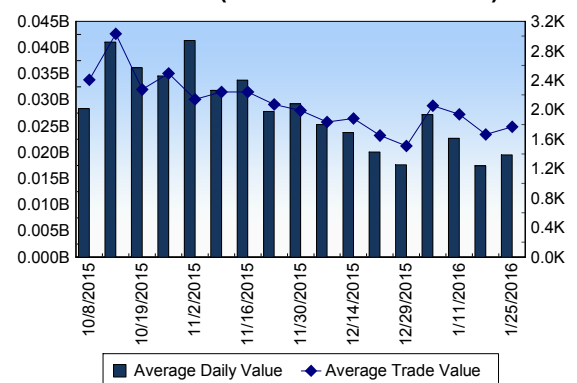
TSXV ANONYMOUS TRADING

Daily Volume	37,223,502
Daily Value	\$6,971,949
Average Trade Size	9,699
% TSXV Volume	42.10%

TSXV Volume



TSXV Value (in Canadian Dollars)



Top 20 TSXV Symbols by Volume

Symbol	TSXV Volume	TSXV Value
SBM	2,492,376	\$544,293
BBI	2,471,134	\$404,370
PHM	2,333,584	\$1,139,382
XOP	2,216,500	\$82,960
PMI	2,138,303	\$90,332
AOS	1,974,524	\$211,783
PFM	1,801,000	\$540,305
WEB	1,799,000	\$17,990
GPH	986,151	\$82,421
AVD	980,856	\$23,655
ICG	978,360	\$326,661
DVG	976,921	\$244,684
DYA	951,164	\$156,100
GPL	948,000	\$15,820
IGD	937,000	\$85,435
NXS	921,000	\$62,185
SNM	880,700	\$39,478
CXV	872,959	\$220,563
MFX	858,000	\$4,290
LXE	823,237	\$767,451

Top 20 TSXV Symbols by Value

Symbol	TSXV Volume	TSXV Value
PHM	2,333,584	\$1,139,382
LXE	823,237	\$767,451
PNE	663,230	\$567,641
XAU	143,228	\$547,506
SBM	2,492,376	\$544,293
PFM	1,801,000	\$540,305
RUF.UN	73,212	\$486,717
BBI	2,471,134	\$404,370
CGC	132,531	\$354,123
ICG	978,360	\$326,661
RMC	91,310	\$315,507
PTK	306,260	\$287,520
SRX	75,201	\$275,045
DVG	976,921	\$244,684
MQL	778,814	\$235,196
TLK	450,500	\$225,990
MPH	38,026	\$224,451
CXV	872,959	\$220,563
NMX	571,670	\$218,641

Dark TSX/TSXV Trading

Volume	13,144,260	Daily Trades	39,777
Value	274,256,637	Daily Symbols Traded	1,074