



February 3, 2016

For more information, email trading_sales@tsx.com
 Visit our blog at <http://exchange.tmx.com/>

Indices	February 3 Close	Previous Close	Change	% Change
S&P/TSX Composite Index	12,593.02	12,442.26	150.77	1.21 %
S&P/TSX 60 Index	740.22	731.70	8.52	1.16 %
S&P/TSX Venture Composite	500.20	494.99	5.21	1.05 %
S&P/TSX Completion Index	799.32	788.56	10.76	1.36 %
S&P/TSX Smallcap Index	462.86	454.14	8.72	1.92 %

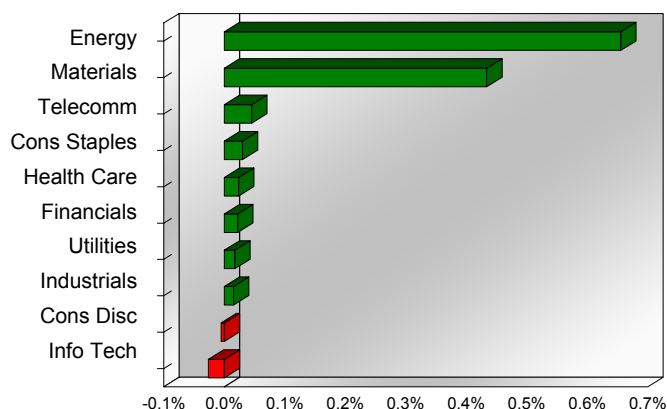
S&P/TSX Composite Index		
Advancers	Decliners	Unchanged
183	53	4

S&P/TSX Composite Index			
Top 10 Index Contributors		Top 10 Index Detractors	
Constituent	Index Contribution	Constituent	Index Contribution
CNQ	19.06	MG	-7.91
ENB	12.09	BAM.A	-5.01
ABX	8.61	QSR	-2.11
G	8.58	CSU	-1.86
RON	8.53	OTC	-1.37
POT	6.77	TFI	-0.89
CVE	4.90	CCL.B	-0.87
ECA	4.37	CIG	-0.86
SU	4.25	IFC	-0.84
FNV	3.85	MFC	-0.78

S&P/TSX Composite Index			
Top 10 Advancers		Top 10 Decliners	
Constituent	Return	Constituent	Return
RON	97.96%	ATA	-8.77%
POU	29.52%	AIM	-7.21%
BTE	14.52%	CIG	-6.47%
FM	13.53%	TFI	-6.31%
PSG	12.08%	MG	-5.45%
ECA	11.63%	CJR.B	-4.06%
HBM	11.20%	CF	-3.47%
BNP	10.91%	FSV	-3.29%
PWT	10.42%	KXS	-3.07%
YRI	10.24%	LNR	-3.00%

S&P/TSX Composite Index				
Sector	# of Index Constituents	Weight	Market Cap (\$B)	Index Contribution
Energy	55	18.29 %	\$296.47	81.55
Materials	46	9.48 %	\$155.10	53.97
Telecommunication Services	4	5.89 %	\$92.81	5.66
Consumer Staples	10	4.71 %	\$74.16	3.76
Health Care	5	2.99 %	\$47.21	2.95
Financials	46	38.20 %	\$598.07	2.73
Utilities	12	2.54 %	\$39.99	2.16
Industrials	23	8.03 %	\$125.86	1.87
Consumer Discretionary	26	6.66 %	\$104.20	-0.65
Information Technology	13	3.20 %	\$49.65	-3.25
S&P/TSX Composite Index	240	100.00 %	\$1,583.52	150.77

S&P/TSX Composite Index - Sectors Returns



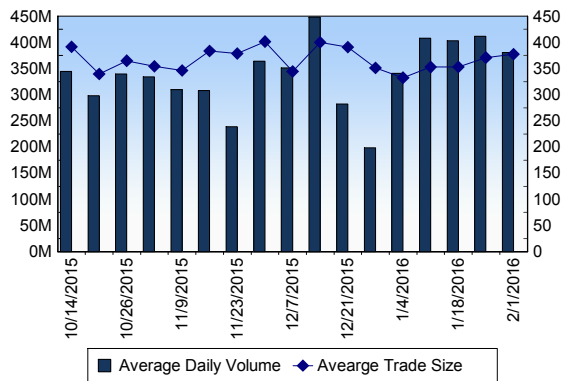
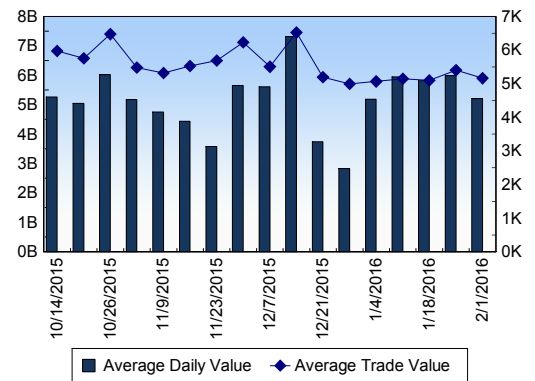
This report is published by TSX Inc. TSX Inc. does not guarantee either the completeness or the accuracy of this information. The information contained in this report is provided for informational purposes only and you agree not to rely upon the information contained in this report for any trading, business or financial purpose. These sheets are printed in Canada and issued by TSX Inc. under the express condition, to which everyone receiving or making use thereof assents, that no liability shall be incurred by TSX Inc. or its affiliated companies or any other vendor or donor, including, without limitation, for reliance on or for any errors or inaccuracies in this report. Neither TMX Group Limited, TSX Inc., nor any of their affiliated companies, guarantees the completeness of the information contained in this document and are not responsible for any errors or omission in or your use of, or reliance on, the information. This publication is under copyright. © 2015 TSX Inc. All rights reserved. Do not copy, distribute, sell or modify this publication without the prior written consent of TSX Inc. www.tmx.com/trading

TSX

Daily Volume	452,115,154
Daily Value	\$6,176,768,833
Daily Trades	1,152,139
Daily Symbols Traded	1,870

TSX ANONYMOUS TRADING

Daily Volume	151,772,911
Daily Value	\$2,360,595,537
Average Trade Size	307
% TSX Volume	33.57 %

TSX Volume**TSX Value (in Canadian Dollars)****Top 20 TSX Symbols by Volume**

Symbol	TSX Volume	TSX Value
TST	21,696,206	\$2,140,169
RON	19,601,646	\$458,492,307
HOU	12,413,813	\$39,201,973
FM	10,579,116	\$30,869,633
BTE	8,482,088	\$23,003,091
ECA	7,460,185	\$44,783,932
BBD.B	6,605,872	\$5,928,393
ABX	6,405,819	\$92,849,605
BTO	5,623,888	\$6,355,695
ATA	5,367,029	\$50,282,016
SGY	4,984,905	\$10,754,759
G	4,829,543	\$81,046,733
YRI	4,819,777	\$13,156,587
CNQ	4,610,263	\$133,214,530
TCK.B	4,504,610	\$22,756,736
MFC	4,479,273	\$80,983,913
XIU	4,337,331	\$80,301,897
WCP	4,258,208	\$29,894,256
RMX	3,974,568	\$166,258
BXE	3,668,530	\$4,953,692

Top 20 TSX Symbols by Value

Symbol	TSX Volume	TSX Value
RON	19,601,646	\$458,492,307
RY	2,866,791	\$200,159,488
TD	2,831,764	\$146,337,339
BNS	2,572,522	\$143,033,865
CNQ	4,610,263	\$133,214,530
CM	1,346,612	\$119,477,090
BMO	1,606,146	\$118,446,069
MG	2,555,191	\$115,660,614
SU	3,554,940	\$111,326,517
BCE	1,882,022	\$106,685,620
ABX	6,405,819	\$92,849,605
HOD	3,116,340	\$81,797,545
ENB	1,724,986	\$81,395,188
G	4,829,543	\$81,046,733
MFC	4,479,273	\$80,983,913
TRP	1,682,617	\$80,419,789
XIU	4,337,331	\$80,301,897
CNR	1,095,292	\$80,147,471
VRX	602,268	\$76,571,613
CP	464,355	\$73,043,238

ETF Trading

Daily Volume	45,557,720	Average Trade Value	\$9,207
Daily Value	\$617,195,744	Average Trade Size	680
# Trades	67,037	# of ETFs Traded	404

Top 10 ETFs by TSX Volume

Symbol	Market Volume	Market Value
HOU	12,413,813	\$39,201,973
XIU	4,337,331	\$80,301,897
XEG	3,626,587	\$34,445,951
HOD	3,116,340	\$81,797,545
HGD	1,820,814	\$15,666,433
HVI	1,507,499	\$10,376,282
HGU	1,414,778	\$29,334,159
HNU	1,286,162	\$13,602,602
XGD	1,192,227	\$10,924,037
HSU	1,101,965	\$28,676,440

Top 10 ETFs by TSX Value

Symbol	Market Volume	Market Value
HOD	3,116,340	\$81,797,545
XIU	4,337,331	\$80,301,897
HVU	806,305	\$40,986,134
HOU	12,413,813	\$39,201,973
XEG	3,626,587	\$34,445,951
HGU	1,414,778	\$29,334,159
HSU	1,101,965	\$28,676,440
XFN	652,121	\$18,365,646
XSP	783,986	\$17,017,642
HGD	1,820,814	\$15,666,433

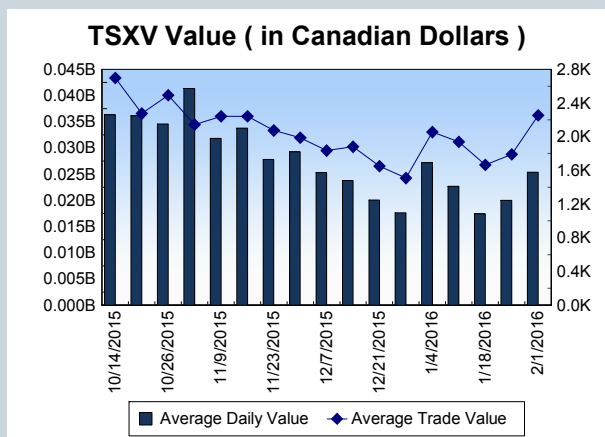
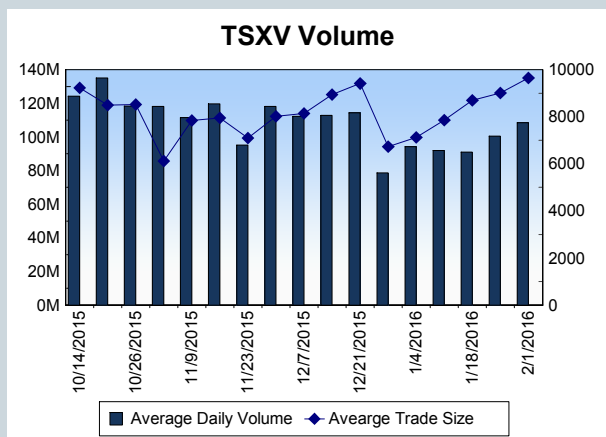
Block Trades	Non Block Trades
1,232	1,150,907

Top 5 Block Trade Brokers by Volume	
Broker	TSX Block Volume
TD SECURITIES INC.	8,332,400
CIBC WORLD MARKETS INC.	7,994,900
DUNDEE SECURITIES LTD.	6,738,100
GMP SECURITIES L.P.	6,153,200
CORMARK SECURITIES INC.	5,425,800

Top 5 Block Trade Symbols by Volume	
Symbol	TSX Block Volume
RON	8,767,100
ATA	4,753,500
PIF	2,292,900
XIU	1,348,500
MSL	1,261,600

TSXV	
Daily Volume	127,379,607
Daily Value	\$36,119,867
Daily Trades	12,151
Daily Symbols Traded	896

TSXV ANONYMOUS TRADING	
Daily Volume	51,256,633
Daily Value	\$8,994,992
Average Trade Size	10,542
% TSXV Volume	40.24%



Top 20 TSXV Symbols by Volume		
Symbol	TSXV Volume	TSXV Value
TWM	10,053,672	\$14,003,660
LAD	6,244,514	\$378,382
PMI	4,975,786	\$348,444
ABR	4,329,020	\$43,310
VGD	3,224,709	\$104,000
FLX	2,079,000	\$20,790
MKN	2,073,575	\$34,851
DLS	2,063,800	\$1,149,975
FAS	1,939,778	\$38,859
TUF	1,883,683	\$64,550
AME	1,643,357	\$58,518
PHM	1,601,293	\$752,020
TTM	1,524,000	\$120,600
CST	1,509,823	\$306,111
SSP	1,455,166	\$201,944
LXE	1,398,037	\$1,227,503
WPQ	1,364,000	\$41,945
MSD	1,178,800	\$249,504
GSV	1,121,012	\$1,076,593
FF	986,508	\$371,601

Top 20 TSXV Symbols by Value		
Symbol	TSXV Volume	TSXV Value
TWM	10,053,672	\$14,003,660
LXE	1,398,037	\$1,227,503
DLS	2,063,800	\$1,149,975
GSV	1,121,012	\$1,076,593
MPH	107,090	\$757,068
PHM	1,601,293	\$752,020
NXE	622,905	\$522,558
PNE	612,220	\$500,336
RUF.UN	70,890	\$469,266
KAM	504,498	\$456,880
XAU	90,282	\$390,872
CGC	145,841	\$388,003
LAD	6,244,514	\$378,382
FF	986,508	\$371,601
NMX	882,855	\$366,810
PMI	4,975,786	\$348,444
PTK	316,376	\$315,787
CST	1,509,823	\$306,111
NSP	795,625	\$295,463
MSD	1,178,800	\$249,504

Dark TSX/TSXV Trading			
Volume	12,598,290	Daily Trades	40,897
Value	276,339,182	Daily Symbols Traded	990