



February 5, 2016

For more information, email trading_sales@tsx.com
 Visit our blog at <http://exchange.tmx.com/>

Indices	February 5 Close	Previous Close	Change	% Change
S&P/TSX Composite Index	12,763.99	12,774.50	-10.51	-0.08 %
S&P/TSX 60 Index	752.04	752.18	-0.15	-0.02 %
S&P/TSX Venture Composite	508.15	504.48	3.67	0.73 %
S&P/TSX Completion Index	804.02	806.33	-2.31	-0.29 %
S&P/TSX Smallcap Index	471.41	469.41	2.00	0.43 %

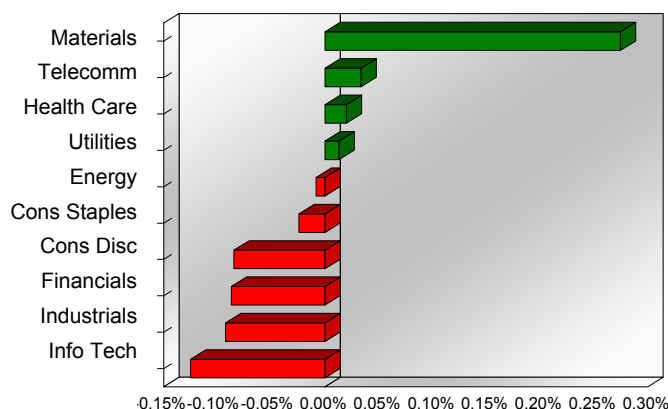
S&P/TSX Composite Index		
Advancers	Decliners	Unchanged
99	139	2

S&P/TSX Composite Index			
Top 10 Index Contributors		Top 10 Index Detractors	
Constituent	Index Contribution	Constituent	Index Contribution
G	7.46	CNR	-9.46
ABX	7.23	GIB.A	-5.68
BCE	4.47	ATD.B	-4.90
SLW	3.73	TD	-3.39
K	3.65	BAM.A	-3.36
SAP	3.49	ENB	-3.30
FNV	3.20	TRI	-2.69
VRX	2.81	CSU	-2.65
AEM	2.68	CCL.B	-2.49
TRP	2.14	RCI.B	-2.25

S&P/TSX Composite Index			
Top 10 Advancers		Top 10 Decliners	
Constituent	Return	Constituent	Return
K	14.23%	SW	-24.50%
SSO	11.61%	KXS	-13.12%
PAA	10.97%	P	-12.79%
AGI	9.02%	BBD.B	-8.05%
IMG	8.86%	DSG	-6.78%
ASR	7.73%	CCL.B	-6.05%
FR	7.56%	IT	-5.91%
ELD	7.28%	NBD	-5.40%
SLW	6.28%	CIG	-5.14%
G	6.28%	GIB.A	-4.29%

S&P/TSX Composite Index				
Sector	# of Index Constituents	Weight	Market Cap (\$B)	Index Contribution
Materials	46	10.10 %	\$166.67	35.07
Telecommunication Services	4	5.83 %	\$94.18	4.27
Health Care	5	3.02 %	\$48.79	2.53
Utilities	12	2.51 %	\$40.55	1.64
Energy	55	18.57 %	\$298.21	-1.09
Consumer Staples	10	4.59 %	\$73.36	-3.12
Consumer Discretionary	26	6.53 %	\$103.47	-10.86
Financials	46	37.68 %	\$603.84	-11.14
Industrials	23	8.10 %	\$128.63	-11.83
Information Technology	13	3.07 %	\$47.32	-16.00
S&P/TSX Composite Index	240	100.00 %	\$1,605.02	-10.51

S&P/TSX Composite Index - Sectors Returns



This report is published by TSX Inc. TSX Inc. does not guarantee either the completeness or the accuracy of this information. The information contained in this report is provided for informational purposes only and you agree not to rely upon the information contained in this report for any trading, business or financial purpose. These sheets are printed in Canada and issued by TSX Inc. under the express condition, to which everyone receiving or making use thereof assents, that no liability shall be incurred by TSX Inc. or its affiliated companies or any other vendor or donor, including, without limitation, for reliance on or for any errors or inaccuracies in this report. Neither TMX Group Limited, TSX Inc., nor any of their affiliated companies, guarantees the completeness of the information contained in this document and are not responsible for any errors or omission in or your use of, or reliance on, the information. This publication is under copyright. © 2015 TSX Inc. All rights reserved. Do not copy, distribute, sell or modify this publication without the prior written consent of TSX Inc. www.tmx.com/trading

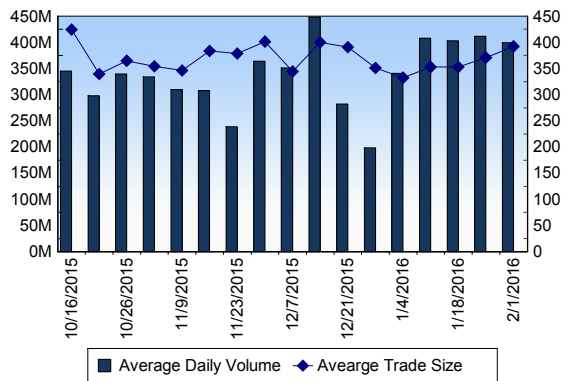
TSX

Daily Volume	392,870,577
Daily Value	\$4,857,113,647
Daily Trades	941,757
Daily Symbols Traded	1,830

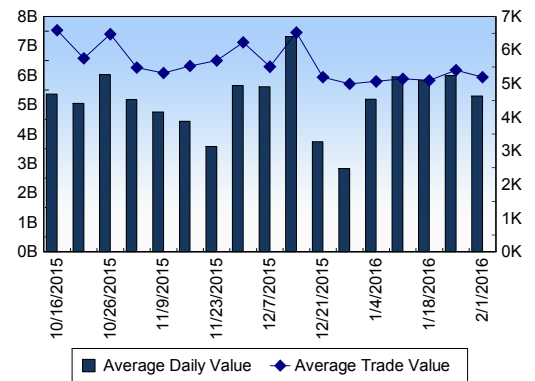
TSX ANONYMOUS TRADING

Daily Volume	136,876,511
Daily Value	\$1,951,211,351
Average Trade Size	330
% TSX Volume	34.84 %

TSX Volume



TSX Value (in Canadian Dollars)



Top 20 TSX Symbols by Volume

Symbol	TSX Volume	TSX Value
BBD.B	14,460,983	\$11,904,650
LSG	14,336,621	\$20,619,860
FM	9,952,663	\$37,502,880
K	8,474,305	\$25,232,920
YRI	8,208,960	\$25,131,277
HOU	7,881,615	\$25,012,936
ABX	7,692,199	\$119,579,152
BTE	5,824,372	\$16,389,063
TCK.B	5,698,406	\$34,131,645
LN	5,587,000	\$85,733
ECA	5,420,346	\$33,225,594
IMP	5,291,717	\$2,203,503
LUN	4,876,017	\$17,508,835
SLW	4,838,128	\$93,221,404
G	4,757,026	\$87,870,264
MFC	4,716,309	\$88,568,764
BTO	4,674,440	\$5,234,330
P	3,970,488	\$8,831,941
WCP	3,682,137	\$26,160,906
CNQ	3,616,946	\$109,123,324

Top 20 TSX Symbols by Value

Symbol	TSX Volume	TSX Value
RY	2,257,835	\$160,354,492
ABX	7,692,199	\$119,579,152
CNQ	3,616,946	\$109,123,324
CNR	1,372,885	\$101,956,506
BNS	1,687,340	\$95,807,126
TD	1,820,290	\$95,324,836
SLW	4,838,128	\$93,221,404
SU	2,886,726	\$91,848,684
BCE	1,547,505	\$89,480,126
MFC	4,716,309	\$88,568,764
G	4,757,026	\$87,870,264
TRP	1,627,262	\$79,706,404
CM	880,322	\$79,003,969
CP	463,623	\$77,467,869
BMO	854,271	\$63,384,564
RON	2,622,338	\$61,299,633
ENB	1,301,783	\$61,286,735
HOD	2,165,422	\$55,691,429
FNV	821,059	\$55,666,562
GIB.A	913,494	\$53,551,666

ETF Trading

Daily Volume	32,302,480	Average Trade Value	\$9,404
Daily Value	\$434,350,883	Average Trade Size	699
# Trades	46,189	# of ETFs Traded	402

Top 10 ETFs by TSX Volume

Symbol	Market Volume	Market Value
HOU	7,881,615	\$25,012,936
XEG	2,665,507	\$26,187,224
HGD	2,511,332	\$18,673,753
HOD	2,165,422	\$55,691,429
XIU	1,960,316	\$37,072,738
HNU	1,431,757	\$15,327,416
XGD	1,296,499	\$12,753,258
HGU	1,054,114	\$25,183,928
HVI	917,590	\$6,235,725
XFN	800,403	\$22,926,374

Top 10 ETFs by TSX Value

Symbol	Market Volume	Market Value
HOD	2,165,422	\$55,691,429
XIU	1,960,316	\$37,072,738
HVU	643,423	\$32,943,752
XEG	2,665,507	\$26,187,224
HGU	1,054,114	\$25,183,928
HOU	7,881,615	\$25,012,936
XFN	800,403	\$22,926,374
HGD	2,511,332	\$18,673,753
HNU	1,431,757	\$15,327,416
XGD	1,296,499	\$12,753,258

Block Trades

827

Non Block Trades

940,930

Top 5 Block Trade Brokers by Volume

Broker	TSX Block Volume
CIBC WORLD MARKETS INC.	8,227,900
TD SECURITIES INC.	7,677,300
CORMARK SECURITIES INC.	7,233,400
CANACCORD GENUITY CORP	5,438,500
DUNDEE SECURITIES LTD.	4,394,600

Top 5 Block Trade Symbols by Volume

Symbol	TSX Block Volume
LSG	3,401,300
K	2,861,300
SLW	2,421,000
ATA	2,165,100
LRE	1,720,000

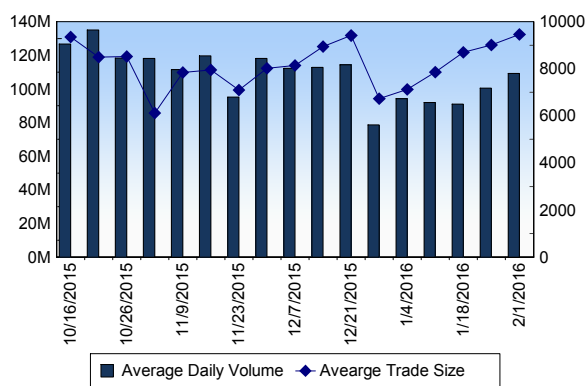
TSXV

Daily Volume	101,193,272
Daily Value	\$20,440,776
Daily Trades	10,924
Daily Symbols Traded	863

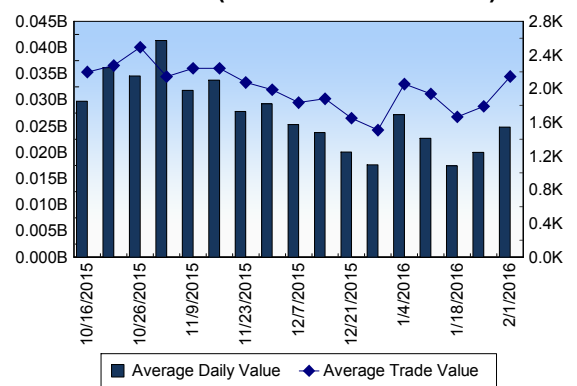
TSXV ANONYMOUS TRADING

Daily Volume	36,789,385
Daily Value	\$6,275,196
Average Trade Size	9,753
% TSXV Volume	36.36%

TSXV Volume



TSXV Value (in Canadian Dollars)



Top 20 TSXV Symbols by Volume

Symbol	TSXV Volume	TSXV Value
ITM	5,493,611	\$151,071
FAS	4,227,468	\$100,626
NFK.H	2,055,809	\$20,760
LAB	1,854,349	\$131,778
DEC	1,765,601	\$44,598
ICG	1,545,940	\$547,666
MNY	1,269,000	\$28,790
VID	1,266,950	\$51,228
KAM	1,214,931	\$1,103,207
VGD	1,203,800	\$39,324
MTO	1,190,900	\$54,596
NIC	1,090,000	\$10,900
PHM	1,084,171	\$506,575
MKN	1,081,500	\$10,818
FF	1,065,343	\$430,451
FPC	998,600	\$359,572
AVT	974,000	\$9,740
AZX	890,000	\$19,040
WPQ	863,000	\$25,890
FCF	832,667	\$120,115

Top 20 TSXV Symbols by Value

Symbol	TSXV Volume	TSXV Value
KAM	1,214,931	\$1,103,207
CGC	339,520	\$893,273
TWM	569,002	\$822,010
NXE	820,275	\$687,375
ICG	1,545,940	\$547,666
ROG	686,600	\$516,488
XAU	129,827	\$514,172
NYX	192,842	\$513,838
PHM	1,084,171	\$506,575
PNE	529,500	\$443,535
FF	1,065,343	\$430,451
FPC	998,600	\$359,572
MPH	42,084	\$294,865
GRZ	68,486	\$271,475
PTK	262,545	\$267,284
TGM	767,907	\$253,279
RUF.UN	38,075	\$253,037
GSV	201,767	\$203,538
LND	325,984	\$194,373
DLS	317,543	\$191,361

Dark TSX/TSXV Trading

Volume	12,105,740	Daily Trades	35,157
Value	230,150,970	Daily Symbols Traded	924