



February 10, 2016

For more information, email trading_sales@tsx.com
 Visit our blog at <http://exchange.tmx.com/>

Indices	February 10 Close	Previous Close	Change	% Change
S&P/TSX Composite Index	12,185.72	12,282.65	-96.93	-0.79 %
S&P/TSX 60 Index	716.97	723.80	-6.82	-0.94 %
S&P/TSX Venture Composite	505.31	505.49	-0.17	-0.04 %
S&P/TSX Completion Index	771.04	773.28	-2.24	-0.29 %
S&P/TSX Smallcap Index	451.92	453.08	-1.16	-0.26 %

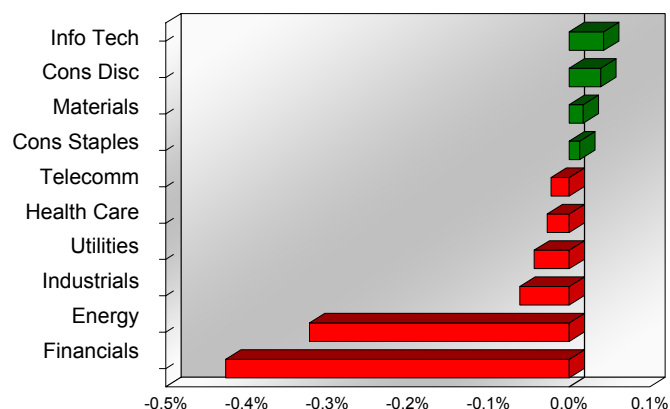
S&P/TSX Composite Index		
Advancers	Decliners	Unchanged
88	147	5

S&P/TSX Composite Index			
Top 10 Index Contributors		Top 10 Index Detractors	
Constituent	Index Contribution	Constituent	Index Contribution
OTC	5.74	RY	-17.12
IFC	5.39	BNS	-14.45
ABX	5.00	TD	-8.55
G	4.56	CVE	-8.22
BAM.A	3.30	CNQ	-6.61
ATD.B	3.07	BMO	-6.34
TRP	2.59	CNR	-5.55
K	1.82	ENB	-5.29
MG	1.59	SU	-4.71
GIL	1.52	CM	-4.68

S&P/TSX Composite Index			
Top 10 Advancers		Top 10 Decliners	
Constituent	Return	Constituent	Return
OTC	9.99%	ATH	-12.95%
IMG	7.87%	FM	-11.25%
IFC	6.56%	MEG	-10.79%
K	5.92%	POU	-8.58%
NG	4.05%	ECA	-8.47%
CIG	3.96%	CVE	-8.40%
TIH	3.62%	AQN	-7.80%
BIR	3.58%	CF	-7.37%
G	3.52%	KEL	-6.67%
ABX	3.47%	CG	-6.59%

S&P/TSX Composite Index				
Sector	# of Index Constituents	Weight	Market Cap (\$B)	Index Contribution
Information Technology	13	3.01 %	\$47.16	5.25
Consumer Discretionary	26	6.48 %	\$100.74	4.81
Materials	46	10.54 %	\$163.02	2.14
Consumer Staples	10	4.65 %	\$72.00	1.63
Telecommunication Services	4	6.05 %	\$93.13	-2.74
Health Care	5	2.85 %	\$43.65	-3.33
Utilities	12	2.49 %	\$37.86	-5.31
Industrials	23	8.42 %	\$129.16	-7.52
Energy	55	18.08 %	\$274.24	-39.55
Financials	46	37.42 %	\$571.34	-52.32
S&P/TSX Composite Index	240	100.00 %	\$1,532.30	-96.93

S&P/TSX Composite Index - Sectors Returns



This report is published by TSX Inc. TSX Inc. does not guarantee either the completeness or the accuracy of this information. The information contained in this report is provided for informational purposes only and you agree not to rely upon the information contained in this report for any trading, business or financial purpose. These sheets are printed in Canada and issued by TSX Inc. under the express condition, to which everyone receiving or making use thereof assents, that no liability shall be incurred by TSX Inc. or its affiliated companies or any other vendor or donor, including, without limitation, for reliance on or for any errors or inaccuracies in this report. Neither TMX Group Limited, TSX Inc., nor any of their affiliated companies, guarantees the completeness of the information contained in this document and are not responsible for any errors or omission in or your use of, or reliance on, the information. This publication is under copyright. © 2015 TSX Inc. All rights reserved. Do not copy, distribute, sell or modify this publication without the prior written consent of TSX Inc. www.tmx.com/trading

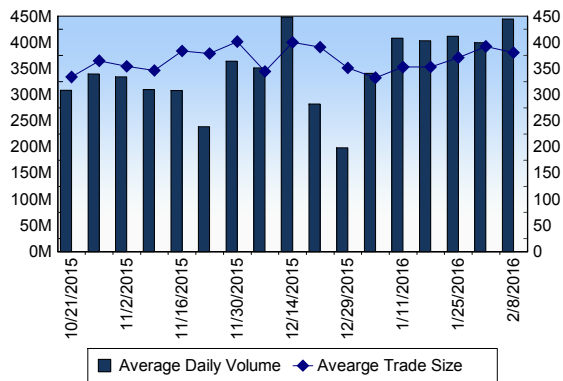
TSX

Daily Volume	420,388,572
Daily Value	\$6,165,063,083
Daily Trades	1,114,184
Daily Symbols Traded	1,851

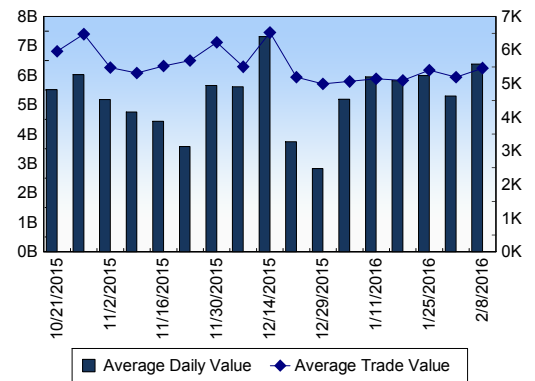
TSX ANONYMOUS TRADING

Daily Volume	142,138,751
Daily Value	\$2,413,537,962
Average Trade Size	281
% TSX Volume	33.81 %

TSX Volume



TSX Value (in Canadian Dollars)



Top 20 TSX Symbols by Volume

Symbol	TSX Volume	TSX Value
BTO	16,350,386	\$20,185,659
HOU	15,014,206	\$38,431,174
K	10,063,956	\$34,568,648
ABX	8,892,138	\$137,776,842
YRI	8,451,511	\$27,215,459
BBD.B	8,415,008	\$6,829,862
TST	8,409,678	\$891,973
FM	7,892,760	\$24,702,842
LSG	7,187,137	\$10,791,417
WCP	6,473,299	\$38,693,730
IMG	6,457,085	\$17,454,452
TD	6,428,091	\$321,321,906
XIU	6,294,307	\$115,051,764
G	5,783,413	\$112,897,855
CVE	5,731,855	\$79,809,516
BTE	5,676,100	\$13,848,820
ECA	5,424,470	\$27,932,752
FTS	5,301,958	\$199,609,628
SGY	4,791,609	\$9,680,453
CNQ	4,533,873	\$125,080,119

Top 20 TSX Symbols by Value

Symbol	TSX Volume	TSX Value
TD	6,428,091	\$321,321,906
RY	3,279,376	\$220,659,186
FTS	5,301,958	\$199,609,628
BNS	3,069,038	\$164,632,445
CP	945,771	\$164,339,708
ABX	8,892,138	\$137,776,842
BMO	1,867,294	\$133,166,217
CNQ	4,533,873	\$125,080,119
SU	4,120,139	\$122,885,850
CM	1,370,301	\$117,914,849
XIU	6,294,307	\$115,051,764
BCE	1,986,759	\$114,914,297
G	5,783,413	\$112,897,855
CNR	1,297,018	\$98,951,023
ENB	2,137,632	\$94,473,664
FNV	1,251,595	\$86,680,964
CSU.DB	773,000	\$83,867,780
OTC	1,247,883	\$82,314,889
CVE	5,731,855	\$79,809,516
MFC	4,499,501	\$78,715,652

ETF Trading

Daily Volume	47,019,587	Average Trade Value	\$10,638
Daily Value	\$587,478,539	Average Trade Size	851
# Trades	55,223	# of ETFs Traded	400

Top 10 ETFs by TSX Volume

Symbol	Market Volume	Market Value
HOU	15,014,206	\$38,431,174
XIU	6,294,307	\$115,051,764
HGD	3,277,551	\$22,520,875
XEG	2,753,732	\$24,924,191
XGD	1,743,375	\$17,691,154
XFN	1,732,543	\$47,394,685
HGU	1,485,698	\$37,010,445
HOD	1,470,914	\$46,045,228
HVI	927,410	\$5,972,192
HNU	767,804	\$8,120,901

Top 10 ETFs by TSX Value

Symbol	Market Volume	Market Value
XIU	6,294,307	\$115,051,764
XFN	1,732,543	\$47,394,685
HOD	1,470,914	\$46,045,228
HOU	15,014,206	\$38,431,174
HGU	1,485,698	\$37,010,445
HVU	529,542	\$30,094,175
XEG	2,753,732	\$24,924,191
HGD	3,277,551	\$22,520,875
XGD	1,743,375	\$17,691,154
XSP	728,569	\$15,645,401

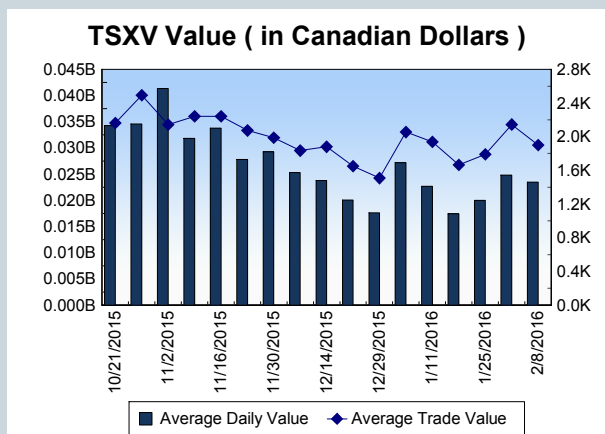
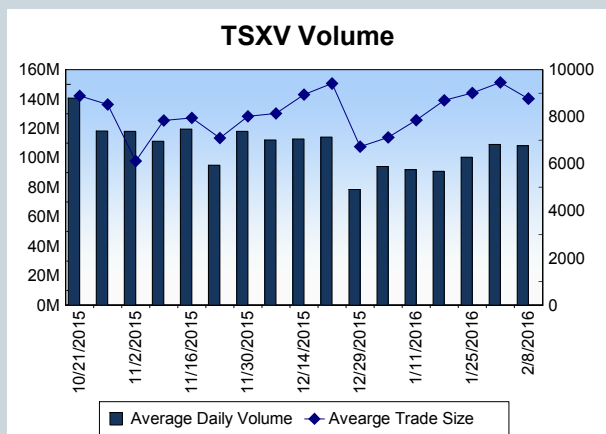
Block Trades	Non Block Trades
1,026	1,113,158

Top 5 Block Trade Brokers by Volume	
Broker	TSX Block Volume
CIBC WORLD MARKETS INC.	10,196,300
TD SECURITIES INC.	9,725,900
NATIONAL BANK FINANCIAL	8,863,500
SOCIETE GENERALE CAPITA	5,441,000
DESJARDINS SECURITIES IN	5,270,000

Top 5 Block Trade Symbols by Volume	
Symbol	TSX Block Volume
BTO	5,701,700
TD	3,451,500
WCP	3,144,000
K	2,775,900
XIU	2,753,000

TSXV	
Daily Volume	94,374,562
Daily Value	\$17,784,744
Daily Trades	9,840
Daily Symbols Traded	891

TSXV ANONYMOUS TRADING	
Daily Volume	38,054,762
Daily Value	\$6,263,833
Average Trade Size	10,636
% TSXV Volume	40.32%



Top 20 TSXV Symbols by Volume		
Symbol	TSXV Volume	TSXV Value
PHM	3,858,904	\$1,825,552
LAD	2,132,500	\$159,575
PGC	1,679,000	\$16,790
NXE	1,553,622	\$1,490,387
FLX	1,523,000	\$22,845
CRS	1,451,106	\$58,064
PMI	1,430,364	\$107,176
CZH	1,308,333	\$15,398
SMI	1,248,205	\$256,204
COL	1,244,500	\$19,015
TGM	1,179,427	\$375,099
AEN	1,144,000	\$28,600
AAO	1,132,000	\$22,640
EAS	1,093,000	\$11,045
ITM	1,080,734	\$21,615
AOS	1,064,000	\$117,290
SHL	1,050,000	\$12,795
LRN	1,003,000	\$20,060
VGD	1,002,446	\$35,086
FF	891,082	\$354,933

Top 20 TSXV Symbols by Value		
Symbol	TSXV Volume	TSXV Value
PHM	3,858,904	\$1,825,552
NXE	1,553,622	\$1,490,387
TWM	596,749	\$832,354
CGC	186,856	\$492,530
TGM	1,179,427	\$375,099
FF	891,082	\$354,933
ROG	396,972	\$340,782
NYX	117,921	\$315,437
KAM	287,198	\$274,033
TIC	652,300	\$266,250
SMI	1,248,205	\$256,204
PTK	221,115	\$221,642
PTG	458,000	\$216,340
LXE	214,900	\$194,286
PNE	212,438	\$180,635
WED	74,739	\$176,189
CXV	740,700	\$173,072
LIX	232,930	\$167,690
LAD	2,132,500	\$159,575
LLG	335,816	\$150,174

Dark TSX/TSXV Trading			
Volume	12,263,940	Daily Trades	38,266
Value	257,332,583	Daily Symbols Traded	1,066