



February 17, 2016

For more information, email [trading\\_sales@tsx.com](mailto:trading_sales@tsx.com)  
 Visit our blog at <http://exchange.tmx.com/>

Indices	February 17 Close	Previous Close	Change	% Change
S&P/TSX Composite Index	12,867.16	12,554.98	312.19	2.49 %
S&P/TSX 60 Index	757.82	739.68	18.14	2.45 %
S&P/TSX Venture Composite	518.04	510.40	7.64	1.50 %
S&P/TSX Completion Index	811.54	790.99	20.55	2.60 %
S&P/TSX Smallcap Index	476.58	464.18	12.41	2.67 %

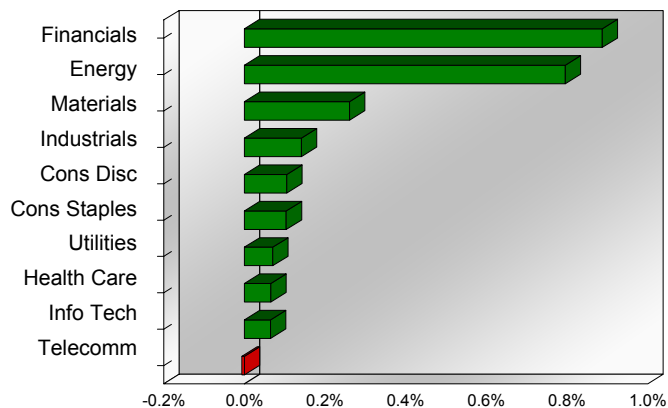
S&P/TSX Composite Index		
Advancers	Decliners	Unchanged
209	31	0

S&P/TSX Composite Index			
Top 10 Index Contributors		Top 10 Index Detractors	
Constituent	Index Contribution	Constituent	Index Contribution
SU	21.61	AC	-2.30
MFC	19.60	T	-1.72
RY	18.19	AEM	-1.64
CNQ	16.97	FFH	-1.55
BNS	11.10	G	-0.79
TD	10.62	ELD	-0.63
POT	10.43	YRI	-0.38
BAM.A	9.75	CIG	-0.37
BMO	7.46	CG	-0.20
ATD.B	7.30	CF	-0.19

S&P/TSX Composite Index			
Top 10 Advancers		Top 10 Decliners	
Constituent	Return	Constituent	Return
FM	25.58%	AC	-12.13%
BBD.B	21.11%	CF	-6.23%
TCK.B	18.59%	CIG	-3.07%
HBM	16.61%	ELD	-2.81%
TA	16.43%	SSO	-2.58%
POU	14.22%	CG	-2.44%
RUS	14.12%	P	-2.37%
TOG	13.58%	ASR	-2.24%
BNE	11.31%	TXG	-2.04%
KEL	10.93%	AEM	-2.00%

S&P/TSX Composite Index				
Sector	# of Index Constituents	Weight	Market Cap (\$B)	Index Contribution
Financials	46	37.51 %	\$606.24	111.41
Energy	55	18.00 %	\$296.65	99.83
Materials	46	10.67 %	\$172.61	32.67
Industrials	23	8.35 %	\$134.06	17.74
Consumer Discretionary	26	6.56 %	\$105.20	13.18
Consumer Staples	10	4.61 %	\$74.42	13.02
Utilities	12	2.39 %	\$38.88	8.82
Health Care	5	2.92 %	\$47.21	8.24
Information Technology	13	3.07 %	\$49.45	8.06
Telecommunication Services	4	5.91 %	\$93.26	-0.80
<b>S&amp;P/TSX Composite Index</b>	<b>240</b>	<b>100.00 %</b>	<b>\$1,617.99</b>	<b>312.19</b>

S&P/TSX Composite Index - Sectors Returns



This report is published by TSX Inc. TSX Inc. does not guarantee either the completeness or the accuracy of this information. The information contained in this report is provided for informational purposes only and you agree not to rely upon the information contained in this report for any trading, business or financial purpose. These sheets are printed in Canada and issued by TSX Inc. under the express condition, to which everyone receiving or making use thereof assents, that no liability shall be incurred by TSX Inc. or its affiliated companies or any other vendor or donor, including, without limitation, for reliance on or for any errors or inaccuracies in this report. Neither TMX Group Limited, TSX Inc., nor any of their affiliated companies, guarantees the completeness of the information contained in this document and are not responsible for any errors or omission in or your use of, or reliance on, the information. This publication is under copyright. © 2015 TSX Inc. All rights reserved. Do not copy, distribute, sell or modify this publication without the prior written consent of TSX Inc. [www.tmx.com/trading](http://www.tmx.com/trading)

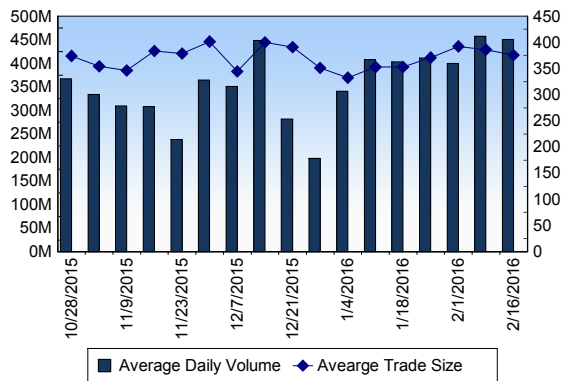
## TSX

Daily Volume	493,808,920
Daily Value	\$6,543,906,415
Daily Trades	1,296,080
Daily Symbols Traded	1,876

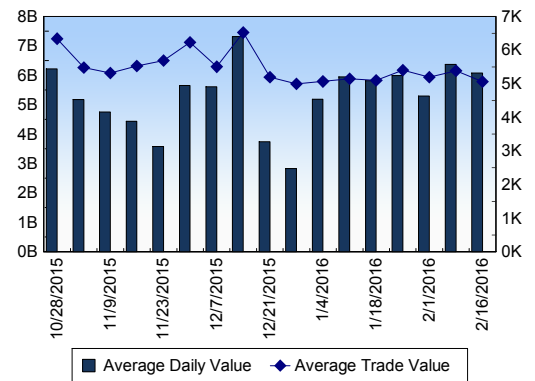
## TSX ANONYMOUS TRADING

Daily Volume	152,825,253
Daily Value	\$2,369,022,630
Average Trade Size	299
% TSX Volume	30.95 %

### TSX Volume



### TSX Value ( in Canadian Dollars )



### Top 20 TSX Symbols by Volume

Symbol	TSX Volume	TSX Value
BBD.B	28,069,157	\$30,529,739
FM	12,003,559	\$55,525,510
HOU	11,987,556	\$35,672,593
TCK.B	11,423,877	\$91,470,483
BTE	10,873,831	\$29,203,600
MFC	9,490,505	\$166,139,298
YRI	7,662,435	\$26,062,544
BTO	7,622,840	\$10,310,829
ABX	6,265,124	\$101,414,526
ECA	6,081,880	\$31,991,274
K	5,963,711	\$22,585,689
ELD	5,647,062	\$21,554,925
SU	5,281,800	\$171,084,073
NMI	5,242,381	\$9,137,690
AC	5,209,920	\$39,239,232
LRE	4,813,551	\$1,775,784
TOG	4,720,179	\$27,411,576
G	4,702,707	\$95,654,025
SII	4,370,837	\$7,833,684
LUN	4,321,384	\$16,803,007

### Top 20 TSX Symbols by Value

Symbol	TSX Volume	TSX Value
RY	3,198,471	\$225,535,521
SU	5,281,800	\$171,084,073
MFC	9,490,505	\$166,139,298
TD	3,146,348	\$164,795,025
BCE	2,272,268	\$132,043,908
CM	1,437,296	\$130,068,816
BNS	2,252,367	\$126,203,719
BMO	1,590,385	\$118,171,801
CNR	1,484,315	\$115,829,575
ENB	2,445,647	\$111,588,004
CNQ	3,648,521	\$107,377,657
ABX	6,265,124	\$101,414,526
MG	2,048,247	\$98,240,963
T	2,555,879	\$98,222,216
G	4,702,707	\$95,654,025
TRP	1,848,430	\$92,253,675
TCK.B	11,423,877	\$91,470,483
ATD.B	1,448,941	\$84,539,456
FNV	1,116,147	\$81,206,279
VRX	615,864	\$80,016,111

### ETF Trading

Daily Volume	39,711,611	Average Trade Value	\$8,914
Daily Value	\$517,178,389	Average Trade Size	684
# Trades	58,020	# of ETFs Traded	399

### Top 10 ETFs by TSX Volume

Symbol	Market Volume	Market Value
HOU	11,987,556	\$35,672,593
XIU	3,632,703	\$69,069,337
HOD	2,200,624	\$55,267,510
HGD	2,035,437	\$12,512,656
XEG	1,875,958	\$18,062,491
HGU	1,835,953	\$49,766,507
HNU	1,251,521	\$11,844,604
XGD	1,248,349	\$13,235,028
HSU	757,520	\$20,290,220
ZPR	715,065	\$6,238,575

### Top 10 ETFs by TSX Value

Symbol	Market Volume	Market Value
XIU	3,632,703	\$69,069,337
HOD	2,200,624	\$55,267,510
HGU	1,835,953	\$49,766,507
HOU	11,987,556	\$35,672,593
HSU	757,520	\$20,290,220
XEG	1,875,958	\$18,062,491
XSP	649,058	\$14,332,996
XGD	1,248,349	\$13,235,028
HGD	2,035,437	\$12,512,656
HNU	1,251,521	\$11,844,604

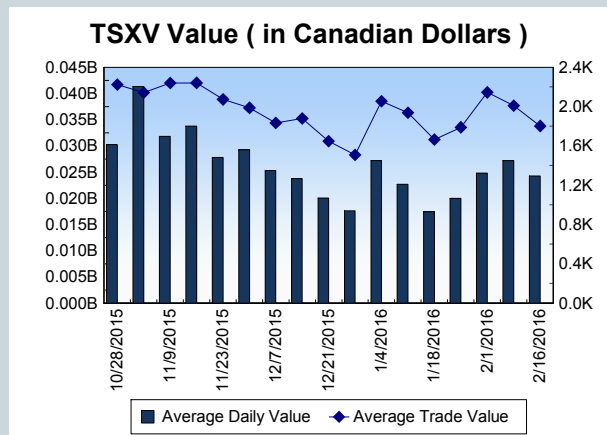
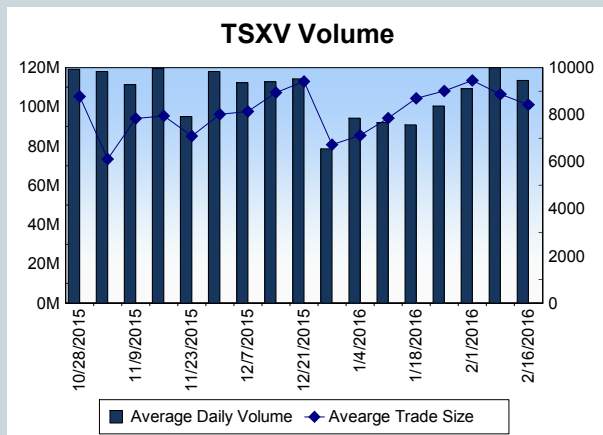
<b>Block Trades</b>	<b>Non Block Trades</b>
1,032	1,295,048

Top 5 Block Trade Brokers by Volume	
Broker	TSX Block Volume
TD SECURITIES INC.	13,090,300
GMP SECURITIES L.P.	8,992,900
CIBC WORLD MARKETS INC.	6,534,800
CORMARK SECURITIES INC.	5,436,700
NATIONAL BANK FINANCIAL	4,756,800

Top 5 Block Trade Symbols by Volume	
Symbol	TSX Block Volume
SII	3,815,400
NMI	3,600,000
LRE	3,268,000
DHX.B	2,280,900
MFC	2,228,700

TSXV	
Daily Volume	115,636,633
Daily Value	\$25,267,878
Daily Trades	13,163
Daily Symbols Traded	933

TSXV ANONYMOUS TRADING	
Daily Volume	48,153,303
Daily Value	\$9,158,482
Average Trade Size	9,831
% TSXV Volume	41.64%



Top 20 TSXV Symbols by Volume		
Symbol	TSXV Volume	TSXV Value
XOP	3,684,500	\$141,810
EQT	3,492,013	\$192,093
LRN	3,348,825	\$66,929
PHM	3,042,941	\$1,291,721
ARC	2,881,000	\$28,810
ROE	1,972,350	\$203,059
PMI	1,686,726	\$126,614
LAD	1,658,987	\$149,389
ERG	1,599,500	\$291,600
AZX	1,554,000	\$44,880
VGD	1,318,500	\$46,148
TGM	1,292,756	\$426,563
BBI	1,272,261	\$178,116
OX	1,258,850	\$25,042
ABR	1,209,500	\$18,143
WPQ	1,194,000	\$42,540
CXV	1,137,183	\$279,007
TWM	1,130,789	\$1,579,804
ZAD	1,076,727	\$119,029
GTP	1,053,124	\$106,210

Top 20 TSXV Symbols by Value		
Symbol	TSXV Volume	TSXV Value
TWM	1,130,789	\$1,579,804
SRX	459,716	\$1,539,360
PHM	3,042,941	\$1,291,721
PTK	1,017,859	\$1,035,910
CGC	310,643	\$861,696
PNE	593,274	\$478,082
TGM	1,292,756	\$426,563
KAM	389,421	\$419,401
INP	229,700	\$395,797
RUF.UN	52,609	\$345,601
ICG	909,707	\$338,618
GRC	451,464	\$306,390
ROG	371,884	\$299,857
ERG	1,599,500	\$291,600
CXV	1,137,183	\$279,007
NYX	111,200	\$276,708
NXE	307,293	\$274,971
BGM	682,182	\$262,877
MPH	38,039	\$257,441
SKX	254,775	\$255,846

Dark TSX/TSXV Trading			
Volume	15,143,280	Daily Trades	43,556
Value	303,276,488	Daily Symbols Traded	1,127