



February 22, 2016

For more information, email [trading\\_sales@tsx.com](mailto:trading_sales@tsx.com)  
 Visit our blog at <http://exchange.tmx.com/>

Indices	February 22 Close	Previous Close	Change	% Change
S&P/TSX Composite Index	12,845.63	12,813.40	32.24	0.25 %
S&P/TSX 60 Index	754.45	753.54	0.91	0.12 %
S&P/TSX Venture Composite	534.41	530.79	3.62	0.68 %
S&P/TSX Completion Index	817.50	812.03	5.47	0.67 %
S&P/TSX Smallcap Index	482.85	480.38	2.47	0.51 %

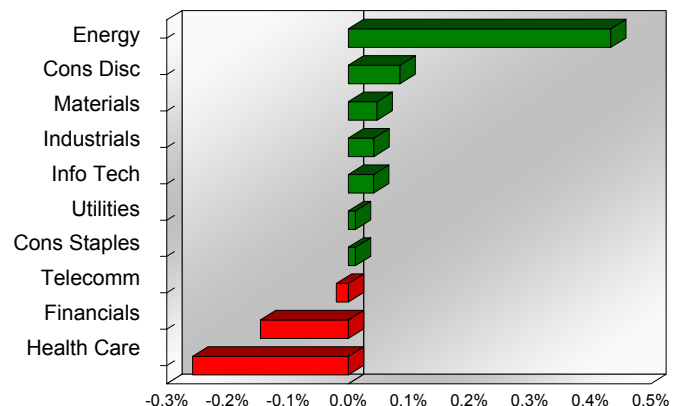
S&P/TSX Composite Index		
Advancers	Decliners	Unchanged
155	81	4

S&P/TSX Composite Index			
Top 10 Index Contributors		Top 10 Index Detractors	
Constituent	Index Contribution	Constituent	Index Contribution
SU	11.84	VRX	-32.75
CNQ	6.53	RY	-9.33
MG	4.77	BNS	-5.07
TRP	4.62	BCE	-4.67
TCK.B	4.36	G	-3.57
ENB	3.71	TD	-2.80
CPG	3.53	BMO	-2.66
CVE	3.18	CM	-1.96
BAM.A	3.02	FFH	-1.54
CSU	3.00	HR.UN	-1.44

S&P/TSX Composite Index			
Top 10 Advancers		Top 10 Decliners	
Constituent	Return	Constituent	Return
TCK.B	14.48%	VRX	-10.97%
KEL	9.68%	IMG	-5.31%
BBD.B	8.77%	AP.UN	-4.68%
D.UN	8.62%	BTO	-4.00%
HBM	8.14%	CXR	-3.79%
IT	7.17%	HR.UN	-3.38%
SGY	7.00%	FSV	-3.10%
TOG	6.91%	BNE	-3.01%
LIF	6.86%	DDC	-2.85%
SES	6.67%	NG	-2.71%

S&P/TSX Composite Index				
Sector	# of Index Constituents	Weight	Market Cap (\$B)	Index Contribution
Energy	55	18.00 %	\$296.99	55.55
Consumer Discretionary	26	6.53 %	\$106.55	10.93
Materials	46	10.93 %	\$176.90	6.09
Industrials	23	8.29 %	\$134.20	5.44
Information Technology	13	3.06 %	\$49.95	5.33
Utilities	12	2.41 %	\$39.04	1.51
Consumer Staples	10	4.68 %	\$75.67	1.51
Telecommunication Services	4	5.89 %	\$94.60	-2.53
Financials	46	37.53 %	\$602.42	-18.60
Health Care	5	2.68 %	\$38.96	-32.99
<b>S&amp;P/TSX Composite Index</b>	<b>240</b>	<b>100.00 %</b>	<b>\$1,615.29</b>	<b>32.24</b>

S&P/TSX Composite Index - Sectors Returns



This report is published by TSX Inc. TSX Inc. does not guarantee either the completeness or the accuracy of this information. The information contained in this report is provided for informational purposes only and you agree not to rely upon the information contained in this report for any trading, business or financial purpose. These sheets are printed in Canada and issued by TSX Inc. under the express condition, to which everyone receiving or making use thereof assents, that no liability shall be incurred by TSX Inc. or its affiliated companies or any other vendor or donor, including, without limitation, for reliance on or for any errors or inaccuracies in this report. Neither TMX Group Limited, TSX Inc., nor any of their affiliated companies, guarantees the completeness of the information contained in this document and are not responsible for any errors or omission in or your use of, or reliance on, the information. This publication is under copyright. © 2015 TSX Inc. All rights reserved. Do not copy, distribute, sell or modify this publication without the prior written consent of TSX Inc. [www.tmx.com/trading](http://www.tmx.com/trading)

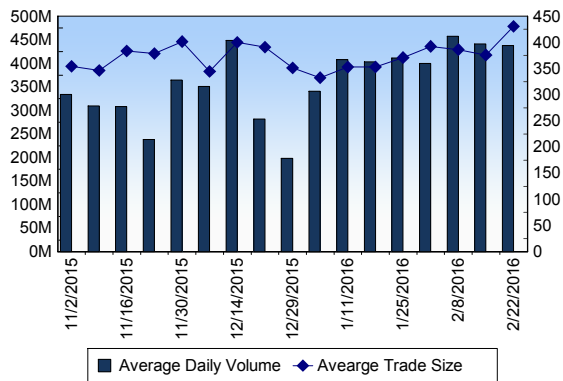
## TSX

Daily Volume	437,811,907
Daily Value	\$6,797,922,123
Daily Trades	1,016,475
Daily Symbols Traded	1,852

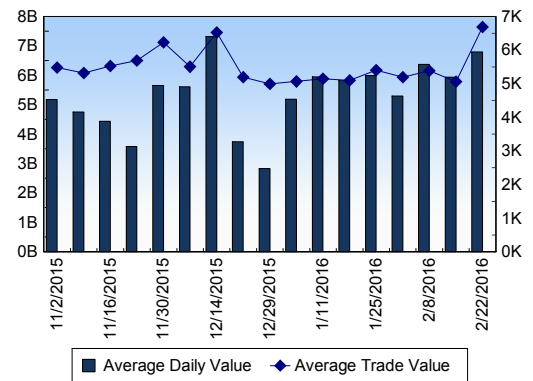
## TSX ANONYMOUS TRADING

Daily Volume	141,110,627
Daily Value	\$2,373,301,991
Average Trade Size	348
% TSX Volume	32.23 %

### TSX Volume



### TSX Value ( in Canadian Dollars )



### Top 20 TSX Symbols by Volume

Symbol	TSX Volume	TSX Value
SPE	16,174,610	\$42,153,614
TCK.B	14,477,408	\$137,633,884
COS	13,518,943	\$125,415,113
EMA	13,097,952	\$602,939,594
FM	12,987,077	\$65,092,233
BBD.B	12,874,535	\$15,824,579
HOU	9,343,583	\$29,088,867
ABX	8,773,788	\$153,105,073
ECA	8,137,340	\$36,235,927
LUN	7,572,583	\$29,656,486
SU	7,429,117	\$250,720,236
YRI	6,190,129	\$22,401,058
MFC	5,842,859	\$103,215,445
K	5,649,330	\$23,032,694
BTO	5,571,762	\$8,060,290
BTE	4,296,873	\$12,141,760
G	4,246,437	\$88,635,894
FNV	3,772,743	\$299,940,750
CS	3,707,784	\$1,409,870
TXG	3,469,886	\$5,417,713

### Top 20 TSX Symbols by Value

Symbol	TSX Volume	TSX Value
EMA	13,097,952	\$602,939,594
FNV	3,772,743	\$299,940,750
SU	7,429,117	\$250,720,236
RY	3,320,534	\$235,865,868
TD	3,427,540	\$179,990,443
VRX	1,468,334	\$156,399,533
ABX	8,773,788	\$153,105,073
BNS	2,651,191	\$148,327,631
ENB	3,157,134	\$139,341,920
TCK.B	14,477,408	\$137,633,884
COS	13,518,943	\$125,415,113
BMO	1,658,081	\$123,414,368
CNR	1,483,594	\$117,349,185
CM	1,158,878	\$104,865,105
BCE	1,773,104	\$103,934,997
MFC	5,842,859	\$103,215,445
CNQ	3,201,529	\$92,422,790
G	4,246,437	\$88,635,894
TRP	1,681,612	\$85,192,329
CP	418,618	\$73,371,698

## ETF Trading

Daily Volume	32,066,854	Average Trade Value	\$9,309
Daily Value	\$401,269,778	Average Trade Size	744
# Trades	43,107	# of ETFs Traded	394

### Top 10 ETFs by TSX Volume

Symbol	Market Volume	Market Value
HOU	9,343,583	\$29,088,867
XIU	3,344,853	\$64,028,413
HOD	2,532,455	\$59,472,189
HGD	2,142,058	\$12,015,730
XEG	1,628,677	\$15,916,853
HNU	1,474,077	\$12,264,368
HXD	1,070,004	\$11,460,781
XGD	804,498	\$8,895,189
HVI	603,376	\$4,335,416
HGU	539,483	\$15,866,385

### Top 10 ETFs by TSX Value

Symbol	Market Volume	Market Value
XIU	3,344,853	\$64,028,413
HOD	2,532,455	\$59,472,189
HOU	9,343,583	\$29,088,867
XEG	1,628,677	\$15,916,853
HGU	539,483	\$15,866,385
HVU	331,032	\$14,666,279
HNU	1,474,077	\$12,264,368
HGD	2,142,058	\$12,015,730
HXD	1,070,004	\$11,460,781
XSP	477,717	\$10,662,125

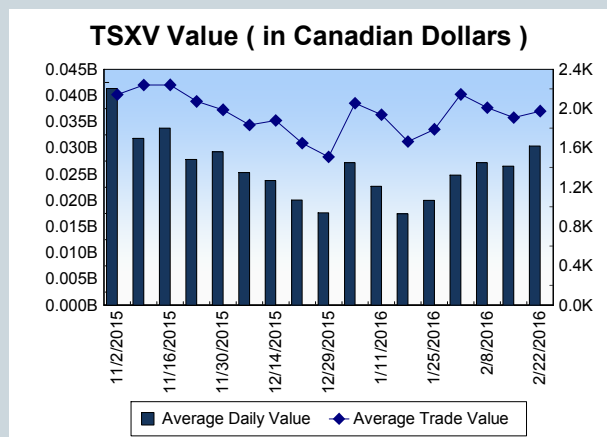
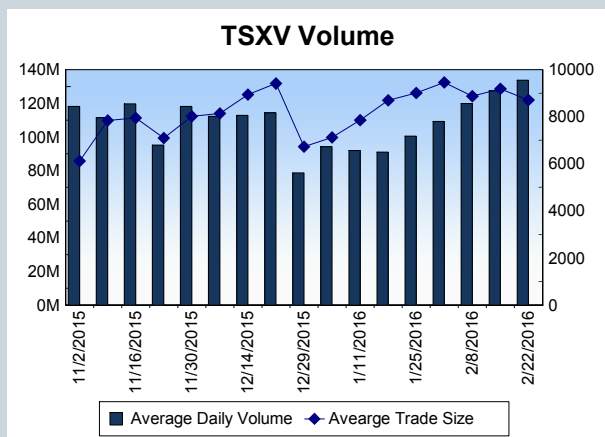
<b>Block Trades</b>	<b>Non Block Trades</b>
1,412	1,015,063

Top 5 Block Trade Brokers by Volume	
Broker	TSX Block Volume
RBC CAPITAL MARKETS	22,573,200
TD SECURITIES INC.	15,248,200
CIBC WORLD MARKETS INC.	13,697,500
BMO NESBITT BURNS INC.	5,195,000
SOCIETE GENERALE CAPITA	4,197,900

Top 5 Block Trade Symbols by Volume	
Symbol	TSX Block Volume
EMA	10,934,500
COS	9,634,700
SU	2,766,200
TCK.B	2,245,600
TXG	2,036,600

TSXV	
Daily Volume	133,759,630
Daily Value	\$30,340,856
Daily Trades	15,362
Daily Symbols Traded	958

TSXV ANONYMOUS TRADING	
Daily Volume	57,662,044
Daily Value	\$11,765,125
Average Trade Size	9,236
% TSXV Volume	43.11%



Top 20 TSXV Symbols by Volume		
Symbol	TSXV Volume	TSXV Value
VID	6,477,920	\$169,794
EDE	3,846,500	\$41,460
NXE	2,614,274	\$2,596,753
MJS	2,545,000	\$248,335
GNT	2,245,000	\$34,050
PMA	1,909,000	\$33,840
TGM	1,461,576	\$558,171
PML	1,425,245	\$203,461
DUG	1,425,066	\$143,261
CCK	1,410,000	\$24,990
AOS	1,407,000	\$168,140
GSI	1,390,000	\$184,015
MML	1,350,000	\$135,000
BGM	1,303,564	\$603,035
SOI	1,291,820	\$197,944
GLK	1,203,950	\$122,120
MTO	1,170,275	\$65,515
EGX	1,159,500	\$29,153
WPQ	1,158,250	\$52,271
AUG	1,147,450	\$1,676,572

Top 20 TSXV Symbols by Value		
Symbol	TSXV Volume	TSXV Value
NXE	2,614,274	\$2,596,753
AUG	1,147,450	\$1,676,572
GRZ	282,599	\$1,640,580
CGC	514,709	\$1,456,182
XAU	181,400	\$913,430
TWM	572,646	\$801,683
KAM	679,507	\$784,575
RUF.UN	98,416	\$661,171
BGM	1,303,564	\$603,035
TGM	1,461,576	\$558,171
PHM	1,064,748	\$446,074
GSV	357,040	\$433,701
ICG	918,004	\$359,705
FF	825,983	\$311,188
NMX	770,074	\$311,181
OPS	341,521	\$295,822
MPH	39,659	\$276,633
ERA	386,728	\$271,638
ATM	654,600	\$261,700
MJS	2,545,000	\$248,335

Dark TSX/TSXV Trading			
Volume	11,554,170	Daily Trades	32,667
Value	224,112,077	Daily Symbols Traded	1,027