



February 29, 2016

For more information, email [trading\\_sales@tsx.com](mailto:trading_sales@tsx.com)  
 Visit our blog at <http://exchange.tmx.com/>

Indices	February 29 Close	Previous Close	Change	% Change
S&P/TSX Composite Index	12,860.35	12,797.79	62.56	0.49 %
S&P/TSX 60 Index	755.27	751.93	3.34	0.44 %
S&P/TSX Venture Composite	541.73	538.06	3.67	0.68 %
S&P/TSX Completion Index	818.61	813.43	5.18	0.64 %
S&P/TSX Smallcap Index	490.51	483.44	7.07	1.46 %

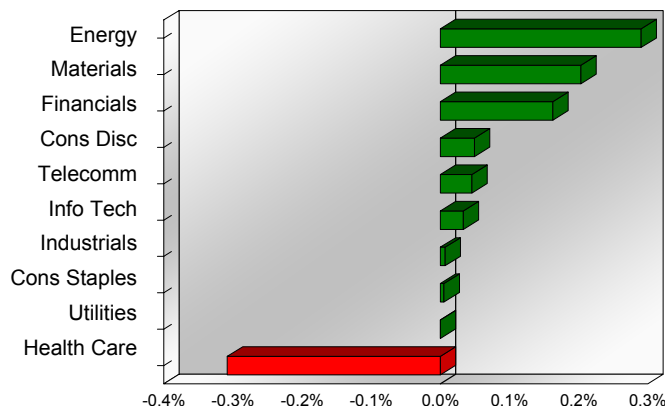
S&P/TSX Composite Index		
Advancers	Decliners	Unchanged
168	66	5

S&P/TSX Composite Index			
Top 10 Index Contributors		Top 10 Index Detractors	
Constituent	Index Contribution	Constituent	Index Contribution
RY	9.20	VRX	-39.09
CNQ	7.74	IFC	-2.69
BNS	7.45	BAM.A	-2.47
ENB	5.56	OCX	-2.28
ABX	4.90	CNR	-2.20
G	4.68	SLF	-1.51
CVE	3.84	POT	-1.26
ECA	3.56	BEP.UN	-1.02
MFC	3.45	STN	-0.61
TD	3.24	MEG	-0.58

S&P/TSX Composite Index			
Top 10 Advancers		Top 10 Decliners	
Constituent	Return	Constituent	Return
ECA	9.96%	VRX	-13.97%
ATA	8.97%	MEG	-9.96%
NGD	7.76%	ARE	-4.91%
VSN	6.71%	CR	-4.48%
AGI	6.53%	AIM	-4.43%
SMF	6.43%	OCX	-4.29%
GTE	6.31%	BEP.UN	-3.38%
POU	6.00%	IFC	-2.96%
BNE	5.56%	CXR	-2.88%
LIF	5.34%	STN	-2.79%

S&P/TSX Composite Index				
Sector	# of Index Constituents	Weight	Market Cap (\$B)	Index Contribution
Energy	54	18.26 %	\$298.90	37.15
Materials	46	11.03 %	\$180.89	25.99
Financials	46	37.06 %	\$599.56	20.85
Consumer Discretionary	26	6.72 %	\$109.10	6.32
Telecommunication Services	4	5.84 %	\$94.77	5.83
Information Technology	13	3.14 %	\$51.08	4.26
Industrials	23	8.25 %	\$132.95	0.89
Consumer Staples	10	4.82 %	\$77.67	0.68
Utilities	12	2.35 %	\$37.80	0.02
Health Care	5	2.55 %	\$36.09	-39.43
<b>S&amp;P/TSX Composite Index</b>	<b>239</b>	<b>100.00 %</b>	<b>\$1,618.80</b>	<b>62.56</b>

S&P/TSX Composite Index - Sectors Returns



This report is published by TSX Inc. TSX Inc. does not guarantee either the completeness or the accuracy of this information. The information contained in this report is provided for informational purposes only and you agree not to rely upon the information contained in this report for any trading, business or financial purpose. These sheets are printed in Canada and issued by TSX Inc. under the express condition, to which everyone receiving or making use thereof assents, that no liability shall be incurred by TSX Inc. or its affiliated companies or any other vendor or donor, including, without limitation, for reliance on or for any errors or inaccuracies in this report. Neither TMX Group Limited, TSX Inc., nor any of their affiliated companies, guarantees the completeness of the information contained in this document and are not responsible for any errors or omission in or your use of, or reliance on, the information. This publication is under copyright. © 2015 TSX Inc. All rights reserved. Do not copy, distribute, sell or modify this publication without the prior written consent of TSX Inc. [www.tmx.com/trading](http://www.tmx.com/trading)

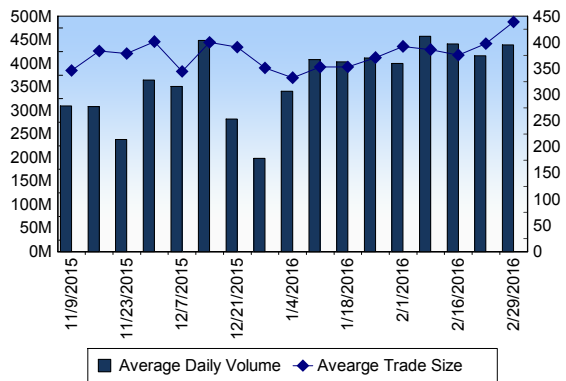
## TSX

Daily Volume	439,374,484
Daily Value	\$6,757,801,614
Daily Trades	1,000,124
Daily Symbols Traded	1,864

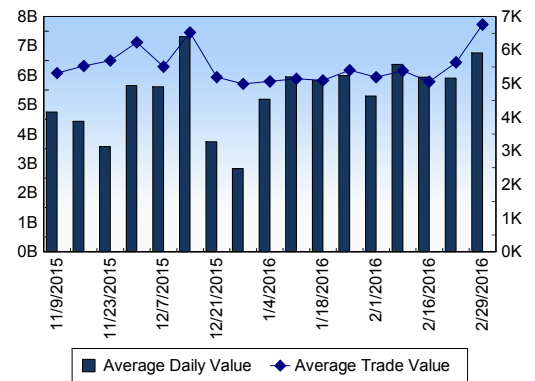
## TSX ANONYMOUS TRADING

Daily Volume	143,279,308
Daily Value	\$2,459,022,819
Average Trade Size	348
% TSX Volume	32.61 %

### TSX Volume



### TSX Value ( in Canadian Dollars )



### Top 20 TSX Symbols by Volume

Symbol	TSX Volume	TSX Value
MEG	14,939,479	\$64,956,167
ECA	12,429,782	\$69,243,437
PGF	10,853,095	\$10,927,141
BBD.B	10,261,660	\$11,065,044
HOU	8,767,081	\$27,188,864
COS	8,651,718	\$79,871,215
SU	7,506,390	\$249,387,277
BTE	7,226,305	\$22,352,225
ABX	6,965,388	\$130,277,529
BIN	6,545,250	\$264,471,591
K	6,397,310	\$25,460,615
YRI	6,131,873	\$23,381,136
G	5,757,806	\$110,541,423
FM	5,488,149	\$27,176,468
MFC	5,405,849	\$97,490,901
ENB	5,132,961	\$244,313,820
TCK.B	4,765,741	\$37,452,449
AC	4,487,135	\$32,511,239
PSK	4,395,473	\$96,683,421
TBE	4,176,780	\$479,713

### Top 20 TSX Symbols by Value

Symbol	TSX Volume	TSX Value
BIN	6,545,250	\$264,471,591
SU	7,506,390	\$249,387,277
ENB	5,132,961	\$244,313,820
RY	3,048,928	\$209,956,748
TD	3,626,335	\$189,824,191
VRX	1,439,483	\$139,394,443
BNS	2,427,519	\$132,117,050
CP	802,302	\$132,023,320
CM	1,462,184	\$131,155,246
ABX	6,965,388	\$130,277,529
CNQ	3,956,620	\$111,186,919
G	5,757,806	\$110,541,423
PPL	3,194,479	\$107,856,642
BCE	1,839,143	\$107,411,320
CNR	1,328,835	\$104,633,780
BMO	1,395,141	\$103,942,739
FNV	1,265,332	\$102,366,370
MFC	5,405,849	\$97,490,901
PSK	4,395,473	\$96,683,421
MG	1,783,587	\$93,341,750

### ETF Trading

Daily Volume	29,399,764	Average Trade Value	\$8,723
Daily Value	\$367,301,061	Average Trade Size	698
# Trades	42,108	# of ETFs Traded	392

### Top 10 ETFs by TSX Volume

Symbol	Market Volume	Market Value
HOU	8,767,081	\$27,188,864
XIU	3,152,794	\$59,992,503
HNU	2,872,783	\$20,132,613
HOD	2,115,507	\$49,122,558
HGD	1,507,405	\$8,010,309
XEG	1,378,097	\$13,378,960
XGD	786,597	\$8,914,078
XSP	572,137	\$12,800,528
HVI	506,544	\$3,604,445
HXD	467,947	\$5,062,140

### Top 10 ETFs by TSX Value

Symbol	Market Volume	Market Value
XIU	3,152,794	\$59,992,503
HOD	2,115,507	\$49,122,558
HOU	8,767,081	\$27,188,864
HNU	2,872,783	\$20,132,613
HVU	371,888	\$16,381,654
HGU	445,263	\$13,592,611
HND	442,136	\$13,467,502
XEG	1,378,097	\$13,378,960
XSP	572,137	\$12,800,528
HSU	386,727	\$10,683,497

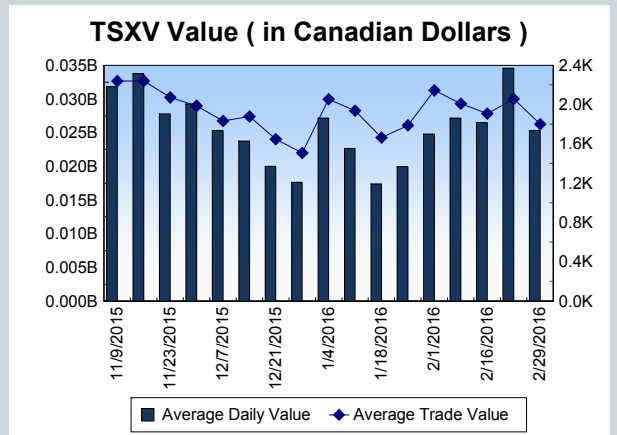
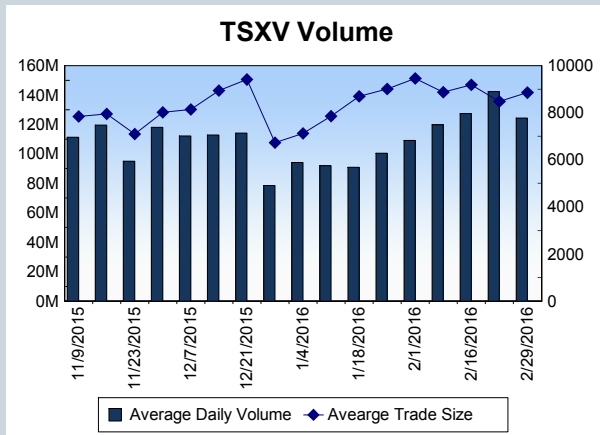
<b>Block Trades</b>	<b>Non Block Trades</b>
1,649	998,475

Top 5 Block Trade Brokers by Volume	
Broker	TSX Block Volume
CIBC WORLD MARKETS INC.	28,584,300
NATIONAL BANK FINANCIAL	22,456,500
RBC CAPITAL MARKETS	20,186,100
MORGAN STANLEY CANADA	13,434,100
TD SECURITIES INC.	8,065,600

Top 5 Block Trade Symbols by Volume	
Symbol	TSX Block Volume
MEG	7,172,400
PGF	5,281,100
BIN	4,276,400
COS	4,022,400
SU	2,421,400

TSXV	
Daily Volume	124,406,490
Daily Value	\$25,316,417
Daily Trades	14,053
Daily Symbols Traded	972

TSXV ANONYMOUS TRADING	
Daily Volume	52,207,269
Daily Value	\$10,785,008
Average Trade Size	9,485
% TSXV Volume	41.97%



Top 20 TSXV Symbols by Volume		
Symbol	TSXV Volume	TSXV Value
MTO	4,456,322	\$289,611
PTU	3,287,290	\$311,748
CZX	2,383,500	\$239,933
PHM	2,376,854	\$877,027
CSV	2,358,451	\$24,775
NOT	2,191,989	\$835,012
WKG	2,086,000	\$73,030
PMI	2,041,080	\$153,081
CRS	1,648,850	\$74,050
SPC	1,640,000	\$43,720
UBR	1,502,525	\$156,528
TEN	1,457,000	\$141,530
YTY	1,419,623	\$125,971
CXV	1,411,151	\$324,271
WPQ	1,271,000	\$60,100
BMK	1,250,000	\$10,780
TCX	1,245,800	\$18,687
GLW	1,236,700	\$59,700
GOM	1,161,700	\$146,233
GSI	1,138,550	\$137,091

Top 20 TSXV Symbols by Value		
Symbol	TSXV Volume	TSXV Value
NYX.DB	13,640	\$1,231,188
LXE	1,013,000	\$1,025,362
PHM	2,376,854	\$877,027
CGC	292,716	\$859,448
NOT	2,191,989	\$835,012
SYZ	97,870	\$829,916
NXE	739,939	\$707,643
GSV	449,456	\$547,286
KAM	356,608	\$439,200
NYX	134,691	\$402,096
XAU	75,975	\$367,674
FF	892,442	\$344,331
ICG	867,087	\$340,774
CXV	1,411,151	\$324,271
PTU	3,287,290	\$311,748
BGM	535,896	\$311,119
MTO	4,456,322	\$289,611
PE	461,733	\$281,141
TGM	726,500	\$276,026
MPH	36,263	\$259,615

Dark TSX/TSXV Trading			
Volume	8,840,040	Daily Trades	26,239
Value	178,299,422	Daily Symbols Traded	990