



March 4, 2016

For more information, email trading_sales@tsx.com
 Visit our blog at <http://exchange.tmx.com/>

Indices	March 4 Close	Previous Close	Change	% Change
S&P/TSX Composite Index	13,212.50	13,123.65	88.85	0.68 %
S&P/TSX 60 Index	772.63	768.14	4.49	0.58 %
S&P/TSX Venture Composite	562.39	552.90	9.48	1.72 %
S&P/TSX Completion Index	852.85	844.61	8.24	0.98 %
S&P/TSX Smallcap Index	516.49	512.69	3.80	0.74 %

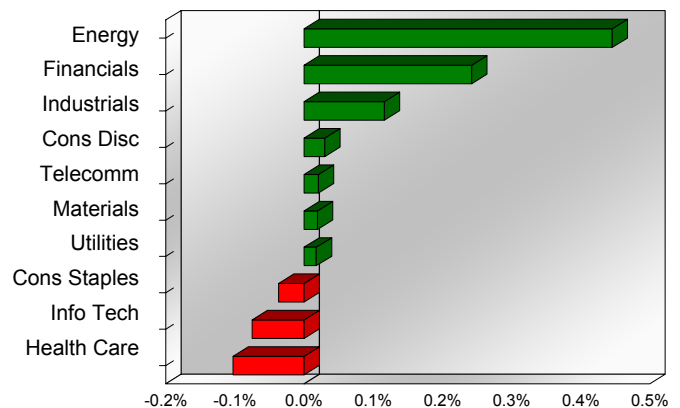
S&P/TSX Composite Index		
Advancers	Decliners	Unchanged
151	85	3

S&P/TSX Composite Index			
Top 10 Index Contributors		Top 10 Index Detractors	
Constituent	Index Contribution	Constituent	Index Contribution
CNQ	13.48	VRX	-13.43
ENB	10.91	ATD.B	-5.76
BNS	8.41	CSU	-4.19
CNR	8.00	AGU	-3.47
RY	7.43	ABX	-3.33
BAM.A	5.08	GIB.A	-2.96
ECA	4.77	POT	-2.79
SU	4.27	FNV	-1.36
CP	3.99	K	-1.28
CCL.B	3.20	OTC	-1.22

S&P/TSX Composite Index			
Top 10 Advancers		Top 10 Decliners	
Constituent	Return	Constituent	Return
TDG	14.12%	TXG	-7.43%
PD	12.93%	IMG	-6.98%
ATH	11.82%	FRU	-6.26%
ECA	10.77%	VRX	-6.06%
PGF	10.53%	SMF	-5.48%
ESI	9.88%	CSU	-5.06%
BTE	9.52%	DSG	-4.48%
LIF	8.30%	AVO	-4.04%
HBM	8.02%	SJ	-3.79%
MRE	7.77%	KXS	-3.55%

S&P/TSX Composite Index				
Sector	# of Index Constituents	Weight	Market Cap (\$B)	Index Contribution
Energy	54	18.83 %	\$318.48	58.51
Financials	46	37.14 %	\$617.59	31.80
Industrials	23	8.10 %	\$135.66	15.26
Consumer Discretionary	26	6.64 %	\$110.25	3.93
Telecommunication Services	4	5.65 %	\$93.72	2.70
Materials	46	11.39 %	\$188.44	2.52
Utilities	12	2.37 %	\$39.49	2.32
Consumer Staples	10	4.70 %	\$77.01	-4.83
Information Technology	13	3.12 %	\$50.30	-9.85
Health Care	5	2.05 %	\$32.18	-13.52
S&P/TSX Composite Index	239	100.00 %	\$1,663.13	88.85

S&P/TSX Composite Index - Sectors Returns



This report is published by TSX Inc. TSX Inc. does not guarantee either the completeness or the accuracy of this information. The information contained in this report is provided for informational purposes only and you agree not to rely upon the information contained in this report for any trading, business or financial purpose. These sheets are printed in Canada and issued by TSX Inc. under the express condition, to which everyone receiving or making use thereof assents, that no liability shall be incurred by TSX Inc. or its affiliated companies or any other vendor or donor, including, without limitation, for reliance on or for any errors or inaccuracies in this report. Neither TMX Group Limited, TSX Inc., nor any of their affiliated companies, guarantees the completeness of the information contained in this document and are not responsible for any errors or omission in or your use of, or reliance on, the information. This publication is under copyright. © 2015 TSX Inc. All rights reserved. Do not copy, distribute, sell or modify this publication without the prior written consent of TSX Inc. www.tmx.com/trading

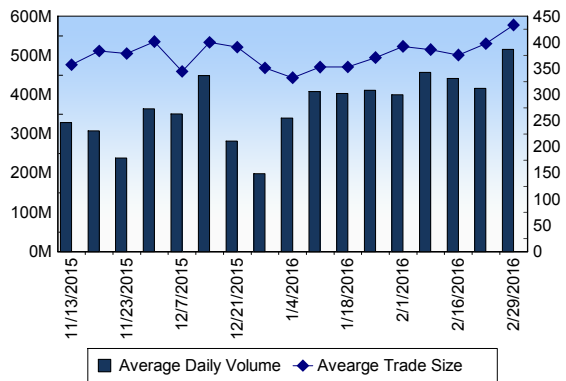
TSX

Daily Volume	665,231,564
Daily Value	\$7,067,328,004
Daily Trades	1,418,497
Daily Symbols Traded	1,898

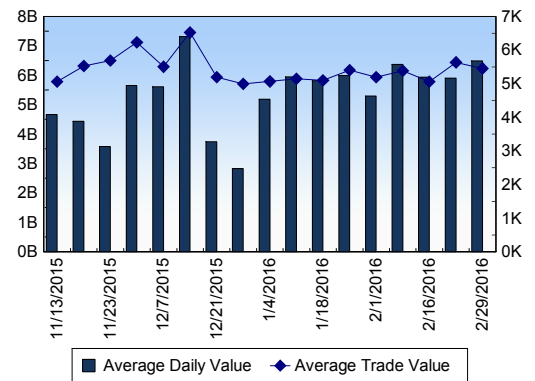
TSX ANONYMOUS TRADING

Daily Volume	230,587,589
Daily Value	\$2,648,709,275
Average Trade Size	396
% TSX Volume	34.66 %

TSX Volume



TSX Value (in Canadian Dollars)



Top 20 TSX Symbols by Volume

Symbol	TSX Volume	TSX Value
ECA	23,858,293	\$171,171,924
FM	21,950,346	\$160,165,263
BTO	20,897,685	\$35,399,245
GEN	17,762,934	\$1,309,491
BTE	15,604,100	\$75,690,669
K	14,879,253	\$61,879,827
LUN	12,308,804	\$52,752,024
RMP	11,627,236	\$16,499,232
HOU	11,351,836	\$39,209,735
YRI	10,566,557	\$44,696,927
TCK.B	10,161,059	\$106,166,446
G	9,799,493	\$205,445,211
BBD.B	8,598,022	\$11,007,555
TBE	8,419,900	\$1,003,814
CNQ	8,072,493	\$275,421,511
ABX	8,045,927	\$153,917,659
LYD	7,957,400	\$2,219,566
LSG	7,368,323	\$13,808,057
ELD	6,392,470	\$29,466,938
PRE	6,313,754	\$7,929,189

Top 20 TSX Symbols by Value

Symbol	TSX Volume	TSX Value
CNQ	8,072,493	\$275,421,511
RY	2,916,338	\$207,722,482
G	9,799,493	\$205,445,211
TD	3,504,732	\$187,871,372
BNS	3,016,950	\$178,411,506
ECA	23,858,293	\$171,171,924
FM	21,950,346	\$160,165,263
ABX	8,045,927	\$153,917,659
ENB	2,805,833	\$136,002,941
FNV	1,540,718	\$121,135,198
SU	3,294,338	\$111,105,514
TCK.B	10,161,059	\$106,166,446
BCE	1,715,883	\$98,423,026
CM	1,026,774	\$95,125,880
AEM	1,708,532	\$80,225,515
MFC	4,336,101	\$79,932,569
BMO	1,019,163	\$77,665,919
SLW	3,352,530	\$76,258,002
CPG	4,149,545	\$75,817,679
BTE	15,604,100	\$75,690,669

ETF Trading

Daily Volume	44,160,971	Average Trade Value	\$9,994
Daily Value	\$540,886,576	Average Trade Size	816
# Trades	54,119	# of ETFs Traded	397

Top 10 ETFs by TSX Volume

Symbol	Market Volume	Market Value
HOU	11,351,836	\$39,209,735
HGD	5,077,683	\$24,530,442
XIU	3,132,242	\$61,178,653
XEG	2,722,790	\$29,178,180
HOD	2,445,017	\$50,449,532
XGD	2,438,665	\$28,811,854
HNU	1,771,864	\$11,529,071
HGU	1,181,346	\$38,985,989
HXD	979,333	\$10,044,649
CGL	865,610	\$9,756,698

Top 10 ETFs by TSX Value

Symbol	Market Volume	Market Value
XIU	3,132,242	\$61,178,653
HOD	2,445,017	\$50,449,532
HOU	11,351,836	\$39,209,735
HGU	1,181,346	\$38,985,989
XEG	2,722,790	\$29,178,180
XGD	2,438,665	\$28,811,854
HGD	5,077,683	\$24,530,442
XSP	746,042	\$17,129,905
HSU	519,352	\$15,060,045
HVU	408,141	\$13,880,969

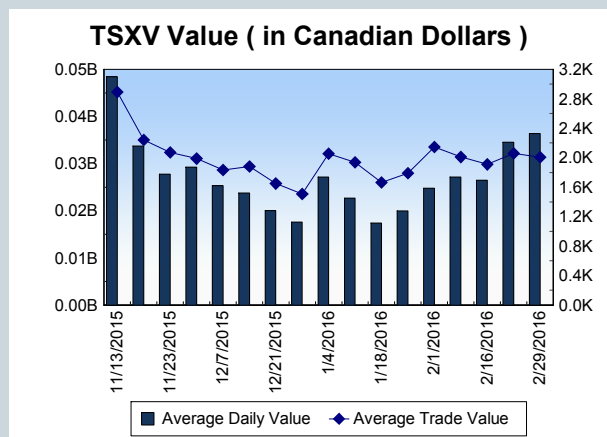
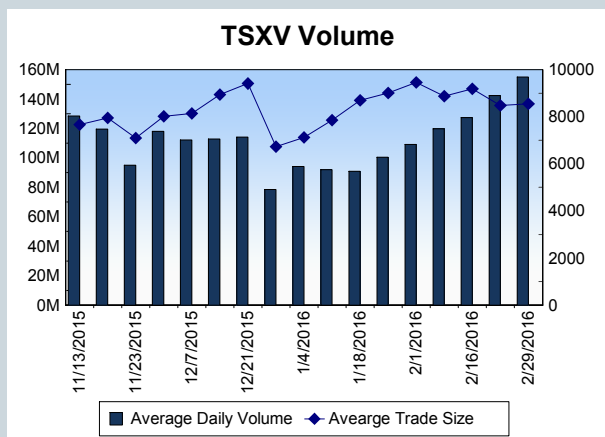
Block Trades	Non Block Trades
1,216	1,417,281

Top 5 Block Trade Brokers by Volume	
Broker	TSX Block Volume
TD SECURITIES INC.	18,087,000
CIBC WORLD MARKETS INC.	8,980,100
CANACCORD GENUITY CORI	6,856,000
CORMARK SECURITIES INC.	6,582,200
NATIONAL BANK FINANCIAL	5,895,600

Top 5 Block Trade Symbols by Volume	
Symbol	TSX Block Volume
ECA	6,282,900
BTO	5,314,800
K	4,224,500
RMP	2,556,100
FM	2,550,300

TSXV	
Daily Volume	213,513,838
Daily Value	\$52,870,022
Daily Trades	24,823
Daily Symbols Traded	1,068

TSXV ANONYMOUS TRADING	
Daily Volume	81,579,774
Daily Value	\$19,006,538
Average Trade Size	9,672
% TSXV Volume	38.21%



Top 20 TSXV Symbols by Volume		
Symbol	TSXV Volume	TSXV Value
TGM	20,400,816	\$10,148,069
PHM	5,728,155	\$2,559,595
EDE	5,462,020	\$27,310
NXE	3,505,751	\$4,352,240
ABR	3,366,200	\$69,109
LGN	2,896,000	\$58,615
KEK	2,608,113	\$861,050
SUL	2,503,000	\$25,700
GPH	2,431,800	\$207,644
CCB	2,192,445	\$792,424
CXV	1,981,773	\$441,131
ITM	1,873,000	\$37,460
ICG	1,836,420	\$785,582
FO	1,829,615	\$166,115
NX	1,810,500	\$117,470
MTO	1,788,540	\$132,522
TYE	1,655,966	\$31,509
MEK	1,649,072	\$187,847
CGP	1,614,800	\$54,626
CSQ	1,585,190	\$94,188

Top 20 TSXV Symbols by Value		
Symbol	TSXV Volume	TSXV Value
TGM	20,400,816	\$10,148,069
NXE	3,505,751	\$4,352,240
PHM	5,728,155	\$2,559,595
GSV	909,684	\$1,299,581
LIX	928,850	\$1,069,852
XAU	191,972	\$908,160
KEK	2,608,113	\$861,050
CCB	2,192,445	\$792,424
ICG	1,836,420	\$785,582
CGC	264,027	\$780,267
KDI	239,200	\$717,362
RMC	146,228	\$671,667
LXE	539,510	\$653,939
TWM	450,500	\$651,791
RUF.UN	91,078	\$633,149
PE	816,332	\$620,628
KAM	485,894	\$618,382
FF	1,452,725	\$582,945
NMX	1,227,745	\$581,171
ROG	589,370	\$500,039

Dark TSX/TSXV Trading			
Volume	17,571,060	Daily Trades	46,520
Value	274,773,597	Daily Symbols Traded	1,049