



March 11, 2016

For more information, email [trading\\_sales@tsx.com](mailto:trading_sales@tsx.com)  
 Visit our blog at <http://exchange.tmx.com/>

Indices	March 11 Close	Previous Close	Change	% Change
S&P/TSX Composite Index	13,522.00	13,379.14	142.86	1.07 %
S&P/TSX 60 Index	794.08	784.84	9.24	1.18 %
S&P/TSX Venture Composite	576.31	574.52	1.79	0.31 %
S&P/TSX Completion Index	860.87	854.80	6.08	0.71 %
S&P/TSX Smallcap Index	523.47	522.27	1.20	0.23 %

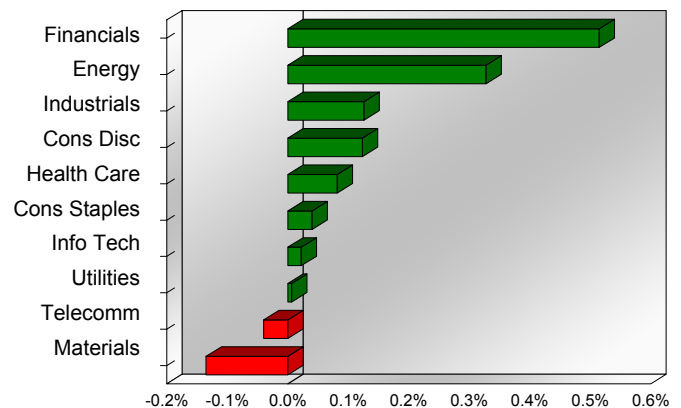
S&P/TSX Composite Index		
Advancers	Decliners	Unchanged
170	64	5

S&P/TSX Composite Index			
Top 10 Index Contributors		Top 10 Index Detractors	
Constituent	Index Contribution	Constituent	Index Contribution
RY	11.92	BCE	-7.69
MFC	10.02	ABX	-4.35
VRX	9.71	G	-2.51
TD	7.95	AEM	-2.13
CNQ	7.65	ELD	-2.11
CP	7.61	SLW	-1.35
CNR	7.43	POT	-1.33
BAM.A	7.00	LUN	-1.14
BNS	6.79	K	-1.09
SLF	4.90	BTO	-1.03

S&P/TSX Composite Index			
Top 10 Advancers		Top 10 Decliners	
Constituent	Return	Constituent	Return
PSG	13.77%	ELD	-7.64%
MEG	12.74%	BTO	-7.41%
PD	7.25%	NG	-5.98%
CFP	6.77%	SMF	-5.81%
CR	6.62%	LUN	-5.24%
X	5.99%	PVG	-5.06%
CXR	5.61%	P	-5.06%
KEL	5.43%	AGI	-4.32%
NFI	5.16%	IMG	-4.28%
BTE	5.04%	TXG	-4.00%

S&P/TSX Composite Index				
Sector	# of Index Constituents	Weight	Market Cap (\$B)	Index Contribution
Financials	46	37.28 %	\$636.44	68.87
Energy	54	18.93 %	\$324.27	43.88
Industrials	23	8.07 %	\$138.04	16.88
Consumer Discretionary	26	6.56 %	\$112.59	16.48
Health Care	5	2.05 %	\$35.98	10.96
Consumer Staples	10	4.58 %	\$77.76	5.37
Information Technology	13	2.96 %	\$50.21	2.95
Utilities	12	2.38 %	\$40.18	0.89
Telecommunication Services	4	5.69 %	\$95.12	-5.35
Materials	46	11.51 %	\$191.50	-18.06
<b>S&amp;P/TSX Composite Index</b>	<b>239</b>	<b>100.00 %</b>	<b>\$1,702.08</b>	<b>142.86</b>

S&P/TSX Composite Index - Sectors Returns



This report is published by TSX Inc. TSX Inc. does not guarantee either the completeness or the accuracy of this information. The information contained in this report is provided for informational purposes only and you agree not to rely upon the information contained in this report for any trading, business or financial purpose. These sheets are printed in Canada and issued by TSX Inc. under the express condition, to which everyone receiving or making use thereof assents, that no liability shall be incurred by TSX Inc. or its affiliated companies or any other vendor or donor, including, without limitation, for reliance on or for any errors or inaccuracies in this report. Neither TMX Group Limited, TSX Inc., nor any of their affiliated companies, guarantees the completeness of the information contained in this document and are not responsible for any errors or omission in or your use of, or reliance on, the information. This publication is under copyright. © 2015 TSX Inc. All rights reserved. Do not copy, distribute, sell or modify this publication without the prior written consent of TSX Inc. [www.tmx.com/trading](http://www.tmx.com/trading)

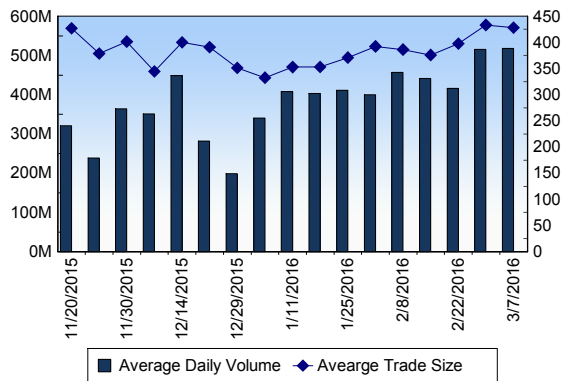
## TSX

Daily Volume	447,999,031
Daily Value	\$5,626,379,653
Daily Trades	1,042,607
Daily Symbols Traded	1,869

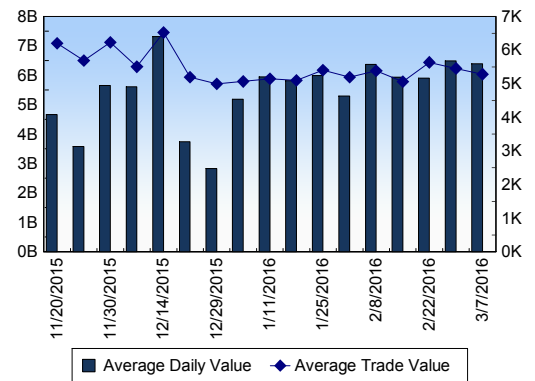
## TSX ANONYMOUS TRADING

Daily Volume	154,279,789
Daily Value	\$2,197,182,030
Average Trade Size	351
% TSX Volume	34.44 %

### TSX Volume



### TSX Value ( in Canadian Dollars )



### Top 20 TSX Symbols by Volume

Symbol	TSX Volume	TSX Value
DGI	22,229,222	\$462,229
NKO	14,736,130	\$3,963,673
BTE	10,356,790	\$52,204,498
HOU	10,117,722	\$40,151,941
FM	9,470,532	\$69,662,510
ECA	8,080,459	\$60,494,726
RMX	7,816,759	\$959,376
ABX	5,593,902	\$103,943,568
LSG	5,459,785	\$10,675,743
BTO	5,412,660	\$9,828,917
YRI	5,342,057	\$22,455,471
K	5,313,858	\$21,148,713
TCK.B	5,046,441	\$50,842,276
ELD	4,834,081	\$21,950,902
GEN	4,660,688	\$593,746
LUN	4,502,677	\$19,059,791
CNQ	4,450,392	\$160,502,639
CPG	4,078,635	\$74,200,016
SU	4,007,586	\$138,720,373
G	3,869,010	\$84,576,194

### Top 20 TSX Symbols by Value

Symbol	TSX Volume	TSX Value
RY	3,073,814	\$227,273,167
CNQ	4,450,392	\$160,502,639
TD	2,892,204	\$159,045,575
SU	4,007,586	\$138,720,373
BNS	2,141,099	\$132,958,633
CM	1,243,292	\$120,470,095
ENB	2,337,531	\$118,978,332
BCE	2,016,034	\$116,617,581
ABX	5,593,902	\$103,943,568
BMO	1,270,766	\$99,337,155
TRP	2,066,932	\$98,363,932
FNV	1,065,130	\$86,845,797
G	3,869,010	\$84,576,194
NA	1,883,828	\$77,808,106
CPG	4,078,635	\$74,200,016
CNR	879,660	\$70,227,544
FM	9,470,532	\$69,662,510
XIU	3,352,925	\$67,176,448
MFC	3,394,997	\$63,308,129
ECA	8,080,459	\$60,494,726

### ETF Trading

Daily Volume	38,646,706	Average Trade Value	\$10,263
Daily Value	\$495,606,498	Average Trade Size	800
# Trades	48,291	# of ETFs Traded	397

### Top 10 ETFs by TSX Volume

Symbol	Market Volume	Market Value
HOU	10,117,722	\$40,151,941
XEG	3,506,792	\$38,752,950
XIU	3,352,925	\$67,176,448
HGD	2,451,274	\$11,935,405
HOD	2,216,347	\$38,734,137
HNU	1,729,742	\$13,456,925
XGD	1,465,732	\$17,118,984
HGU	759,439	\$24,581,051
HXD	750,332	\$7,330,494
HVI	572,996	\$4,599,127

### Top 10 ETFs by TSX Value

Symbol	Market Volume	Market Value
XIU	3,352,925	\$67,176,448
HOU	10,117,722	\$40,151,941
XEG	3,506,792	\$38,752,950
HOD	2,216,347	\$38,734,137
HGU	759,439	\$24,581,051
HVU	562,485	\$18,502,305
XGD	1,465,732	\$17,118,984
HNU	1,729,742	\$13,456,925
HXU	552,646	\$13,366,379
XSP	548,850	\$12,713,857

**Block Trades**

877

**Non Block Trades**

1,041,730

**Top 5 Block Trade Brokers by Volume**

Broker	TSX Block Volume
TD SECURITIES INC.	9,641,100
CIBC WORLD MARKETS INC.	5,894,000
NATIONAL BANK FINANCIAL	3,712,700
CANACCORD GENUITY CORP	3,653,700
CORMARK SECURITIES INC.	2,920,100

**Top 5 Block Trade Symbols by Volume**

Symbol	TSX Block Volume
HOU	1,937,300
PGF	1,483,000
LSG	1,450,000
WEF	1,166,000
BTE	1,140,000

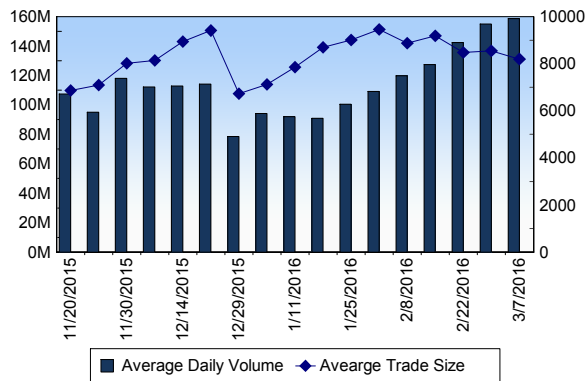
**TSXV**

Daily Volume	134,763,481
Daily Value	\$34,906,165
Daily Trades	16,864
Daily Symbols Traded	1,015

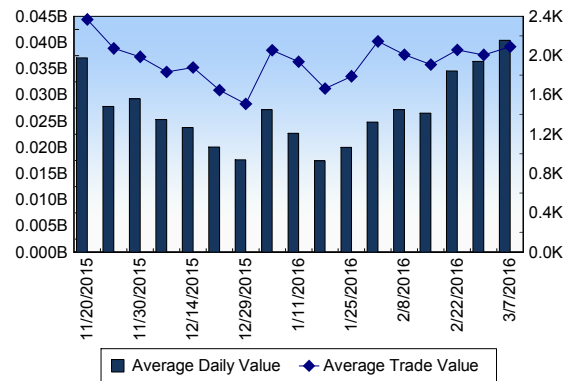
**TSXV ANONYMOUS TRADING**

Daily Volume	47,912,736
Daily Value	\$12,369,044
Average Trade Size	8,203
% TSXV Volume	35.55%

**TSXV Volume**



**TSXV Value ( in Canadian Dollars )**



**Top 20 TSXV Symbols by Volume**

Symbol	TSXV Volume	TSXV Value
MOM	3,204,402	\$57,563
PHM	2,958,248	\$1,198,977
ARC	2,701,000	\$27,150
NMX	2,610,644	\$1,608,962
SLG	2,467,021	\$55,632
ORX	2,223,000	\$44,730
YFI	1,823,416	\$484,278
CXV	1,769,309	\$441,668
EBY	1,715,000	\$17,150
UBR	1,615,172	\$278,622
EGT	1,425,824	\$188,019
XOP	1,351,420	\$101,440
LIX	1,306,952	\$1,359,467
GPH	1,202,743	\$133,670
EDE	1,161,318	\$5,807
NXE	1,133,712	\$1,587,795
IML	1,114,345	\$57,204
ICG	1,068,884	\$480,017
EXX	1,061,542	\$45,554
MTO	1,045,985	\$73,530

**Top 20 TSXV Symbols by Value**

Symbol	TSXV Volume	TSXV Value
SRX	526,831	\$1,791,888
NMX	2,610,644	\$1,608,962
NXE	1,133,712	\$1,587,795
CGC	559,955	\$1,573,991
LIX	1,306,952	\$1,359,467
PHM	2,958,248	\$1,198,977
KAM	577,054	\$824,412
ROG	921,339	\$805,891
RUF.UN	99,552	\$693,436
TWM	394,000	\$593,138
NYX	181,032	\$577,305
YFI	1,823,416	\$484,278
ICG	1,068,884	\$480,017
RMC	75,711	\$471,106
TGM	972,020	\$447,590
CXV	1,769,309	\$441,668
IKM	722,950	\$438,898
LXE	327,930	\$425,861
FF	997,786	\$397,368
BRI	531,024	\$373,815

**Dark TSX/TSXV Trading**

Volume	12,160,180	Daily Trades	32,971
Value	222,641,964	Daily Symbols Traded	1,046