



April 1, 2016

For more information, email trading_sales@tsx.com
 Visit our blog at <http://exchange.tmx.com/>

Indices	April 1 Close	Previous Close	Change	% Change
S&P/TSX Composite Index	13,440.44	13,494.36	-53.92	-0.40 %
S&P/TSX 60 Index	787.45	790.93	-3.48	-0.44 %
S&P/TSX Venture Composite	581.41	581.08	0.33	0.06 %
S&P/TSX Completion Index	862.24	864.55	-2.31	-0.27 %
S&P/TSX Smallcap Index	526.04	525.21	0.83	0.16 %

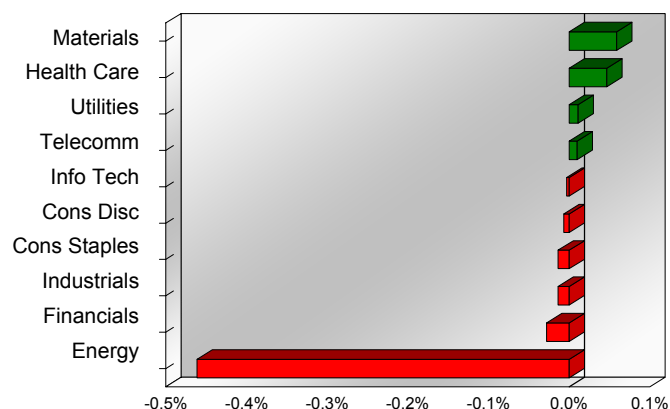
S&P/TSX Composite Index		
Advancers	Decliners	Unchanged
106	121	8

S&P/TSX Composite Index			
Top 10 Index Contributors		Top 10 Index Detractors	
Constituent	Index Contribution	Constituent	Index Contribution
VRX	5.74	CNQ	-13.27
RY	3.18	ENB	-9.08
CSU	1.95	TRP	-8.18
CM	1.69	BNS	-7.15
BCE	1.51	MG	-4.03
ABX	1.29	ARX	-3.34
QSR	1.25	CPG	-3.21
GIL	1.21	BB	-2.91
K	0.97	PPL	-2.43
AEM	0.97	TOU	-2.21

S&P/TSX Composite Index			
Top 10 Advancers		Top 10 Decliners	
Constituent	Return	Constituent	Return
VRX	7.34%	BIR	-8.70%
ASR	5.53%	BB	-7.59%
DOO	5.51%	ARX	-6.41%
AGI	5.38%	KEL	-6.31%
PLI	4.87%	GTE	-6.17%
BBD.B	4.55%	PEY	-5.88%
NSU	4.29%	AIM	-5.80%
CJR.B	4.08%	TOU	-5.45%
SMF	3.67%	AAV	-5.19%
TRQ	3.31%	MEG	-4.89%

S&P/TSX Composite Index				
Sector	# of Index Constituents	Weight	Market Cap (\$B)	Index Contribution
Materials	45	11.00 %	\$188.41	7.95
Health Care	5	0.94 %	\$16.73	6.28
Utilities	13	2.47 %	\$42.26	1.51
Telecommunication Services	4	5.73 %	\$97.69	1.37
Information Technology	13	3.09 %	\$52.54	-0.40
Consumer Discretionary	25	6.76 %	\$114.99	-0.90
Consumer Staples	11	4.68 %	\$79.42	-1.83
Industrials	23	8.20 %	\$139.42	-1.86
Financials	46	37.86 %	\$644.37	-3.79
Energy	50	19.27 %	\$320.40	-62.27
S&P/TSX Composite Index	235	100.00 %	\$1,696.23	-53.92

S&P/TSX Composite Index - Sectors Returns



This report is published by TSX Inc. TSX Inc. does not guarantee either the completeness or the accuracy of this information. The information contained in this report is provided for informational purposes only and you agree not to rely upon the information contained in this report for any trading, business or financial purpose. These sheets are printed in Canada and issued by TSX Inc. under the express condition, to which everyone receiving or making use thereof assents, that no liability shall be incurred by TSX Inc. or its affiliated companies or any other vendor or donor, including, without limitation, for reliance on or for any errors or inaccuracies in this report. Neither TMX Group Limited, TSX Inc., nor any of their affiliated companies, guarantees the completeness of the information contained in this document and are not responsible for any errors or omission in or your use of, or reliance on, the information. This publication is under copyright. © 2015 TSX Inc. All rights reserved. Do not copy, distribute, sell or modify this publication without the prior written consent of TSX Inc. www.tmx.com/trading

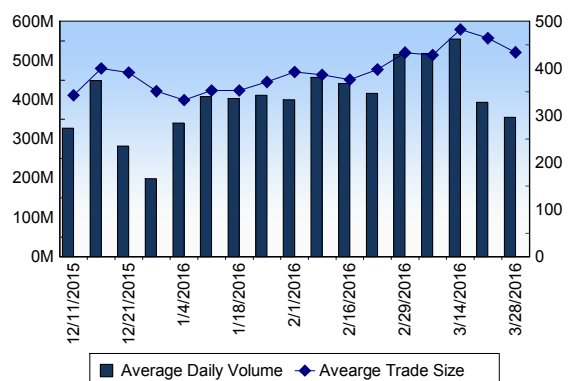
TSX

Daily Volume	412,012,334
Daily Value	\$5,178,557,403
Daily Trades	880,273
Daily Symbols Traded	1,825

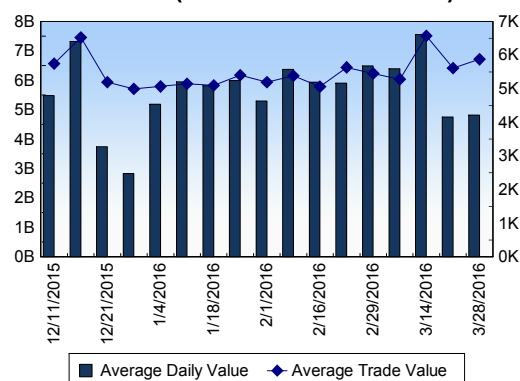
TSX ANONYMOUS TRADING

Daily Volume	143,486,142
Daily Value	\$2,011,028,010
Average Trade Size	380
% TSX Volume	34.83 %

TSX Volume



TSX Value (in Canadian Dollars)



Top 20 TSX Symbols by Volume

Symbol	TSX Volume	TSX Value
LSG	29,556,513	\$56,396,175
PRE	18,919,764	\$23,806,482
BBD.B	13,467,220	\$18,456,118
HOU	11,558,606	\$38,262,239
GEN	11,002,619	\$2,269,468
TST	8,038,285	\$641,821
TCK.B	6,039,857	\$59,956,218
K	5,721,500	\$24,940,883
YRI	5,230,132	\$20,566,345
ECA	5,177,363	\$40,418,001
BTE	4,768,392	\$24,092,984
PGF	4,609,936	\$7,487,709
TRP.R	4,346,213	\$212,429,715
ABX	4,331,402	\$76,005,807
TRP	4,291,531	\$213,155,435
BB	4,158,564	\$40,768,990
WEF	3,946,999	\$9,303,136
FM	3,721,104	\$25,135,547
CNQ	3,535,886	\$119,211,295
BTO	3,529,536	\$7,531,128

Top 20 TSX Symbols by Value

Symbol	TSX Volume	TSX Value
TRP	4,291,531	\$213,155,435
TRP.R	4,346,213	\$212,429,715
RY	2,683,309	\$200,639,134
CNQ	3,535,886	\$119,211,295
BNS	1,798,179	\$112,262,021
TD	1,949,461	\$109,146,002
BMO	1,219,430	\$96,063,595
SU	2,583,435	\$92,499,062
CNR	1,145,950	\$92,464,801
CM	858,458	\$83,415,639
ABX	4,331,402	\$76,005,807
FNV	958,585	\$75,440,112
ENB	1,366,717	\$67,693,055
G	3,085,498	\$63,422,961
CP	357,652	\$61,073,264
TCK.B	6,039,857	\$59,956,218
POT	2,634,816	\$57,898,677
LSG	29,556,513	\$56,396,175
BCE	930,742	\$55,054,648
VRX	1,364,198	\$50,013,801

ETF Trading

Daily Volume	34,387,808	Average Trade Value	\$9,338
Daily Value	\$412,961,056	Average Trade Size	778
# Trades	44,223	# of ETFs Traded	407

Top 10 ETFs by TSX Volume

Symbol	Market Volume	Market Value
HOU	11,558,606	\$38,262,239
XIU	2,247,959	\$44,368,012
HGD	2,228,793	\$11,196,042
XEG	2,074,011	\$22,153,563
XGD	1,692,786	\$19,108,747
HNU	1,456,547	\$11,467,254
HOD	1,455,796	\$29,254,975
HVU	819,809	\$18,279,263
HGU	765,737	\$22,787,746
ZEB	632,336	\$14,081,494

Top 10 ETFs by TSX Value

Symbol	Market Volume	Market Value
XIU	2,247,959	\$44,368,012
HOU	11,558,606	\$38,262,239
HOD	1,455,796	\$29,254,975
HGU	765,737	\$22,787,746
XEG	2,074,011	\$22,153,563
XGD	1,692,786	\$19,108,747
HVU	819,809	\$18,279,263
ZEB	632,336	\$14,081,494
HNU	1,456,547	\$11,467,254
HSU	365,960	\$11,287,238

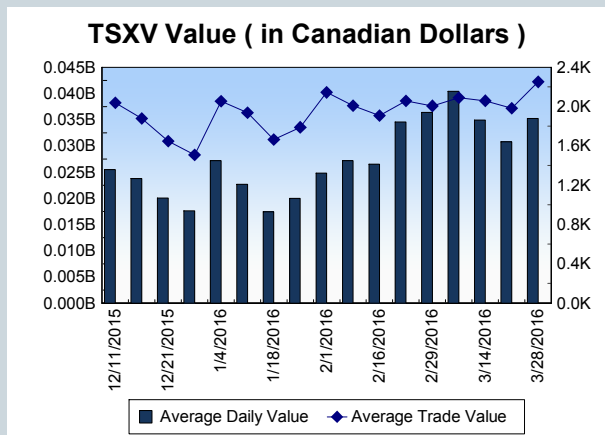
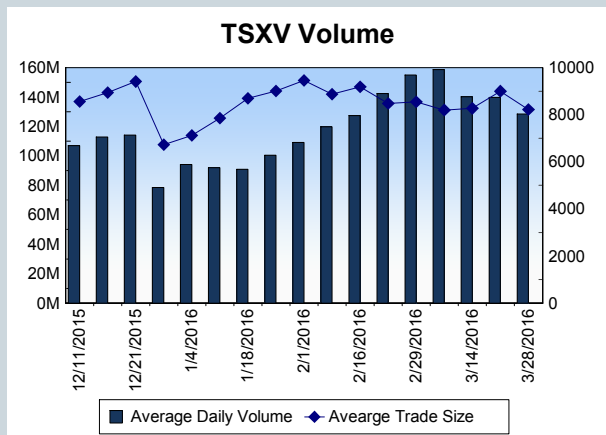
Block Trades	Non Block Trades
925	879,348

Top 5 Block Trade Brokers by Volume	
Broker	TSX Block Volume
MACQUARIE CAPITAL MARKI	17,160,600
TD SECURITIES INC.	8,351,500
RBC CAPITAL MARKETS	6,668,500
CIBC WORLD MARKETS INC.	6,029,200
SCOTIA CAPITAL INC.	4,867,500

Top 5 Block Trade Symbols by Volume	
Symbol	TSX Block Volume
LSG	19,581,800
HOU	1,718,900
WEF	1,600,800
SPE	1,243,700
GTE	1,148,300

TSXV	
Daily Volume	140,265,517
Daily Value	\$40,423,151
Daily Trades	16,215
Daily Symbols Traded	964

TSXV ANONYMOUS TRADING	
Daily Volume	51,486,077
Daily Value	\$13,724,386
Average Trade Size	8,463
% TSXV Volume	36.71%



Top 20 TSXV Symbols by Volume		
Symbol	TSXV Volume	TSXV Value
EQT	8,398,300	\$480,425
PHM	8,020,286	\$2,057,357
JAG	5,958,280	\$1,819,190
ADD	5,198,787	\$446,285
NXE	5,049,665	\$9,492,921
VID	4,785,350	\$185,701
SLG	2,764,800	\$41,467
STA	2,297,447	\$34,462
GBB	1,977,407	\$194,806
PRD	1,910,000	\$124,155
CUU	1,853,763	\$222,014
CRE	1,770,025	\$521,559
ICG	1,676,673	\$866,190
AIX	1,377,100	\$71,651
MTO	1,162,171	\$103,355
BXR	1,143,000	\$40,005
ROI	1,108,300	\$50,254
BEX	1,107,000	\$55,350
PHO	991,197	\$788,065
WZR	943,607	\$66,907

Top 20 TSXV Symbols by Value		
Symbol	TSXV Volume	TSXV Value
NXE	5,049,665	\$9,492,921
SRX	893,675	\$3,038,452
PHM	8,020,286	\$2,057,357
JAG	5,958,280	\$1,819,190
WED	486,345	\$1,267,733
ICG	1,676,673	\$866,190
PHO	991,197	\$788,065
RUF.UN	100,265	\$715,518
XAU	167,059	\$670,276
CGC	229,393	\$598,643
CRE	1,770,025	\$521,559
KAM	375,719	\$508,773
LIX	369,439	\$495,564
EQT	8,398,300	\$480,425
GSV	338,175	\$471,066
ADD	5,198,787	\$446,285
NMX	625,049	\$417,046
LXE	272,412	\$377,802
PE	513,575	\$358,948
TGM	676,385	\$325,385

Dark TSX/TSXV Trading			
Volume	10,914,350	Daily Trades	31,070
Value	200,111,365	Daily Symbols Traded	932