



April 25, 2016

For more information, email trading_sales@tsx.com
 Visit our blog at <http://exchange.tmx.com/>

Indices	April 25 Close	Previous Close	Change	% Change
S&P/TSX Composite Index	13,795.99	13,874.00	-78.01	-0.56 %
S&P/TSX 60 Index	807.82	812.27	-4.45	-0.55 %
S&P/TSX Venture Composite	651.91	656.18	-4.27	-0.65 %
S&P/TSX Completion Index	886.68	892.12	-5.44	-0.61 %
S&P/TSX Smallcap Index	564.71	569.76	-5.05	-0.89 %

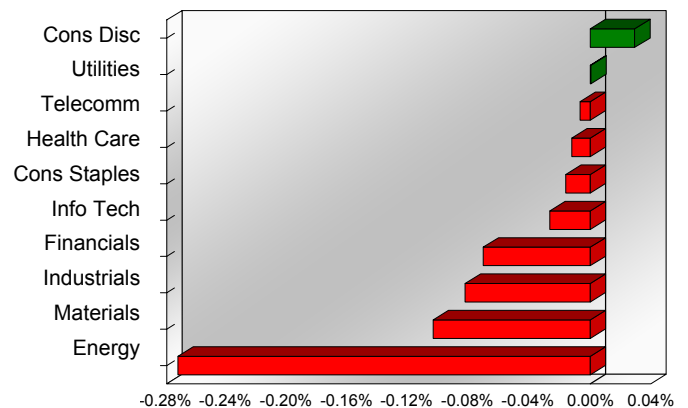
S&P/TSX Composite Index		
Advancers	Decliners	Unchanged
79	150	6

S&P/TSX Composite Index			
Top 10 Index Contributors		Top 10 Index Detractors	
Constituent	Index Contribution	Constituent	Index Contribution
BAM.A	2.96	TD	-7.62
BBD.B	1.38	CP	-6.41
MG	1.36	ENB	-5.78
MRU	1.19	CNQ	-4.42
IMO	1.13	CNR	-4.23
QSR	0.95	BNS	-3.43
REI.UN	0.94	RY	-3.41
GIL	0.86	ECA	-2.89
T	0.80	CPG	-2.72
HR.UN	0.75	FNV	-2.60

S&P/TSX Composite Index			
Top 10 Advancers		Top 10 Decliners	
Constituent	Return	Constituent	Return
BBD.B	5.26%	NSU	-10.21%
DHX.B	4.89%	MEG	-6.98%
AX.UN	2.82%	BTE	-6.06%
AAR.UN	1.81%	CEU	-6.02%
GRT.UN	1.74%	PD	-5.50%
WTE	1.61%	ERF	-5.20%
HR.UN	1.60%	ECA	-4.55%
DSG	1.56%	LIF	-4.41%
MRU	1.49%	PWT	-4.32%
NPI	1.43%	OGC	-4.15%

S&P/TSX Composite Index				
Sector	# of Index Constituents	Weight	Market Cap (\$B)	Index Contribution
Consumer Discretionary	25	6.45 %	\$113.48	4.08
Utilities	13	2.35 %	\$41.15	0.05
Telecommunication Services	4	5.37 %	\$93.92	-0.94
Health Care	5	1.12 %	\$19.48	-1.71
Consumer Staples	11	4.32 %	\$75.41	-2.26
Information Technology	13	2.94 %	\$51.00	-3.70
Financials	46	37.48 %	\$655.42	-9.82
Industrials	23	8.31 %	\$144.20	-11.48
Materials	45	11.76 %	\$204.28	-14.40
Energy	50	19.89 %	\$343.72	-37.82
S&P/TSX Composite Index	235	100.00 %	\$1,742.05	-78.01

S&P/TSX Composite Index - Sectors Returns



This report is published by TSX Inc. TSX Inc. does not guarantee either the completeness or the accuracy of this information. The information contained in this report is provided for informational purposes only and you agree not to rely upon the information contained in this report for any trading, business or financial purpose. These sheets are printed in Canada and issued by TSX Inc. under the express condition, to which everyone receiving or making use thereof assents, that no liability shall be incurred by TSX Inc. or its affiliated companies or any other vendor or donor, including, without limitation, for reliance on or for any errors or inaccuracies in this report. Neither TMX Group Limited, TSX Inc., nor any of their affiliated companies, guarantees the completeness of the information contained in this document and are not responsible for any errors or omission in or your use of, or reliance on, the information. This publication is under copyright. © 2015 TSX Inc. All rights reserved. Do not copy, distribute, sell or modify this publication without the prior written consent of TSX Inc. www.tmx.com/trading

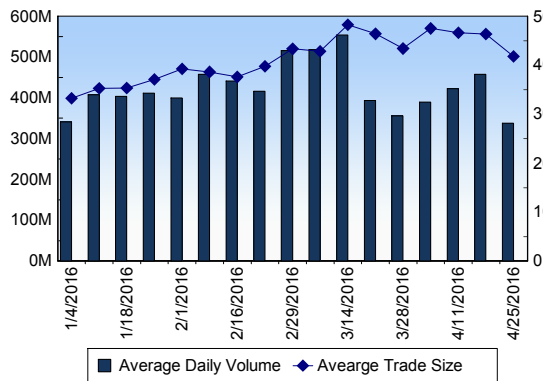
TSX

Daily Volume	338,017,602
Daily Value	\$4,216,058,839
Daily Trades	808,933
Daily Symbols Traded	1,884

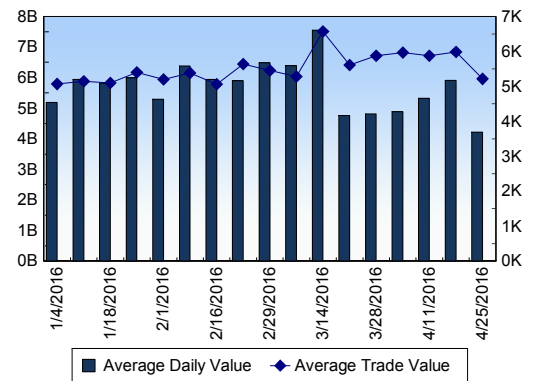
TSX ANONYMOUS TRADING

Daily Volume	117,177,115
Daily Value	\$1,680,552,228
Average Trade Size	333
% TSX Volume	34.67 %

TSX Volume



TSX Value (in Canadian Dollars)



Top 20 TSX Symbols by Volume

Symbol	TSX Volume	TSX Value
NKO	17,729,496	\$4,214,415
BTE	9,916,501	\$63,073,933
BBD.B	8,993,843	\$15,988,782
HOU	7,091,219	\$29,468,357
FM	5,912,662	\$50,716,464
K	5,823,471	\$34,129,297
ECA	5,592,578	\$51,295,151
TCK.B	5,537,126	\$72,425,023
YRI	3,742,023	\$20,078,254
LAC	3,543,907	\$2,680,771
PGF	3,465,579	\$6,234,568
TV	3,430,426	\$1,796,980
NSU	3,317,095	\$14,375,876
ELD	3,145,759	\$15,047,418
LUN	3,138,858	\$13,501,361
CS	3,060,820	\$2,209,035
CNQ	3,034,341	\$115,977,224
ABX	3,011,102	\$61,581,660
TBE	2,974,765	\$311,954
CVE	2,827,928	\$54,044,787

Top 20 TSX Symbols by Value

Symbol	TSX Volume	TSX Value
CNQ	3,034,341	\$115,977,224
RY	1,487,493	\$114,937,409
TD	1,912,056	\$106,470,431
CNR	1,237,771	\$102,175,435
ATD.B	1,541,351	\$82,950,235
SU	2,164,587	\$77,856,187
BMO	921,151	\$75,417,576
TCK.B	5,537,126	\$72,425,023
CP	387,122	\$71,451,961
BNS	1,050,922	\$68,195,219
VRX	1,374,994	\$63,812,934
ENB	1,192,793	\$63,635,410
BTE	9,916,501	\$63,073,933
ABX	3,011,102	\$61,581,660
POT	2,615,705	\$59,887,262
CM	586,448	\$58,674,851
XIU	2,745,778	\$55,853,131
CVE	2,827,928	\$54,044,787
MFC	2,793,252	\$52,214,039
ECA	5,592,578	\$51,295,151

ETF Trading

Daily Volume	28,510,346	Average Trade Value	\$8,972
Daily Value	\$375,728,874	Average Trade Size	681
# Trades	41,876	# of ETFs Traded	414

Top 10 ETFs by TSX Volume

Symbol	Market Volume	Market Value
HOU	7,091,219	\$29,468,357
XIU	2,745,778	\$55,853,131
HOD	2,549,270	\$38,253,944
HNU	2,229,803	\$19,873,188
XEG	1,841,085	\$21,556,370
XGD	1,125,178	\$14,195,453
HGD	961,387	\$3,729,158
HVU	892,175	\$16,849,568
HND	704,175	\$14,899,023
HGU	417,269	\$15,383,601

Top 10 ETFs by TSX Value

Symbol	Market Volume	Market Value
XIU	2,745,778	\$55,853,131
HOD	2,549,270	\$38,253,944
HOU	7,091,219	\$29,468,357
XEG	1,841,085	\$21,556,370
HNU	2,229,803	\$19,873,188
HVU	892,175	\$16,849,568
HGU	417,269	\$15,383,601
HND	704,175	\$14,899,023
XGD	1,125,178	\$14,195,453
HSU	336,418	\$10,568,281

Block Trades

726

Non Block Trades

808,207

Top 5 Block Trade Brokers by Volume

Broker	TSX Block Volume
TD SECURITIES INC.	5,650,800
DUNDEE SECURITIES LTD.	4,721,000
CIBC WORLD MARKETS INC.	4,335,800
NATIONAL BANK FINANCIAL	3,960,900
CORMARK SECURITIES INC.	2,806,200

Top 5 Block Trade Symbols by Volume

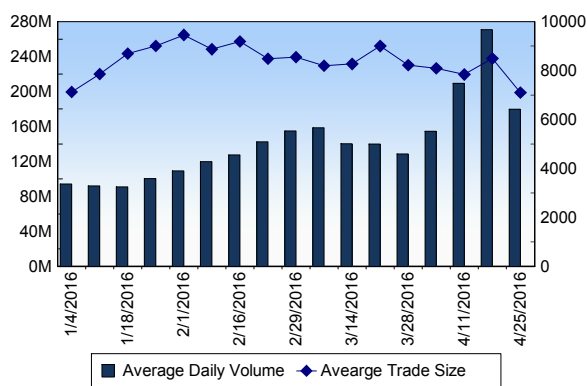
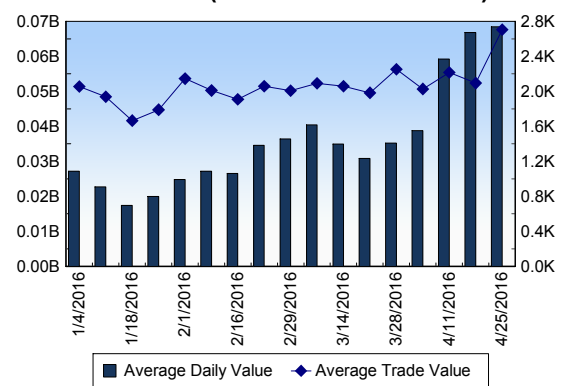
Symbol	TSX Block Volume
TV	1,843,000
HNL	1,309,600
CS	1,295,500
HOU	1,059,000
BTE	1,027,700

TSXV

Daily Volume	179,652,041
Daily Value	\$68,435,590
Daily Trades	25,310
Daily Symbols Traded	1,114

TSXV ANONYMOUS TRADING

Daily Volume	67,609,872
Daily Value	\$24,933,255
Average Trade Size	6,820
% TSXV Volume	37.63%

TSXV Volume

TSXV Value (in Canadian Dollars)

Top 20 TSXV Symbols by Volume

Symbol	TSXV Volume	TSXV Value
NXE	5,830,059	\$12,181,234
GCN	3,760,000	\$45,935
WZR	3,625,344	\$293,018
FLY	3,439,284	\$585,303
MMS	3,212,380	\$260,090
NMD	2,897,633	\$35,279
WLV	2,541,250	\$68,179
WKG	2,312,000	\$71,863
FF	1,961,979	\$1,166,063
SOI	1,925,551	\$909,165
IML	1,815,125	\$81,680
RMC	1,764,952	\$15,025,232
SKE	1,721,000	\$122,105
NMX	1,596,870	\$1,751,063
WMR	1,594,390	\$231,572
ADD	1,521,850	\$74,834
VIT	1,509,913	\$533,989
DJI	1,487,990	\$314,489
LIX	1,442,184	\$3,000,229
MFX	1,389,900	\$17,149

Top 20 TSXV Symbols by Value

Symbol	TSXV Volume	TSXV Value
RMC	1,764,952	\$15,025,232
NXE	5,830,059	\$12,181,234
LIX	1,442,184	\$3,000,229
KDI	530,775	\$1,858,078
NMX	1,596,870	\$1,751,063
FF	1,961,979	\$1,166,063
BRI	877,459	\$1,063,023
OGI	811,290	\$990,035
PE	1,047,387	\$944,133
CGC	351,126	\$932,580
SOI	1,925,551	\$909,165
RUF.UN	98,776	\$676,672
KAM	327,912	\$621,814
FLY	3,439,284	\$585,303
BCM	225,434	\$539,662
VIT	1,509,913	\$533,989
LM	448,284	\$469,098
CXO	1,272,983	\$399,014
CDB	419,900	\$377,190
PGM	831,200	\$373,614

Dark TSX/TSXV Trading

Volume	8,703,620	Daily Trades	25,340
Value	162,706,536	Daily Symbols Traded	980