



April 26, 2016

For more information, email [trading\\_sales@tsx.com](mailto:trading_sales@tsx.com)  
 Visit our blog at <http://exchange.tmx.com/>

Indices	April 26 Close	Previous Close	Change	% Change
S&P/TSX Composite Index	13,809.44	13,795.99	13.46	0.10 %
S&P/TSX 60 Index	808.17	807.82	0.35	0.04 %
S&P/TSX Venture Composite	657.44	651.91	5.53	0.85 %
S&P/TSX Completion Index	889.09	886.68	2.41	0.27 %
S&P/TSX Smallcap Index	569.73	564.71	5.02	0.89 %

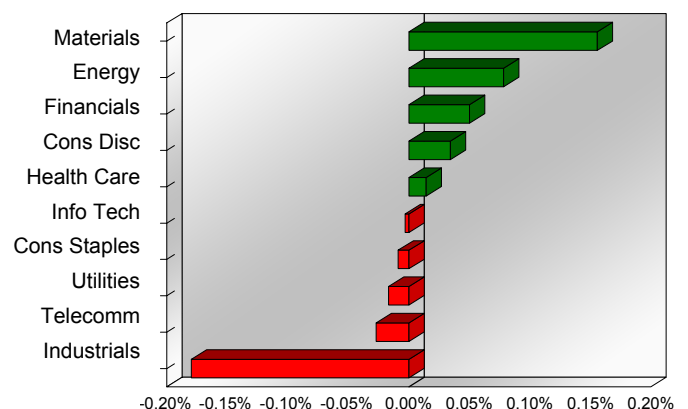
S&P/TSX Composite Index		
Advancers	Decliners	Unchanged
130	98	7

S&P/TSX Composite Index			
Top 10 Index Contributors		Top 10 Index Detractors	
Constituent	Index Contribution	Constituent	Index Contribution
RY	6.12	CNR	-26.16
G	4.60	ENB	-4.10
ECA	4.17	HSE	-3.85
CNQ	3.29	BCE	-3.16
CM	3.04	CP	-2.98
BNS	2.95	MFC	-2.50
BBD.B	2.91	T	-1.50
ABX	2.68	TD	-1.47
TCK.B	2.32	BAM.A	-1.44
SU	2.25	AGU	-1.36

S&P/TSX Composite Index			
Top 10 Advancers		Top 10 Decliners	
Constituent	Return	Constituent	Return
BBD.B	10.56%	HSE	-9.18%
WFT	7.35%	CNR	-5.07%
FR	6.95%	LIF	-3.48%
ECA	6.87%	DGC	-3.29%
BIR	6.76%	AVO	-3.25%
CIG	6.00%	UNS	-2.71%
PD	4.94%	FCR	-2.41%
TXG	4.92%	WEF	-2.23%
TCK.B	4.82%	BNP	-2.05%
ASR	4.50%	NPI	-2.02%

S&P/TSX Composite Index				
Sector	# of Index Constituents	Weight	Market Cap (\$B)	Index Contribution
Materials	45	11.73 %	\$206.99	21.48
Energy	50	19.73 %	\$345.08	10.81
Financials	46	37.62 %	\$656.29	6.94
Consumer Discretionary	25	6.51 %	\$114.08	4.75
Health Care	5	1.12 %	\$19.73	1.97
Information Technology	13	2.93 %	\$50.95	-0.42
Consumer Staples	11	4.33 %	\$75.25	-1.23
Utilities	13	2.36 %	\$40.85	-2.32
Telecommunication Services	4	5.39 %	\$93.45	-3.73
Industrials	23	8.28 %	\$141.07	-24.79
<b>S&amp;P/TSX Composite Index</b>	<b>235</b>	<b>100.00 %</b>	<b>\$1,743.75</b>	<b>13.46</b>

S&P/TSX Composite Index - Sectors Returns



This report is published by TSX Inc. TSX Inc. does not guarantee either the completeness or the accuracy of this information. The information contained in this report is provided for informational purposes only and you agree not to rely upon the information contained in this report for any trading, business or financial purpose. These sheets are printed in Canada and issued by TSX Inc. under the express condition, to which everyone receiving or making use thereof assents, that no liability shall be incurred by TSX Inc. or its affiliated companies or any other vendor or donor, including, without limitation, for reliance on or for any errors or inaccuracies in this report. Neither TMX Group Limited, TSX Inc., nor any of their affiliated companies, guarantees the completeness of the information contained in this document and are not responsible for any errors or omission in or your use of, or reliance on, the information. This publication is under copyright. © 2015 TSX Inc. All rights reserved. Do not copy, distribute, sell or modify this publication without the prior written consent of TSX Inc. [www.tmx.com/trading](http://www.tmx.com/trading)

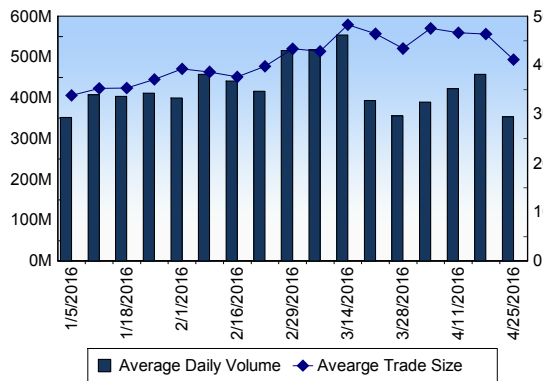
## TSX

Daily Volume	369,156,028
Daily Value	\$5,268,586,164
Daily Trades	909,880
Daily Symbols Traded	1,869

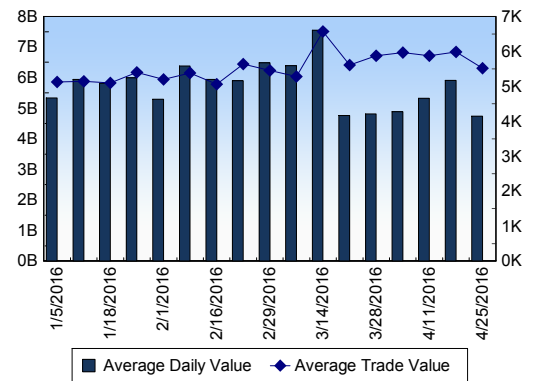
## TSX ANONYMOUS TRADING

Daily Volume	130,793,475
Daily Value	\$2,003,472,987
Average Trade Size	335
% TSX Volume	35.43 %

### TSX Volume



### TSX Value ( in Canadian Dollars )



### Top 20 TSX Symbols by Volume

Symbol	TSX Volume	TSX Value
BBD.B	19,206,191	\$37,145,003
TCK.B	9,768,646	\$133,121,393
NKO	9,555,888	\$2,369,309
K	7,370,414	\$43,386,519
HOU	6,911,994	\$29,461,033
BTE	6,860,590	\$43,468,011
FM	6,714,213	\$57,581,896
ECA	6,514,806	\$60,820,198
HSE	4,376,017	\$71,402,099
ABX	4,222,528	\$87,118,789
YRI	4,203,988	\$22,638,288
TRP	3,603,524	\$185,079,901
XIU	3,496,330	\$71,299,279
CNR	3,290,012	\$256,068,654
ELD	3,288,319	\$15,900,689
LUN	3,220,157	\$14,042,487
BTO	3,203,220	\$7,923,933
PD	3,155,597	\$18,545,347
FT	3,016,298	\$375,194
KEL	2,985,644	\$13,424,334

### Top 20 TSX Symbols by Value

Symbol	TSX Volume	TSX Value
CNR	3,290,012	\$256,068,654
TRP	3,603,524	\$185,079,901
RY	1,982,410	\$154,361,363
TCK.B	9,768,646	\$133,121,393
TD	2,226,313	\$124,052,219
ENB	2,277,303	\$120,523,829
CM	929,067	\$94,018,740
CP	515,692	\$93,586,349
BNS	1,402,627	\$91,440,412
ABX	4,222,528	\$87,118,789
BMO	950,774	\$78,205,284
BCE	1,344,241	\$78,058,583
SU	2,048,887	\$74,569,704
HSE	4,376,017	\$71,402,099
XIU	3,496,330	\$71,299,279
CNQ	1,712,139	\$66,136,498
ECA	6,514,806	\$60,820,198
G	2,633,419	\$57,660,510
FM	6,714,213	\$57,581,896
MG	1,019,302	\$55,934,617

### ETF Trading

Daily Volume	27,960,884	Average Trade Value	\$10,591
Daily Value	\$378,922,222	Average Trade Size	782
# Trades	35,777	# of ETFs Traded	401

### Top 10 ETFs by TSX Volume

Symbol	Market Volume	Market Value
HOU	6,911,994	\$29,461,033
XIU	3,496,330	\$71,299,279
HOD	2,527,571	\$36,869,161
HNU	2,040,110	\$17,635,380
HGD	1,748,738	\$6,760,492
XEG	1,527,090	\$18,026,119
XGD	956,507	\$12,072,409
HVU	848,686	\$15,179,754
HND	531,148	\$11,596,595
HXU	451,143	\$11,433,514

### Top 10 ETFs by TSX Value

Symbol	Market Volume	Market Value
XIU	3,496,330	\$71,299,279
HOD	2,527,571	\$36,869,161
HOU	6,911,994	\$29,461,033
XEG	1,527,090	\$18,026,119
HNU	2,040,110	\$17,635,380
HGU	436,553	\$16,116,168
HVU	848,686	\$15,179,754
XGD	956,507	\$12,072,409
HND	531,148	\$11,596,595
HXU	451,143	\$11,433,514

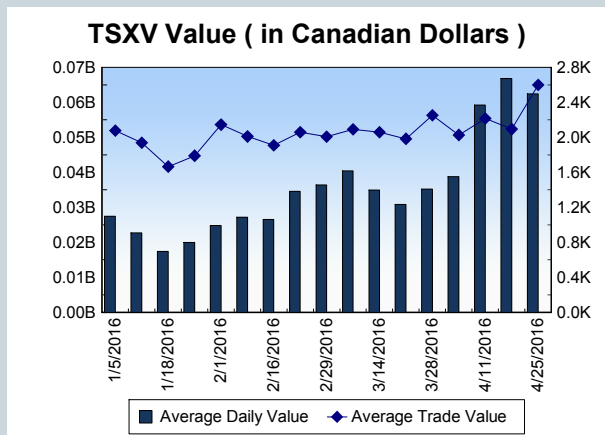
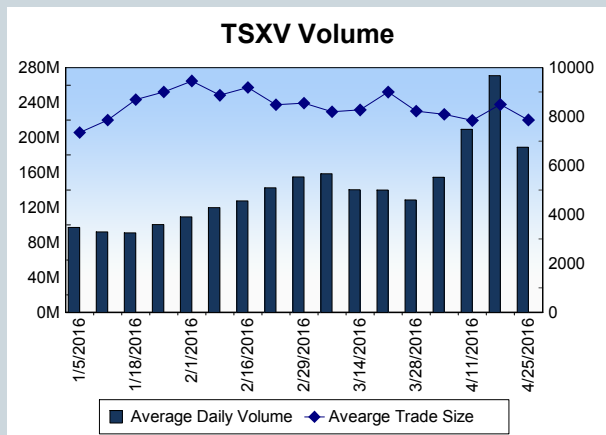
<b>Block Trades</b>	<b>Non Block Trades</b>
890	908,990

Top 5 Block Trade Brokers by Volume	
Broker	TSX Block Volume
TD SECURITIES INC.	7,961,700
CIBC WORLD MARKETS INC.	4,786,000
SCOTIA CAPITAL INC.	3,682,100
CANACCORD GENUITY CORI	2,524,300
NATIONAL BANK FINANCIAL	2,414,300

Top 5 Block Trade Symbols by Volume	
Symbol	TSX Block Volume
XIU	1,824,000
H	1,396,500
K	992,800
TRP	981,200
HOU	958,700

TSXV	
Daily Volume	198,078,700
Daily Value	\$56,472,823
Daily Trades	22,740
Daily Symbols Traded	1,103

TSXV ANONYMOUS TRADING	
Daily Volume	78,629,999
Daily Value	\$21,885,224
Average Trade Size	8,929
% TSXV Volume	39.70%



Top 20 TSXV Symbols by Volume		
Symbol	TSXV Volume	TSXV Value
ADK	8,240,000	\$329,600
SGC	5,941,575	\$1,998,697
CIN	4,955,919	\$185,338
ICG	3,861,661	\$2,409,422
RTM	3,047,000	\$30,470
TLL.H	2,655,800	\$139,930
SGC.WT	2,511,912	\$41,786
TGV	2,339,114	\$56,085
EAS	2,309,212	\$23,092
NX	2,090,385	\$282,220
NMX	2,019,207	\$2,317,034
MMS	1,986,887	\$157,172
GEM	1,921,771	\$67,373
DRV	1,754,200	\$26,313
MTO	1,751,539	\$131,993
PHM	1,747,717	\$529,596
BGD	1,646,943	\$17,119
LAB	1,606,534	\$122,574
GPH	1,577,621	\$211,767
WZR	1,572,125	\$135,660

Top 20 TSXV Symbols by Value		
Symbol	TSXV Volume	TSXV Value
RMC	1,351,154	\$11,167,967
NXE	1,486,611	\$3,186,949
LIX	1,156,212	\$2,443,904
ICG	3,861,661	\$2,409,422
NMX	2,019,207	\$2,317,034
SGC	5,941,575	\$1,998,697
BRI	1,446,019	\$1,965,420
PE	1,210,822	\$1,097,768
BCM	377,288	\$878,767
FF	1,382,741	\$841,369
CGC	315,252	\$835,995
SOI	1,540,680	\$623,950
OGI	504,768	\$611,918
TGM	905,690	\$609,909
LI	664,300	\$585,649
BTR	1,370,072	\$538,910
PHM	1,747,717	\$529,596
QHR	282,626	\$485,679
CNX	972,422	\$415,413
CTZ	1,206,000	\$410,220

Dark TSX/TSXV Trading			
Volume	9,140,290	Daily Trades	25,520
Value	183,101,131	Daily Symbols Traded	981