



May 12, 2016

For more information, email [trading\\_sales@tsx.com](mailto:trading_sales@tsx.com)  
 Visit our blog at <http://exchange.tmx.com/>

Indices	May 12 Close	Previous Close	Change	% Change
S&P/TSX Composite Index	13,787.80	13,788.21	-0.41	0.00 %
S&P/TSX 60 Index	803.35	803.54	-0.19	-0.02 %
S&P/TSX Venture Composite	673.59	669.48	4.11	0.61 %
S&P/TSX Completion Index	900.27	899.70	0.57	0.06 %
S&P/TSX Smallcap Index	586.83	588.68	-1.85	-0.31 %

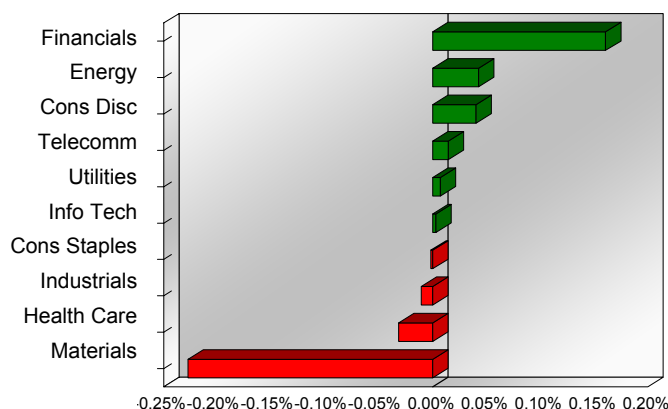
S&P/TSX Composite Index		
Advancers	Decliners	Unchanged
117	113	5

S&P/TSX Composite Index			
Top 10 Index Contributors		Top 10 Index Detractors	
Constituent	Index Contribution	Constituent	Index Contribution
RY	4.12	G	-6.12
CPG	4.01	SU	-4.51
CTC.A	3.51	VRX	-4.36
FFH	3.33	ABX	-4.06
ENB	3.22	FNV	-3.30
CNQ	3.03	FM	-2.67
TD	2.35	AEM	-2.10
SLF	1.99	K	-2.05
BMO	1.94	SLW	-1.50
BNS	1.71	ECA	-1.35

S&P/TSX Composite Index			
Top 10 Advancers		Top 10 Decliners	
Constituent	Return	Constituent	Return
BIR	9.55%	PBH	-8.01%
BNP	8.10%	SCL	-7.92%
QBR.B	6.21%	CHE.UN	-6.08%
SSO	5.77%	HBM	-5.85%
MEG	5.77%	VRX	-5.61%
TCN	5.43%	MNW	-5.59%
NVA	5.36%	FM	-5.31%
SGY	5.05%	ASR	-5.23%
CPG	4.91%	G	-3.86%
KEL	4.58%	AVO	-3.54%

S&P/TSX Composite Index				
Sector	# of Index Constituents	Weight	Market Cap (\$B)	Index Contribution
Financials	46	37.22 %	\$650.82	22.17
Energy	50	19.30 %	\$336.71	5.90
Consumer Discretionary	25	6.51 %	\$113.98	5.58
Telecommunication Services	4	5.53 %	\$96.61	2.02
Utilities	13	2.47 %	\$43.12	0.98
Information Technology	13	2.88 %	\$50.23	0.40
Consumer Staples	11	4.39 %	\$76.48	-0.26
Industrials	23	8.13 %	\$141.43	-1.47
Health Care	5	0.91 %	\$15.33	-4.38
Materials	45	12.65 %	\$216.31	-31.35
<b>S&amp;P/TSX Composite Index</b>	<b>235</b>	<b>100.00 %</b>	<b>\$1,741.01</b>	<b>-0.41</b>

S&P/TSX Composite Index - Sectors Returns



This report is published by TSX Inc. TSX Inc. does not guarantee either the completeness or the accuracy of this information. The information contained in this report is provided for informational purposes only and you agree not to rely upon the information contained in this report for any trading, business or financial purpose. These sheets are printed in Canada and issued by TSX Inc. under the express condition, to which everyone receiving or making use thereof assents, that no liability shall be incurred by TSX Inc. or its affiliated companies or any other vendor or donor, including, without limitation, for reliance on or for any errors or inaccuracies in this report. Neither TMX Group Limited, TSX Inc., nor any of their affiliated companies, guarantees the completeness of the information contained in this document and are not responsible for any errors or omission in or your use of, or reliance on, the information. This publication is under copyright. © 2015 TSX Inc. All rights reserved. Do not copy, distribute, sell or modify this publication without the prior written consent of TSX Inc. [www.tmx.com/trading](http://www.tmx.com/trading)

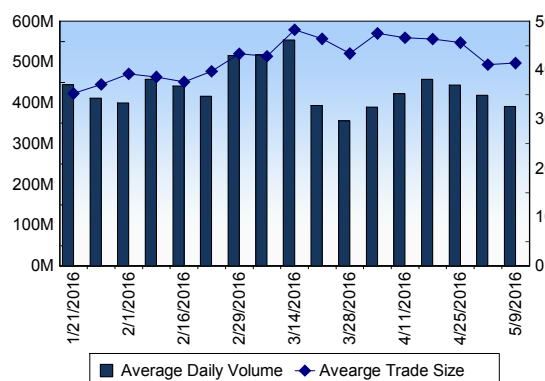
## TSX

Daily Volume	393,320,931
Daily Value	\$5,226,367,027
Daily Trades	952,041
Daily Symbols Traded	1,876

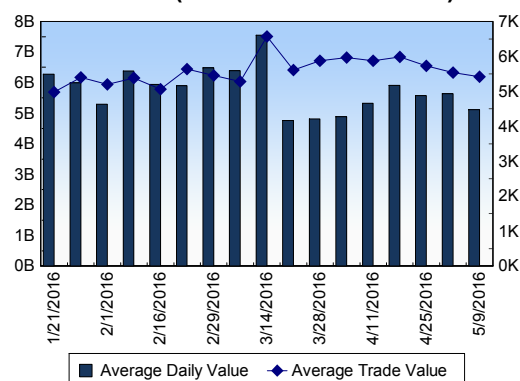
## TSX ANONYMOUS TRADING

Daily Volume	133,537,403
Daily Value	\$1,889,209,431
Average Trade Size	338
% TSX Volume	33.95 %

### TSX Volume



### TSX Value ( in Canadian Dollars )



### Top 20 TSX Symbols by Volume

Symbol	TSX Volume	TSX Value
RMP	9,769,703	\$12,442,613
FM	8,473,499	\$75,471,376
BTE	7,508,408	\$46,188,420
ECA	7,440,662	\$65,903,952
K	7,355,033	\$48,495,423
TCK.B	7,146,494	\$89,406,765
YRI	6,927,319	\$42,720,091
TXG	6,357,937	\$12,526,148
HOU	5,990,657	\$28,407,733
CPG	5,797,477	\$123,599,026
IMG	5,649,893	\$27,963,823
ELD	5,215,988	\$31,980,636
DGI	5,188,075	\$103,762
PGF	5,101,134	\$10,583,950
HSE	4,969,213	\$76,206,451
BTO	4,473,198	\$12,148,652
MFC	3,796,132	\$68,982,094
PWT	3,696,492	\$4,073,378
G	3,565,871	\$83,579,478
NHC	3,390,128	\$13,399,047

### Top 20 TSX Symbols by Value

Symbol	TSX Volume	TSX Value
RY	1,966,664	\$150,696,907
TD	2,222,050	\$124,637,715
CPG	5,797,477	\$123,599,026
CM	960,751	\$96,688,875
BNS	1,468,302	\$92,209,817
SU	2,610,410	\$89,988,393
TCK.B	7,146,494	\$89,406,765
BMO	1,033,569	\$84,442,704
G	3,565,871	\$83,579,478
ABX	3,341,974	\$78,262,111
CP	437,753	\$77,539,857
HSE	4,969,213	\$76,206,451
FM	8,473,499	\$75,471,376
ENB	1,455,829	\$75,168,934
T	1,772,571	\$72,129,805
CNR	908,205	\$69,463,352
MFC	3,796,132	\$68,982,094
XIU	3,390,024	\$68,587,173
ECA	7,440,662	\$65,903,952
CNQ	1,758,773	\$65,401,453

## ETF Trading

Daily Volume	28,276,011	Average Trade Value	\$10,057
Daily Value	\$390,556,038	Average Trade Size	728
# Trades	38,833	# of ETFs Traded	413

### Top 10 ETFs by TSX Volume

Symbol	Market Volume	Market Value
HOU	5,990,657	\$28,407,733
XIU	3,390,024	\$68,587,173
HOD	2,165,513	\$27,676,339
HGD	1,919,921	\$5,835,758
XGD	1,607,009	\$22,361,762
HNU	1,485,457	\$12,633,419
XEG	1,425,864	\$16,336,329
HXU	1,179,884	\$29,396,427
HVU	1,080,389	\$17,617,893
ZEB	628,799	\$14,232,066

### Top 10 ETFs by TSX Value

Symbol	Market Volume	Market Value
XIU	3,390,024	\$68,587,173
HXU	1,179,884	\$29,396,427
HOU	5,990,657	\$28,407,733
HOD	2,165,513	\$27,676,339
XGD	1,607,009	\$22,361,762
HGU	455,550	\$20,086,951
HVU	1,080,389	\$17,617,893
XEG	1,425,864	\$16,336,329
ZEB	628,799	\$14,232,066
HNU	1,485,457	\$12,633,419

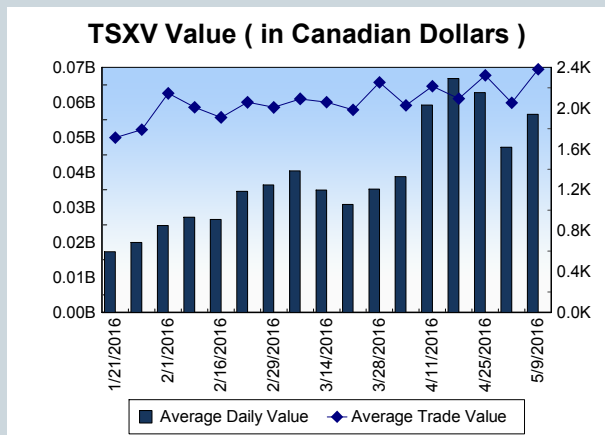
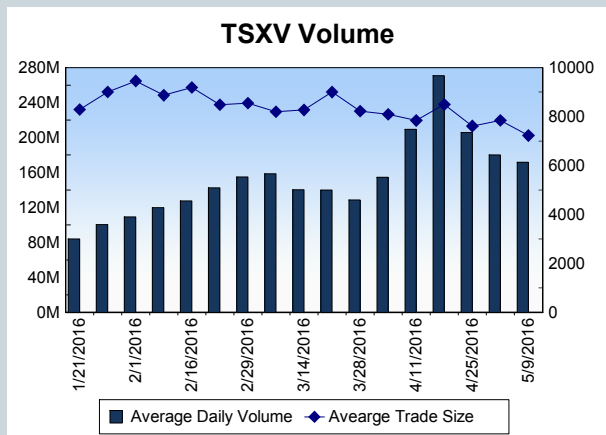
<b>Block Trades</b>	<b>Non Block Trades</b>
823	951,218

Top 5 Block Trade Brokers by Volume	
Broker	TSX Block Volume
NATIONAL BANK FINANCIAL	19,585,500
TD SECURITIES INC.	7,052,000
CIBC WORLD MARKETS INC.	5,406,600
DUNDEE SECURITIES LTD.	4,225,900
GMP SECURITIES L.P.	3,239,700

Top 5 Block Trade Symbols by Volume	
Symbol	TSX Block Volume
HSE	3,827,600
PGF	3,286,800
CPG	2,392,500
PWT	2,314,300
RMP	1,910,800

TSXV	
Daily Volume	184,308,541
Daily Value	\$78,827,458
Daily Trades	27,299
Daily Symbols Traded	1,049

TSXV ANONYMOUS TRADING	
Daily Volume	71,039,944
Daily Value	\$29,957,623
Average Trade Size	6,492
% TSXV Volume	38.54%



Top 20 TSXV Symbols by Volume		
Symbol	TSXV Volume	TSXV Value
KAM	12,369,093	\$31,142,776
ARY	4,567,500	\$533,563
MMS	4,235,020	\$655,805
ICG	3,780,963	\$2,704,606
VIT	3,465,254	\$1,372,497
ZAO	3,246,426	\$481,595
DUG	2,899,500	\$365,378
PE	2,801,732	\$1,455,456
ELT	2,793,000	\$145,273
STM	2,407,000	\$240,995
ADD	2,115,852	\$43,320
GOM	1,998,766	\$207,566
LAD	1,969,900	\$244,056
HSR	1,858,935	\$188,257
ION	1,855,585	\$158,303
SDR	1,822,000	\$9,135
NMX	1,661,922	\$2,018,501
SRJ	1,600,500	\$56,018
RHT	1,597,721	\$400,100
LIX	1,356,175	\$2,808,921

Top 20 TSXV Symbols by Value		
Symbol	TSXV Volume	TSXV Value
KAM	12,369,093	\$31,142,776
LIX	1,356,175	\$2,808,921
ICG	3,780,963	\$2,704,606
NMX	1,661,922	\$2,018,501
PE	2,801,732	\$1,455,456
VIT	3,465,254	\$1,372,497
NXE	543,342	\$1,183,711
RMC	122,194	\$1,081,900
RUF.UN	134,780	\$984,775
ATC	1,007,270	\$796,702
ANF	647,640	\$782,757
QHR	455,667	\$781,275
AUG	395,460	\$781,087
GRG	1,096,152	\$705,522
NTS	560,888	\$680,553
GSV	347,903	\$666,396
BRI	439,789	\$660,638
MMS	4,235,020	\$655,805
FPC	1,116,200	\$620,569
FF	740,019	\$583,850

Dark TSX/TSXV Trading			
Volume	10,905,260	Daily Trades	31,902
Value	228,648,179	Daily Symbols Traded	1,020