



January 13, 2017

For more information, email [trading\\_sales@tsx.com](mailto:trading_sales@tsx.com)  
 Visit our blog at <http://exchange.tmx.com/>

Indices	January 13 Close	Previous Close	Change	% Change
S&P/TSX Composite Index	15,497.28			%
S&P/TSX 60 Index	916.37			%
S&P/TSX Venture Composite	794.51			%
S&P/TSX Completion Index	968.23			%
S&P/TSX Smallcap Index	666.92			%

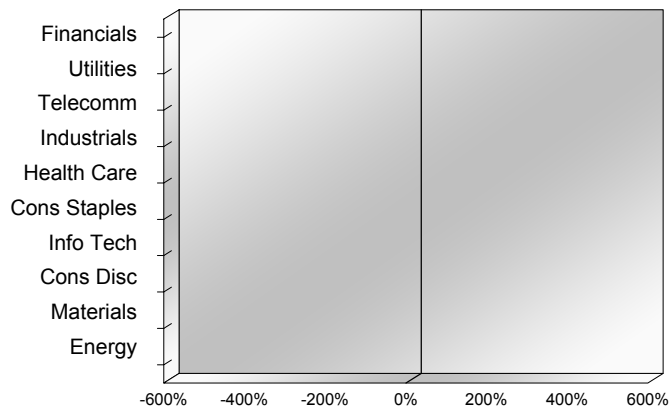
S&P/TSX Composite Index		
Advancers	Decliners	Unchanged
0	0	0

S&P/TSX Composite Index			
Top 10 Index Contributors		Top 10 Index Detractors	
Constituent	Index Contribution	Constituent	Index Contribution

S&P/TSX Composite Index			
Top 10 Advancers		Top 10 Decliners	
Constituent	Return	Constituent	Return
	%		%

S&P/TSX Composite Index				
Sector	# of Index Constituents	Weight	Market Cap (\$B)	Index Contribution
Financials	27	%	\$718.08	
Utilities	14	%	\$57.02	
Telecommunication Services	4	%	\$97.91	
Industrials	26	%	\$182.03	
Health Care	5	%	\$12.07	
Consumer Staples	11	%	\$77.04	
Information Technology	12	%	\$55.50	
Consumer Discretionary	23	%	\$101.78	
Materials	56	%	\$254.34	
Energy	50	%	\$422.62	
<b>S&amp;P/TSX Composite Index</b>	<b>228</b>	<b>%</b>	<b>\$1,978.39</b>	

S&P/TSX Composite Index - Sectors Returns



This report is published by TSX Inc. TSX Inc. does not guarantee either the completeness or the accuracy of this information. The information contained in this report is provided for informational purposes only and you agree not to rely upon the information contained in this report for any trading, business or financial purpose. These sheets are printed in Canada and issued by TSX Inc. under the express condition, to which everyone receiving or making use thereof assents, that no liability shall be incurred by TSX Inc. or its affiliated companies or any other vendor or donor, including, without limitation, for reliance on or for any errors or inaccuracies in this report. Neither TMX Group Limited, TSX Inc., nor any of their affiliated companies, guarantees the completeness of the information contained in this document and are not responsible for any errors or omission in or your use of, or reliance on, the information. This publication is under copyright. © 2015 TSX Inc. All rights reserved. Do not copy, distribute, sell or modify this publication without the prior written consent of TSX Inc. [www.tmx.com/trading](http://www.tmx.com/trading)

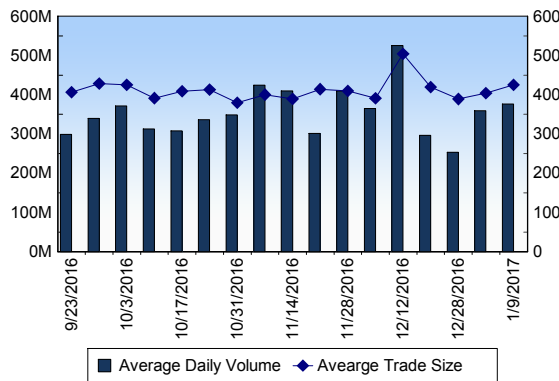
## TSX

Daily Volume	335,477,420
Daily Value	\$5,068,941,570
Daily Trades	795,108
Daily Symbols Traded	1,880

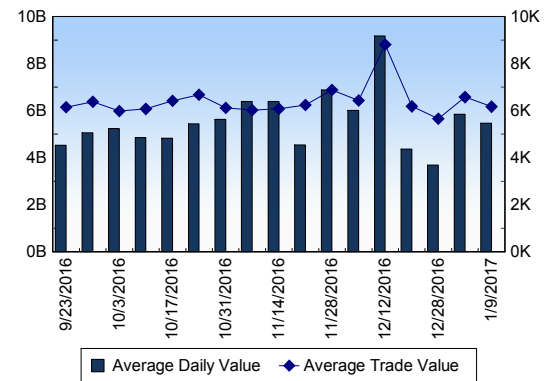
## TSX ANONYMOUS TRADING

Daily Volume	130,233,997
Daily Value	\$2,199,691,419
Average Trade Size	389
% TSX Volume	38.82 %

### TSX Volume



### TSX Value ( in Canadian Dollars )



### Top 20 TSX Symbols by Volume

Symbol	TSX Volume	TSX Value
CIA	8,016,500	\$5,683,049
BTO	6,482,077	\$23,327,427
MGA	5,740,684	\$1,329,910
NXE	5,454,497	\$17,897,140
IVN	5,346,831	\$17,120,531
YRI	5,275,833	\$21,673,820
BBD.B	5,270,705	\$13,615,718
ELD	4,355,611	\$19,419,206
K	4,301,364	\$18,769,398
UWE	4,117,332	\$182,318
CUS	3,956,882	\$6,451,432
MFC	3,892,139	\$95,760,043
FM	3,825,416	\$64,701,325
ECA	3,795,196	\$64,594,631
IMG	3,602,603	\$20,846,699
CCO	3,590,122	\$61,500,322
LUN	3,580,789	\$29,011,177
XIU	3,451,620	\$79,506,299
ABX	3,347,929	\$73,709,833
DML	3,317,184	\$3,293,810

### Top 20 TSX Symbols by Value

Symbol	TSX Volume	TSX Value
RY	2,320,145	\$219,326,746
TD	2,836,524	\$190,847,138
BNS	1,818,611	\$141,137,916
BMO	1,159,679	\$113,889,010
CNQ	2,441,535	\$100,327,988
CM	900,010	\$100,195,390
MFC	3,892,139	\$95,760,043
ALA	2,799,410	\$90,072,001
SU	2,057,642	\$87,676,838
ENB	1,524,196	\$86,362,543
CNR	899,997	\$83,968,536
TECK.B	2,537,462	\$81,604,890
XIU	3,451,620	\$79,506,299
SLF	1,479,555	\$77,337,160
ABX	3,347,929	\$73,709,833
FNV	779,785	\$64,919,993
FM	3,825,416	\$64,701,325
ECA	3,795,196	\$64,594,631
CCO	3,590,122	\$61,500,322
BCE	989,256	\$57,610,760

## ETF Trading

Daily Volume	25,551,612	Average Trade Value	\$10,620
Daily Value	\$406,484,946	Average Trade Size	668
# Trades	38,277	# of ETFs Traded	444

### Top 10 ETFs by TSX Volume

Symbol	Market Volume	Market Value
XIU	3,451,620	\$79,506,299
HOU	2,516,653	\$21,178,449
HGD	2,306,086	\$22,153,803
HND	1,961,648	\$18,653,358
HGU	1,764,315	\$28,579,860
HOD	1,746,156	\$16,608,316
HNU	1,716,806	\$18,521,830
HVU	925,201	\$13,081,679
XGD	756,619	\$9,638,886
XEG	578,716	\$7,776,263

### Top 10 ETFs by TSX Value

Symbol	Market Volume	Market Value
XIU	3,451,620	\$79,506,299
HGU	1,764,315	\$28,579,860
HGD	2,306,086	\$22,153,803
HOU	2,516,653	\$21,178,449
HND	1,961,648	\$18,653,358
HNU	1,716,806	\$18,521,830
HOD	1,746,156	\$16,608,316
ZSP	461,318	\$15,199,282
HXT	466,344	\$14,471,749
HVU	925,201	\$13,081,679

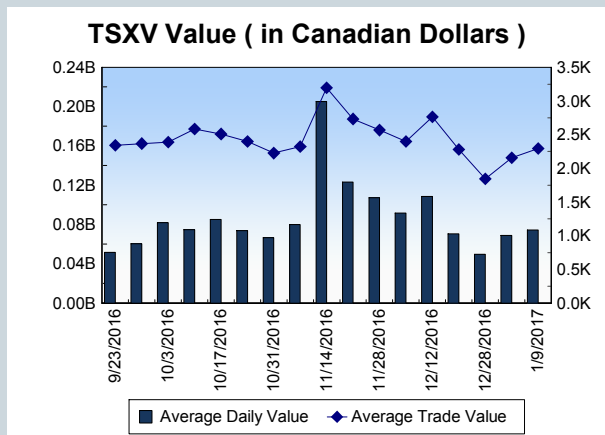
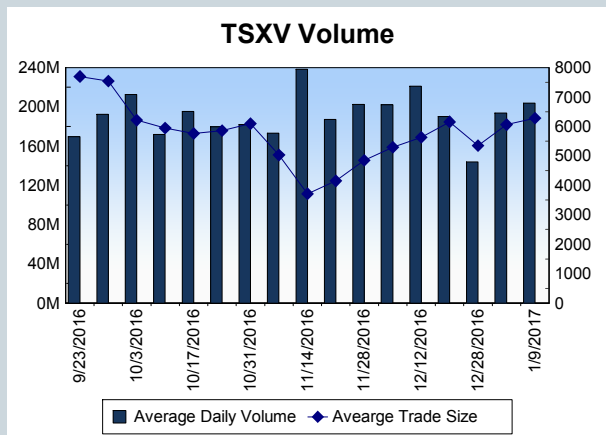
<b>Block Trades</b>	<b>Non Block Trades</b>
918	794,190

Top 5 Block Trade Brokers by Volume	
Broker	TSX Block Volume
TD SECURITIES INC.	16,070,700
GOLDMAN SACHS CANADA I	8,833,100
CIBC WORLD MARKETS INC.	5,879,100
CORMARK SECURITIES INC.	5,552,700
RBC CAPITAL MARKETS	5,243,800

Top 5 Block Trade Symbols by Volume	
Symbol	TSX Block Volume
CUS	3,431,400
UWE	3,000,000
NXE	2,694,400
XIU	1,944,200
EFN	1,411,300

TSXV	
Daily Volume	179,552,911
Daily Value	\$60,047,455
Daily Trades	27,982
Daily Symbols Traded	1,131

TSXV ANONYMOUS TRADING	
Daily Volume	72,311,211
Daily Value	\$22,931,966
Average Trade Size	7,048
% TSXV Volume	40.27%



Top 20 TSXV Symbols by Volume		
Symbol	TSXV Volume	TSXV Value
JP.RT	5,702,035	\$117,126
ZEE	4,666,655	\$753,826
MXL	4,087,870	\$749,607
JP	3,772,500	\$101,905
MMN	3,638,145	\$168,082
XOP	2,884,506	\$86,453
WKG	2,800,852	\$94,610
ART	2,670,970	\$509,575
KSK	2,327,951	\$206,799
VEL	2,172,801	\$21,728
ADI	1,975,800	\$373,576
FNC	1,876,620	\$101,579
AUV	1,721,000	\$299,335
ARY	1,707,400	\$234,341
NXO	1,667,123	\$1,999,799
SXL	1,589,022	\$51,848
KEK	1,536,151	\$2,728,204
LIC	1,521,205	\$221,779
NXS	1,515,682	\$209,639
LEP	1,501,634	\$117,238

Top 20 TSXV Symbols by Value		
Symbol	TSXV Volume	TSXV Value
ACB	1,381,086	\$3,440,786
APH	513,297	\$2,775,136
KEK	1,536,151	\$2,728,204
NXO	1,667,123	\$1,999,799
MT	261,605	\$1,756,937
OGI	511,113	\$1,362,695
BUS	712,012	\$1,268,695
FF	1,313,484	\$1,110,494
LIX	451,545	\$923,008
PEO	203,450	\$921,065
STUS.A	92,131	\$850,461
ZEE	4,666,655	\$753,826
MXL	4,087,870	\$749,607
SNS	482,936	\$728,411
GSV	245,600	\$710,912
TWM	414,225	\$653,456
KALY	690,812	\$640,430
PAT	394,398	\$614,678
LUM	663,062	\$613,188
VPY	428,900	\$543,833

Dark TSX/TSXV Trading			
Volume	11,545,020	Daily Trades	35,640
Value	218,515,473	Daily Symbols Traded	1,031