



February 1, 2017

For more information, email trading_sales@tsx.com
 Visit our blog at <http://exchange.tmx.com/>

Indices	February 1 Close	Previous Close	Change	% Change
S&P/TSX Composite Index	15,402.39			%
S&P/TSX 60 Index	909.15			%
S&P/TSX Venture Composite	813.90			%
S&P/TSX Completion Index	967.48			%
S&P/TSX Smallcap Index	668.26			%

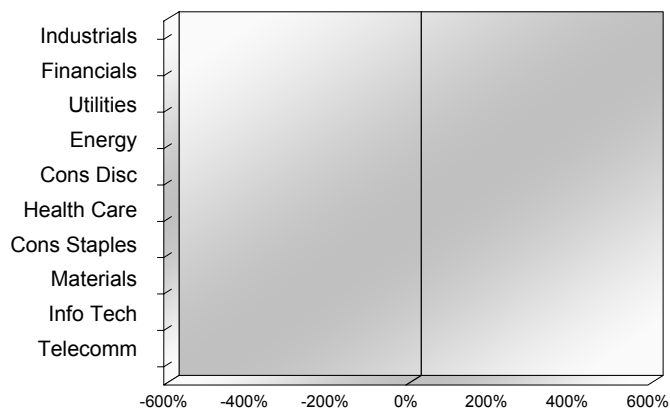
S&P/TSX Composite Index		
Advancers	Decliners	Unchanged
0	0	0

S&P/TSX Composite Index			
Top 10 Index Contributors		Top 10 Index Detractors	
Constituent	Index Contribution	Constituent	Index Contribution

S&P/TSX Composite Index			
Top 10 Advancers		Top 10 Decliners	
Constituent	Return	Constituent	Return
	%		%

S&P/TSX Composite Index				
Sector	# of Index Constituents	Weight	Market Cap (\$B)	Index Contribution
Industrials	26	%	\$179.57	
Financials	27	%	\$717.75	
Utilities	14	%	\$57.09	
Energy	50	%	\$406.92	
Consumer Discretionary	22	%	\$100.25	
Health Care	5	%	\$11.53	
Consumer Staples	11	%	\$75.52	
Materials	56	%	\$262.00	
Information Technology	12	%	\$55.39	
Telecommunication Services	4	%	\$99.41	
S&P/TSX Composite Index	227	%	\$1,965.44	

S&P/TSX Composite Index - Sectors Returns



This report is published by TSX Inc. TSX Inc. does not guarantee either the completeness or the accuracy of this information. The information contained in this report is provided for informational purposes only and you agree not to rely upon the information contained in this report for any trading, business or financial purpose. These sheets are printed in Canada and issued by TSX Inc. under the express condition, to which everyone receiving or making use thereof assents, that no liability shall be incurred by TSX Inc. or its affiliated companies or any other vendor or donor, including, without limitation, for reliance on or for any errors or inaccuracies in this report. Neither TMX Group Limited, TSX Inc., nor any of their affiliated companies, guarantees the completeness of the information contained in this document and are not responsible for any errors or omission in or your use of, or reliance on, the information. This publication is under copyright. © 2015 TSX Inc. All rights reserved. Do not copy, distribute, sell or modify this publication without the prior written consent of TSX Inc. www.tmx.com/trading

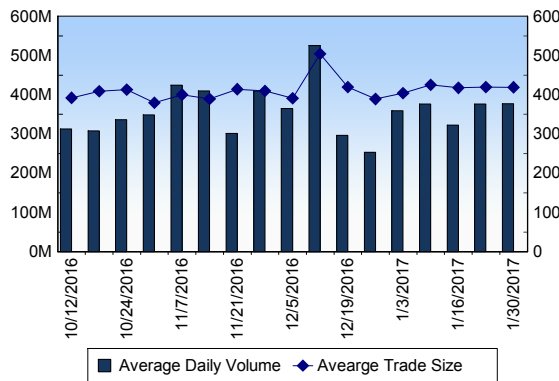
TSX

Daily Volume	382,282,520
Daily Value	\$5,396,043,120
Daily Trades	893,580
Daily Symbols Traded	1,898

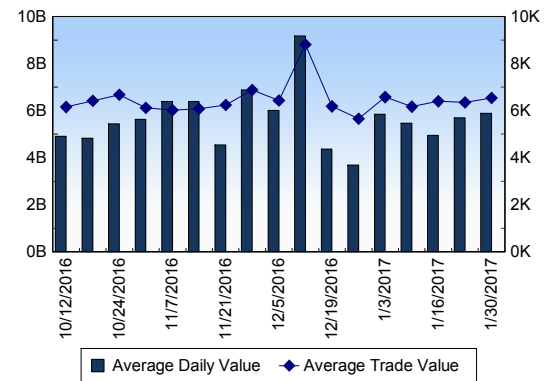
TSX ANONYMOUS TRADING

Daily Volume	134,860,074
Daily Value	\$2,161,096,034
Average Trade Size	343
% TSX Volume	35.28 %

TSX Volume



TSX Value (in Canadian Dollars)



Top 20 TSX Symbols by Volume

Symbol	TSX Volume	TSX Value
BTO	13,386,703	\$54,332,347
K	11,404,242	\$56,673,676
YRI	9,046,442	\$38,825,470
TPL	5,870,199	\$172,868
HOU	5,535,360	\$46,371,352
CCO	5,342,158	\$78,193,533
BTE	4,979,119	\$25,682,879
HOD	4,624,914	\$43,655,686
SPE	4,601,786	\$13,466,864
NGD	4,350,312	\$15,813,015
ECA	4,265,518	\$70,408,473
ABX	4,025,539	\$96,373,073
NML	3,986,811	\$1,001,008
GTE	3,929,292	\$13,622,697
BBD.B	3,794,386	\$9,662,831
LUN	3,685,835	\$29,444,626
AGI	3,631,015	\$35,892,776
MFC	3,600,074	\$90,252,682
HRT	3,370,009	\$1,275,659
G	3,230,611	\$67,081,700

Top 20 TSX Symbols by Value

Symbol	TSX Volume	TSX Value
RY	1,714,949	\$160,734,190
TD	2,239,867	\$151,246,679
CM	1,010,900	\$112,756,952
BNS	1,395,602	\$108,718,890
SU	2,568,280	\$104,049,111
CNR	1,150,966	\$103,836,937
ABX	4,025,539	\$96,373,073
ENB	1,657,278	\$91,300,235
MFC	3,600,074	\$90,252,682
GIB.A	1,361,969	\$86,657,112
BCE	1,448,471	\$84,466,509
BMO	819,162	\$80,511,346
TRP	1,276,723	\$78,497,524
CCO	5,342,158	\$78,193,533
TECK.B	2,248,098	\$73,538,665
ECA	4,265,518	\$70,408,473
NA	1,255,793	\$70,059,306
XIU	3,035,900	\$69,458,757
CP	349,088	\$68,827,768
G	3,230,611	\$67,081,700

ETF Trading

Daily Volume	33,400,954	Average Trade Value	\$11,089
Daily Value	\$473,158,063	Average Trade Size	783
# Trades	42,671	# of ETFs Traded	470

Top 10 ETFs by TSX Volume

Symbol	Market Volume	Market Value
HOU	5,535,360	\$46,371,352
HOD	4,624,914	\$43,655,686
XIU	3,035,900	\$69,458,757
HGD	2,715,763	\$23,625,852
HNU	2,214,898	\$20,716,257
HND	1,540,496	\$16,359,890
XEG	1,539,106	\$19,748,055
HGU	1,450,477	\$25,574,220
HVU	941,458	\$10,540,003
XGD	841,194	\$11,178,327

Top 10 ETFs by TSX Value

Symbol	Market Volume	Market Value
XIU	3,035,900	\$69,458,757
HOU	5,535,360	\$46,371,352
HOD	4,624,914	\$43,655,686
HGU	1,450,477	\$25,574,220
HGD	2,715,763	\$23,625,852
HNU	2,214,898	\$20,716,257
XEG	1,539,106	\$19,748,055
HND	1,540,496	\$16,359,890
XFN	325,173	\$11,740,109
HXU	359,110	\$11,605,385

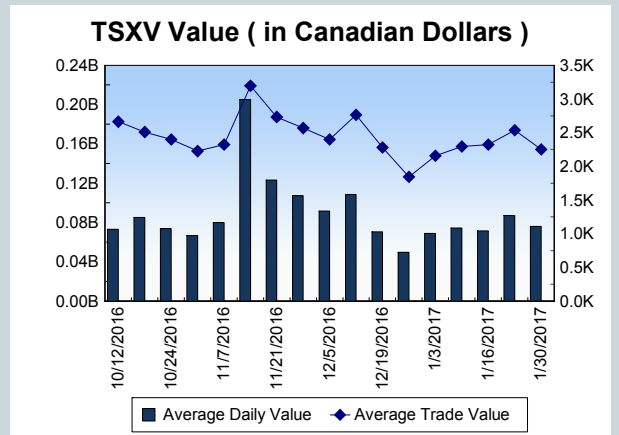
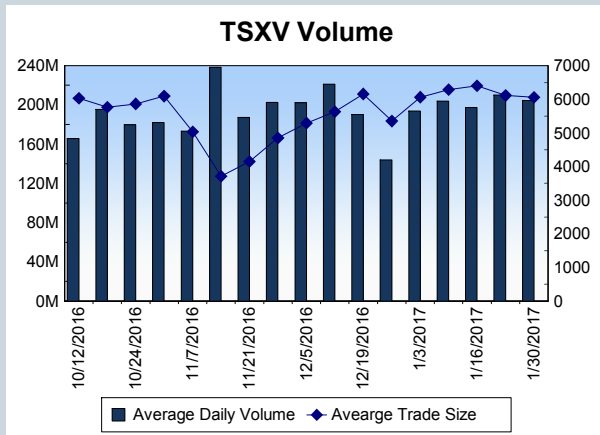
Block Trades	Non Block Trades
1,034	892,546

Top 5 Block Trade Brokers by Volume	
Broker	TSX Block Volume
CORMARK SECURITIES INC.	15,010,700
TD SECURITIES INC.	13,916,600
CIBC WORLD MARKETS INC.	6,570,500
CANACCORD GENUITY CORP	3,578,700
NATIONAL BANK FINANCIAL	3,152,100

Top 5 Block Trade Symbols by Volume	
Symbol	TSX Block Volume
BTO	5,205,100
K	4,363,400
YRI	3,061,500
JAG	1,901,000
AGI	1,829,900

TSXV	
Daily Volume	210,690,826
Daily Value	\$72,674,898
Daily Trades	32,669
Daily Symbols Traded	1,163

TSXV ANONYMOUS TRADING	
Daily Volume	79,075,916
Daily Value	\$26,293,361
Average Trade Size	6,881
% TSXV Volume	37.53%



Top 20 TSXV Symbols by Volume		
Symbol	TSXV Volume	TSXV Value
FGD	8,999,664	\$4,226,862
MKN	6,419,373	\$93,270
PGC	5,428,000	\$27,140
MXL	3,526,816	\$864,966
SCG	3,302,120	\$722,007
CXB	3,081,208	\$709,839
NIP	2,631,748	\$215,772
IZN	2,596,911	\$843,397
JAX	2,520,650	\$171,552
ARY	2,347,200	\$240,555
AU	2,330,112	\$2,604,560
NAI	2,007,300	\$31,035
ICG	1,764,233	\$1,392,541
BEL	1,745,049	\$59,242
NNN	1,743,657	\$129,782
DBV	1,739,600	\$206,237
NZ	1,721,168	\$43,154
CBG	1,709,134	\$120,164
NRG	1,708,925	\$437,925
PTU	1,696,511	\$264,621

Top 20 TSXV Symbols by Value		
Symbol	TSXV Volume	TSXV Value
APH	857,856	\$4,569,511
FGD	8,999,664	\$4,226,862
AU	2,330,112	\$2,604,560
EMC	606,631	\$2,209,298
RUF.UN	259,938	\$2,194,156
ACB	925,403	\$2,123,828
NXO	869,355	\$1,502,382
ICG	1,764,233	\$1,392,541
CDB	924,899	\$1,383,307
OGI	395,368	\$1,088,477
JTR	739,072	\$1,049,169
DYA	1,226,346	\$932,121
MXL	3,526,816	\$864,966
WML	548,510	\$855,092
IZN	2,596,911	\$843,397
LIX	367,517	\$811,591
GPY	511,350	\$729,846
SCG	3,302,120	\$722,007
CXB	3,081,208	\$709,839
BBI	1,210,440	\$705,302

Dark TSX/TSXV Trading			
Volume	10,800,470	Daily Trades	35,204
Value	240,841,215	Daily Symbols Traded	1,126