



February 13, 2017

For more information, email trading_sales@tsx.com
 Visit our blog at <http://exchange.tmx.com/>

Indices	February 13 Close	Previous Close	Change	% Change
S&P/TSX Composite Index	15,756.58			%
S&P/TSX 60 Index	929.68			%
S&P/TSX Venture Composite	837.24			%
S&P/TSX Completion Index	990.91			%
S&P/TSX Smallcap Index	691.79			%

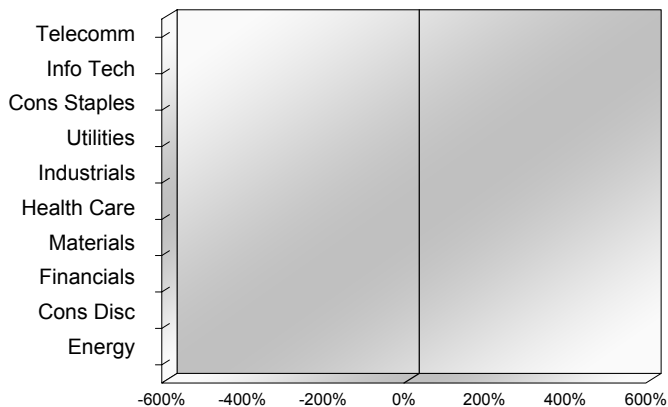
S&P/TSX Composite Index		
Advancers	Decliners	Unchanged
0	0	0

S&P/TSX Composite Index			
Top 10 Index Contributors		Top 10 Index Detractors	
Constituent	Index Contribution	Constituent	Index Contribution

S&P/TSX Composite Index			
Top 10 Advancers		Top 10 Decliners	
Constituent	Return	Constituent	Return
	%		%

S&P/TSX Composite Index				
Sector	# of Index Constituents	Weight	Market Cap (\$B)	Index Contribution
Telecommunication Services	4	%	\$98.97	
Information Technology	12	%	\$56.43	
Consumer Staples	11	%	\$77.03	
Utilities	14	%	\$59.16	
Industrials	26	%	\$183.23	
Health Care	5	%	\$12.37	
Materials	56	%	\$273.10	
Financials	27	%	\$737.04	
Consumer Discretionary	22	%	\$103.22	
Energy	50	%	\$410.72	
S&P/TSX Composite Index	227	%	\$2,011.29	

S&P/TSX Composite Index - Sectors Returns



This report is published by TSX Inc. TSX Inc. does not guarantee either the completeness or the accuracy of this information. The information contained in this report is provided for informational purposes only and you agree not to rely upon the information contained in this report for any trading, business or financial purpose. These sheets are printed in Canada and issued by TSX Inc. under the express condition, to which everyone receiving or making use thereof assents, that no liability shall be incurred by TSX Inc. or its affiliated companies or any other vendor or donor, including, without limitation, for reliance on or for any errors or inaccuracies in this report. Neither TMX Group Limited, TSX Inc., nor any of their affiliated companies, guarantees the completeness of the information contained in this document and are not responsible for any errors or omission in or your use of, or reliance on, the information. This publication is under copyright. © 2015 TSX Inc. All rights reserved. Do not copy, distribute, sell or modify this publication without the prior written consent of TSX Inc. www.tmx.com/trading

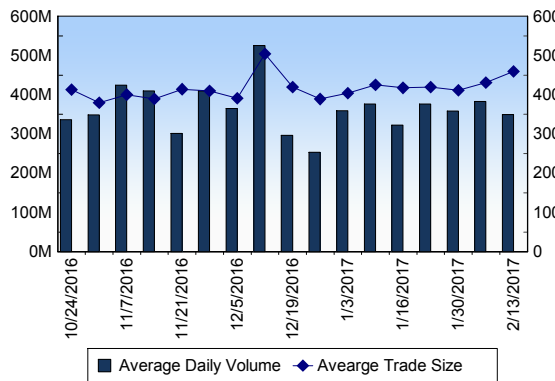
TSX

Daily Volume	349,182,883
Daily Value	\$5,356,906,694
Daily Trades	759,867
Daily Symbols Traded	1,874

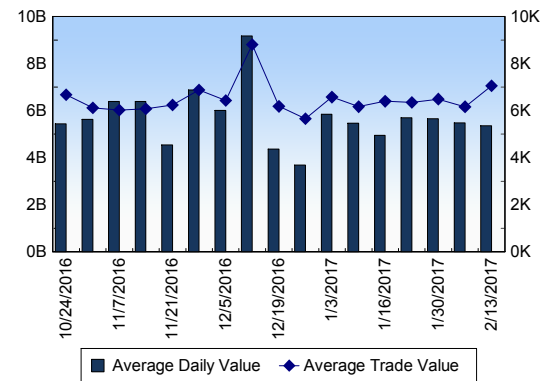
TSX ANONYMOUS TRADING

Daily Volume	133,383,031
Daily Value	\$2,473,803,643
Average Trade Size	425
% TSX Volume	38.20 %

TSX Volume



TSX Value (in Canadian Dollars)



Top 20 TSX Symbols by Volume

Symbol	TSX Volume	TSX Value
MFC	8,914,671	\$219,380,358
WEED	6,676,089	\$86,391,249
NXE	6,153,353	\$25,049,481
BTO	5,890,471	\$25,757,610
FT	5,815,448	\$1,571,525
UEX	4,898,053	\$1,744,842
IVN	4,454,696	\$20,928,852
LEX	4,404,978	\$1,322,356
NGD	4,278,650	\$17,126,605
FM	4,076,759	\$70,277,992
K	3,735,618	\$19,478,525
PDN	3,279,605	\$554,962
LUN	3,170,016	\$27,886,596
ECA	3,084,004	\$51,071,324
BTE	3,068,683	\$15,513,328
BKI	2,969,265	\$375,471
NDM	2,846,995	\$12,037,302
ABX	2,827,196	\$71,605,969
RNX	2,822,595	\$1,082,979
TV	2,799,717	\$3,907,998

Top 20 TSX Symbols by Value

Symbol	TSX Volume	TSX Value
RY	2,496,984	\$242,945,130
MFC	8,914,671	\$219,380,358
TD	2,692,217	\$184,414,072
BNS	2,113,367	\$170,250,093
CM	1,307,190	\$151,001,321
BMO	1,456,837	\$146,711,549
ENB	2,413,104	\$135,727,554
SLF	2,250,102	\$117,345,577
TRP	1,522,880	\$94,806,596
CNR	962,126	\$89,592,493
WEED	6,676,089	\$86,391,249
SU	2,073,906	\$86,179,729
TECK.B	2,310,688	\$77,490,974
ABX	2,827,196	\$71,605,969
FM	4,076,759	\$70,277,992
POT	2,655,227	\$66,975,466
BCE	1,056,958	\$61,507,579
AGU	402,930	\$56,257,703
CP	269,505	\$52,714,534
ECA	3,084,004	\$51,071,324

ETF Trading

Daily Volume	22,216,944	Average Trade Value	\$9,783
Daily Value	\$348,452,116	Average Trade Size	624
# Trades	35,617	# of ETFs Traded	458

Top 10 ETFs by TSX Volume

Symbol	Market Volume	Market Value
HOU	2,425,053	\$19,910,217
HNU	2,320,922	\$19,250,255
XIU	2,065,226	\$48,368,807
HOD	1,759,069	\$16,802,082
HGU	1,233,492	\$24,508,316
HGD	1,210,814	\$9,254,039
HND	1,187,019	\$13,980,031
XEG	671,669	\$8,631,186
XGD	653,394	\$9,214,701
HVU	582,098	\$5,647,824

Top 10 ETFs by TSX Value

Symbol	Market Volume	Market Value
XIU	2,065,226	\$48,368,807
HGU	1,233,492	\$24,508,316
HOU	2,425,053	\$19,910,217
HNU	2,320,922	\$19,250,255
HOD	1,759,069	\$16,802,082
HND	1,187,019	\$13,980,031
VFV	180,628	\$9,775,733
HGD	1,210,814	\$9,254,039
XGD	653,394	\$9,214,701
HXU	272,134	\$9,213,006

Block Trades

824

Non Block Trades

759,043

Top 5 Block Trade Brokers by Volume

Broker	TSX Block Volume
NATIONAL BANK FINANCIAL	13,039,400
GOLDMAN SACHS CANADA I	11,863,000
TD SECURITIES INC.	9,814,300
CIBC WORLD MARKETS INC.	5,522,900
CORMARK SECURITIES INC.	3,759,200

Top 5 Block Trade Symbols by Volume

Symbol	TSX Block Volume
MFC	5,416,600
NXE	2,852,100
CFP	2,026,000
SLF	1,400,300
NGD	1,203,700

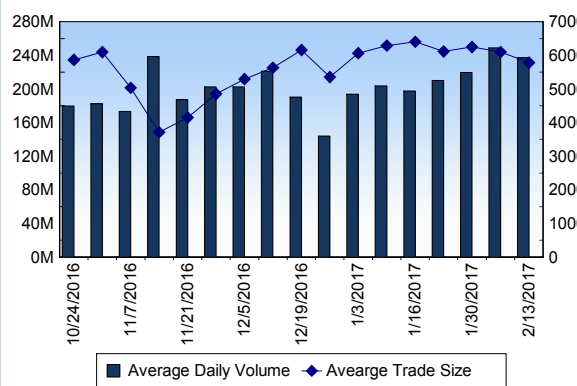
TSXV

Daily Volume	237,178,295
Daily Value	\$96,524,688
Daily Trades	41,048
Daily Symbols Traded	1,200

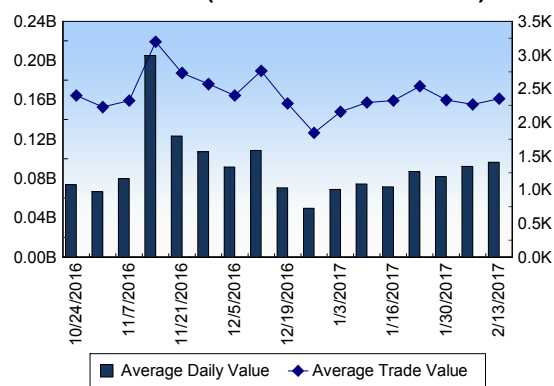
TSXV ANONYMOUS TRADING

Daily Volume	87,144,738
Daily Value	\$32,057,751
Average Trade Size	6,437
% TSXV Volume	36.74%

TSXV Volume



TSXV Value (in Canadian Dollars)



Top 20 TSXV Symbols by Volume

Symbol	TSXV Volume	TSXV Value
SUP	7,013,012	\$482,194
BBI	5,873,903	\$3,956,253
FGD	4,561,186	\$3,332,838
SEK	4,323,025	\$337,882
ZAD	4,072,871	\$465,567
WKG	3,975,627	\$119,369
SSA	3,891,400	\$78,488
RTI	3,749,810	\$2,619,443
AXA	3,181,281	\$38,811
JEN.H	3,161,079	\$95,854
CUZ	2,787,270	\$557,212
SCG	2,725,556	\$562,835
MXL	2,558,759	\$605,680
GXU	2,403,918	\$1,015,935
ACB	2,298,982	\$5,904,341
APH	2,212,396	\$12,589,323
BFD	2,173,851	\$351,703
CE	2,049,625	\$82,771
RLV	1,854,636	\$276,241
TGV	1,815,400	\$96,257

Top 20 TSXV Symbols by Value

Symbol	TSXV Volume	TSXV Value
APH	2,212,396	\$12,589,323
ACB	2,298,982	\$5,904,341
BBI	5,873,903	\$3,956,253
MJN	1,499,311	\$3,497,984
FGD	4,561,186	\$3,332,838
OGI	1,102,032	\$2,934,080
RTI	3,749,810	\$2,619,443
GPY	1,018,037	\$1,917,345
EMC	520,286	\$1,856,257
FF	1,671,418	\$1,528,024
PEO	325,900	\$1,417,703
NLC	1,008,589	\$1,409,394
GSV	350,272	\$1,284,925
EMH	938,919	\$1,260,030
BUS	471,796	\$1,070,698
KEK	691,258	\$1,027,210
GXU	2,403,918	\$1,015,935
RUF.UN	93,475	\$838,369
ICG	925,681	\$759,555
SSP	1,188,560	\$736,041

Dark TSX/TSXV Trading

Volume	10,719,170	Daily Trades	31,132
Value	225,359,709	Daily Symbols Traded	1,096