



February 14, 2017

For more information, email trading_sales@tsx.com
 Visit our blog at <http://exchange.tmx.com/>

Indices	February 14 Close	Previous Close	Change	% Change
S&P/TSX Composite Index	15,786.03			%
S&P/TSX 60 Index	931.38			%
S&P/TSX Venture Composite	835.32			%
S&P/TSX Completion Index	992.89			%
S&P/TSX Smallcap Index	692.75			%

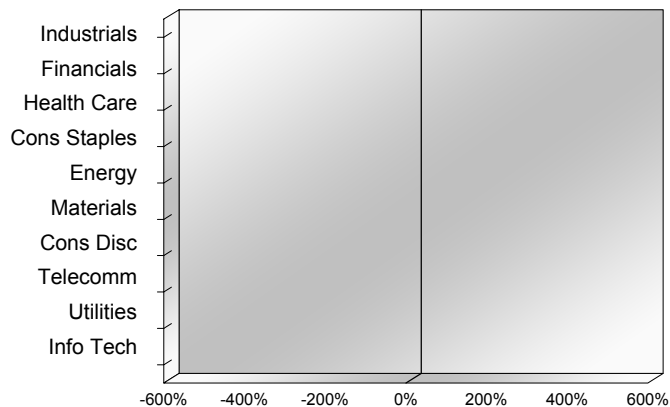
S&P/TSX Composite Index		
Advancers	Decliners	Unchanged
0	0	0

S&P/TSX Composite Index			
Top 10 Index Contributors		Top 10 Index Detractors	
Constituent	Index Contribution	Constituent	Index Contribution

S&P/TSX Composite Index			
Top 10 Advancers		Top 10 Decliners	
Constituent	Return	Constituent	Return
	%		%

S&P/TSX Composite Index				
Sector	# of Index Constituents	Weight	Market Cap (\$B)	Index Contribution
Industrials	26	%	\$183.29	
Financials	27	%	\$739.00	
Health Care	5	%	\$12.78	
Consumer Staples	11	%	\$76.78	
Energy	50	%	\$413.30	
Materials	56	%	\$272.51	
Consumer Discretionary	22	%	\$103.96	
Telecommunication Services	4	%	\$98.78	
Utilities	14	%	\$58.67	
Information Technology	12	%	\$56.38	
S&P/TSX Composite Index	227	%	\$2,015.45	

S&P/TSX Composite Index - Sectors Returns



This report is published by TSX Inc. TSX Inc. does not guarantee either the completeness or the accuracy of this information. The information contained in this report is provided for informational purposes only and you agree not to rely upon the information contained in this report for any trading, business or financial purpose. These sheets are printed in Canada and issued by TSX Inc. under the express condition, to which everyone receiving or making use thereof assents, that no liability shall be incurred by TSX Inc. or its affiliated companies or any other vendor or donor, including, without limitation, for reliance on or for any errors or inaccuracies in this report. Neither TMX Group Limited, TSX Inc., nor any of their affiliated companies, guarantees the completeness of the information contained in this document and are not responsible for any errors or omission in or your use of, or reliance on, the information. This publication is under copyright. © 2015 TSX Inc. All rights reserved. Do not copy, distribute, sell or modify this publication without the prior written consent of TSX Inc. www.tmx.com/trading

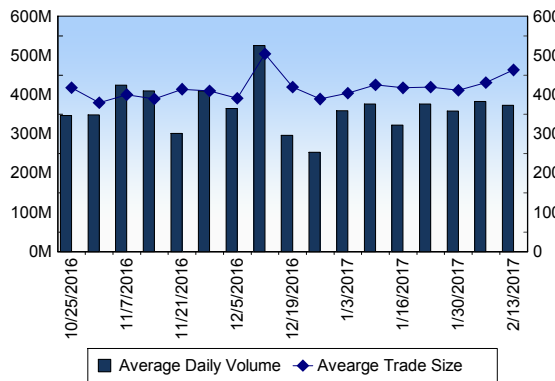
TSX

Daily Volume	396,251,286
Daily Value	\$5,747,385,900
Daily Trades	849,600
Daily Symbols Traded	1,890

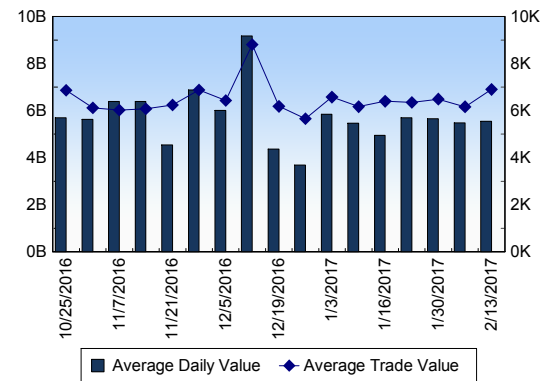
TSX ANONYMOUS TRADING

Daily Volume	136,032,643
Daily Value	\$2,214,472,220
Average Trade Size	409
% TSX Volume	34.33 %

TSX Volume



TSX Value (in Canadian Dollars)



Top 20 TSX Symbols by Volume

Symbol	TSX Volume	TSX Value
NDM	17,810,751	\$57,354,580
BTO	9,230,121	\$40,569,933
WEED	8,649,948	\$105,972,076
BBD.B	7,411,492	\$18,697,612
UEX	5,562,705	\$2,215,786
YRI	5,262,370	\$23,607,771
K	4,677,648	\$24,196,270
NGD	4,082,587	\$16,513,702
MFC	3,978,437	\$98,902,928
FT	3,969,672	\$1,237,756
ECA	3,842,780	\$64,007,427
OGC	3,755,223	\$15,754,412
BNS	3,642,900	\$293,966,431
MEG	3,561,514	\$23,584,657
CS	3,496,668	\$6,052,503
ATH	3,457,813	\$6,275,447
IVN	3,435,285	\$16,116,804
MGA	3,426,798	\$1,055,761
BTE	3,380,483	\$17,616,704
ABX	3,308,573	\$83,415,172

Top 20 TSX Symbols by Value

Symbol	TSX Volume	TSX Value
BNS	3,642,900	\$293,966,431
RY	2,208,300	\$215,034,257
TD	3,044,955	\$208,678,160
TRP	2,247,597	\$139,890,128
SLF	2,113,692	\$110,505,895
SU	2,612,125	\$109,105,274
ENB	1,898,893	\$107,198,840
WEED	8,649,948	\$105,972,076
MFC	3,978,437	\$98,902,928
BMO	967,987	\$97,355,323
CP	485,367	\$95,332,841
ABX	3,308,573	\$83,415,172
TECK.B	2,464,797	\$80,399,486
BCE	1,371,949	\$79,514,864
CM	677,724	\$78,451,826
CNR	805,765	\$75,172,737
CNQ	1,877,131	\$74,008,775
ECA	3,842,780	\$64,007,427
XIU	2,528,115	\$59,204,829
NDM	17,810,751	\$57,354,580

ETF Trading

Daily Volume	26,397,235	Average Trade Value	\$10,646
Daily Value	\$406,591,539	Average Trade Size	691
# Trades	38,191	# of ETFs Traded	452

Top 10 ETFs by TSX Volume

Symbol	Market Volume	Market Value
HOU	3,106,241	\$25,867,762
XIU	2,528,115	\$59,204,829
HNU	2,230,721	\$18,043,274
HGD	2,071,106	\$16,040,616
HGU	1,983,048	\$38,906,969
HOD	1,817,824	\$17,145,633
HND	1,501,430	\$18,083,969
XEG	1,165,962	\$15,072,930
XGD	1,025,814	\$14,384,155
HVU	959,124	\$8,790,245

Top 10 ETFs by TSX Value

Symbol	Market Volume	Market Value
XIU	2,528,115	\$59,204,829
HGU	1,983,048	\$38,906,969
HOU	3,106,241	\$25,867,762
HND	1,501,430	\$18,083,969
HNU	2,230,721	\$18,043,274
HOD	1,817,824	\$17,145,633
HGD	2,071,106	\$16,040,616
XEG	1,165,962	\$15,072,930
XGD	1,025,814	\$14,384,155
ZSP	289,189	\$9,713,499

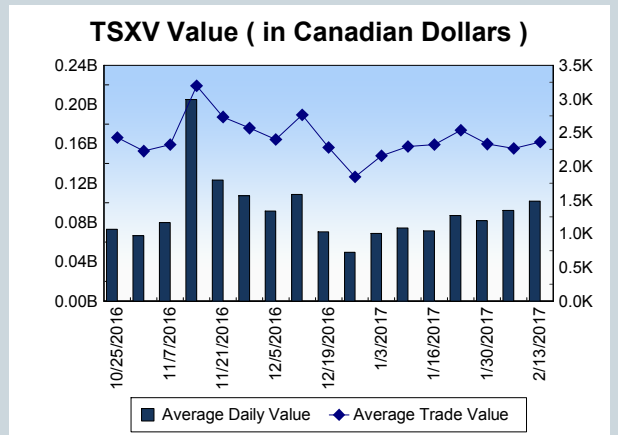
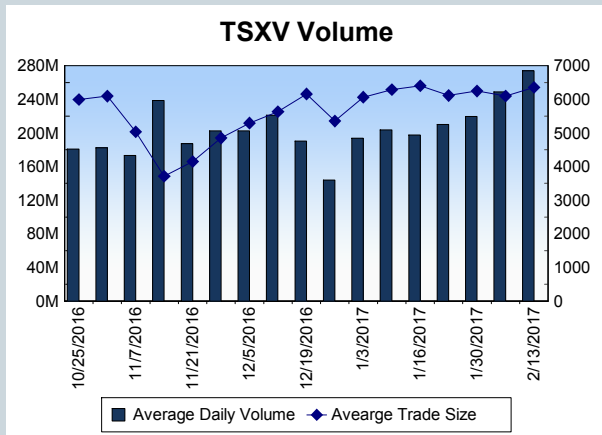
Block Trades	Non Block Trades
1,085	848,515

Top 5 Block Trade Brokers by Volume	
Broker	TSX Block Volume
CIBC WORLD MARKETS INC.	11,021,700
TD SECURITIES INC.	10,454,100
NATIONAL BANK FINANCIAL	7,655,300
BMO NESBITT BURNS INC.	6,922,000
GOLDMAN SACHS CANADA I	5,835,200

Top 5 Block Trade Symbols by Volume	
Symbol	TSX Block Volume
BNS	2,738,900
HSE	2,090,700
BBD.B	1,585,400
TD	1,349,200
WEF	1,342,500

TSXV	
Daily Volume	310,780,267
Daily Value	\$107,157,079
Daily Trades	45,184
Daily Symbols Traded	1,209

TSXV ANONYMOUS TRADING	
Daily Volume	110,230,708
Daily Value	\$36,036,766
Average Trade Size	7,225
% TSXV Volume	35.47%



Top 20 TSXV Symbols by Volume		
Symbol	TSXV Volume	TSXV Value
LTX	22,992,778	\$207,092
MMS	22,422,518	\$2,878,203
CUZ	9,845,358	\$2,414,798
PNN	8,926,432	\$534,417
SEK	8,196,549	\$747,893
VVN	7,908,214	\$697,846
LI	5,697,923	\$970,681
FGD	5,642,206	\$4,334,183
KALY	3,915,691	\$2,003,250
MN	3,620,749	\$845,999
TEK	3,073,450	\$147,655
RTI	2,882,204	\$2,055,689
SCG	2,855,093	\$585,543
ZAD	2,570,690	\$296,091
SRJ	2,548,900	\$69,128
APH	2,517,913	\$14,921,114
JEN.H	2,182,236	\$84,267
SUP	2,028,238	\$136,255
CPO	2,020,780	\$282,979
CXB	1,996,250	\$507,785

Top 20 TSXV Symbols by Value		
Symbol	TSXV Volume	TSXV Value
APH	2,517,913	\$14,921,114
ACB	1,914,183	\$4,927,344
FGD	5,642,206	\$4,334,183
OGI	1,303,500	\$3,373,643
GSV	865,400	\$3,114,296
MMS	22,422,518	\$2,878,203
CUZ	9,845,358	\$2,414,798
MJN	979,894	\$2,406,066
RTI	2,882,204	\$2,055,689
KALY	3,915,691	\$2,003,250
SNS	1,169,179	\$1,937,318
GPY	862,988	\$1,669,561
EMC	454,225	\$1,641,759
JTR	1,013,722	\$1,539,138
FF	1,504,631	\$1,422,834
BCM	403,496	\$1,167,875
BUS	476,799	\$1,064,397
EMH	771,990	\$1,010,790
LI	5,697,923	\$970,681
TNC	306,750	\$956,412

Dark TSX/TSXV Trading			
Volume	11,183,610	Daily Trades	30,384
Value	213,988,841	Daily Symbols Traded	1,145