



February 24, 2017

For more information, email trading_sales@tsx.com
 Visit our blog at <http://exchange.tmx.com/>

Indices	February 24 Close	Previous Close	Change	% Change
S&P/TSX Composite Index	15,533.47			%
S&P/TSX 60 Index	914.95			%
S&P/TSX Venture Composite	836.27			%
S&P/TSX Completion Index	981.90			%
S&P/TSX Smallcap Index	673.86			%

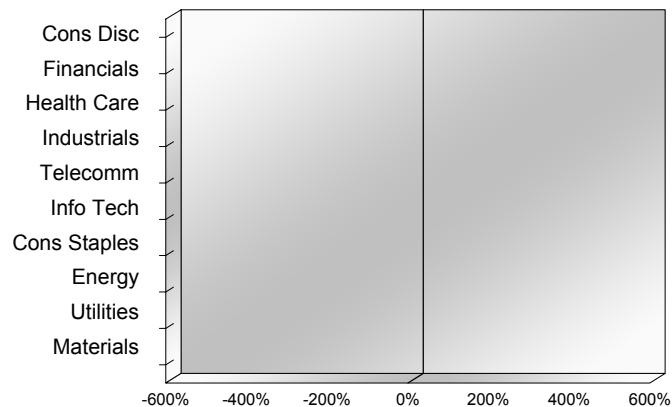
S&P/TSX Composite Index		
Advancers	Decliners	Unchanged
0	0	0

S&P/TSX Composite Index			
Top 10 Index Contributors		Top 10 Index Detractors	
Constituent	Index Contribution	Constituent	Index Contribution

S&P/TSX Composite Index			
Top 10 Advancers		Top 10 Decliners	
Constituent	Return	Constituent	Return
	%		%

S&P/TSX Composite Index				
Sector	# of Index Constituents	Weight	Market Cap (\$B)	Index Contribution
Consumer Discretionary	22	%	\$103.87	
Financials	27	%	\$732.62	
Health Care	5	%	\$12.78	
Industrials	26	%	\$182.44	
Telecommunication Services	4	%	\$99.42	
Information Technology	12	%	\$56.41	
Consumer Staples	11	%	\$76.78	
Energy	50	%	\$399.41	
Utilities	14	%	\$59.05	
Materials	56	%	\$258.28	
S&P/TSX Composite Index	227	%	\$1,981.06	

S&P/TSX Composite Index - Sectors Returns



This report is published by TSX Inc. TSX Inc. does not guarantee either the completeness or the accuracy of this information. The information contained in this report is provided for informational purposes only and you agree not to rely upon the information contained in this report for any trading, business or financial purpose. These sheets are printed in Canada and issued by TSX Inc. under the express condition, to which everyone receiving or making use thereof assents, that no liability shall be incurred by TSX Inc. or its affiliated companies or any other vendor or donor, including, without limitation, for reliance on or for any errors or inaccuracies in this report. Neither TMX Group Limited, TSX Inc., nor any of their affiliated companies, guarantees the completeness of the information contained in this document and are not responsible for any errors or omission in or your use of, or reliance on, the information. This publication is under copyright. © 2015 TSX Inc. All rights reserved. Do not copy, distribute, sell or modify this publication without the prior written consent of TSX Inc. www.tmx.com/trading

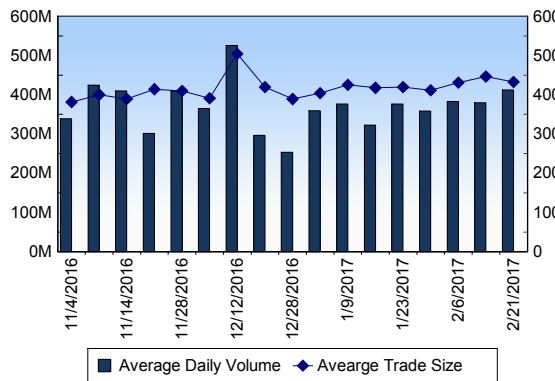
TSX

Daily Volume	424,456,704
Daily Value	\$7,773,183,913
Daily Trades	1,049,630
Daily Symbols Traded	1,911

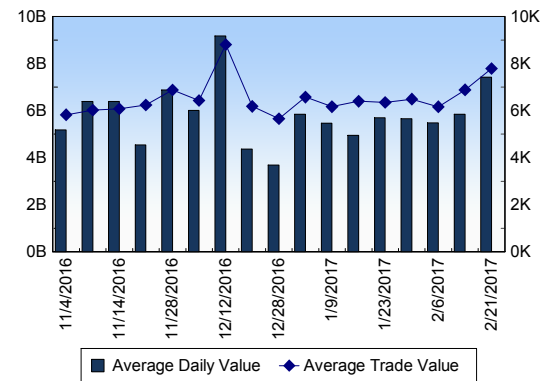
TSX ANONYMOUS TRADING

Daily Volume	144,097,799
Daily Value	\$2,806,228,297
Average Trade Size	327
% TSX Volume	33.95 %

TSX Volume



TSX Value (in Canadian Dollars)



Top 20 TSX Symbols by Volume

Symbol	TSX Volume	TSX Value
ENB	12,806,220	\$696,226,651
BBD.B	9,613,627	\$23,344,802
YRI	7,741,553	\$28,386,521
IVN	7,295,788	\$31,554,497
MFC	6,385,169	\$152,955,561
BTO	6,147,730	\$27,739,068
K	6,009,236	\$30,174,558
XIU	5,804,802	\$133,405,611
NDM	5,566,439	\$11,582,003
ECA	5,211,757	\$76,961,815
SAU	5,166,070	\$133,902
KAT	5,159,425	\$2,364,312
WEED	4,882,213	\$56,591,109
POT	4,695,417	\$109,751,684
ELD	4,255,274	\$18,680,070
AR	4,024,328	\$9,497,079
NSU	3,882,190	\$13,414,972
MEG	3,816,942	\$26,738,670
TRP	3,725,161	\$227,141,125
RY	3,696,474	\$358,785,458

Top 20 TSX Symbols by Value

Symbol	TSX Volume	TSX Value
ENB	12,806,220	\$696,226,651
RY	3,696,474	\$358,785,458
TD	3,659,849	\$254,054,779
TRP	3,725,161	\$227,141,125
BMO	1,927,202	\$193,348,106
BCE	3,124,679	\$181,965,497
BNS	2,237,019	\$180,075,415
CM	1,453,339	\$172,149,624
MFC	6,385,169	\$152,955,561
SU	3,498,886	\$145,595,717
XIU	5,804,802	\$133,405,611
CNR	1,385,164	\$128,003,628
MG	2,092,424	\$117,420,404
POT	4,695,417	\$109,751,684
CP	532,569	\$103,531,197
CNQ	2,566,653	\$96,845,752
SLF	1,934,593	\$93,435,524
BAM.A	1,740,774	\$82,847,399
ECA	5,211,757	\$76,961,815
NA	1,300,655	\$75,364,905

ETF Trading

Daily Volume	32,944,478	Average Trade Value	\$11,621
Daily Value	\$573,817,582	Average Trade Size	667
# Trades	49,378	# of ETFs Traded	465

Top 10 ETFs by TSX Volume

Symbol	Market Volume	Market Value
XIU	5,804,802	\$133,405,611
HND	2,976,786	\$41,636,809
HNU	2,075,231	\$13,945,554
HGU	1,748,546	\$32,759,235
XEG	1,655,103	\$20,790,790
HGD	1,584,312	\$12,797,487
HOD	1,508,949	\$14,083,424
HOU	1,462,617	\$12,262,963
HVU	1,377,485	\$14,307,978
HXD	1,194,046	\$7,966,081

Top 10 ETFs by TSX Value

Symbol	Market Volume	Market Value
XIU	5,804,802	\$133,405,611
HND	2,976,786	\$41,636,809
HGU	1,748,546	\$32,759,235
ZEB	1,127,910	\$32,140,810
HXU	889,219	\$29,366,007
XFN	573,823	\$21,170,359
XEG	1,655,103	\$20,790,790
HVU	1,377,485	\$14,307,978
HXT	458,492	\$14,302,847
HOD	1,508,949	\$14,083,424

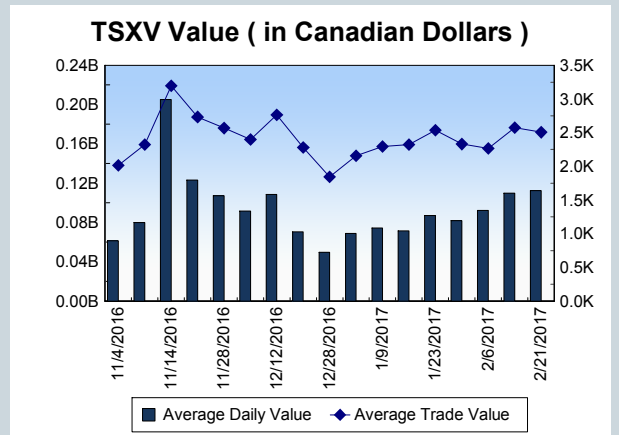
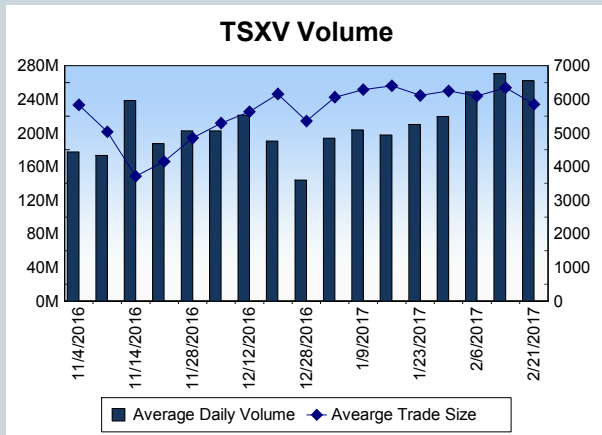
Block Trades	Non Block Trades
1,104	1,048,526

Top 5 Block Trade Brokers by Volume	
Broker	TSX Block Volume
NATIONAL BANK FINANCIAL	15,476,400
TD SECURITIES INC.	10,869,300
CIBC WORLD MARKETS INC.	10,381,900
SOCIETE GENERALE CAPITA	6,349,500
CORMARK SECURITIES INC.	4,272,100

Top 5 Block Trade Symbols by Volume	
Symbol	TSX Block Volume
POT	2,821,300
ENB	2,698,200
MEG	2,042,700
BCE	1,940,200
XIU	1,800,600

TSXV	
Daily Volume	241,293,002
Daily Value	\$102,695,447
Daily Trades	41,227
Daily Symbols Traded	1,229

TSXV ANONYMOUS TRADING	
Daily Volume	73,307,569
Daily Value	\$31,211,620
Average Trade Size	5,703
% TSXV Volume	30.38%



Top 20 TSXV Symbols by Volume		
Symbol	TSXV Volume	TSXV Value
DGO	21,520,434	\$2,905,109
AZX	8,922,734	\$477,859
RVV	8,101,980	\$3,040,140
ACB	5,069,712	\$13,062,780
PHM	3,915,073	\$644,089
PAM	3,232,077	\$396,522
ATE	2,963,856	\$776,742
BBI	2,880,785	\$1,903,713
CGP	2,628,200	\$761,720
CXV	2,603,990	\$225,579
FGD	2,394,845	\$2,081,246
MMS	2,093,930	\$275,619
RHT	2,053,976	\$256,669
TGX	2,039,800	\$10,199
CRO	2,031,000	\$30,465
APH	1,841,299	\$11,444,378
MOO	1,821,700	\$45,678
GXL	1,487,021	\$197,042
MGW	1,425,610	\$927,479
CUZ	1,401,877	\$390,405

Top 20 TSXV Symbols by Value		
Symbol	TSXV Volume	TSXV Value
ACB	5,069,712	\$13,062,780
APH	1,841,299	\$11,444,378
MJN	1,274,054	\$3,622,622
RVV	8,101,980	\$3,040,140
DGO	21,520,434	\$2,905,109
OGI	811,924	\$2,109,362
FGD	2,394,845	\$2,081,246
TNC	617,066	\$2,030,148
GSV	575,626	\$2,030,013
BBI	2,880,785	\$1,903,713
RUF.UN	148,054	\$1,332,551
FF	1,243,706	\$1,331,179
EMH	906,734	\$1,201,255
EMC	319,112	\$1,146,735
RTI	1,287,058	\$1,059,900
MGW	1,425,610	\$927,479
BUS	428,023	\$909,838
LIX	429,423	\$842,713
NXO	429,472	\$778,997
ATE	2,963,856	\$776,742

Dark TSX/TSXV Trading			
Volume	14,917,780	Daily Trades	45,197
Value	366,022,874	Daily Symbols Traded	1,112