



February 28, 2017

For more information, email trading_sales@tsx.com
 Visit our blog at <http://exchange.tmx.com/>

Indices	February 28 Close	Previous Close	Change	% Change
S&P/TSX Composite Index	15,399.24			%
S&P/TSX 60 Index	907.57			%
S&P/TSX Venture Composite	817.22			%
S&P/TSX Completion Index	971.82			%
S&P/TSX Smallcap Index	660.11			%

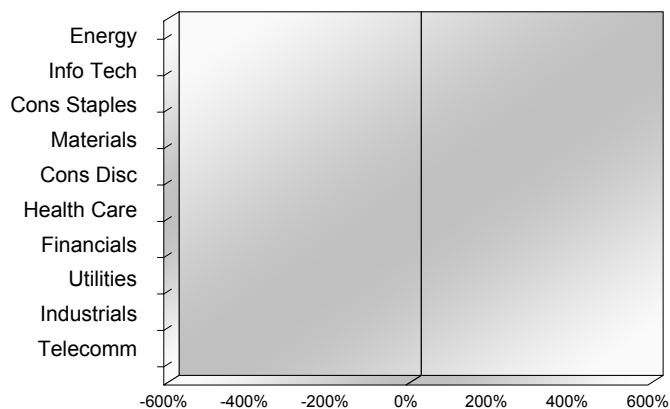
S&P/TSX Composite Index		
Advancers	Decliners	Unchanged
0	0	0

S&P/TSX Composite Index			
Top 10 Index Contributors		Top 10 Index Detractors	
Constituent	Index Contribution	Constituent	Index Contribution

S&P/TSX Composite Index			
Top 10 Advancers		Top 10 Decliners	
Constituent	Return	Constituent	Return
	%		%

S&P/TSX Composite Index				
Sector	# of Index Constituents	Weight	Market Cap (\$B)	Index Contribution
Energy	50	%	\$440.18	
Information Technology	12	%	\$56.09	
Consumer Staples	11	%	\$75.56	
Materials	56	%	\$249.66	
Consumer Discretionary	22	%	\$103.42	
Health Care	5	%	\$12.12	
Financials	27	%	\$725.07	
Utilities	14	%	\$58.68	
Industrials	26	%	\$182.31	
Telecommunication Services	4	%	\$98.88	
S&P/TSX Composite Index	227	%	\$2,001.98	

S&P/TSX Composite Index - Sectors Returns



This report is published by TSX Inc. TSX Inc. does not guarantee either the completeness or the accuracy of this information. The information contained in this report is provided for informational purposes only and you agree not to rely upon the information contained in this report for any trading, business or financial purpose. These sheets are printed in Canada and issued by TSX Inc. under the express condition, to which everyone receiving or making use thereof assents, that no liability shall be incurred by TSX Inc. or its affiliated companies or any other vendor or donor, including, without limitation, for reliance on or for any errors or inaccuracies in this report. Neither TMX Group Limited, TSX Inc., nor any of their affiliated companies, guarantees the completeness of the information contained in this document and are not responsible for any errors or omission in or your use of, or reliance on, the information. This publication is under copyright. © 2015 TSX Inc. All rights reserved. Do not copy, distribute, sell or modify this publication without the prior written consent of TSX Inc. www.tmx.com/trading

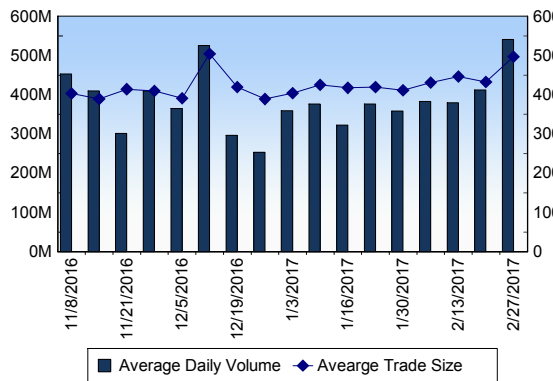
TSX

Daily Volume	466,745,840
Daily Value	\$10,200,963,736
Daily Trades	1,084,232
Daily Symbols Traded	1,918

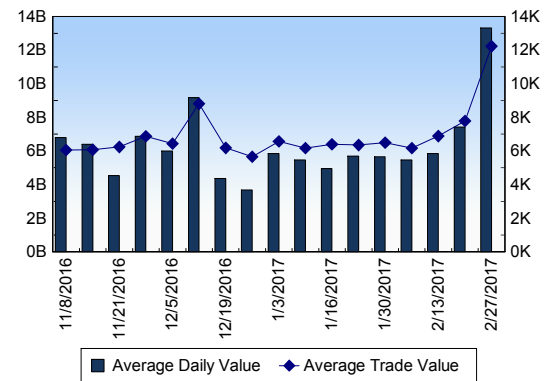
TSX ANONYMOUS TRADING

Daily Volume	158,694,049
Daily Value	\$3,722,279,632
Average Trade Size	355
% TSX Volume	34.00 %

TSX Volume



TSX Value (in Canadian Dollars)



Top 20 TSX Symbols by Volume

Symbol	TSX Volume	TSX Value
ENB	33,632,131	\$1,876,022,917
BTO	8,659,449	\$35,787,779
XIU	7,655,093	\$174,508,267
YRI	7,324,287	\$27,200,205
IVN	6,994,287	\$27,306,921
K	6,983,051	\$33,015,537
BBD.B	6,573,870	\$15,258,518
SPE	5,845,795	\$16,271,853
MFC	5,559,822	\$132,603,782
ABX	5,521,932	\$137,043,442
SU	5,491,905	\$227,508,082
TD	5,442,299	\$373,852,071
ECA	5,054,470	\$74,265,286
G	4,731,805	\$100,446,691
ELD	4,602,038	\$19,038,726
BNS	4,190,920	\$325,131,909
HOU	4,117,071	\$33,848,676
IMG	4,087,247	\$21,539,781
RY	3,888,738	\$376,715,959
NDM	3,758,932	\$7,730,526

Top 20 TSX Symbols by Value

Symbol	TSX Volume	TSX Value
ENB	33,632,131	\$1,876,022,917
RY	3,888,738	\$376,715,959
TD	5,442,299	\$373,852,071
CM	3,085,146	\$360,639,305
BNS	4,190,920	\$325,131,909
BMO	2,374,624	\$239,365,144
SU	5,491,905	\$227,508,082
CNR	2,036,923	\$188,996,606
XIU	7,655,093	\$174,508,267
TRP	2,693,033	\$164,746,750
RCI.B	2,491,611	\$139,176,120
ABX	5,521,932	\$137,043,442
MFC	5,559,822	\$132,603,782
CNQ	3,482,869	\$132,586,592
SLF	2,257,283	\$109,370,998
CP	546,588	\$106,983,736
G	4,731,805	\$100,446,691
ATD.B	1,663,602	\$98,758,256
BCE	1,658,490	\$96,358,975
BAM.A	1,996,096	\$95,687,254

ETF Trading

Daily Volume	35,075,914	Average Trade Value	\$12,848
Daily Value	\$585,629,104	Average Trade Size	770
# Trades	45,580	# of ETFs Traded	465

Top 10 ETFs by TSX Volume

Symbol	Market Volume	Market Value
XIU	7,655,093	\$174,508,267
HOU	4,117,071	\$33,848,676
HGD	2,700,440	\$23,605,004
HND	2,127,785	\$29,693,313
HGU	1,936,355	\$33,062,862
HNU	1,829,929	\$12,195,249
HOD	1,697,689	\$16,132,288
XEG	1,140,853	\$14,258,668
XGD	1,049,059	\$13,747,512
HVU	1,022,346	\$10,368,227

Top 10 ETFs by TSX Value

Symbol	Market Volume	Market Value
XIU	7,655,093	\$174,508,267
HOU	4,117,071	\$33,848,676
HGU	1,936,355	\$33,062,862
HND	2,127,785	\$29,693,313
HGD	2,700,440	\$23,605,004
HXT	605,589	\$18,802,593
ZEB	634,168	\$17,864,130
HXU	514,530	\$16,786,204
HOD	1,697,689	\$16,132,288
XEG	1,140,853	\$14,258,668

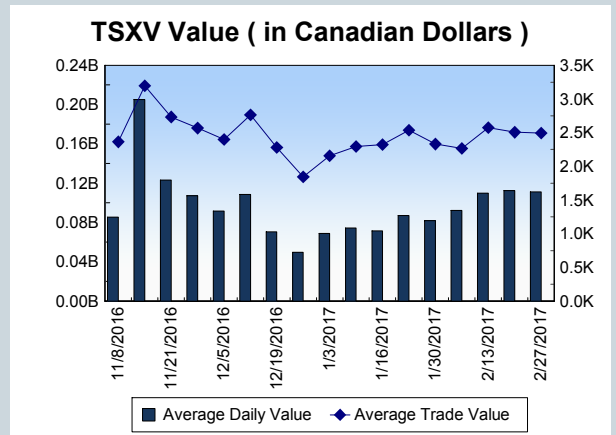
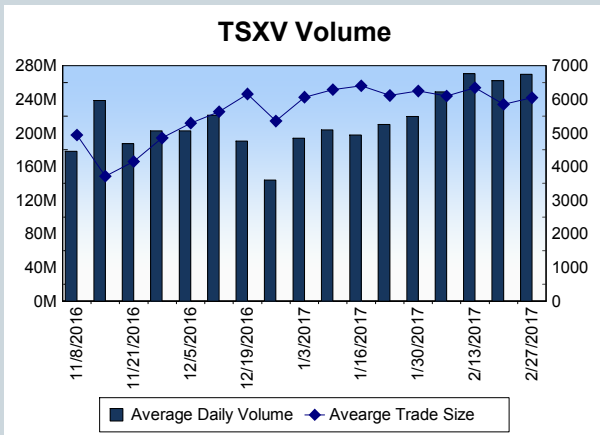
Block Trades	Non Block Trades
2,267	1,081,965

Top 5 Block Trade Brokers by Volume	
Broker	TSX Block Volume
TD SECURITIES INC.	21,033,000
RBC CAPITAL MARKETS	16,121,700
MERRILL LYNCH CANADA LT	12,450,600
SCOTIA CAPITAL INC.	10,329,100
UBS SECURITIES CANADA IN	10,058,100

Top 5 Block Trade Symbols by Volume	
Symbol	TSX Block Volume
ENB	23,479,200
XIU	5,078,000
SPE	2,383,000
TD	2,209,400
SU	2,129,500

TSXV	
Daily Volume	283,662,476
Daily Value	\$115,742,776
Daily Trades	46,074
Daily Symbols Traded	1,196

TSXV ANONYMOUS TRADING	
Daily Volume	107,726,093
Daily Value	\$40,879,264
Average Trade Size	6,510
% TSXV Volume	37.98%



Top 20 TSXV Symbols by Volume		
Symbol	TSXV Volume	TSXV Value
SJL	44,779,212	\$6,024,188
DGO	9,219,572	\$2,020,153
BBI	8,007,330	\$4,620,517
TON	6,989,700	\$34,949
PHM	4,375,856	\$851,257
PAM	3,662,819	\$546,393
SRJ	3,638,451	\$127,321
RVV	3,331,637	\$1,045,682
APH	3,094,320	\$21,001,149
FMS	2,796,532	\$312,262
BBI.WT	2,776,045	\$936,719
NSP	2,736,411	\$878,572
ACB	2,595,069	\$6,752,508
SEK	2,079,997	\$163,089
OGI	2,009,864	\$5,148,224
MTO	1,941,350	\$135,895
EGM	1,932,000	\$748,402
EPO	1,879,857	\$201,098
JEN.H	1,868,133	\$172,375
TGV	1,782,600	\$100,503

Top 20 TSXV Symbols by Value		
Symbol	TSXV Volume	TSXV Value
APH	3,094,320	\$21,001,149
ACB	2,595,069	\$6,752,508
SJL	44,779,212	\$6,024,188
OGI	2,009,864	\$5,148,224
BBI	8,007,330	\$4,620,517
MJN	1,155,604	\$3,560,679
GSV	722,264	\$2,546,499
BUS	1,026,426	\$2,412,777
DGO	9,219,572	\$2,020,153
EMC	566,056	\$1,980,680
RUF.UN	183,471	\$1,668,253
TNC	480,174	\$1,578,314
FF	1,626,908	\$1,485,680
LSC	833,353	\$1,224,263
RVV	3,331,637	\$1,045,682
GOLD	534,704	\$974,264
BBI.WT	2,776,045	\$936,719
NSP	2,736,411	\$878,572
ICG	1,110,368	\$867,749
PHM	4,375,856	\$851,257

Dark TSX/TSXV Trading			
Volume	14,799,190	Daily Trades	46,108
Value	362,756,035	Daily Symbols Traded	1,144