



March 28, 2017

For more information, email trading_sales@tsx.com
 Visit our blog at <http://exchange.tmx.com/>

Indices	March 28 Close	Previous Close	Change	% Change
S&P/TSX Composite Index	15,598.57			%
S&P/TSX 60 Index	920.39			%
S&P/TSX Venture Composite	804.12			%
S&P/TSX Completion Index	980.90			%
S&P/TSX Smallcap Index	659.93			%

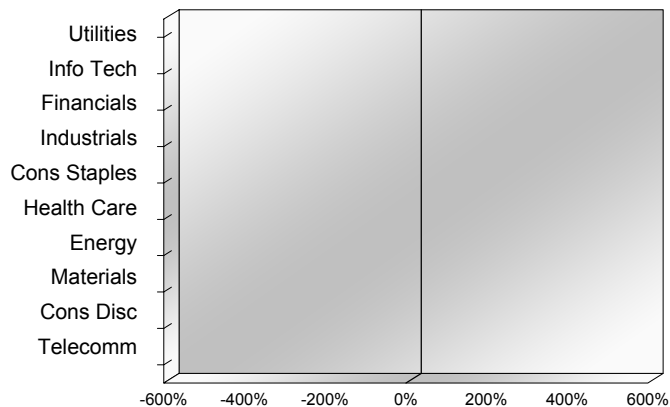
S&P/TSX Composite Index		
Advancers	Decliners	Unchanged
0	0	0

S&P/TSX Composite Index			
Top 10 Index Contributors		Top 10 Index Detractors	
Constituent	Index Contribution	Constituent	Index Contribution

S&P/TSX Composite Index			
Top 10 Advancers		Top 10 Decliners	
Constituent	Return	Constituent	Return
	%		%

S&P/TSX Composite Index				
Sector	# of Index Constituents	Weight	Market Cap (\$B)	Index Contribution
Utilities	15	%	\$63.86	
Information Technology	12	%	\$59.34	
Financials	27	%	\$726.61	
Industrials	26	%	\$188.05	
Consumer Staples	11	%	\$78.60	
Health Care	6	%	\$12.33	
Energy	51	%	\$449.54	
Materials	56	%	\$252.44	
Consumer Discretionary	22	%	\$105.65	
Telecommunication Services	3	%	\$99.26	
S&P/TSX Composite Index	229	%	\$2,035.67	

S&P/TSX Composite Index - Sectors Returns



This report is published by TSX Inc. TSX Inc. does not guarantee either the completeness or the accuracy of this information. The information contained in this report is provided for informational purposes only and you agree not to rely upon the information contained in this report for any trading, business or financial purpose. These sheets are printed in Canada and issued by TSX Inc. under the express condition, to which everyone receiving or making use thereof assents, that no liability shall be incurred by TSX Inc. or its affiliated companies or any other vendor or donor, including, without limitation, for reliance on or for any errors or inaccuracies in this report. Neither TMX Group Limited, TSX Inc., nor any of their affiliated companies, guarantees the completeness of the information contained in this document and are not responsible for any errors or omission in or your use of, or reliance on, the information. This publication is under copyright. © 2015 TSX Inc. All rights reserved. Do not copy, distribute, sell or modify this publication without the prior written consent of TSX Inc. www.tmx.com/trading

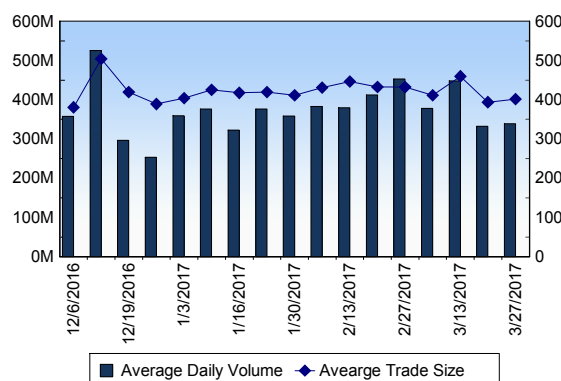
TSX

Daily Volume	366,767,699
Daily Value	\$6,069,762,252
Daily Trades	860,094
Daily Symbols Traded	1,877

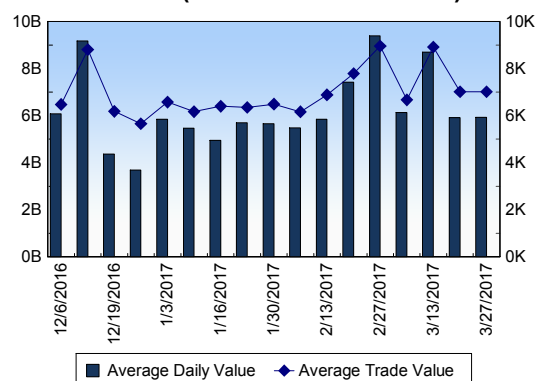
TSX ANONYMOUS TRADING

Daily Volume	145,594,532
Daily Value	\$2,453,376,092
Average Trade Size	401
% TSX Volume	39.70 %

TSX Volume



TSX Value (in Canadian Dollars)



Top 20 TSX Symbols by Volume

Symbol	TSX Volume	TSX Value
LUN	16,713,353	\$123,402,991
YRI	7,088,285	\$26,503,411
BTO	6,684,641	\$25,589,990
G	5,675,143	\$115,276,553
WEED	4,988,064	\$54,708,110
K	4,951,242	\$22,708,932
SVY	4,721,060	\$9,292,604
TD	4,462,235	\$293,220,418
ECA	4,253,645	\$62,062,898
BTE	4,170,867	\$18,385,326
MFC	4,011,812	\$94,910,191
XRC	3,946,055	\$9,575,098
GUY	3,815,240	\$26,426,960
XIU	3,794,264	\$87,648,313
CR	3,753,379	\$18,179,092
TV	3,590,137	\$4,399,694
CNQ	3,470,561	\$148,451,490
WCP	3,347,596	\$34,170,784
OSK.WT	3,335,285	\$298,982
AAR.UN	3,319,609	\$19,977,420

Top 20 TSX Symbols by Value

Symbol	TSX Volume	TSX Value
TD	4,462,235	\$293,220,418
RY	2,352,468	\$230,130,564
BNS	2,534,748	\$200,073,533
ENB	2,870,174	\$160,082,750
CNQ	3,470,561	\$148,451,490
LUN	16,713,353	\$123,402,991
CM	1,035,436	\$121,290,812
G	5,675,143	\$115,276,553
CNR	1,077,725	\$106,221,125
SU	2,442,249	\$100,791,903
BMO	987,961	\$98,697,989
MFC	4,011,812	\$94,910,191
XIU	3,794,264	\$87,648,313
BCE	1,367,075	\$80,538,268
ABX	3,040,632	\$78,365,417
ENF	2,291,510	\$76,212,567
TRP	1,041,954	\$65,049,140
CSU.DB	539,000	\$62,370,050
ECA	4,253,645	\$62,062,898
NA	1,068,329	\$60,249,137

ETF Trading

Daily Volume	28,781,921	Average Trade Value	\$12,157
Daily Value	\$462,654,508	Average Trade Size	756
# Trades	38,056	# of ETFs Traded	454

Top 10 ETFs by TSX Volume

Symbol	Market Volume	Market Value
XIU	3,794,264	\$87,648,313
XEG	2,988,065	\$37,933,732
HGD	2,661,126	\$22,126,042
HGU	2,158,097	\$37,054,668
HOU	1,866,994	\$12,176,302
HOD	1,797,839	\$20,974,872
HNU	1,231,608	\$10,115,531
HVU	1,064,251	\$8,093,626
HND	1,020,606	\$11,157,732
HXU	842,934	\$28,014,006

Top 10 ETFs by TSX Value

Symbol	Market Volume	Market Value
XIU	3,794,264	\$87,648,313
XEG	2,988,065	\$37,933,732
HGU	2,158,097	\$37,054,668
HXU	842,934	\$28,014,006
HGD	2,661,126	\$22,126,042
HOD	1,797,839	\$20,974,872
ZEB	657,925	\$18,391,568
HOU	1,866,994	\$12,176,302
HND	1,020,606	\$11,157,732
XFN	299,415	\$10,897,573

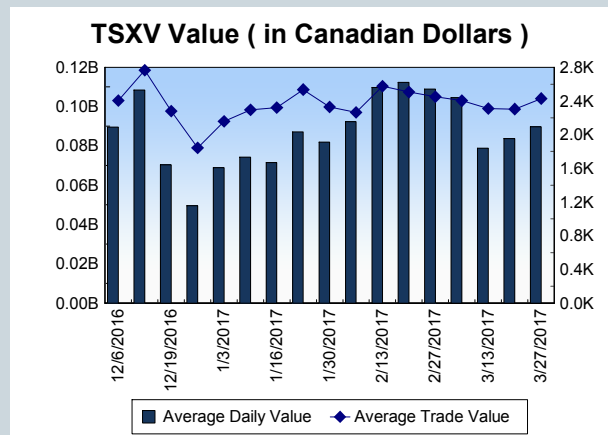
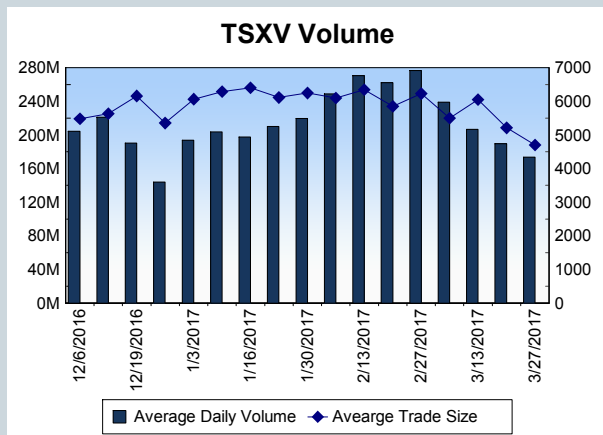
Block Trades	Non Block Trades
1,099	858,995

Top 5 Block Trade Brokers by Volume	
Broker	TSX Block Volume
CIBC WORLD MARKETS INC.	37,023,100
TD SECURITIES INC.	9,988,700
RBC CAPITAL MARKETS	4,963,800
NATIONAL BANK FINANCIAL	4,354,900
CANACCORD GENUITY CORI	4,279,700

Top 5 Block Trade Symbols by Volume	
Symbol	TSX Block Volume
LUN	14,364,000
SVY	4,395,300
GUY	3,000,000
CR	2,590,400
PVG	2,554,800

TSXV	
Daily Volume	178,416,278
Daily Value	\$94,937,719
Daily Trades	39,223
Daily Symbols Traded	1,177

TSXV ANONYMOUS TRADING	
Daily Volume	67,221,222
Daily Value	\$36,081,297
Average Trade Size	4,595
% TSXV Volume	37.68%



Top 20 TSXV Symbols by Volume		
Symbol	TSXV Volume	TSXV Value
DYA	9,560,568	\$9,328,749
ACB	6,995,855	\$18,285,132
AN	4,589,399	\$847,573
ITT	2,531,972	\$290,605
ROI	2,518,610	\$89,491
ION	2,396,908	\$373,835
BBI	2,313,679	\$1,174,352
MQX	2,293,656	\$236,926
AGG	2,280,000	\$160,410
GXU	1,996,232	\$468,824
QNC	1,828,692	\$286,968
OGI	1,822,153	\$4,687,223
FF	1,733,870	\$1,463,079
LTX	1,718,063	\$15,680
SEK	1,672,237	\$122,797
ICG	1,641,052	\$1,437,692
PHM	1,558,878	\$379,010
MFX	1,528,313	\$41,139
FGD	1,450,188	\$1,292,494
PST	1,440,902	\$157,054

Top 20 TSXV Symbols by Value		
Symbol	TSXV Volume	TSXV Value
ACB	6,995,855	\$18,285,132
DYA	9,560,568	\$9,328,749
OGI	1,822,153	\$4,687,223
BUS	1,264,916	\$4,264,768
MJN	1,404,376	\$4,240,597
NXO	1,099,398	\$2,979,584
THCX	893,067	\$1,685,890
EMC	631,398	\$1,565,143
FF	1,733,870	\$1,463,079
ICG	1,641,052	\$1,437,692
FGD	1,450,188	\$1,292,494
BBI	2,313,679	\$1,174,352
RUF.UN	120,706	\$1,104,493
SVI	470,931	\$953,950
GSV	281,313	\$872,731
AN	4,589,399	\$847,573
EMH	651,814	\$832,263
LIX	496,809	\$724,616
SNS	444,497	\$689,379
PHO	426,480	\$638,446

Dark TSX/TSXV Trading			
Volume	11,814,870	Daily Trades	38,231
Value	262,284,792	Daily Symbols Traded	1,095