



January 24, 2018

For more information, email trading_sales@tsx.com
 Visit our blog at <http://exchange.tmx.com/>

Indices	January 24 Close	Previous Close	Change	% Change
S&P/TSX Composite Index	16,284.21			%
S&P/TSX 60 Index	962.81			%
S&P/TSX Venture Composite	893.59			%
S&P/TSX Completion Index	1,017.82			%
S&P/TSX Smallcap Index	670.30			%

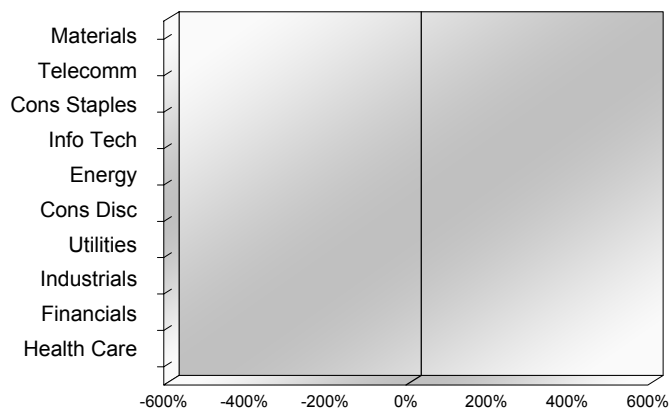
S&P/TSX Composite Index		
Advancers	Decliners	Unchanged
0	0	0

S&P/TSX Composite Index			
Top 10 Index Contributors		Top 10 Index Detractors	
Constituent	Index Contribution	Constituent	Index Contribution

S&P/TSX Composite Index			
Top 10 Advancers		Top 10 Decliners	
Constituent	Return	Constituent	Return
	%		%

S&P/TSX Composite Index				
Sector	# of Index Constituents	Weight	Market Cap (\$B)	Index Contribution
Materials	54	%	\$265.53	
Telecommunication Services	3	%	\$100.80	
Consumer Staples	11	%	\$82.24	
Information Technology	12	%	\$75.51	
Energy	50	%	\$441.13	
Consumer Discretionary	22	%	\$122.61	
Utilities	15	%	\$81.87	
Industrials	27	%	\$208.83	
Financials	27	%	\$783.03	
Health Care	7	%	\$22.54	
S&P/TSX Composite Index	228	%	\$2,184.10	

S&P/TSX Composite Index - Sectors Returns



This report is published by TSX Inc. TSX Inc. does not guarantee either the completeness or the accuracy of this information. The information contained in this report is provided for informational purposes only and you agree not to rely upon the information contained in this report for any trading, business or financial purpose. These sheets are printed in Canada and issued by TSX Inc. under the express condition, to which everyone receiving or making use thereof assents, that no liability shall be incurred by TSX Inc. or its affiliated companies or any other vendor or donor, including, without limitation, for reliance on or for any errors or inaccuracies in this report. Neither TMX Group Limited, TSX Inc., nor any of their affiliated companies, guarantees the completeness of the information contained in this document and are not responsible for any errors or omission in or your use of, or reliance on, the information. This publication is under copyright. © 2015 TSX Inc. All rights reserved. Do not copy, distribute, sell or modify this publication without the prior written consent of TSX Inc. www.tmx.com/trading

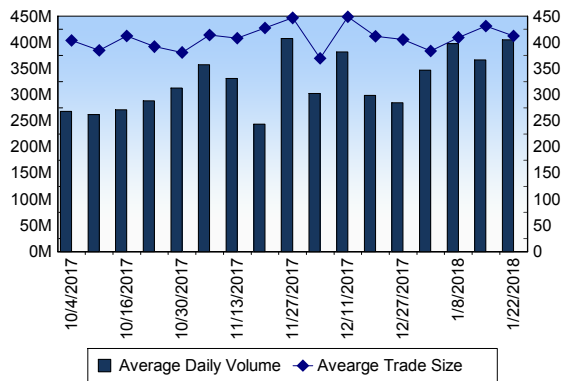
TSX

Daily Volume	430,861,946
Daily Value	\$8,276,050,734
Daily Trades	1,089,107
Daily Symbols Traded	1,915

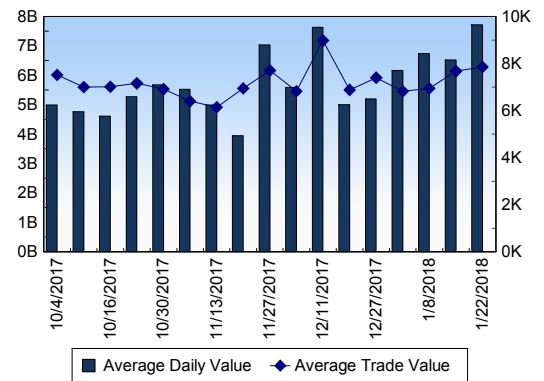
TSX ANONYMOUS TRADING

Daily Volume	136,991,036
Daily Value	\$2,782,690,569
Average Trade Size	337
% TSX Volume	31.79 %

TSX Volume



TSX Value (in Canadian Dollars)



Top 20 TSX Symbols by Volume

Symbol	TSX Volume	TSX Value
ACB	32,635,253	\$477,034,649
S	6,661,612	\$8,647,728
K	6,479,003	\$37,088,972
BTO	6,222,029	\$24,853,139
BBD.B	5,600,927	\$17,608,467
MEG	5,494,824	\$32,609,253
CPG	5,421,530	\$60,123,191
YRI	5,378,306	\$24,672,848
CVE	5,149,563	\$67,692,858
SU	4,884,629	\$225,210,353
WEED	4,772,843	\$168,859,593
BIR	4,547,490	\$16,835,037
RNX	4,381,377	\$1,428,603
NPC	4,376,287	\$8,499,528
APH	4,227,752	\$88,247,440
PD	4,194,095	\$19,545,937
ABX	4,166,025	\$78,133,187
ECA	3,961,454	\$66,840,718
G	3,955,068	\$73,580,425
MFC	3,927,209	\$105,845,693

Top 20 TSX Symbols by Value

Symbol	TSX Volume	TSX Value
ACB	32,635,253	\$477,034,649
RY	3,862,348	\$409,407,019
TD	3,374,673	\$249,745,161
CNR	2,284,703	\$225,824,438
SU	4,884,629	\$225,210,353
BNS	2,292,697	\$187,474,884
CM	1,525,409	\$185,984,324
BMO	1,714,681	\$178,003,811
WEED	4,772,843	\$168,859,593
CNQ	3,508,369	\$156,712,227
ENB	2,898,265	\$141,355,050
TRP	2,374,347	\$140,471,208
CP	513,041	\$117,864,503
BCE	1,954,191	\$111,864,492
RCI.B	1,745,864	\$106,399,994
MFC	3,927,209	\$105,845,693
TECK.B	2,929,881	\$105,055,285
CMED	2,267,637	\$98,192,123
APH	4,227,752	\$88,247,440
AEM	1,382,145	\$83,034,890

ETF Trading

Daily Volume	35,736,748	Average Trade Value	\$10,267
Daily Value	\$680,845,390	Average Trade Size	539
# Trades	66,317	# of ETFs Traded	513

Top 10 ETFs by TSX Volume

Symbol	Market Volume	Market Value
XIU	2,961,194	\$71,908,528
HNU	2,933,485	\$14,412,422
HOU	2,794,437	\$27,380,958
HOD	2,178,759	\$13,324,576
XEG	1,810,251	\$22,623,118
HVU	1,690,002	\$28,480,794
HND	1,646,310	\$19,483,925
HMMJ	1,612,671	\$38,158,029
HGU	1,168,200	\$15,897,263
HSD	952,293	\$3,817,796

Top 10 ETFs by TSX Value

Symbol	Market Volume	Market Value
XIU	2,961,194	\$71,908,528
HMMJ	1,612,671	\$38,158,029
HVU	1,690,002	\$28,480,794
HOU	2,794,437	\$27,380,958
XFN	588,447	\$23,087,795
XEG	1,810,251	\$22,623,118
ZSP	523,022	\$20,164,528
HND	1,646,310	\$19,483,925
ZEB	635,212	\$19,247,942
XUS	392,053	\$17,165,495

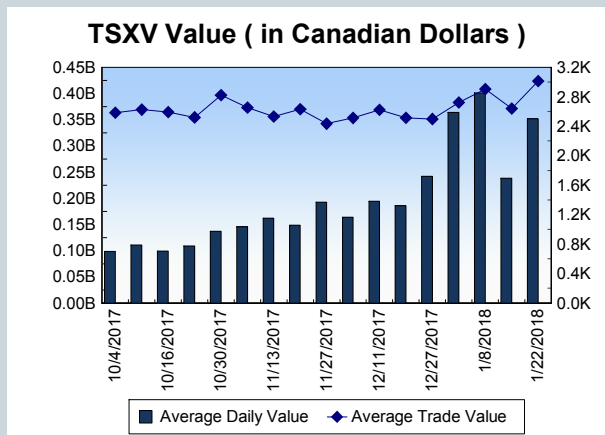
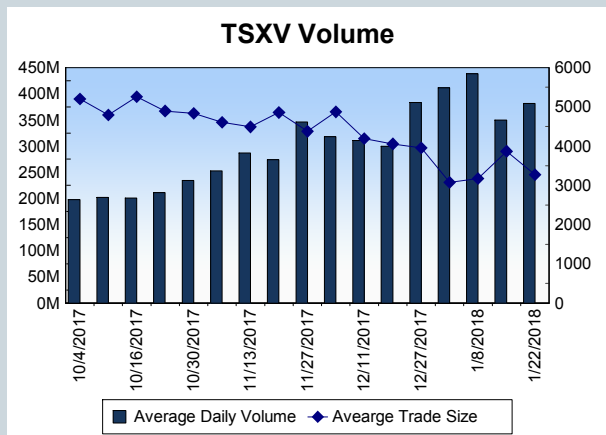
Block Trades	Non Block Trades
1,660	1,087,447

Top 5 Block Trade Brokers by Volume	
Broker	TSX Block Volume
CIBC WORLD MARKETS INC.	15,833,400
NATIONAL BANK FINANCIAL	15,081,600
TD SECURITIES INC.	13,199,100
BMO NESBITT BURNS INC.	7,343,200
CREDIT SUISSE SECURITIES	6,176,800

Top 5 Block Trade Symbols by Volume	
Symbol	TSX Block Volume
S	3,725,200
NPC	3,304,700
MEG	3,241,600
SU	2,461,196
BBD.B	2,315,700

TSXV	
Daily Volume	389,155,288
Daily Value	\$335,870,803
Daily Trades	116,816
Daily Symbols Traded	1,359

TSXV ANONYMOUS TRADING	
Daily Volume	135,540,822
Daily Value	\$94,403,008
Average Trade Size	4,273
% TSXV Volume	34.83%



Top 20 TSXV Symbols by Volume		
Symbol	TSXV Volume	TSXV Value
HIT	39,250,891	\$2,873,904
HIP	30,014,348	\$44,880,859
WKG	8,344,280	\$356,851
NAM	7,485,900	\$906,940
LTV	7,393,929	\$2,218,498
ABCN	7,162,175	\$27,545,021
LG	6,827,428	\$3,819,842
RYU	6,086,629	\$1,587,715
RVL	5,695,133	\$126,353
OGI	5,629,229	\$29,678,549
GLDN	4,783,638	\$668,813
THCX	3,881,597	\$19,109,259
IMH	3,246,162	\$7,901,222
EMH	3,216,310	\$28,036,983
NDVA	3,110,469	\$3,563,333
WMD	3,072,003	\$9,095,013
AUU	3,028,000	\$112,185
DASH	2,978,111	\$1,503,107
CBW	2,821,453	\$6,157,833
FIRE	2,679,761	\$7,112,587

Top 20 TSXV Symbols by Value		
Symbol	TSXV Volume	TSXV Value
HIP	30,014,348	\$44,880,859
OGI	5,629,229	\$29,678,549
EMH	3,216,310	\$28,036,983
ABCN	7,162,175	\$27,545,021
THCX	3,881,597	\$19,109,259
MJN	1,597,229	\$17,818,609
WMD	3,072,003	\$9,095,013
IMH	3,246,162	\$7,901,222
FIRE	2,679,761	\$7,112,587
CBW	2,821,453	\$6,157,833
HVST	2,335,729	\$4,208,086
SCYB	145,854	\$4,175,939
ML	895,855	\$4,162,050
EMC	1,791,369	\$3,903,450
RUF.UN	484,593	\$3,893,455
LG	6,827,428	\$3,819,842
NUU	518,862	\$3,638,643
NDVA	3,110,469	\$3,563,333
RTI	1,683,884	\$3,289,266
HIVE	970,608	\$3,071,238

Dark TSX/TSXV Trading			
Volume	17,287,070	Daily Trades	56,612
Value	386,987,872	Daily Symbols Traded	1,101