



April 2, 2019

For more information, email trading_sales@tsx.com
 Visit our blog at <http://exchange.tmx.com/>

Indices	April 2 Close	Previous Close	Change	% Change
S&P/TSX Composite Index	16,263.87			%
S&P/TSX 60 Index	970.43			%
S&P/TSX Venture Composite	625.70			%
S&P/TSX Completion Index	988.30			%
S&P/TSX Smallcap Index	583.66			%

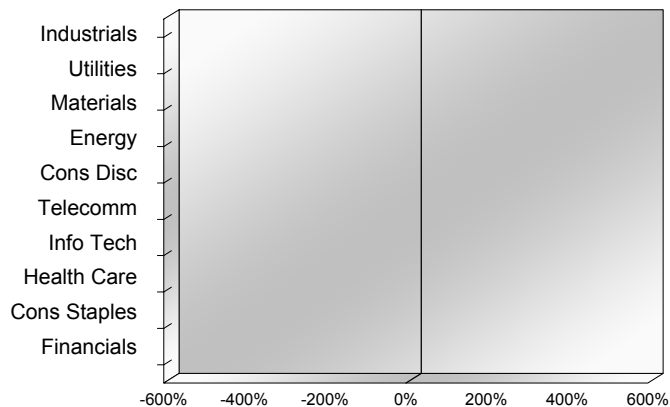
S&P/TSX Composite Index		
Advancers	Decliners	Unchanged
0	0	0

S&P/TSX Composite Index			
Top 10 Index Contributors		Top 10 Index Detractors	
Constituent	Index Contribution	Constituent	Index Contribution

S&P/TSX Composite Index			
Top 10 Advancers		Top 10 Decliners	
Constituent	Return	Constituent	Return
	%		%

S&P/TSX Composite Index				
Sector	# of Index Constituents	Weight	Market Cap (\$B)	Index Contribution
Industrials	30	%	\$250.02	
Utilities	16	%	\$94.78	
Materials	50	%	\$254.54	
Energy	41	%	\$414.61	
Consumer Discretionary	17	%	\$95.16	
Communication Services	7	%	\$131.11	
Information Technology	10	%	\$101.67	
Health Care	11	%	\$50.02	
Consumer Staples	10	%	\$89.35	
Financials	26	%	\$731.72	
S&P/TSX Composite Index	218	%	\$2,212.99	

S&P/TSX Composite Index - Sectors Returns



This report is published by TSX Inc. TSX Inc. does not guarantee either the completeness or the accuracy of this information. The information contained in this report is provided for informational purposes only and you agree not to rely upon the information contained in this report for any trading, business or financial purpose. These sheets are printed in Canada and issued by TSX Inc. under the express condition, to which everyone receiving or making use thereof assents, that no liability shall be incurred by TSX Inc. or its affiliated companies or any other vendor or donor, including, without limitation, for reliance on or for any errors or inaccuracies in this report. Neither TMX Group Limited, TSX Inc., nor any of their affiliated companies, guarantees the completeness of the information contained in this document and are not responsible for any errors or omission in or your use of, or reliance on, the information. This publication is under copyright. © 2015 TSX Inc. All rights reserved. Do not copy, distribute, sell or modify this publication without the prior written consent of TSX Inc. www.tmx.com/trading

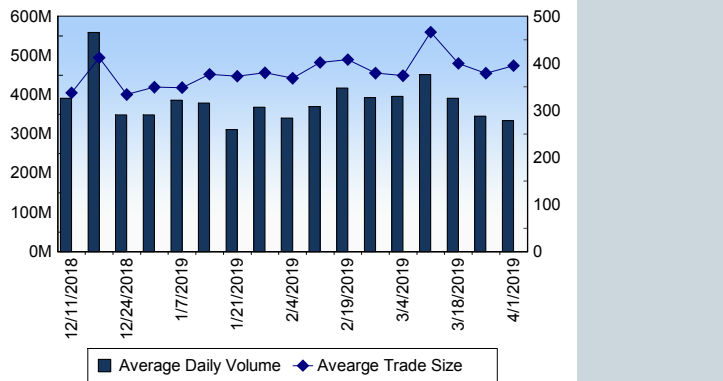
TSX

Daily Volume	286,157,229
Daily Value	\$5,717,659,156
Daily Trades	786,641
Daily Symbols Traded	1,852

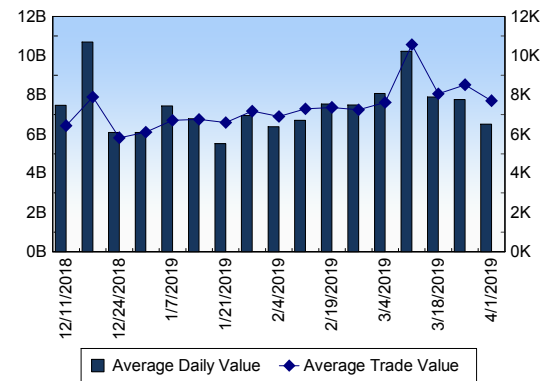
TSX ANONYMOUS TRADING

Daily Volume	110,222,910
Daily Value	\$2,296,862,304
Average Trade Size	296
% TSX Volume	38.52 %

TSX Volume



TSX Value (in Canadian Dollars)



Top 20 TSX Symbols by Volume

Symbol	TSX Volume	TSX Value
ECA	7,894,776	\$76,581,999
ACB	6,672,250	\$80,524,439
PLI	6,445,545	\$1,362,560
BBD.B	5,831,984	\$15,655,422
CPG	4,574,929	\$19,361,671
TD	3,990,728	\$296,199,837
CVE	3,486,293	\$42,323,288
APHA	3,392,321	\$44,894,811
TV	3,387,767	\$1,547,965
MFC	3,116,915	\$72,269,866
ABX	3,062,856	\$55,011,088
MPVD	2,892,102	\$3,414,288
ESN	2,695,402	\$862,863
MEG	2,655,397	\$14,044,754
BTE	2,577,589	\$5,864,693
RY	2,566,881	\$264,105,394
ENB	2,546,107	\$124,241,949
K	2,541,655	\$11,412,050
TRP	2,448,717	\$149,544,586
CNQ	2,391,054	\$88,798,494

Top 20 TSX Symbols by Value

Symbol	TSX Volume	TSX Value
TD	3,990,728	\$296,199,837
RY	2,566,881	\$264,105,394
TRP	2,448,717	\$149,544,586
BNS	1,939,365	\$137,382,837
ENB	2,546,107	\$124,241,949
CNR	908,942	\$109,455,248
SHOP	404,848	\$109,054,491
SU	2,390,559	\$105,271,641
CM	960,572	\$103,623,339
BMO	1,003,274	\$102,290,290
CNQ	2,391,054	\$88,798,494
BCE	1,427,360	\$84,886,014
ACB	6,672,250	\$80,524,439
PPL	1,453,710	\$72,643,648
MFC	3,116,915	\$72,269,866
CP	259,326	\$71,601,108
FNV	721,152	\$71,551,173
ATD.B	900,433	\$71,167,048
WEED	1,233,930	\$70,152,065

ETF Trading

Daily Volume	14,068,355	Average Trade Value	\$9,527
Daily Value	\$228,675,292	Average Trade Size	586
# Trades	24,002	# of ETFs Traded	543

Top 10 ETFs by TSX Volume

Symbol	Market Volume	Market Value
HOD	1,653,735	\$7,790,737
HOU	1,531,621	\$11,956,985
XIU	1,025,269	\$24,991,400
XEG	1,022,153	\$10,198,818
HND	839,180	\$5,498,859
HNU	644,228	\$9,293,756
ZRE	418,599	\$9,859,651
HGU	356,600	\$3,904,836
XGD	298,459	\$3,597,827
HGD	220,779	\$1,731,416

Top 10 ETFs by TSX Value

Symbol	Market Volume	Market Value
XIU	1,025,269	\$24,991,400
HOU	1,531,621	\$11,956,985
XEG	1,022,153	\$10,198,818
ZRE	418,599	\$9,859,651
HNU	644,228	\$9,293,756
HOD	1,653,735	\$7,790,737
HQU	89,026	\$6,062,827
ZEB	209,552	\$5,975,428
XSP	176,038	\$5,631,012
HND	839,180	\$5,498,859

Block Trades

837

Non Block Trades

785,804

Top 5 Block Trade Brokers by Volume

Broker	TSX Block Volume
NATIONAL BANK FINANCIAL	10,342,600
RBC CAPITAL MARKETS	8,470,000
TD SECURITIES INC.	6,264,900
BMO NESBITT BURNS INC.	5,889,400
CIBC WORLD MARKETS INC.	4,167,100

Top 5 Block Trade Symbols by Volume

Symbol	TSX Block Volume
MPVD	2,097,000
TD	1,977,200
ROXG	1,743,500
ECA	1,711,100
TRP	1,284,600

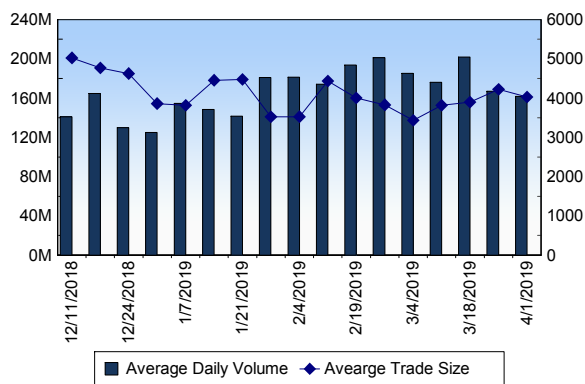
TSXV

Daily Volume	162,528,577
Daily Value	\$91,050,686
Daily Trades	41,689
Daily Symbols Traded	1,068

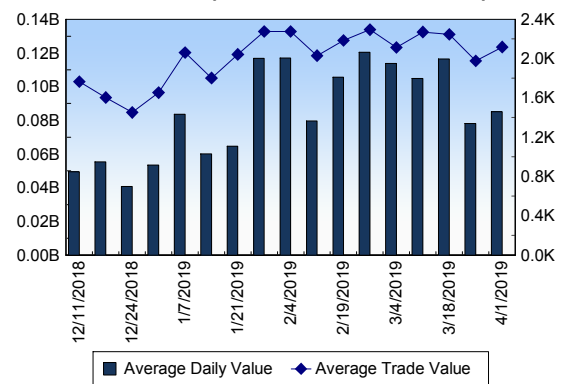
TSXV ANONYMOUS TRADING

Daily Volume	64,955,138
Daily Value	\$36,342,495
Average Trade Size	4,065
% TSXV Volume	39.97%

TSXV Volume



TSXV Value (in Canadian Dollars)



Top 20 TSXV Symbols by Volume

Symbol	TSXV Volume	TSXV Value
SUGR	9,799,669	\$1,820,492
MTU	4,181,500	\$167,475
META	4,062,765	\$3,776,216
DLI	3,818,777	\$593,933
SOLO	3,776,242	\$226,826
HIVE	3,598,883	\$2,221,025
SUGR.WT	2,839,690	\$398,138
ADK	2,317,350	\$81,217
BCT	2,292,435	\$315,696
MMS	2,263,378	\$261,175
CVB	2,181,962	\$850,834
BATT	1,864,750	\$617,649
OGI	1,861,797	\$17,979,409
DASH	1,803,003	\$159,733
GRAT	1,795,655	\$143,127
LG	1,582,798	\$131,553
KHRN	1,546,620	\$5,374,818
LABS	1,514,244	\$5,646,012
GXU	1,482,692	\$237,231
N	1,361,662	\$959,679

Top 20 TSXV Symbols by Value

Symbol	TSXV Volume	TSXV Value
OGI	1,861,797	\$17,979,409
LABS	1,514,244	\$5,646,012
KHRN	1,546,620	\$5,374,818
META	4,062,765	\$3,776,216
EMH	728,246	\$3,012,563
WL	1,041,275	\$2,392,944
HIVE	3,598,883	\$2,221,025
PAT	905,756	\$2,144,192
PCLO	196,352	\$1,896,633
SUGR	9,799,669	\$1,820,492
NRTH	1,107,081	\$1,445,462
GLXY	512,906	\$1,411,885
N	1,361,662	\$959,679
RIV	230,781	\$906,361
CVB	2,181,962	\$850,834
ZENA	269,240	\$832,056
KBLT	185,377	\$799,518
FLT	701,947	\$775,274
WMD	379,821	\$758,541
KNT	485,158	\$726,004

Dark TSX/TSXV Trading

Volume	8,973,080	Daily Trades	30,022
Value	218,553,688	Daily Symbols Traded	983