



April 5, 2019

For more information, email trading_sales@tsx.com
 Visit our blog at <http://exchange.tmx.com/>

Indices	April 5 Close	Previous Close	Change	% Change
S&P/TSX Composite Index	16,396.15			%
S&P/TSX 60 Index	978.21			%
S&P/TSX Venture Composite	629.81			%
S&P/TSX Completion Index	996.73			%
S&P/TSX Smallcap Index	588.92			%

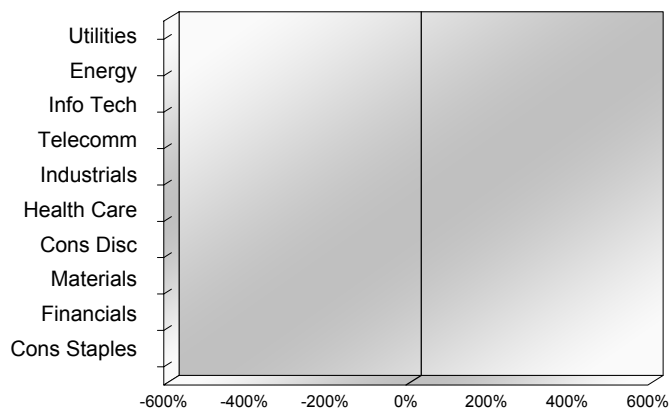
S&P/TSX Composite Index		
Advancers	Decliners	Unchanged
0	0	0

S&P/TSX Composite Index			
Top 10 Index Contributors		Top 10 Index Detractors	
Constituent	Index Contribution	Constituent	Index Contribution

S&P/TSX Composite Index			
Top 10 Advancers		Top 10 Decliners	
Constituent	Return	Constituent	Return
	%		%

S&P/TSX Composite Index				
Sector	# of Index Constituents	Weight	Market Cap (\$B)	Index Contribution
Utilities	16	%	\$95.62	
Energy	41	%	\$420.23	
Information Technology	10	%	\$100.95	
Communication Services	7	%	\$131.08	
Industrials	30	%	\$250.99	
Health Care	11	%	\$50.64	
Consumer Discretionary	17	%	\$96.71	
Materials	50	%	\$258.61	
Financials	26	%	\$737.27	
Consumer Staples	10	%	\$89.99	
S&P/TSX Composite Index	218	%	\$2,232.09	

S&P/TSX Composite Index - Sectors Returns



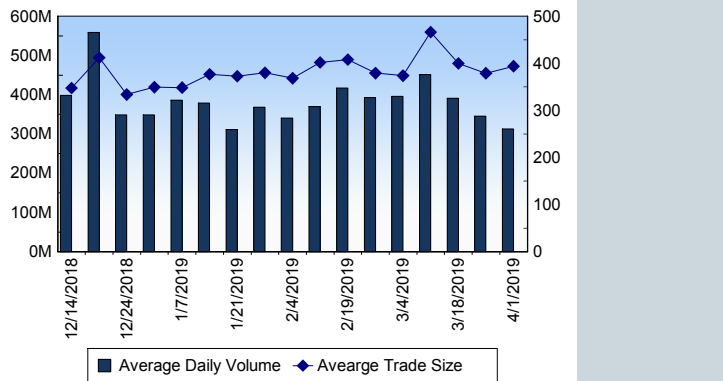
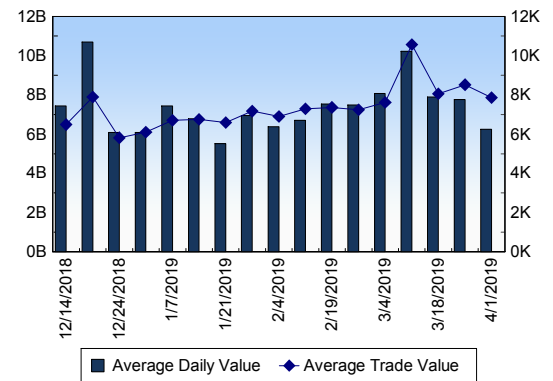
This report is published by TSX Inc. TSX Inc. does not guarantee either the completeness or the accuracy of this information. The information contained in this report is provided for informational purposes only and you agree not to rely upon the information contained in this report for any trading, business or financial purpose. These sheets are printed in Canada and issued by TSX Inc. under the express condition, to which everyone receiving or making use thereof assents, that no liability shall be incurred by TSX Inc. or its affiliated companies or any other vendor or donor, including, without limitation, for reliance on or for any errors or inaccuracies in this report. Neither TMX Group Limited, TSX Inc., nor any of their affiliated companies, guarantees the completeness of the information contained in this document and are not responsible for any errors or omission in or your use of, or reliance on, the information. This publication is under copyright. © 2015 TSX Inc. All rights reserved. Do not copy, distribute, sell or modify this publication without the prior written consent of TSX Inc. www.tmx.com/trading

TSX

Daily Volume	278,612,290
Daily Value	\$5,041,614,187
Daily Trades	713,293
Daily Symbols Traded	1,855

TSX ANONYMOUS TRADING

Daily Volume	105,674,517
Daily Value	\$2,160,565,554
Average Trade Size	327
% TSX Volume	37.93 %

TSX Volume**TSX Value (in Canadian Dollars)****Top 20 TSX Symbols by Volume**

Symbol	TSX Volume	TSX Value
ACB	10,013,002	\$122,841,601
PLI	7,293,613	\$1,331,664
MEG	7,037,638	\$37,957,155
ECA	6,750,252	\$64,225,977
CPG	5,828,159	\$25,228,343
BBD.B	5,384,228	\$14,969,274
BTE	5,371,784	\$12,525,648
CVE	4,389,785	\$54,447,687
TGOD	4,084,750	\$17,931,217
WM	3,796,146	\$1,509,969
CNQ	3,594,405	\$136,641,201
WCP	3,587,428	\$17,891,873
K	2,861,616	\$13,306,545
MFC	2,733,339	\$64,511,108
TCW	2,700,734	\$3,796,511
GVC	2,448,550	\$1,424,042
ENB	2,425,121	\$119,632,093
TVE	2,359,668	\$6,048,261
CJR.B	2,266,309	\$15,355,674
SU	2,156,833	\$95,656,804

Top 20 TSX Symbols by Value

Symbol	TSX Volume	TSX Value
RY	1,761,354	\$182,266,753
CSU.DB	1,208,000	\$153,381,345
TD	2,006,675	\$150,142,507
CNQ	3,594,405	\$136,641,201
CM	1,239,382	\$135,446,074
ACB	10,013,002	\$122,841,601
ENB	2,425,121	\$119,632,093
BNS	1,438,168	\$102,541,801
CNR	843,294	\$101,984,393
SU	2,156,833	\$95,656,804
BMO	874,521	\$89,395,052
TRP	1,313,560	\$80,643,016
CP	248,371	\$69,183,629
WEED	1,169,802	\$68,027,586
NTR	906,616	\$65,823,232
MFC	2,733,339	\$64,511,108
ECA	6,750,252	\$64,225,977
SHOP	239,159	\$62,873,477
BCE	916,376	\$54,727,477
CVE	4,389,785	\$54,447,687

ETF Trading

Daily Volume	15,126,991	Average Trade Value	\$10,247
Daily Value	\$242,426,306	Average Trade Size	639
# Trades	23,658	# of ETFs Traded	567

Top 10 ETFs by TSX Volume

Symbol	Market Volume	Market Value
HOD	1,932,933	\$8,950,847
HOU	1,711,572	\$13,581,127
XIU	1,463,083	\$35,949,338
XEG	1,199,348	\$12,081,336
HNU	574,641	\$8,128,590
HND	541,545	\$3,608,805
HGU	371,171	\$4,192,209
HXD	357,918	\$1,826,388
HGD	268,786	\$2,046,901
HQD	222,562	\$1,251,049

Top 10 ETFs by TSX Value

Symbol	Market Volume	Market Value
XIU	1,463,083	\$35,949,338
HOU	1,711,572	\$13,581,127
XEG	1,199,348	\$12,081,336
HOD	1,932,933	\$8,950,847
HNU	574,641	\$8,128,590
XSP	192,226	\$6,200,444
HXT	171,838	\$6,084,551
HGU	371,171	\$4,192,209
HXU	107,522	\$4,155,987
HND	541,545	\$3,608,805

Block Trades

866

Non Block Trades

712,427

Top 5 Block Trade Brokers by Volume

Broker	TSX Block Volume
TD SECURITIES INC.	7,922,100
CIBC WORLD MARKETS INC.	6,848,000
RBC CAPITAL MARKETS	3,905,000
NATIONAL BANK FINANCIAL	2,168,400
BMO NESBITT BURNS INC.	2,099,670

Top 5 Block Trade Symbols by Volume

Symbol	TSX Block Volume
MEG	1,745,400
GVC	1,677,000
CPG	1,413,400
CSU.DB	1,142,000
ACB	1,083,900

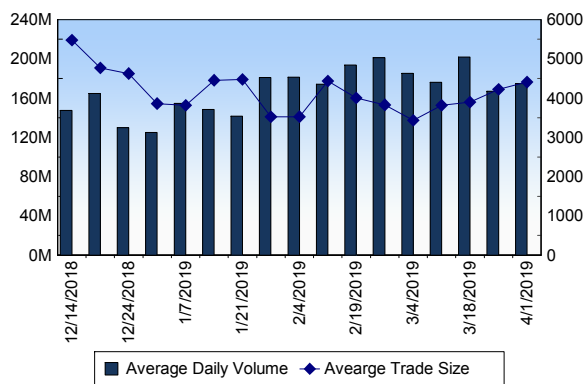
TSXV

Daily Volume	185,543,346
Daily Value	\$82,508,831
Daily Trades	37,993
Daily Symbols Traded	1,120

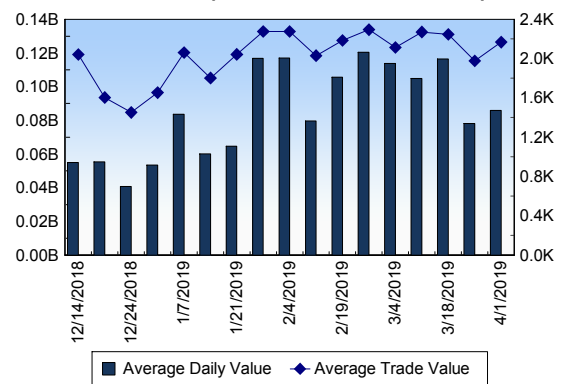
TSXV ANONYMOUS TRADING

Daily Volume	75,468,630
Daily Value	\$36,835,602
Average Trade Size	4,946
% TSXV Volume	40.67%

TSXV Volume



TSXV Value (in Canadian Dollars)



Top 20 TSXV Symbols by Volume

Symbol	TSXV Volume	TSXV Value
SUGR	27,880,893	\$6,680,169
LG	7,574,666	\$1,047,867
SUGR.WT	6,570,476	\$973,323
CRU	4,191,067	\$552,121
MMS	3,813,534	\$471,308
LABS	2,963,868	\$12,076,266
PST	2,792,100	\$147,661
GOOD	2,474,112	\$930,164
EHT	2,321,875	\$93,354
TCI	2,264,356	\$146,179
EBY	2,156,000	\$32,340
NNN	2,002,350	\$136,291
KALY	1,866,878	\$113,515
SOLO	1,849,301	\$114,494
SOIL	1,764,788	\$201,964
KHRN	1,762,777	\$5,984,974
FCC	1,725,117	\$343,382
IMEX	1,672,750	\$41,819
CSTR	1,504,000	\$39,545
CGLD	1,419,000	\$361,575

Top 20 TSXV Symbols by Value

Symbol	TSXV Volume	TSXV Value
LABS	2,963,868	\$12,076,266
SUGR	27,880,893	\$6,680,169
OGI	684,874	\$6,624,249
KHRN	1,762,777	\$5,984,974
PCLO	235,526	\$2,212,701
FLWR	304,270	\$1,876,234
EMH	357,968	\$1,544,769
RIV	359,398	\$1,385,046
PAT	556,926	\$1,260,517
AGB	581,400	\$1,164,251
KNT	707,194	\$1,125,143
LG	7,574,666	\$1,047,867
SUGR.WT	6,570,476	\$973,323
ZENA	342,654	\$943,947
GOOD	2,474,112	\$930,164
META	947,414	\$912,874
CD	266,579	\$868,553
XLY	782,134	\$695,543
ERE.UN	159,865	\$642,984
EQX	502,483	\$615,437

Dark TSX/TSXV Trading

Volume	13,016,470	Daily Trades	30,323
Value	286,666,762	Daily Symbols Traded	978