



April 18, 2019

For more information, email trading_sales@tsx.com
 Visit our blog at <http://exchange.tmx.com/>

Indices	April 18 Close	Previous Close	Change	% Change
S&P/TSX Composite Index	16,612.81			%
S&P/TSX 60 Index	995.29			%
S&P/TSX Venture Composite	609.21			%
S&P/TSX Completion Index	995.32			%
S&P/TSX Smallcap Index	581.83			%

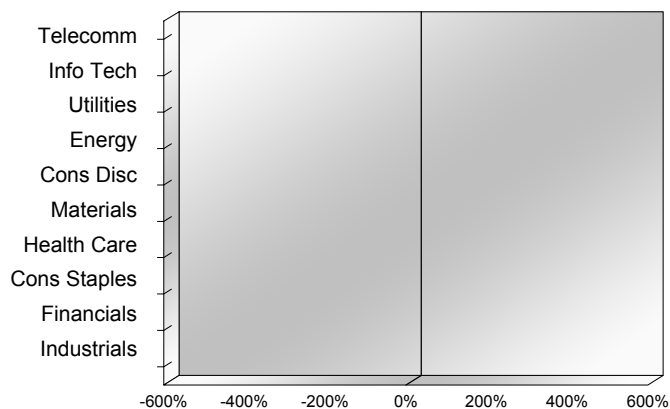
S&P/TSX Composite Index		
Advancers	Decliners	Unchanged
0	0	0

S&P/TSX Composite Index			
Top 10 Index Contributors		Top 10 Index Detractors	
Constituent	Index Contribution	Constituent	Index Contribution

S&P/TSX Composite Index			
Top 10 Advancers		Top 10 Decliners	
Constituent	Return	Constituent	Return
	%		%

S&P/TSX Composite Index				
Sector	# of Index Constituents	Weight	Market Cap (\$B)	Index Contribution
Communication Services	7	%	\$131.00	
Information Technology	10	%	\$104.44	
Utilities	16	%	\$95.70	
Energy	41	%	\$430.22	
Consumer Discretionary	17	%	\$100.89	
Materials	49	%	\$239.11	
Health Care	11	%	\$48.43	
Consumer Staples	10	%	\$89.28	
Financials	26	%	\$754.91	
Industrials	30	%	\$256.60	
S&P/TSX Composite Index	217	%	\$2,250.58	

S&P/TSX Composite Index - Sectors Returns



This report is published by TSX Inc. TSX Inc. does not guarantee either the completeness or the accuracy of this information. The information contained in this report is provided for informational purposes only and you agree not to rely upon the information contained in this report for any trading, business or financial purpose. These sheets are printed in Canada and issued by TSX Inc. under the express condition, to which everyone receiving or making use thereof assents, that no liability shall be incurred by TSX Inc. or its affiliated companies or any other vendor or donor, including, without limitation, for reliance on or for any errors or inaccuracies in this report. Neither TMX Group Limited, TSX Inc., nor any of their affiliated companies, guarantees the completeness of the information contained in this document and are not responsible for any errors or omission in or your use of, or reliance on, the information. This publication is under copyright. © 2015 TSX Inc. All rights reserved. Do not copy, distribute, sell or modify this publication without the prior written consent of TSX Inc. www.tmx.com/trading

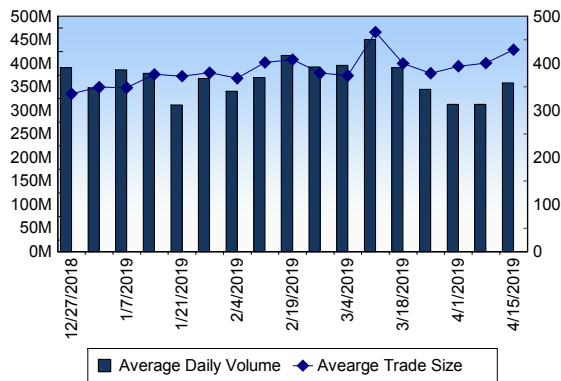
TSX

Daily Volume	353,716,034
Daily Value	\$7,361,605,042
Daily Trades	813,196
Daily Symbols Traded	1,849

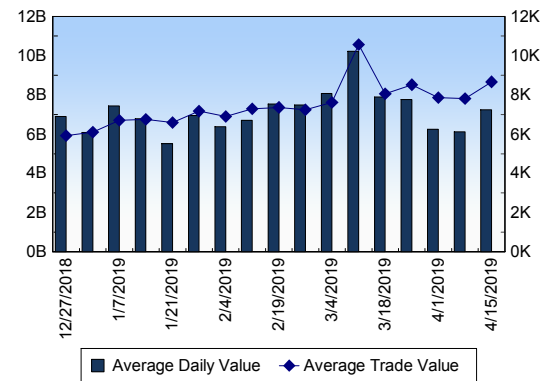
TSX ANONYMOUS TRADING

Daily Volume	137,046,340
Daily Value	\$2,871,705,735
Average Trade Size	398
% TSX Volume	38.74 %

TSX Volume



TSX Value (in Canadian Dollars)



Top 20 TSX Symbols by Volume

Symbol	TSX Volume	TSX Value
G	42,910,636	\$619,948,170
PLI	8,872,060	\$436,197
ACB	8,745,133	\$105,565,303
HEXO	5,957,426	\$54,049,902
APHA	5,893,510	\$60,891,509
CPG	5,826,457	\$31,997,933
BBD.B	5,561,406	\$15,067,588
WEED	5,259,853	\$322,385,684
ECA	5,243,262	\$50,854,893
ENB	5,073,445	\$252,165,436
MFC	4,820,448	\$118,835,376
TRP	4,707,109	\$294,476,065
IPL	4,382,108	\$97,848,974
ABX	4,060,338	\$72,113,140
RY	4,018,758	\$430,189,020
CVE	3,880,008	\$52,465,487
CNQ	3,439,510	\$143,821,807
XIU	3,435,934	\$85,978,477
NMX	3,287,882	\$923,182
K	3,258,278	\$14,214,136

Top 20 TSX Symbols by Value

Symbol	TSX Volume	TSX Value
G	42,910,636	\$619,948,170
RY	4,018,758	\$430,189,020
WEED	5,259,853	\$322,385,684
TRP	4,707,109	\$294,476,065
ENB	5,073,445	\$252,165,436
RCI.B	2,704,960	\$185,483,744
TD	1,993,285	\$150,928,588
BNS	2,012,319	\$147,194,167
CNR	1,148,354	\$144,090,566
CNQ	3,439,510	\$143,821,807
BMO	1,194,797	\$126,069,978
CM	1,128,454	\$125,186,997
MFC	4,820,448	\$118,835,376
SU	2,631,593	\$117,047,607
ACB	8,745,133	\$105,565,303
IPL	4,382,108	\$97,848,974
ATD.B	1,131,527	\$89,416,963
XIU	3,435,934	\$85,978,477
CP	280,779	\$81,286,122
MG	1,066,592	\$80,588,275

ETF Trading

Daily Volume	20,406,167	Average Trade Value	\$13,660
Daily Value	\$382,483,739	Average Trade Size	729
# Trades	28,000	# of ETFs Traded	544

Top 10 ETFs by TSX Volume

Symbol	Market Volume	Market Value
XIU	3,435,934	\$85,978,477
HOD	1,811,511	\$8,096,945
XEG	1,322,316	\$14,032,395
HNU	1,093,524	\$13,633,932
HND	1,022,104	\$7,660,801
HOU	948,801	\$7,758,135
XGD	673,646	\$7,884,813
HGU	490,457	\$5,062,483
XSP	459,416	\$14,881,674
ZEB	409,774	\$12,076,977

Top 10 ETFs by TSX Value

Symbol	Market Volume	Market Value
XIU	3,435,934	\$85,978,477
XSP	459,416	\$14,881,674
XEG	1,322,316	\$14,032,395
HNU	1,093,524	\$13,633,932
HXT	362,460	\$13,070,221
ZEB	409,774	\$12,076,977
XFN	284,981	\$11,068,097
ZSP	253,384	\$10,836,263
VFV	154,984	\$10,681,202
HOD	1,811,511	\$8,096,945

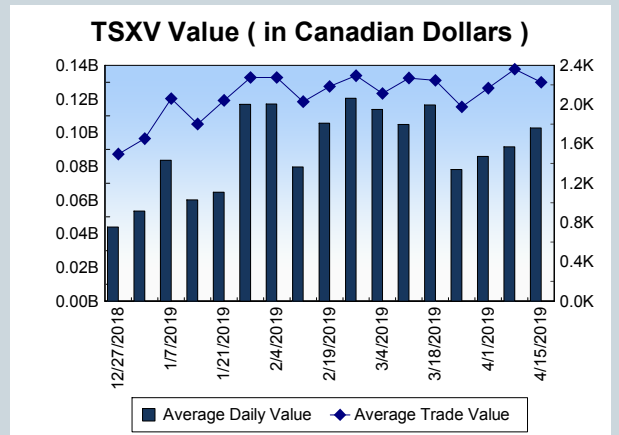
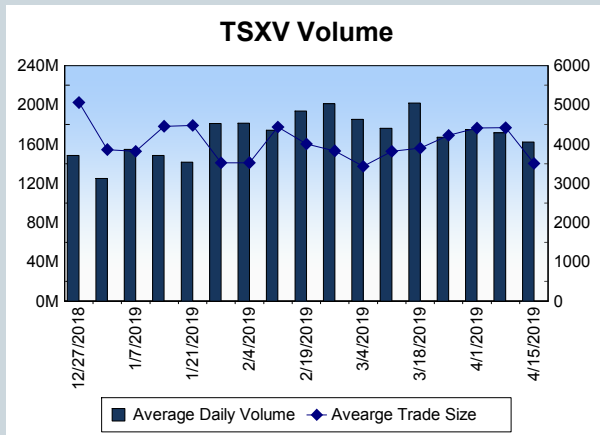
Block Trades	Non Block Trades
1,356	811,840

Top 5 Block Trade Brokers by Volume	
Broker	TSX Block Volume
TD SECURITIES INC.	21,220,400
UBS SECURITIES CANADA IN	12,440,500
BMO NESBITT BURNS INC.	12,438,300
NATIONAL BANK FINANCIAL	9,359,800
RBC CAPITAL MARKETS	9,311,500

Top 5 Block Trade Symbols by Volume	
Symbol	TSX Block Volume
G	32,905,300
IPL	3,373,100
TRP	3,027,000
ENB	2,654,500
MFC	2,473,000

TSXV	
Daily Volume	142,407,983
Daily Value	\$85,792,301
Daily Trades	39,319
Daily Symbols Traded	1,090

TSXV ANONYMOUS TRADING	
Daily Volume	58,531,689
Daily Value	\$33,805,188
Average Trade Size	3,966
% TSXV Volume	41.10%



Top 20 TSXV Symbols by Volume		
Symbol	TSXV Volume	TSXV Value
ZMA	4,931,675	\$149,200
BCT	3,935,100	\$379,745
KALY	3,638,349	\$182,322
LABS	3,472,866	\$18,234,041
HIP	3,013,014	\$1,650,993
NRTH	2,586,598	\$2,667,957
SUGR	2,101,242	\$383,676
N	1,924,736	\$1,093,804
MXR	1,894,601	\$460,801
SUGR.WT	1,816,398	\$191,469
EVE	1,802,321	\$838,604
NTY	1,552,920	\$128,290
LG	1,491,127	\$161,337
SOLO	1,448,715	\$100,943
OGI	1,266,119	\$11,323,883
SCA	1,235,000	\$154,003
ROS	1,146,680	\$117,918
NZ	1,106,000	\$16,655
CKK	1,094,000	\$15,795
SUNM	1,027,406	\$563,747

Top 20 TSXV Symbols by Value		
Symbol	TSXV Volume	TSXV Value
LABS	3,472,866	\$18,234,041
OGI	1,266,119	\$11,323,883
RIV	902,500	\$3,757,497
KHRN	852,546	\$2,708,919
NRTH	2,586,598	\$2,667,957
PCLO	316,737	\$2,509,628
EMH	587,724	\$2,204,763
ZENA	926,651	\$1,757,230
HIP	3,013,014	\$1,650,993
KBLT	330,898	\$1,533,675
N	1,924,736	\$1,093,804
WL	597,342	\$870,845
EVE	1,802,321	\$838,604
STC	457,834	\$728,416
WMD	359,116	\$673,528
HIVE	893,679	\$666,073
SUNM	1,027,406	\$563,747
CMI	322,400	\$532,616
RTI	532,103	\$516,639
SCAN	550,040	\$501,810

Dark TSX/TSXV Trading			
Volume	12,066,860	Daily Trades	40,210
Value	287,004,058	Daily Symbols Traded	1,036