



May 23, 2019

For more information, email trading_sales@tsx.com
 Visit our blog at <http://exchange.tmx.com/>

Indices	May 23 Close	Previous Close	Change	% Change
S&P/TSX Composite Index	16,164.61			%
S&P/TSX 60 Index	969.43			%
S&P/TSX Venture Composite	602.02			%
S&P/TSX Completion Index	964.91			%
S&P/TSX Smallcap Index	555.96			%

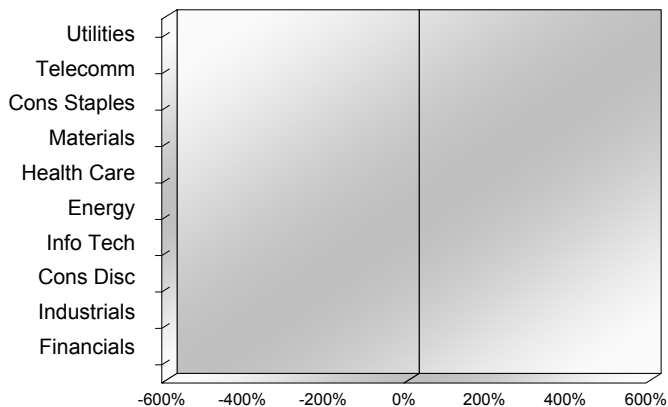
S&P/TSX Composite Index		
Advancers	Decliners	Unchanged
0	0	0

S&P/TSX Composite Index			
Top 10 Index Contributors		Top 10 Index Detractors	
Constituent	Index Contribution	Constituent	Index Contribution

S&P/TSX Composite Index			
Top 10 Advancers		Top 10 Decliners	
Constituent	Return	Constituent	Return
	%		%

S&P/TSX Composite Index				
Sector	# of Index Constituents	Weight	Market Cap (\$B)	Index Contribution
Utilities	16	%	\$97.52	
Communication Services	7	%	\$132.15	
Consumer Staples	10	%	\$93.46	
Materials	49	%	\$216.22	
Health Care	11	%	\$47.75	
Energy	41	%	\$402.14	
Information Technology	10	%	\$113.07	
Consumer Discretionary	17	%	\$93.68	
Industrials	30	%	\$259.81	
Financials	26	%	\$729.29	
S&P/TSX Composite Index	217	%	\$2,185.09	

S&P/TSX Composite Index - Sectors Returns



This report is published by TSX Inc. TSX Inc. does not guarantee either the completeness or the accuracy of this information. The information contained in this report is provided for informational purposes only and you agree not to rely upon the information contained in this report for any trading, business or financial purpose. These sheets are printed in Canada and issued by TSX Inc. under the express condition, to which everyone receiving or making use thereof assents, that no liability shall be incurred by TSX Inc. or its affiliated companies or any other vendor or donor, including, without limitation, for reliance on or for any errors or inaccuracies in this report. Neither TMX Group Limited, TSX Inc., nor any of their affiliated companies, guarantees the completeness of the information contained in this document and are not responsible for any errors or omission in or your use of, or reliance on, the information. This publication is under copyright. © 2015 TSX Inc. All rights reserved. Do not copy, distribute, sell or modify this publication without the prior written consent of TSX Inc. www.tmx.com/trading

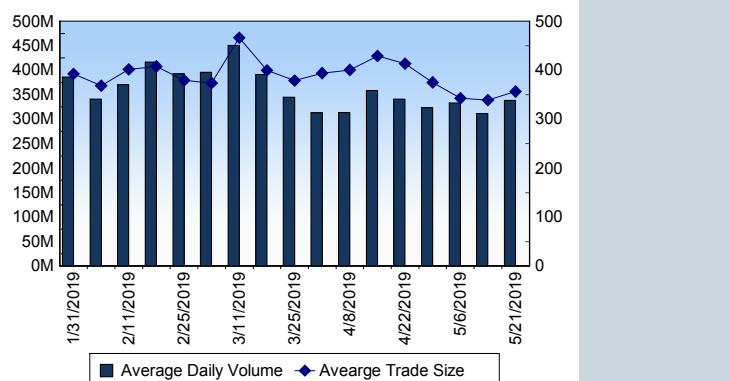
TSX

Daily Volume	374,398,761
Daily Value	\$8,213,391,951
Daily Trades	1,060,746
Daily Symbols Traded	1,871

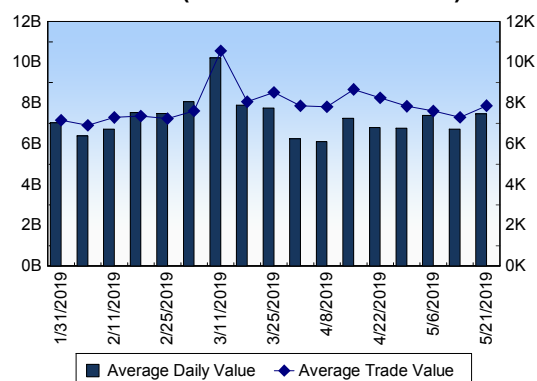
TSX ANONYMOUS TRADING

Daily Volume	134,126,758
Daily Value	\$3,218,687,930
Average Trade Size	291
% TSX Volume	35.82 %

TSX Volume



TSX Value (in Canadian Dollars)



Top 20 TSX Symbols by Volume

Symbol	TSX Volume	TSX Value
ECA	9,994,499	\$81,235,033
XIU	8,712,451	\$213,344,047
FM	6,822,404	\$67,270,990
BTO	6,091,997	\$20,690,309
BBD.B	5,824,688	\$12,013,034
ACB	5,773,482	\$64,753,680
CPG	5,435,518	\$25,582,979
ENB	5,355,508	\$266,458,470
S	5,319,593	\$1,010,771
HOU	5,181,749	\$34,723,094
MEG	5,174,823	\$23,278,182
TD	5,007,648	\$375,790,867
CM	4,841,832	\$505,282,462
HOD	4,822,135	\$25,400,845
BTE	4,742,951	\$10,820,697
SWY	4,649,175	\$234,837
SU	4,539,644	\$187,205,878
RY	4,296,227	\$441,884,657
MFC	4,145,708	\$95,785,721
ABX	4,110,029	\$67,019,005

Top 20 TSX Symbols by Value

Symbol	TSX Volume	TSX Value
CM	4,841,832	\$505,282,462
RY	4,296,227	\$441,884,657
TD	5,007,648	\$375,790,867
ENB	5,355,508	\$266,458,470
BMO	2,534,238	\$259,202,818
BNS	3,368,051	\$237,413,919
XIU	8,712,451	\$213,344,047
CNR	1,626,004	\$200,127,697
SU	4,539,644	\$187,205,878
TRP	2,033,392	\$132,459,363
CNQ	3,709,574	\$128,643,308
BCE	2,044,932	\$124,620,072
CP	395,836	\$118,360,307
WEED	1,757,648	\$105,302,093
T	1,998,350	\$100,612,793
SHOP	263,456	\$96,420,034
RCI.B	1,350,727	\$95,926,270
MFC	4,145,708	\$95,785,721
PPL	1,871,328	\$89,725,659
NTR	1,358,812	\$86,595,602

ETF Trading

Daily Volume	37,703,803	Average Trade Value	\$15,047
Daily Value	\$669,592,557	Average Trade Size	847
# Trades	44,499	# of ETFs Traded	568

Top 10 ETFs by TSX Volume

Symbol	Market Volume	Market Value
XIU	8,712,451	\$213,344,047
HOU	5,181,749	\$34,723,094
HOD	4,822,135	\$25,400,845
XEG	2,576,712	\$23,582,039
ZEB	906,996	\$25,861,318
HND	845,430	\$6,217,798
VFV	801,645	\$54,108,214
HGU	760,125	\$7,446,822
HNU	756,684	\$9,377,651
XGD	737,966	\$8,388,251

Top 10 ETFs by TSX Value

Symbol	Market Volume	Market Value
XIU	8,712,451	\$213,344,047
VFV	801,645	\$54,108,214
HOU	5,181,749	\$34,723,094
ZEB	906,996	\$25,861,318
XFN	681,503	\$25,665,720
HOD	4,822,135	\$25,400,845
HXT	685,214	\$24,182,359
XEG	2,576,712	\$23,582,039
XSP	665,216	\$20,949,509
ZSP	470,307	\$19,671,225

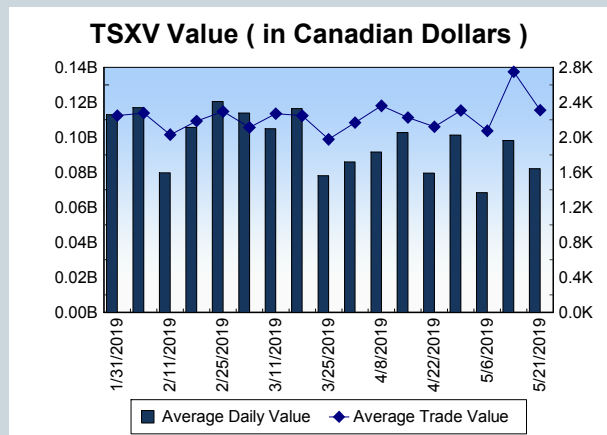
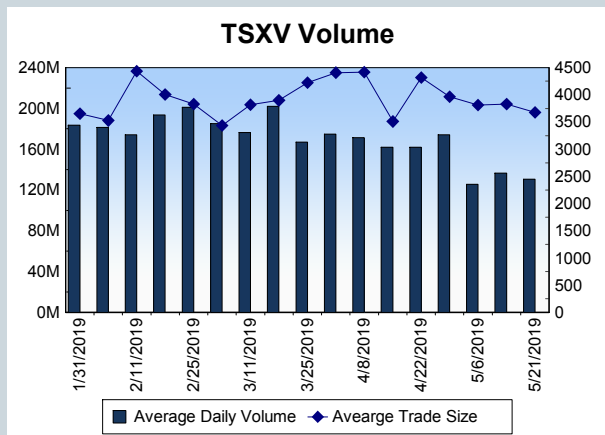
Block Trades	Non Block Trades
1,253	1,059,493

Top 5 Block Trade Brokers by Volume	
Broker	TSX Block Volume
NATIONAL BANK FINANCIAL	12,972,700
TD SECURITIES INC.	10,668,400
BMO NESBITT BURNS INC.	10,650,300
VIRTU ITG CANADA CORP	10,111,300
J.P. MORGAN SECURITIES C	8,976,600

Top 5 Block Trade Symbols by Volume	
Symbol	TSX Block Volume
XIU	5,330,000
ENB	2,497,400
BTO	2,493,900
HSE	1,389,000
ROXG	1,355,000

TSXV	
Daily Volume	111,399,168
Daily Value	\$69,991,732
Daily Trades	31,947
Daily Symbols Traded	1,016

TSXV ANONYMOUS TRADING	
Daily Volume	49,404,619
Daily Value	\$28,441,369
Average Trade Size	4,029
% TSXV Volume	44.35%



Top 20 TSXV Symbols by Volume		
Symbol	TSXV Volume	TSXV Value
N	2,676,190	\$2,162,180
SOLO	2,061,300	\$103,652
LABS	1,840,516	\$12,042,475
DASH	1,727,753	\$171,247
NRTH	1,657,728	\$1,777,852
OGI	1,478,389	\$14,576,748
GRAT	1,455,000	\$71,985
PLAN	1,375,000	\$75,570
Z	1,313,761	\$59,978
VENZ	1,282,580	\$117,074
SUGR	1,268,794	\$238,055
MCCN	1,255,587	\$355,348
ADD	1,251,712	\$85,440
LG	1,228,639	\$123,660
NRN	1,170,500	\$104,908
RLV	988,050	\$99,433
TRS	967,400	\$23,185
DM	931,940	\$29,128
FCC	921,029	\$149,418
CANX	851,900	\$46,195

Top 20 TSXV Symbols by Value		
Symbol	TSXV Volume	TSXV Value
OGI	1,478,389	\$14,576,748
LABS	1,840,516	\$12,042,475
RIV	576,265	\$2,544,929
N	2,676,190	\$2,162,180
NRTH	1,657,728	\$1,777,852
IGX.DB	15,000	\$1,485,000
KHRN	453,280	\$1,428,213
PCLO	171,950	\$1,284,822
ZENA	674,038	\$1,063,859
SVI	342,950	\$975,330
ADZN	837,300	\$878,599
SIL	193,410	\$860,051
EMH	203,888	\$747,711
FLWR	94,988	\$670,071
PEO	80,150	\$649,359
WMD	373,560	\$631,178
RTI	624,068	\$603,560
WED	194,400	\$555,273
WELL	745,453	\$502,847
KBLT	111,048	\$454,711

Dark TSX/TSXV Trading			
Volume	14,009,870	Daily Trades	46,849
Value	328,966,754	Daily Symbols Traded	969