



March 23, 2020

For more information, email trading_sales@tsx.com
 Visit our blog at <http://exchange.tmx.com/>

Indices	March 23 Close	Previous Close	Change	% Change
S&P/TSX Composite Index	11,228.49			%
S&P/TSX 60 Index	687.27			%
S&P/TSX Venture Composite	351.19			%
S&P/TSX Completion Index	617.00			%
S&P/TSX Smallcap Index	319.96			%

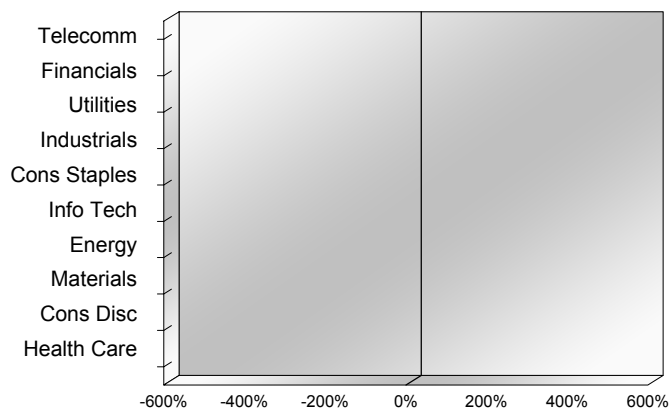
S&P/TSX Composite Index		
Advancers	Decliners	Unchanged
0	0	0

S&P/TSX Composite Index			
Top 10 Index Contributors		Top 10 Index Detractors	
Constituent	Index Contribution	Constituent	Index Contribution

S&P/TSX Composite Index			
Top 10 Advancers		Top 10 Decliners	
Constituent	Return	Constituent	Return
	%		%

S&P/TSX Composite Index				
Sector	# of Index Constituents	Weight	Market Cap (\$B)	Index Contribution
Communication Services	8	%	\$100.21	
Financials	26	%	\$486.25	
Utilities	16	%	\$80.65	
Industrials	31	%	\$196.44	
Consumer Staples	11	%	\$75.45	
Information Technology	10	%	\$117.89	
Energy	30	%	\$194.41	
Materials	47	%	\$208.55	
Consumer Discretionary	16	%	\$54.78	
Health Care	10	%	\$16.97	
S&P/TSX Composite Index	205	%	\$1,531.60	

S&P/TSX Composite Index - Sectors Returns



This report is published by TSX Inc. TSX Inc. does not guarantee either the completeness or the accuracy of this information. The information contained in this report is provided for informational purposes only and you agree not to rely upon the information contained in this report for any trading, business or financial purpose. These sheets are printed in Canada and issued by TSX Inc. under the express condition, to which everyone receiving or making use thereof assents, that no liability shall be incurred by TSX Inc. or its affiliated companies or any other vendor or donor, including, without limitation, for reliance on or for any errors or inaccuracies in this report. Neither TMX Group Limited, TSX Inc., nor any of their affiliated companies, guarantees the completeness of the information contained in this document and are not responsible for any errors or omission in or your use of, or reliance on, the information. This publication is under copyright. © 2015 TSX Inc. All rights reserved. Do not copy, distribute, sell or modify this publication without the prior written consent of TSX Inc. www.tmx.com/trading

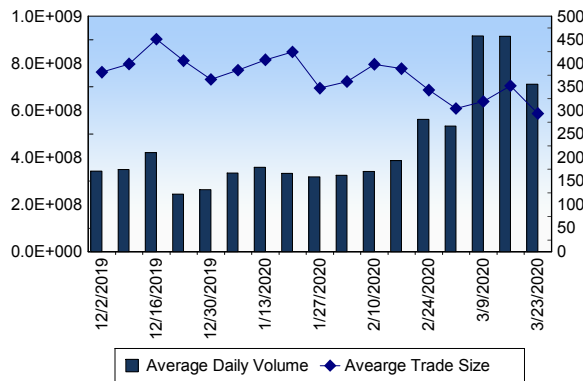
TSX

Daily Volume	711,423,888
Daily Value	\$12,210,114,352
Daily Trades	2,423,282
Daily Symbols Traded	2,048

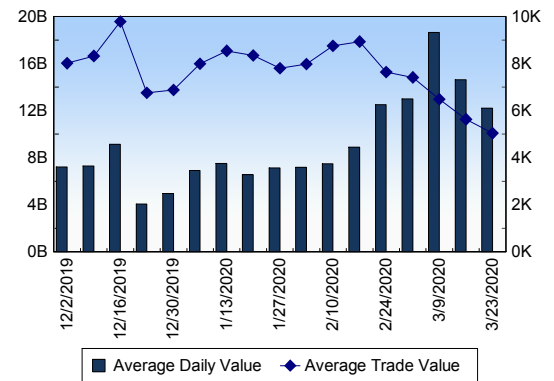
TSX ANONYMOUS TRADING

Daily Volume	254,783,590
Daily Value	\$4,632,587,283
Average Trade Size	247
% TSX Volume	35.81 %

TSX Volume



TSX Value (in Canadian Dollars)



Top 20 TSX Symbols by Volume

Symbol	TSX Volume	TSX Value
XIU	20,725,357	\$367,718,942
ACB	14,008,860	\$14,373,600
SU	13,691,217	\$210,697,059
CNQ	13,383,757	\$160,636,126
BBD.B	13,139,725	\$5,780,430
TD	11,966,840	\$600,564,720
K	11,294,388	\$64,909,935
CVE	11,016,833	\$26,438,645
BTO	10,794,496	\$46,429,713
MFC	10,733,521	\$141,117,941
YRI	10,258,806	\$42,252,665
ENB	8,623,924	\$302,080,833
BNS	8,353,214	\$396,805,624
RY	8,021,877	\$597,123,187
HOU	8,015,787	\$48,646,672
SMF	7,080,754	\$18,216,103
IPL	7,034,208	\$51,279,756
CM	6,701,621	\$470,264,068
BCE	6,186,150	\$296,661,276
AC	6,087,660	\$78,352,997

Top 20 TSX Symbols by Value

Symbol	TSX Volume	TSX Value
TD	11,966,840	\$600,564,720
RY	8,021,877	\$597,123,187
CM	6,701,621	\$470,264,068
BNS	8,353,214	\$396,805,624
XIU	20,725,357	\$367,718,942
BMO	5,328,002	\$310,160,470
ENB	8,623,924	\$302,080,833
BCE	6,186,150	\$296,661,276
TRP	5,936,202	\$292,856,800
CNR	2,515,651	\$250,800,345
BAM.A	4,299,639	\$217,001,306
SU	13,691,217	\$210,697,059
SHOP	355,673	\$189,475,139
CNQ	13,383,757	\$160,636,126
ABX	5,854,558	\$146,362,322
NA	3,563,103	\$143,567,888
MFC	10,733,521	\$141,117,941
RCI.B	2,848,380	\$140,981,847
CP	519,746	\$139,985,940
ATD.B	4,166,025	\$134,800,758

ETF Trading

Daily Volume	104,482,337	Average Trade Value	\$10,939
Daily Value	\$1,814,851,242	Average Trade Size	630
# Trades	165,903	# of ETFs Traded	719

Top 10 ETFs by TSX Volume

Symbol	Market Volume	Market Value
XIU	20,725,357	\$367,718,942
HOU	8,015,787	\$48,646,672
XFN	4,595,519	\$118,345,034
HSD	4,074,523	\$76,068,253
XEG	2,971,441	\$8,514,138
HOD	2,591,030	\$33,611,174
HQD	2,546,690	\$53,769,099
HNU	2,264,432	\$7,226,249
XSP	2,198,125	\$53,361,181
ZFS	1,932,385	\$28,191,194

Top 10 ETFs by TSX Value

Symbol	Market Volume	Market Value
XIU	20,725,357	\$367,718,942
XFN	4,595,519	\$118,345,034
HSD	4,074,523	\$76,068,253
HQD	2,546,690	\$53,769,099
XSP	2,198,125	\$53,361,181
HOU	8,015,787	\$48,646,672
VFV	618,318	\$35,739,241
ZEB	1,892,865	\$35,534,909
HOD	2,591,030	\$33,611,174
XIC	1,740,570	\$32,109,304

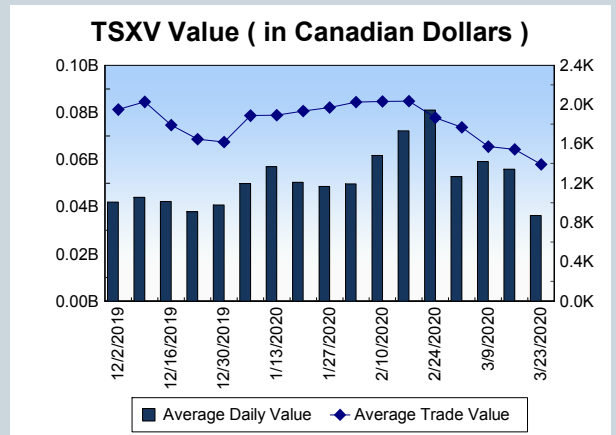
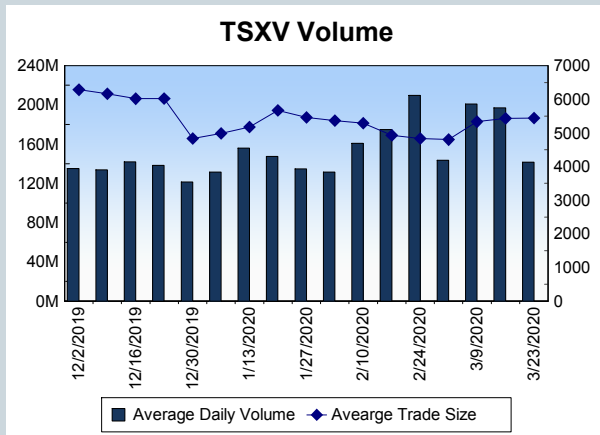
Block Trades	Non Block Trades
1,488	2,421,794

Top 5 Block Trade Brokers by Volume	
Broker	TSX Block Volume
TD SECURITIES INC.	34,262,400
NATIONAL BANK FINANCIAL	23,221,000
CIBC WORLD MARKETS INC.	8,940,900
RBC CAPITAL MARKETS	8,639,100
BMO NESBITT BURNS INC.	8,264,850

Top 5 Block Trade Symbols by Volume	
Symbol	TSX Block Volume
CNQ	5,530,600
MFC	4,303,700
TD	3,186,200
SU	3,036,500
XIU	2,472,700

TSXV	
Daily Volume	141,686,184
Daily Value	\$36,215,357
Daily Trades	26,032
Daily Symbols Traded	1,007

TSXV ANONYMOUS TRADING	
Daily Volume	55,123,317
Daily Value	\$14,717,170
Average Trade Size	5,713
% TSXV Volume	38.91%



Top 20 TSXV Symbols by Volume		
Symbol	TSXV Volume	TSXV Value
TTD	8,541,491	\$601,188
LBL	6,431,331	\$673,333
VXL	5,599,225	\$889,373
LITT	5,034,399	\$139,014
VIS	3,741,362	\$204,899
ATE	2,757,026	\$1,488,704
NRTH	2,503,196	\$229,021
HIVE	2,123,348	\$390,031
KSI	1,938,455	\$2,231,116
GGG	1,870,900	\$86,588
XLY	1,661,155	\$547,539
PDM	1,365,058	\$84,431
KNT	1,350,975	\$3,828,857
DYA	1,294,208	\$548,769
ICO	1,222,052	\$30,551
TBP	1,112,452	\$237,511
LAT	1,000,000	\$5,000
SWA	992,111	\$34,499
CRU	992,000	\$4,960
NOB	973,000	\$30,295

Top 20 TSXV Symbols by Value		
Symbol	TSXV Volume	TSXV Value
KNT	1,350,975	\$3,828,857
NUAG	545,450	\$2,243,017
KSI	1,938,455	\$2,231,116
ATE	2,757,026	\$1,488,704
GBR	206,195	\$1,180,660
XBC	533,637	\$1,062,292
SVI	376,211	\$1,021,012
VXL	5,599,225	\$889,373
LBL	6,431,331	\$673,333
VLNS	331,358	\$651,736
TTD	8,541,491	\$601,188
PEO	89,041	\$592,963
DYA	1,294,208	\$548,769
XLY	1,661,155	\$547,539
MTA	79,887	\$471,728
KHRN	862,763	\$413,192
NVO	246,599	\$394,996
HIVE	2,123,348	\$390,031
ERE.UN	116,944	\$356,825
AZM	313,973	\$348,055

Dark TSX/TSXV Trading			
Volume	33,799,960	Daily Trades	172,734
Value	786,001,158	Daily Symbols Traded	1,423