



March 25, 2020

For more information, email trading_sales@tsx.com
 Visit our blog at <http://exchange.tmx.com/>

Indices	March 25 Close	Previous Close	Change	% Change
S&P/TSX Composite Index	13,139.23			%
S&P/TSX 60 Index	802.55			%
S&P/TSX Venture Composite	395.67			%
S&P/TSX Completion Index	728.32			%
S&P/TSX Smallcap Index	372.07			%

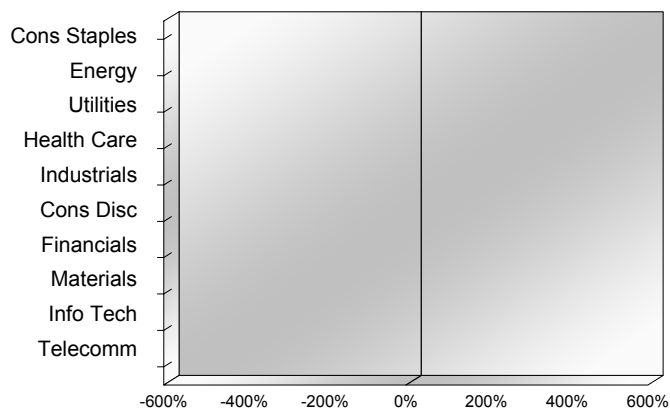
S&P/TSX Composite Index		
Advancers	Decliners	Unchanged
0	0	0

S&P/TSX Composite Index			
Top 10 Index Contributors		Top 10 Index Detractors	
Constituent	Index Contribution	Constituent	Index Contribution

S&P/TSX Composite Index			
Top 10 Advancers		Top 10 Decliners	
Constituent	Return	Constituent	Return
	%		%

S&P/TSX Composite Index				
Sector	# of Index Constituents	Weight	Market Cap (\$B)	Index Contribution
Consumer Staples	11	%	\$82.14	
Energy	30	%	\$236.14	
Utilities	16	%	\$100.86	
Health Care	10	%	\$19.35	
Industrials	31	%	\$215.67	
Consumer Discretionary	16	%	\$67.51	
Financials	26	%	\$588.41	
Materials	47	%	\$235.34	
Information Technology	10	%	\$131.24	
Communication Services	8	%	\$113.74	
S&P/TSX Composite Index	205	%	\$1,790.40	

S&P/TSX Composite Index - Sectors Returns



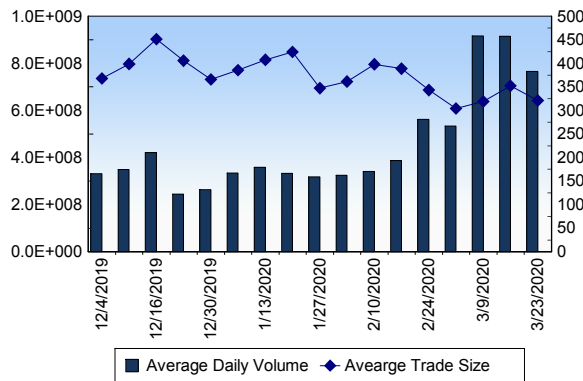
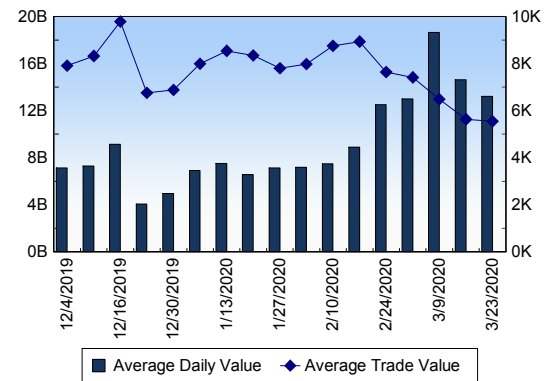
This report is published by TSX Inc. TSX Inc. does not guarantee either the completeness or the accuracy of this information. The information contained in this report is provided for informational purposes only and you agree not to rely upon the information contained in this report for any trading, business or financial purpose. These sheets are printed in Canada and issued by TSX Inc. under the express condition, to which everyone receiving or making use thereof assents, that no liability shall be incurred by TSX Inc. or its affiliated companies or any other vendor or donor, including, without limitation, for reliance on or for any errors or inaccuracies in this report. Neither TMX Group Limited, TSX Inc., nor any of their affiliated companies, guarantees the completeness of the information contained in this document and are not responsible for any errors or omission in or your use of, or reliance on, the information. This publication is under copyright. © 2015 TSX Inc. All rights reserved. Do not copy, distribute, sell or modify this publication without the prior written consent of TSX Inc. www.tmx.com/trading

TSX

Daily Volume	840,657,804
Daily Value	\$14,336,696,972
Daily Trades	2,490,059
Daily Symbols Traded	2,047

TSX ANONYMOUS TRADING

Daily Volume	314,267,298
Daily Value	\$5,851,791,747
Average Trade Size	302
% TSX Volume	37.38 %

TSX Volume**TSX Value (in Canadian Dollars)****Top 20 TSX Symbols by Volume**

Symbol	TSX Volume	TSX Value
BBD.B	28,693,251	\$14,239,175
XIU	18,306,550	\$371,741,196
CVE	15,555,287	\$43,423,589
TRP	14,323,746	\$839,717,244
ACB	14,097,145	\$15,233,650
BTE	13,162,930	\$4,525,363
AC	13,034,463	\$224,222,782
CNQ	11,614,684	\$164,493,221
SU	11,183,760	\$208,768,806
MFC	11,178,004	\$189,890,333
K	10,827,246	\$71,470,698
CPG	10,023,550	\$10,509,001
WCP	9,507,496	\$11,153,221
BTO	9,339,009	\$46,554,544
ENB	8,940,046	\$367,820,574
TD	8,719,096	\$519,785,886
YRI	8,460,757	\$39,029,794
BNS	8,201,764	\$464,237,229
ABX	7,488,556	\$205,147,123
RY	7,159,406	\$611,721,196

Top 20 TSX Symbols by Value

Symbol	TSX Volume	TSX Value
TRP	14,323,746	\$839,717,244
RY	7,159,406	\$611,721,196
TD	8,719,096	\$519,785,886
BNS	8,201,764	\$464,237,229
BMO	6,015,890	\$415,672,481
CM	4,660,136	\$377,691,283
XIU	18,306,550	\$371,741,196
ENB	8,940,046	\$367,820,574
BCE	5,902,776	\$314,277,619
CNR	2,410,047	\$260,194,473
SHOP	371,216	\$240,120,698
SLF	5,638,034	\$239,964,692
AC	13,034,463	\$224,222,782
SU	11,183,760	\$208,768,806
ABX	7,488,556	\$205,147,123
MFC	11,178,004	\$189,890,333
PPL	5,937,499	\$185,941,374
NA	3,536,277	\$181,219,975
BAM.A	2,946,425	\$177,496,889
XFN	5,668,197	\$170,678,757

ETF Trading

Daily Volume	101,182,364	Average Trade Value	\$11,882
Daily Value	\$1,833,189,510	Average Trade Size	656
# Trades	154,280	# of ETFs Traded	722

Top 10 ETFs by TSX Volume

Symbol	Market Volume	Market Value
XIU	18,306,550	\$371,741,196
HOU	7,062,626	\$47,567,129
XFN	5,668,197	\$170,678,757
HSD	5,485,497	\$81,103,183
XEG	4,933,133	\$16,071,961
XRE	3,954,871	\$53,565,577
ZEB	2,891,825	\$64,226,763
XSP	2,271,180	\$61,836,367
HOD	2,036,362	\$23,189,935
HNU	1,941,306	\$6,595,427

Top 10 ETFs by TSX Value

Symbol	Market Volume	Market Value
XIU	18,306,550	\$371,741,196
XFN	5,668,197	\$170,678,757
HSD	5,485,497	\$81,103,183
ZEB	2,891,825	\$64,226,763
XSP	2,271,180	\$61,836,367
XRE	3,954,871	\$53,565,577
HOU	7,062,626	\$47,567,129
HXD	1,545,349	\$34,650,033
HXT	1,056,755	\$31,754,811
ZCN	1,624,054	\$28,974,397

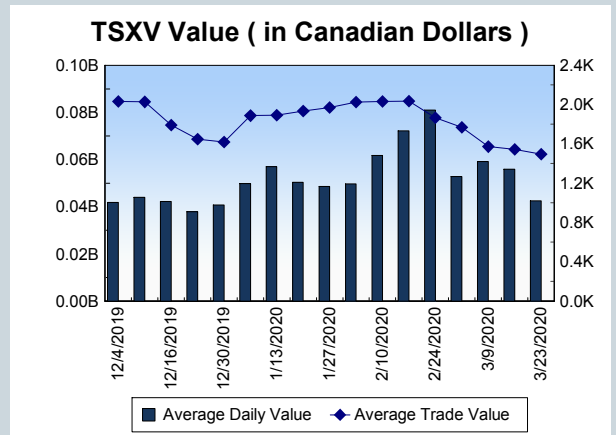
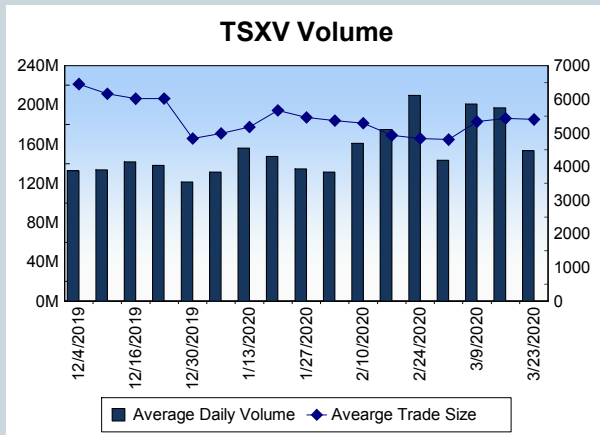
Block Trades	Non Block Trades
1,819	2,488,240

Top 5 Block Trade Brokers by Volume	
Broker	TSX Block Volume
NATIONAL BANK FINANCIAL	21,263,600
BMO NESBITT BURNS INC.	19,961,850
TD SECURITIES INC.	19,577,100
CIBC WORLD MARKETS INC.	14,645,800
GOLDMAN SACHS CANADA I	10,025,700

Top 5 Block Trade Symbols by Volume	
Symbol	TSX Block Volume
TRP	10,529,000
XIU	5,463,400
SLF	3,210,600
BNS	2,903,400
MFC	2,577,900

TSXV	
Daily Volume	147,263,976
Daily Value	\$47,722,605
Daily Trades	30,598
Daily Symbols Traded	996

TSXV ANONYMOUS TRADING	
Daily Volume	61,117,785
Daily Value	\$21,159,293
Average Trade Size	5,039
% TSXV Volume	41.50%



Top 20 TSXV Symbols by Volume		
Symbol	TSXV Volume	TSXV Value
SQD	4,998,932	\$707,782
LBL	3,317,299	\$394,825
PDM	3,303,558	\$182,917
DWS	3,103,300	\$265,065
NRTH	2,782,711	\$486,978
BANC	2,190,100	\$10,951
KNT	2,132,391	\$6,735,349
DYA	2,026,814	\$1,094,354
RHT	1,866,807	\$782,202
AUL	1,858,500	\$37,745
KLY	1,836,923	\$27,132
HIVE	1,690,747	\$331,858
MXL.H	1,660,623	\$16,606
TKX	1,609,205	\$53,781
N	1,577,711	\$536,080
SUR	1,519,000	\$7,690
VLNS	1,415,039	\$2,968,631
FLT	1,317,480	\$937,526
VXL	1,250,244	\$184,787
EVE	1,241,839	\$102,765

Top 20 TSXV Symbols by Value		
Symbol	TSXV Volume	TSXV Value
KNT	2,132,391	\$6,735,349
VLNS	1,415,039	\$2,968,631
XBC	965,690	\$2,229,319
GBR	209,103	\$1,322,172
HTL	1,172,029	\$1,174,683
NUAG	227,692	\$1,157,169
DYA	2,026,814	\$1,094,354
PEO	145,975	\$1,080,659
FLT	1,317,480	\$937,526
ERE.UN	252,137	\$828,561
FCD.UN	198,068	\$826,775
NVO	374,262	\$783,147
RHT	1,866,807	\$782,202
MCR	388,038	\$763,482
SQD	4,998,932	\$707,782
PGM	820,617	\$551,980
N	1,577,711	\$536,080
ATE	894,379	\$505,720
NRTH	2,782,711	\$486,978
NXR.UN	317,705	\$475,212

Dark TSX/TSXV Trading			
Volume	39,209,950	Daily Trades	175,241
Value	964,974,288	Daily Symbols Traded	1,444