



May 5, 2020

For more information, email [trading\\_sales@tsx.com](mailto:trading_sales@tsx.com)

Visit our blog at <http://exchange.tmx.com/>

Indices	May 5 Close	Previous Close	Change	% Change
S&P/TSX Composite Index	14,811.56			%
S&P/TSX 60 Index	896.99			%
S&P/TSX Venture Composite	480.47			%
S&P/TSX Completion Index	850.22			%
S&P/TSX Smallcap Index	452.29			%

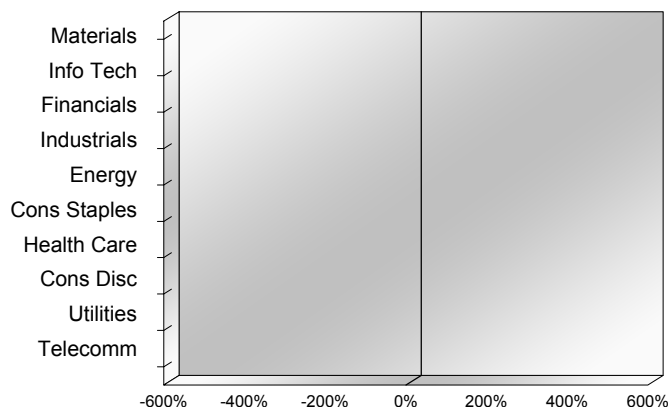
S&P/TSX Composite Index		
<b>Advancers</b>	<b>Decliners</b>	<b>Unchanged</b>
0	0	0

S&P/TSX Composite Index			
Top 10 Index Contributors		Top 10 Index Detractors	
Constituent	Index Contribution	Constituent	Index Contribution

S&P/TSX Composite Index			
Top 10 Advancers		Top 10 Decliners	
Constituent	Return	Constituent	Return
	%		%

S&P/TSX Composite Index				
Sector	# of Index Constituents	Weight	Market Cap (\$B)	Index Contribution
Materials	47	%	\$313.61	
Information Technology	10	%	\$179.70	
Financials	26	%	\$591.88	
Industrials	31	%	\$238.44	
Energy	30	%	\$279.37	
Consumer Staples	11	%	\$90.48	
Health Care	10	%	\$20.44	
Consumer Discretionary	15	%	\$75.13	
Utilities	16	%	\$110.06	
Communication Services	8	%	\$120.08	
<b>S&amp;P/TSX Composite Index</b>	<b>204</b>	<b>%</b>	<b>\$2,019.19</b>	

S&P/TSX Composite Index - Sectors Returns



This report is published by TSX Inc. TSX Inc. does not guarantee either the completeness or the accuracy of this information. The information contained in this report is provided for informational purposes only and you agree not to rely upon the information contained in this report for any trading, business or financial purpose. These sheets are printed in Canada and issued by TSX Inc. under the express condition, to which everyone receiving or making use thereof assents, that no liability shall be incurred by TSX Inc. or its affiliated companies or any other vendor or donor, including, without limitation, for reliance on or for any errors or inaccuracies in this report. Neither TMX Group Limited, TSX Inc., nor any of their affiliated companies, guarantees the completeness of the information contained in this document and are not responsible for any errors or omission in or your use of, or reliance on, the information. This publication is under copyright. © 2015 TSX Inc. All rights reserved. Do not copy, distribute, sell or modify this publication without the prior written consent of TSX Inc. [www.tmx.com/trading](http://www.tmx.com/trading)

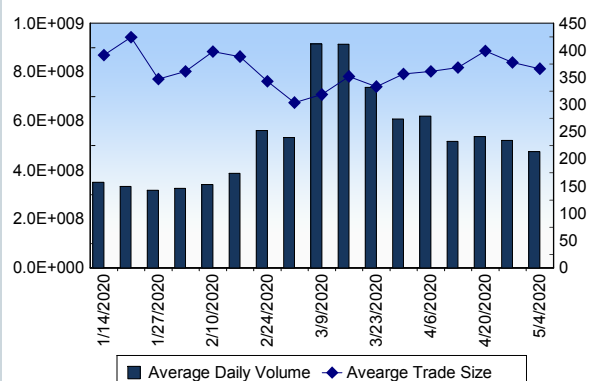
## TSX

Daily Volume	469,263,341
Daily Value	\$8,266,919,525
Daily Trades	1,294,072
Daily Symbols Traded	1,917

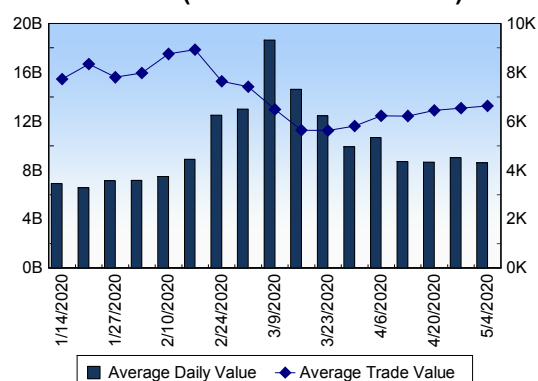
## TSX ANONYMOUS TRADING

Daily Volume	164,152,308
Daily Value	\$3,133,675,547
Average Trade Size	290
% TSX Volume	34.98 %

TSX Volume



TSX Value ( in Canadian Dollars )



Top 20 TSX Symbols by Volume

Symbol	TSX Volume	TSX Value
BBD.B	17,547,978	\$9,192,590
CVE	13,129,776	\$66,782,340
SU	10,462,352	\$248,930,664
MEG	10,161,722	\$33,371,177
WCP	8,892,119	\$16,555,495
AC	8,096,563	\$142,020,931
MFC	7,843,979	\$129,778,964
CPG	7,474,495	\$14,697,904
BMO	6,703,143	\$458,265,965
BTO	6,190,695	\$46,151,727
ABX	6,066,823	\$236,996,464
BTE	5,837,171	\$2,662,953
ENB	5,220,010	\$224,968,389
K	5,047,189	\$48,245,219
CNQ	5,031,698	\$114,995,370
HNU	4,910,348	\$21,354,497
RNX	4,680,486	\$2,041,332
TD	4,678,640	\$268,054,377
YRI	4,406,482	\$30,284,545
PNE	4,358,795	\$760,020

Top 20 TSX Symbols by Value

Symbol	TSX Volume	TSX Value
BMO	6,703,143	\$458,265,965
SHOP	380,863	\$368,348,419
TD	4,678,640	\$268,054,377
SU	10,462,352	\$248,930,664
RY	2,876,262	\$244,883,776
ABX	6,066,823	\$236,996,464
ENB	5,220,010	\$224,968,389
EMA	3,041,714	\$168,021,039
TRP	2,329,876	\$154,596,004
CP	484,729	\$149,102,309
BNS	2,737,988	\$146,787,092
AC	8,096,563	\$142,020,931
CM	1,620,454	\$133,569,196
FTS	2,417,534	\$131,743,959
MFC	7,843,979	\$129,778,964
CTC.A	1,385,114	\$127,720,987
FNV	627,396	\$127,047,341
CNR	1,102,548	\$124,359,990
CNQ	5,031,698	\$114,995,370
BAM.A	2,419,685	\$113,214,214

## ETF Trading

Daily Volume	42,095,656	Average Trade Value	\$11,410
Daily Value	\$719,289,530	Average Trade Size	668
# Trades	63,039	# of ETFs Traded	645

Top 10 ETFs by TSX Volume

Symbol	Market Volume	Market Value
HNU	4,910,348	\$21,354,497
XEG	4,187,115	\$20,633,045
XIU	3,286,559	\$74,825,644
HSD	1,777,138	\$18,307,688
HND	1,756,617	\$16,934,851
HSU	1,523,022	\$37,703,082
HGD	1,450,345	\$7,267,678
XGD	1,321,602	\$28,787,545
HGU	1,173,813	\$35,623,544
HOD	948,078	\$14,472,800

Top 10 ETFs by TSX Value

Symbol	Market Volume	Market Value
XIU	3,286,559	\$74,825,644
HSU	1,523,022	\$37,703,082
HGU	1,173,813	\$35,623,544
XGD	1,321,602	\$28,787,545
HXT	842,492	\$28,479,293
XFN	708,952	\$21,831,479
HNU	4,910,348	\$21,354,497
XEG	4,187,115	\$20,633,045
HSD	1,777,138	\$18,307,688
HND	1,756,617	\$16,934,851

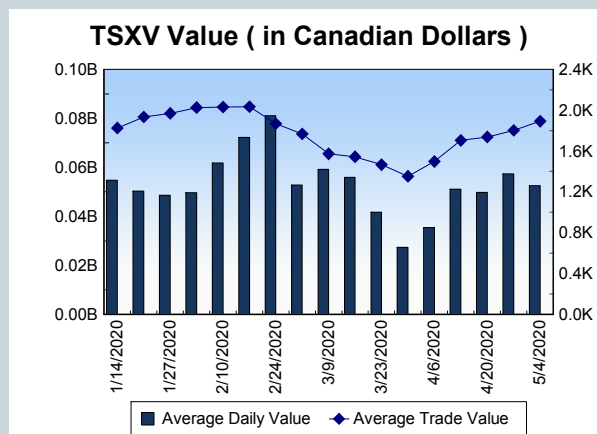
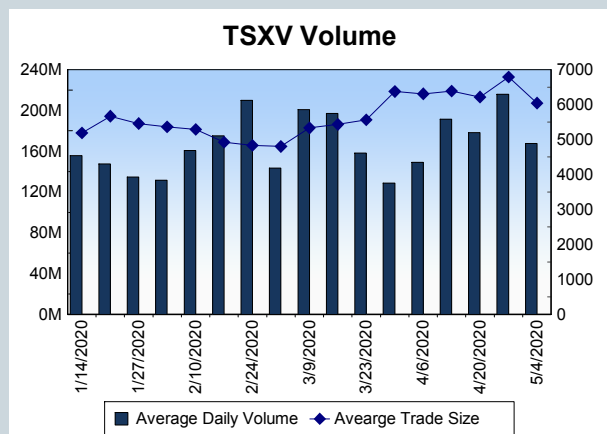
Block Trades	Non Block Trades
834	1,293,238

Top 5 Block Trade Brokers by Volume	
Broker	TSX Block Volume
RBC CAPITAL MARKETS	19,563,400
NATIONAL BANK FINANCIAL	15,788,400
SCOTIA CAPITAL INC.	12,361,090
TD SECURITIES INC.	9,928,700
CIBC WORLD MARKETS INC.	3,931,000

Top 5 Block Trade Symbols by Volume	
Symbol	TSX Block Volume
SU	4,744,500
MFC	4,700,700
BMO	4,450,900
ENB	2,702,300
EMA	2,348,400

TSXV	
Daily Volume	154,945,665
Daily Value	\$45,461,714
Daily Trades	25,735
Daily Symbols Traded	1,074

TSXV ANONYMOUS TRADING	
Daily Volume	56,963,708
Daily Value	\$19,578,237
Average Trade Size	5,711
% TSXV Volume	36.76%



Top 20 TSXV Symbols by Volume		
Symbol	TSXV Volume	TSXV Value
VXL	7,961,780	\$1,216,725
THRM	7,114,130	\$183,938
MIR	4,415,966	\$1,492,803
AAZ	3,808,471	\$191,104
ISD	2,826,508	\$179,476
ROS	2,441,364	\$843,362
ITT	2,386,453	\$156,771
MTLO	2,148,119	\$587,016
HIVE	2,083,947	\$738,471
ZMA	1,979,275	\$89,896
WKM	1,812,702	\$171,596
ABRA	1,654,520	\$160,564
XTT	1,631,820	\$138,191
PSH	1,537,760	\$202,616
LBC	1,510,000	\$150,740
FCC	1,436,789	\$246,001
EGT	1,268,341	\$91,655
HAWK	1,266,000	\$14,885
GXS	1,101,500	\$149,128
JRV	1,001,512	\$189,126

Top 20 TSXV Symbols by Value		
Symbol	TSXV Volume	TSXV Value
KNT	855,678	\$3,007,667
GBR	229,820	\$2,568,510
PEO	196,738	\$1,810,141
MIR	4,415,966	\$1,492,803
NUAG	216,157	\$1,390,066
VXL	7,961,780	\$1,216,725
NVO	391,328	\$1,105,375
GLDX	374,992	\$901,342
ROS	2,441,364	\$843,362
HIVE	2,083,947	\$738,471
ATE	931,714	\$621,610
XBC	179,839	\$609,486
QST	337,926	\$587,518
MTLO	2,148,119	\$587,016
NEWU	821,965	\$507,787
BSR	256,867	\$492,304
PGM	574,926	\$485,783
MTA	64,266	\$473,258
KHRN	535,259	\$450,211
GTT	294,628	\$426,035

Dark TSX/TSXV Trading			
Volume	17,626,840	Daily Trades	59,194
Value	395,589,604	Daily Symbols Traded	1,158