



March 17, 2021

For more information, email trading_sales@tsx.com
 Visit our blog at <http://exchange.tmx.com/>

Indices	March 17 Close	Previous Close	Change	% Change
S&P/TSX Composite Index	18,983.10			%
S&P/TSX 60 Index	1,130.83			%
S&P/TSX Venture Composite	997.54			%
S&P/TSX Completion Index	1,163.33			%
S&P/TSX Smallcap Index	757.24			%

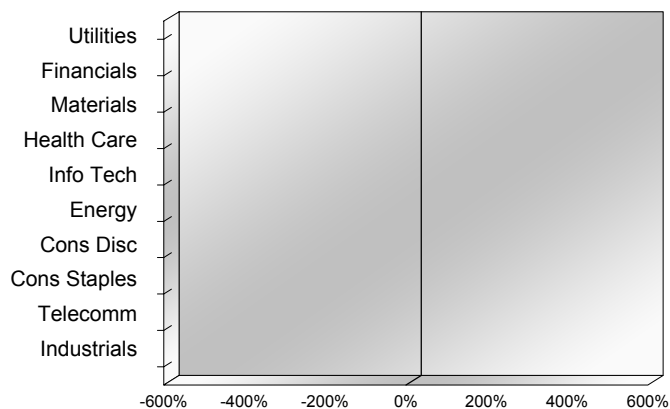
S&P/TSX Composite Index		
Advancers	Decliners	Unchanged
0	0	0

S&P/TSX Composite Index			
Top 10 Index Contributors		Top 10 Index Detractors	
Constituent	Index Contribution	Constituent	Index Contribution

S&P/TSX Composite Index			
Top 10 Advancers		Top 10 Decliners	
Constituent	Return	Constituent	Return
	%		%

S&P/TSX Composite Index				
Sector	# of Index Constituents	Weight	Market Cap (\$B)	Index Contribution
Utilities	16	%	\$127.04	
Financials	26	%	\$845.82	
Materials	50	%	\$330.91	
Health Care	9	%	\$41.62	
Information Technology	10	%	\$264.72	
Energy	22	%	\$340.30	
Consumer Discretionary	13	%	\$108.09	
Consumer Staples	11	%	\$95.76	
Communication Services	7	%	\$132.30	
Industrials	29	%	\$327.86	
S&P/TSX Composite Index	193	%	\$2,614.42	

S&P/TSX Composite Index - Sectors Returns



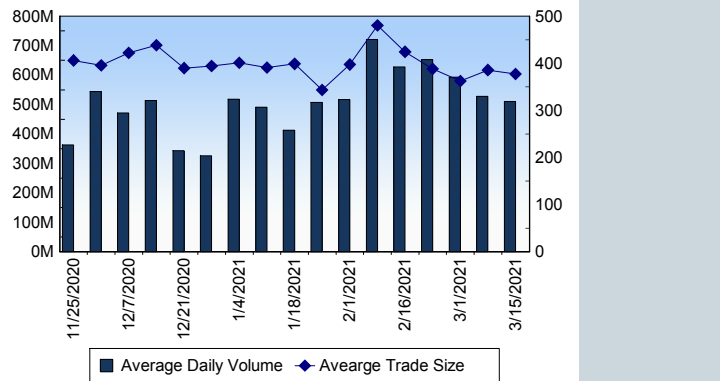
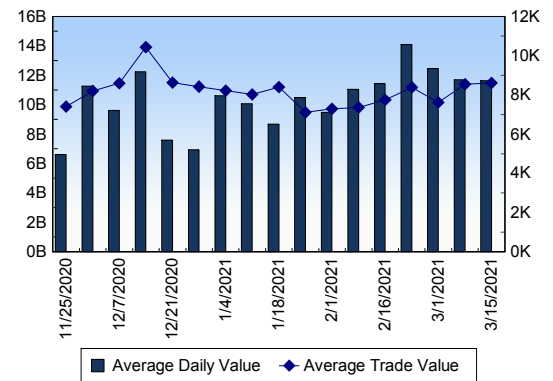
This report is published by TSX Inc. TSX Inc. does not guarantee either the completeness or the accuracy of this information. The information contained in this report is provided for informational purposes only and you agree not to rely upon the information contained in this report for any trading, business or financial purpose. These sheets are printed in Canada and issued by TSX Inc. under the express condition, to which everyone receiving or making use thereof assents, that no liability shall be incurred by TSX Inc. or its affiliated companies or any other vendor or donor, including, without limitation, for reliance on or for any errors or inaccuracies in this report. Neither TMX Group Limited, TSX Inc., nor any of their affiliated companies, guarantees the completeness of the information contained in this document and are not responsible for any errors or omission in or your use of, or reliance on, the information. This publication is under copyright. © 2015 TSX Inc. All rights reserved. Do not copy, distribute, sell or modify this publication without the prior written consent of TSX Inc. www.tmx.com/trading

TSX

Daily Volume	481,663,951
Daily Value	\$12,051,787,705
Daily Trades	1,308,899
Daily Symbols Traded	2,088

TSX ANONYMOUS TRADING

Daily Volume	197,732,140
Daily Value	\$4,803,698,974
Average Trade Size	294
% TSX Volume	41.05 %

TSX Volume**TSX Value (in Canadian Dollars)****Top 20 TSX Symbols by Volume**

Symbol	TSX Volume	TSX Value
CNQ	15,848,923	\$619,272,677
CVE	10,603,988	\$109,646,023
ITE	7,822,246	\$1,469,590
BCE	7,809,364	\$439,716,890
T	7,237,906	\$188,396,162
K	7,233,509	\$62,857,902
MFC	6,457,182	\$174,045,808
SU	6,369,695	\$182,610,018
H	6,352,483	\$183,459,605
SJR.B	6,256,139	\$216,828,823
BNAU	6,211,934	\$16,160,276
XBC	5,378,602	\$22,600,860
ENB	5,343,066	\$242,673,160
BBD.B	5,241,113	\$3,865,666
BTO	5,231,435	\$30,697,594
TD	4,656,159	\$383,857,710
CM	4,543,178	\$568,609,207
ABX	4,440,410	\$115,733,310
RY	4,350,961	\$506,273,081
BNS	4,350,786	\$344,309,802

Top 20 TSX Symbols by Value

Symbol	TSX Volume	TSX Value
CNQ	15,848,923	\$619,272,677
CM	4,543,178	\$568,609,207
RY	4,350,961	\$506,273,081
BCE	7,809,364	\$439,716,890
TD	4,656,159	\$383,857,710
BMO	3,206,275	\$354,596,505
BNS	4,350,786	\$344,309,802
SHOP	183,047	\$261,367,232
RCI.B	3,938,799	\$247,979,388
ENB	5,343,066	\$242,673,160
NA	2,661,433	\$234,059,231
SJR.B	6,256,139	\$216,828,823
T	7,237,906	\$188,396,162
H	6,352,483	\$183,459,605
SU	6,369,695	\$182,610,018
MFC	6,457,182	\$174,045,808
BAM.A	3,084,637	\$173,219,295
CNR	1,105,863	\$162,348,432
CP	340,683	\$160,566,135
TRP	2,405,034	\$139,815,616

ETF Trading

Daily Volume	30,174,553	Average Trade Value	\$9,777
Daily Value	\$677,571,642	Average Trade Size	435
# Trades	69,303	# of ETFs Traded	765

Top 10 ETFs by TSX Volume

Symbol	Market Volume	Market Value
XIU	3,350,168	\$95,225,519
XEG	1,597,862	\$12,591,463
BTCC.B	1,354,110	\$14,228,533
HNU	1,260,756	\$7,760,392
HQD	1,228,604	\$11,362,254
HND	1,159,748	\$12,035,759
DLR	805,283	\$10,115,236
HQU	788,634	\$32,701,464
ZEB	774,857	\$25,920,919
BTCC.U	529,350	\$5,697,563

Top 10 ETFs by TSX Value

Symbol	Market Volume	Market Value
XIU	3,350,168	\$95,225,519
HQU	788,634	\$32,701,464
ZQQ	315,028	\$29,794,306
ZEB	774,857	\$25,920,919
XFN	484,827	\$21,135,848
XQQ	193,319	\$19,777,171
HSU	332,606	\$14,962,184
BTCC.B	1,354,110	\$14,228,533
XEG	1,597,862	\$12,591,463
HND	1,159,748	\$12,035,759

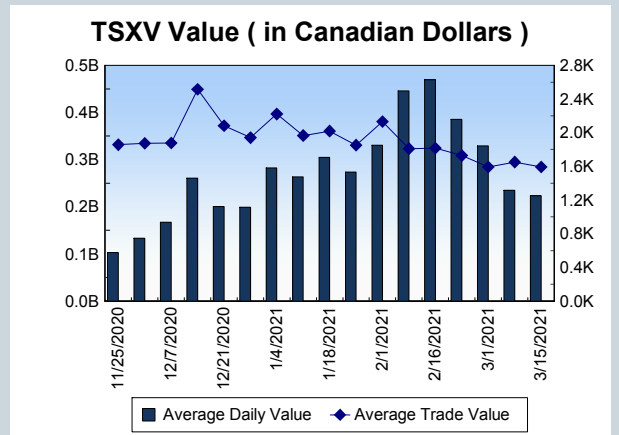
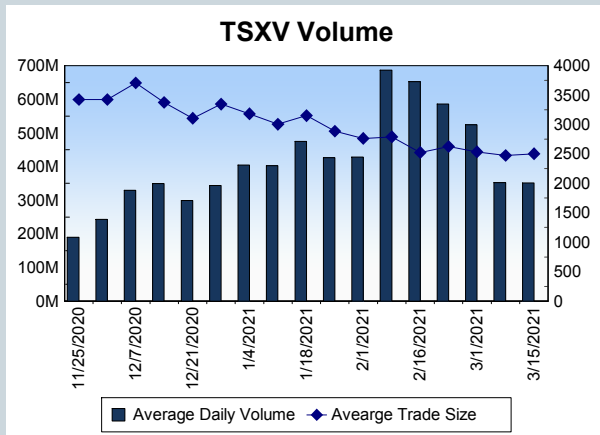
Block Trades	Non Block Trades
1,463	1,307,436

Top 5 Block Trade Brokers by Volume	
Broker	TSX Block Volume
SCOTIA CAPITAL INC.	31,034,900
GOLDMAN SACHS CANADA I	26,380,900
TD SECURITIES INC.	17,527,500
RBC CAPITAL MARKETS	16,767,300
NATIONAL BANK FINANCIAL	14,160,900

Top 5 Block Trade Symbols by Volume	
Symbol	TSX Block Volume
CNQ	13,227,000
CVE	6,532,400
H	5,351,400
BCE	5,347,700
T	4,442,400

TSXV	
Daily Volume	350,158,825
Daily Value	\$225,810,135
Daily Trades	134,410
Daily Symbols Traded	1,304

TSXV ANONYMOUS TRADING	
Daily Volume	132,403,661
Daily Value	\$102,442,303
Average Trade Size	2,851
% TSXV Volume	37.81%



Top 20 TSXV Symbols by Volume		
Symbol	TSXV Volume	TSXV Value
TK	30,515,554	\$7,922,955
SRI	18,396,180	\$2,878,077
CSTR	17,648,297	\$5,571,987
KLY	8,313,409	\$477,648
UNO.H	7,772,012	\$201,276
HIVE	4,206,097	\$19,132,093
YFI	3,772,590	\$683,951
FMS	3,593,193	\$548,961
ART	3,040,824	\$901,450
LBC	2,974,458	\$1,682,372
NDA	2,578,181	\$1,126,403
VPT	2,546,682	\$1,330,029
WATR	2,481,395	\$218,258
DAC	2,361,286	\$291,066
NUMI	2,152,148	\$2,468,989
ICO	2,147,141	\$229,420
DMGI	2,105,241	\$5,030,235
DOC	2,102,627	\$4,318,454
SOP.H	2,038,660	\$71,253
LMR	1,936,275	\$390,177

Top 20 TSXV Symbols by Value		
Symbol	TSXV Volume	TSXV Value
HIVE	4,206,097	\$19,132,093
BITF	1,583,246	\$10,023,401
TK	30,515,554	\$7,922,955
TOI	109,874	\$7,738,032
BNXA	1,084,582	\$7,664,974
FD	270,498	\$7,601,016
CSTR	17,648,297	\$5,571,987
CWRK	1,372,770	\$5,110,079
DMGI	2,105,241	\$5,030,235
GLDX	1,254,289	\$4,874,860
DOC	2,102,627	\$4,318,454
NNO	641,868	\$3,592,207
SRI	18,396,180	\$2,878,077
STC	691,520	\$2,490,122
NUMI	2,152,148	\$2,468,989
DSV	1,074,567	\$2,326,932
BNCH	1,487,665	\$2,152,329
ZEN	646,673	\$2,109,679
GBR	127,119	\$2,102,812
PGM	1,102,965	\$2,063,950

Dark TSX/TSXV Trading			
Volume	23,198,780	Daily Trades	94,754
Value	609,237,414	Daily Symbols Traded	1,524