

# DAILY REPORT



For more information, email [trading\\_sales@tsx.com](mailto:trading_sales@tsx.com)

June 9, 2025

Indices	June 9 Close	Previous Close	Change	% Change
S&P/TSX Composite Index	26,375.80	26,429.13		-0.20 %
S&P/TSX 60 Index	1,573.34	1,578.75		-0.34 %
S&P/TSX Venture Composite	725.90	721.60		0.59 %
S&P/TSX Completion Index	1,621.00	1,614.89		0.38 %
S&P/TSX Smallcap Index	898.19	892.52		0.64 %

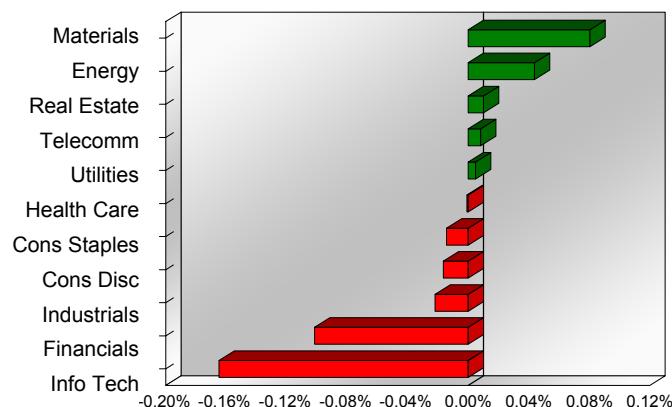
S&P/TSX Composite Index		
Advancers	Decliners	Unchanged
130	84	3

S&P/TSX Composite Index			
Top 10 Index Contributors		Top 10 Index Detractors	
Constituent	Index Contribution	Constituent	Index Contribution
CCO	30.01	SHOP	-41.55
ABX	7.95	ENB	-15.07
BEP.UN	3.96	TRP	-12.94
BBD.B	3.43	BAM	-8.63
NTR	3.31	TD	-5.27
NA	2.99	IFC	-4.97
BCE	2.80	QSR	-4.90
SU	2.29	BN	-4.81
GFL	2.24	CSU	-4.11
AGI	2.20	WCN	-3.26

S&P/TSX Composite Index			
Top 10 Advancers		Top 10 Decliners	
Constituent	Return	Constituent	Return
EDR	11.04%	LUG	-4.80%
CCO	10.71%	BAM	-4.33%
BEP.UN	7.46%	SHOP	-3.30%
BBD.B	5.35%	DPM	-3.16%
AYA	4.80%	PXT	-3.03%
NG	4.35%	NGEX	-2.92%
DML	3.95%	ENGH	-2.89%
EFR	3.48%	TXG	-2.85%
GMIN	2.68%	TRP	-2.62%
NVA	2.61%	OLA	-2.50%

S&P/TSX Composite Index				
Sector	# of Index Constituents	Weight	Market Cap (\$B)	Index Contribution
Materials	50	13.88 %	\$521.95	21.24
Energy	41	16.17 %	\$608.18	11.54
Real Estate	19	1.83 %	\$68.67	2.66
Communication Services	5	2.22 %	\$83.49	2.16
Utilities	15	3.84 %	\$144.59	1.24
Health Care	4	0.24 %	\$8.97	-0.22
Consumer Staples	10	3.85 %	\$144.81	-3.81
Consumer Discretionary	10	3.32 %	\$124.94	-4.36
Industrials	28	12.37 %	\$465.19	-5.81
Financials	25	32.73 %	\$1,230.77	-26.86
Information Technology	10	9.55 %	\$359.18	-43.57
<b>S&amp;P/TSX Composite Index</b>	<b>217</b>	<b>100.00 %</b>	<b>\$3,760.75</b>	<b>-45.78</b>

S&P/TSX Composite Index - Sectors Returns



This report is published by TSX Inc. TSX Inc. does not guarantee either the completeness or the accuracy of this information. The information contained in this report is provided for informational purposes only and you agree not to rely upon the information contained in this report for any trading, business or financial purpose. These sheets are printed in Canada and issued by TSX Inc. under the express condition, to which everyone receiving or making use thereof assents, that no liability shall be incurred by TSX Inc. or its affiliated companies or any other vendor or donor, including, without limitation, for reliance on or for any errors or inaccuracies in this report. Neither TMX Group Limited, TSX Inc., nor any of their affiliated companies, guarantees the completeness of the information contained in this document and are not responsible for any errors or omission in or your use of, or reliance on, the information. This publication is under copyright. © 2016 TSX Inc. All rights reserved. Do not copy, distribute, sell or modify this publication without the prior written consent of TSX Inc. <http://www.tsx.com/trading>

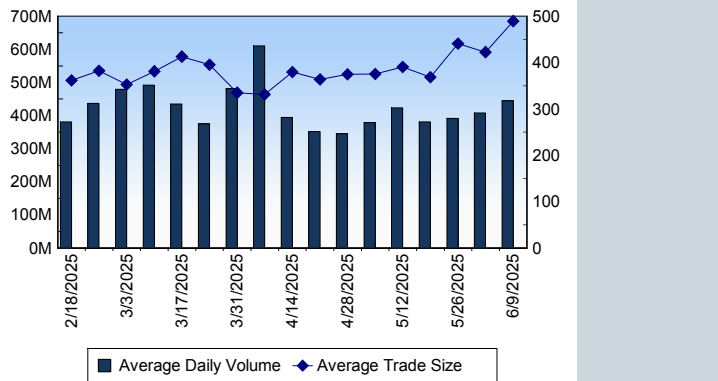
## TSX

Daily Volume	444,789,103
Daily Value	\$14,986,673,400
Daily Trades	908,778
Daily Symbols Traded	2,169

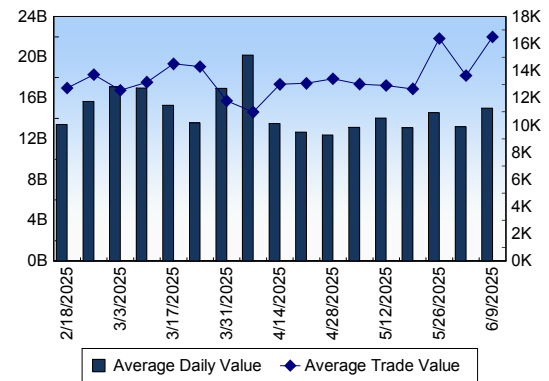
## TSX ANONYMOUS TRADING

Daily Volume	200,632,984
Daily Value	\$6,767,830,718
Average Trade Size	427
% TSX Volume	45.11 %

### TSX Volume



### TSX Value ( in Canadian Dollars )



### Top 20 TSX Symbols by Volume

Symbol	TSX Volume	TSX Value
CNQ	33,170,427	\$1,435,674,667
SU	22,316,042	\$1,128,430,034
TLO	10,563,961	\$2,322,921
CVE	9,823,852	\$184,319,986
MFC	9,682,869	\$428,728,383
T	7,840,645	\$175,447,943
GCU	7,773,895	\$1,964,993
TRP	7,282,597	\$493,553,812
ENB	7,217,915	\$453,459,081
ABX	7,021,036	\$194,860,198
HND	6,614,002	\$43,911,760
TECK.B	6,227,233	\$330,721,318
GWO	6,152,966	\$317,072,821
BNS	5,236,393	\$387,580,591
BCE	5,014,230	\$151,662,143
BTE	4,977,903	\$12,351,711
PPL	4,970,235	\$254,165,880
DML	4,434,499	\$10,662,928
WCP	4,093,484	\$36,037,840
KEY	3,971,444	\$166,526,414

### Top 20 TSX Symbols by Value

Symbol	TSX Volume	TSX Value
CNQ	33,170,427	\$1,435,674,667
SU	22,316,042	\$1,128,430,034
TRP	7,282,597	\$493,553,812
ENB	7,217,915	\$453,459,081
MFC	9,682,869	\$428,728,383
RY	2,230,255	\$389,445,727
BNS	5,236,393	\$387,580,591
SHOP	2,374,733	\$352,122,049
TECK.B	6,227,233	\$330,721,318
GWO	6,152,966	\$317,072,821
TD	2,826,788	\$271,313,012
CCO	2,826,386	\$257,904,943
PPL	4,970,235	\$254,165,880
CNR	1,755,474	\$251,263,802
NA	1,749,507	\$235,804,687
CM	2,211,544	\$207,953,448
TOU	3,062,470	\$196,890,398
ABX	7,021,036	\$194,860,198
BAM	2,478,217	\$187,257,130
H	3,782,474	\$185,722,679

### ETF Trading

Daily Volume	41,480,921	Average Trade Value	\$10,956
Daily Value	\$1,012,417,318	Average Trade Size	449
# Trades	92,408	# of ETFs Traded	1,131

### Top 10 ETFs by TSX Volume

Symbol	Market Volume	Market Value
HND	6,614,002	\$43,911,760
ZBK	2,481,385	\$87,122,571
XIU	1,727,200	\$68,621,765
TSLA	1,493,322	\$39,690,906
ZEB	1,173,707	\$52,162,488
HNU	1,133,537	\$36,859,549
HOD	1,108,023	\$6,896,324
BTCC	1,012,551	\$19,971,362
XEG	872,942	\$14,802,840
XGD	861,748	\$26,655,990

### Top 10 ETFs by TSX Value

Symbol	Market Volume	Market Value
ZBK	2,481,385	\$87,122,571
XIU	1,727,200	\$68,621,765
ZEB	1,173,707	\$52,162,488
HND	6,614,002	\$43,911,760
TSLA	1,493,322	\$39,690,906
HNU	1,133,537	\$36,859,549
VFV	188,480	\$27,549,222
XGD	861,748	\$26,655,990
NVDA	743,899	\$24,579,175
BTCC	1,012,551	\$19,971,362

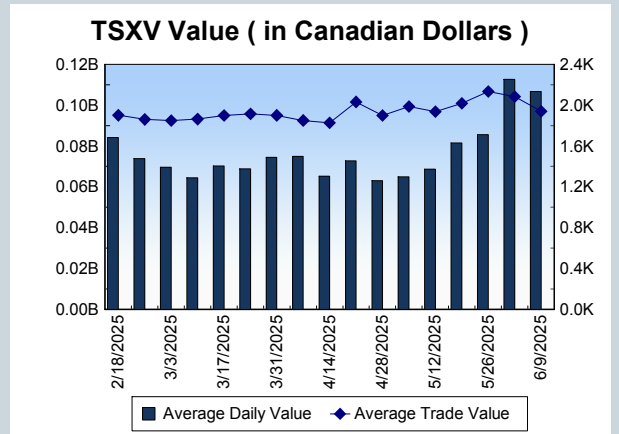
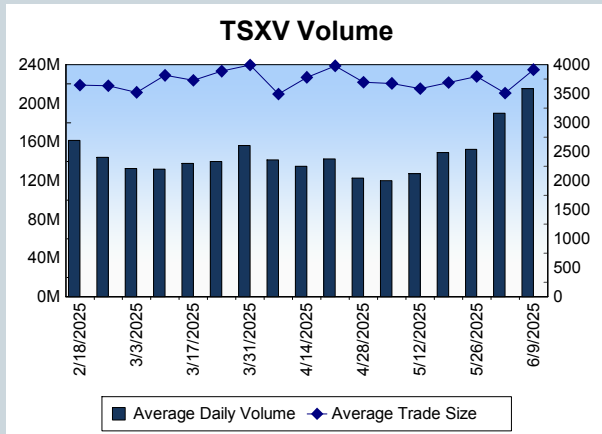
<b>Block Trades</b>	<b>Non Block Trades</b>
1,338	907,440

Top 5 Block Trade Brokers by Volume	
Broker	TSX Block Volume
RBC CAPITAL MARKETS	49,108,500
GOLDMAN SACHS CANADA I	40,714,500
BMO NESBITT BURNS INC.	40,122,450
MORGAN STANLEY CANADA	20,666,900
NATIONAL BANK FINANCIAL	20,279,800

Top 5 Block Trade Symbols by Volume	
Symbol	TSX Block Volume
CNQ	29,138,050
SU	20,109,400
MFC	8,219,400
CVE	7,008,800
GWO	5,583,700

TSXV	
Daily Volume	215,053,025
Daily Value	\$106,608,811
Daily Trades	54,951
Daily Symbols Traded	1,094

TSXV ANONYMOUS TRADING	
Daily Volume	125,352,634
Daily Value	\$63,338,810
Average Trade Size	4,380
% TSXV Volume	58.29%



Top 20 TSXV Symbols by Volume		
Symbol	TSXV Volume	TSXV Value
SVRS	8,390,264	\$1,062,692
FLT	5,985,209	\$930,376
GT	5,678,089	\$219,823
VCU	3,310,260	\$312,969
AIR	2,975,481	\$175,344
BCM	2,869,952	\$650,903
DEF	2,721,759	\$694,724
MJS	2,688,305	\$450,110
GRSL	2,519,268	\$449,144
GSVR	2,479,226	\$665,323
PGE	2,320,876	\$658,095
VO	2,279,276	\$259,745
BSK	2,262,500	\$135,767
CDPR	2,212,649	\$979,502
BRAU	1,965,612	\$213,738
CNC	1,937,465	\$2,095,908
GCX	1,906,447	\$62,379
QNC	1,891,455	\$2,736,773
AMK	1,694,900	\$195,585
BRC	1,659,857	\$655,345

Top 20 TSXV Symbols by Value		
Symbol	TSXV Volume	TSXV Value
TOI	50,633	\$8,710,678
ARTG	281,291	\$7,438,625
LMN	94,286	\$4,304,764
PNG	1,435,781	\$4,056,072
DV	626,080	\$3,213,988
QNC	1,891,455	\$2,736,773
FWZ	1,143,703	\$2,481,879
HIVE	783,207	\$2,189,146
CNC	1,937,465	\$2,095,908
SCZ	1,491,753	\$1,590,231
EU	419,631	\$1,314,202
CVV	1,382,783	\$1,212,501
NCI	489,589	\$1,129,354
SVRS	8,390,264	\$1,062,692
NCX	830,803	\$1,032,399
CDPR	2,212,649	\$979,502
SLI	383,488	\$940,223
FLT	5,985,209	\$930,376
ATX	382,645	\$910,880
ITR	389,102	\$905,112

Dark TSX/TSXV Trading			
Volume	33,907,170	Daily Trades	130,432
Value	1,044,229,371	Daily Symbols Traded	1,488