

# DAILY REPORT



For more information, email [trading\\_sales@tsx.com](mailto:trading_sales@tsx.com)

January 5, 2026

Indices	January 5 Close	Previous Close	Change	% Change
S&P/TSX Composite Index	32,219.95	31,883.37		1.06 %
S&P/TSX 60 Index	1,887.77	1,870.52		0.92 %
S&P/TSX Venture Composite	1,020.69	992.91		2.80 %
S&P/TSX Completion Index	2,121.93	2,088.62		1.59 %
S&P/TSX Smallcap Index	1,225.70	1,204.54		1.76 %

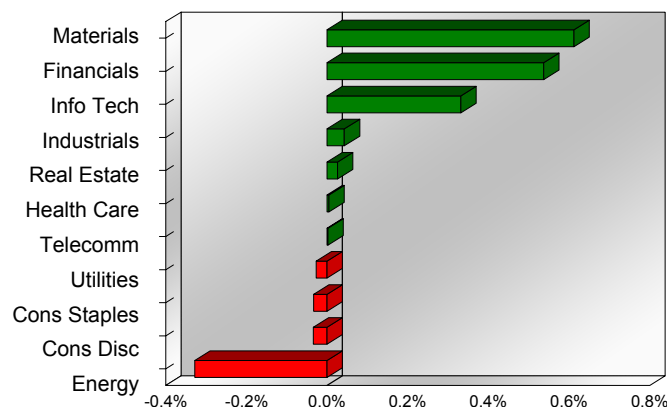
S&P/TSX Composite Index		
<b>Advancers</b>	<b>Decliners</b>	<b>Unchanged</b>
137	80	1

S&P/TSX Composite Index			
Top 10 Index Contributors		Top 10 Index Detractors	
Constituent	Index Contribution	Constituent	Index Contribution
SHOP	115.87	CNQ	-38.44
BN	48.20	ENB	-29.11
RY	36.28	CP	-13.77
ABX	30.12	DOL	-12.57
TD	29.28	CVE	-10.50
AEM	25.71	SU	-8.41
BMO	14.90	CLS	-8.30
WPM	14.25	TRP	-4.57
FM	11.15	ATD	-4.38
K	10.95	NTR	-4.28

S&P/TSX Composite Index			
Top 10 Advancers		Top 10 Decliners	
Constituent	Return	Constituent	Return
EFR	10.81%	ATH	-7.42%
BITF	10.64%	CNQ	-6.03%
LAC	9.77%	PXT	-5.29%
EDR	8.62%	HWX	-5.03%
TKO	8.21%	CVE	-4.82%
PPTA	8.05%	TVE	-4.72%
CS	7.89%	CURA	-4.47%
DML	7.00%	KEL	-4.46%
NGEX	6.91%	VET	-4.27%
AG	6.39%	IPCO	-4.13%

S&P/TSX Composite Index				
Sector	# of Index Constituents	Weight	Market Cap (\$B)	Index Contribution
Materials	56	18.45 %	\$850.96	195.05
Financials	24	33.26 %	\$1,533.87	171.16
Information Technology	10	9.71 %	\$447.78	105.61
Industrials	29	10.45 %	\$481.93	13.63
Real Estate	19	1.50 %	\$69.08	8.33
Health Care	4	0.27 %	\$12.49	1.39
Communication Services	5	1.92 %	\$88.39	0.73
Utilities	14	3.35 %	\$154.26	-8.56
Consumer Staples	10	3.27 %	\$151.00	-10.64
Consumer Discretionary	9	3.25 %	\$149.92	-10.92
Energy	38	14.56 %	\$671.43	-104.73
<b>S&amp;P/TSX Composite Index</b>	<b>218</b>	<b>100.00 %</b>	<b>\$4,611.12</b>	<b>361.05</b>

S&P/TSX Composite Index - Sectors Returns



This report is published by TSX Inc. TSX Inc. does not guarantee either the completeness or the accuracy of this information. The information contained in this report is provided for informational purposes only and you agree not to rely upon the information contained in this report for any trading, business or financial purpose. These sheets are printed in Canada and issued by TSX Inc. under the express condition, to which everyone receiving or making use thereof assents, that no liability shall be incurred by TSX Inc. or its affiliated companies or any other vendor or donor, including, without limitation, for reliance on or for any errors or inaccuracies in this report. Neither TMX Group Limited, TSX Inc., nor any of their affiliated companies, guarantees the completeness of the information contained in this document and are not responsible for any errors or omission in or your use of, or reliance on, the information. This publication is under copyright. © 2016 TSX Inc. All rights reserved. Do not copy, distribute, sell or modify this publication without the prior written consent of TSX Inc.

<http://www.tsx.com/trading>

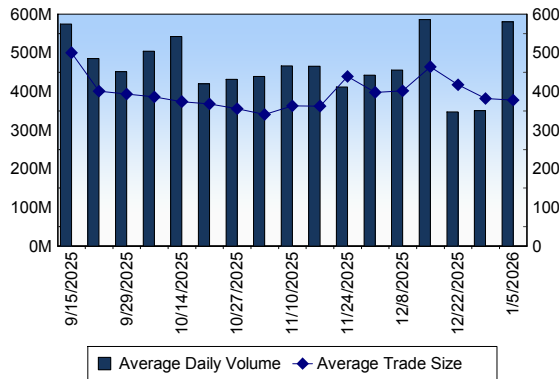
## TSX

Daily Volume	580,361,476
Daily Value	\$22,497,060,579
Daily Trades	1,536,022
Daily Symbols Traded	2,473

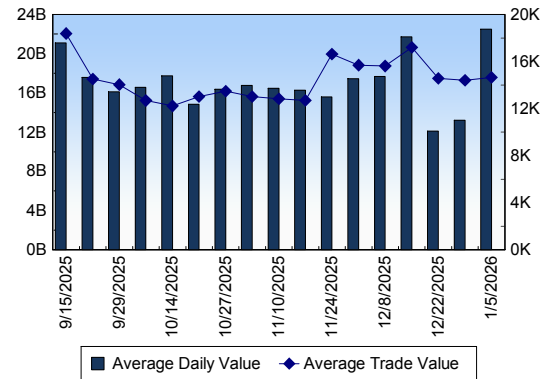
## TSX ANONYMOUS TRADING

Daily Volume	294,058,843
Daily Value	\$11,679,647,827
Average Trade Size	381
% TSX Volume	50.67 %

TSX Volume



TSX Value ( in Canadian Dollars )



Top 20 TSX Symbols by Volume

Symbol	TSX Volume	TSX Value
CNQ	29,698,845	\$1,313,128,157
CVE	24,646,471	\$558,228,172
TD	17,178,624	\$2,268,077,419
TRP	15,979,365	\$1,222,431,931
BTE	12,247,344	\$52,717,669
BNS	10,678,019	\$1,097,812,066
WCP	10,235,901	\$114,504,776
XEG	9,839,843	\$183,498,878
BTO	9,138,180	\$58,180,535
SU	8,785,822	\$535,292,099
ENB	7,212,719	\$462,396,775
CS	6,987,897	\$100,285,220
ATH	6,738,784	\$44,533,457
TLO	6,167,527	\$3,774,298
T	6,148,857	\$110,330,893
BITF	5,866,912	\$23,000,386
BCE	5,834,006	\$189,945,587
DML	4,775,728	\$20,792,103
HND	4,690,784	\$40,356,749
WEED	4,608,198	\$7,522,121

Top 20 TSX Symbols by Value

Symbol	TSX Volume	TSX Value
TD	17,178,624	\$2,268,077,419
CNQ	29,698,845	\$1,313,128,157
TRP	15,979,365	\$1,222,431,931
BNS	10,678,019	\$1,097,812,066
RY	3,627,653	\$862,613,512
CVE	24,646,471	\$558,228,172
SU	8,785,822	\$535,292,099
ENB	7,212,719	\$462,396,775
BMO	2,475,042	\$456,300,600
CM	3,550,411	\$452,851,112
NA	2,350,105	\$411,958,533
SHOP	1,699,411	\$386,688,548
AEM	1,223,432	\$298,611,900
BN	4,125,596	\$276,173,033
ABX	4,059,065	\$255,895,648
NTR	2,806,891	\$240,059,211
CP	2,310,114	\$231,498,945
FFH	88,387	\$229,694,675
CSU	70,047	\$224,968,541
CLS	505,193	\$205,396,167

## ETF Trading

Daily Volume	72,165,782	Average Trade Value	\$10,801
Daily Value	\$1,888,875,220	Average Trade Size	413
# Trades	174,887	# of ETFs Traded	1,434

Top 10 ETFs by TSX Volume

Symbol	Market Volume	Market Value
XEG	9,839,843	\$183,498,878
HND	4,690,784	\$40,356,749
HNU	2,433,754	\$34,355,453
XIU	1,809,027	\$86,209,888
DLR.U	1,154,915	\$11,706,012
HOD	1,143,005	\$6,454,566
SLVD	1,142,165	\$8,091,606
ZEB	1,139,440	\$67,629,600
HOU	926,806	\$8,315,686
XEQT	915,699	\$37,118,128

Top 10 ETFs by TSX Value

Symbol	Market Volume	Market Value
XEG	9,839,843	\$183,498,878
XIU	1,809,027	\$86,209,888
ZEB	1,139,440	\$67,629,600
VFV	333,935	\$56,272,637
HND	4,690,784	\$40,356,749
SLVU	295,153	\$37,412,235
XEQT	915,699	\$37,118,128
HNU	2,433,754	\$34,355,453
NVDA	763,867	\$32,778,528
CASH	626,583	\$31,320,550

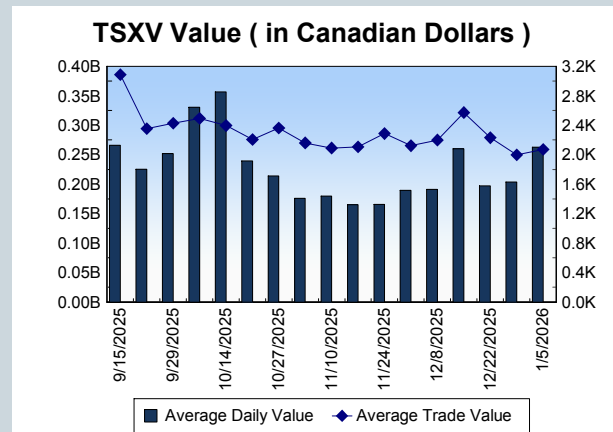
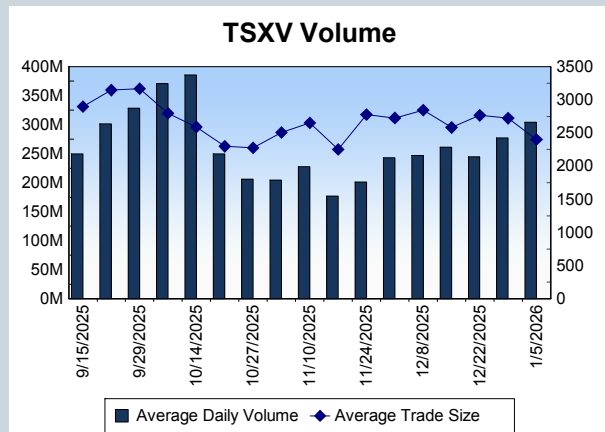
Block Trades	Non Block Trades
2,648	1,533,374

Top 5 Block Trade Brokers by Volume	
Broker	TSX Block Volume
RBC CAPITAL MARKETS	40,903,900
BMO NESBITT BURNS INC.	32,784,700
GOLDMAN SACHS CANADA I	30,880,800
TD SECURITIES INC.	29,962,600
CIBC WORLD MARKETS INC.	22,765,300

Top 5 Block Trade Symbols by Volume	
Symbol	TSX Block Volume
CNQ	14,630,100
TD	14,225,200
TRP	12,755,500
CVE	10,925,100
BNS	7,594,300

TSXV	
Daily Volume	304,137,571
Daily Value	\$262,604,719
Daily Trades	126,697
Daily Symbols Traded	1,212

TSXV ANONYMOUS TRADING	
Daily Volume	175,818,765
Daily Value	\$157,068,089
Average Trade Size	2,695
% TSXV Volume	57.81%



Top 20 TSXV Symbols by Volume		
Symbol	TSXV Volume	TSXV Value
INEO	9,990,450	\$149,863
RML	7,471,685	\$8,301,653
AGAG	6,173,162	\$5,779,671
ICM	4,418,152	\$848,876
SVRS	3,693,798	\$2,072,922
GRSL	3,628,763	\$1,590,883
GSVR	3,417,640	\$2,549,058
SSV	2,948,428	\$2,363,267
AGX	2,828,261	\$3,134,811
SM	2,773,958	\$5,063,506
SLVR	2,651,631	\$2,480,288
AIR	2,579,525	\$258,653
IFX	2,550,301	\$5,814,815
CH	2,522,278	\$480,316
PNG	2,442,452	\$17,089,795
ABI	2,347,894	\$273,489
VO	2,302,566	\$233,457
TUD	2,231,162	\$2,245,808
SCD	2,161,066	\$355,676
WRLG	2,143,347	\$2,277,503

Top 20 TSXV Symbols by Value		
Symbol	TSXV Volume	TSXV Value
PNG	2,442,452	\$17,089,795
RML	7,471,685	\$8,301,653
HIVE	1,682,432	\$6,825,445
ARTG	177,764	\$6,546,086
IFX	2,550,301	\$5,814,815
AGAG	6,173,162	\$5,779,671
GRZ	1,166,583	\$5,714,928
QNC	1,155,301	\$5,622,169
SM	2,773,958	\$5,063,506
SCZ	359,235	\$4,861,363
NCX	1,366,072	\$4,005,300
NFG	827,329	\$3,555,801
UCU	590,257	\$3,441,515
TOI	27,375	\$3,433,009
CNC	1,997,283	\$3,144,040
AGX	2,828,261	\$3,134,811
MAI	499,687	\$2,609,800
GSVR	3,417,640	\$2,549,058
SLVR	2,651,631	\$2,480,288
SSV	2,948,428	\$2,363,267

Dark TSX/TSXV Trading			
Volume	62,663,990	Daily Trades	225,566
Value	2,082,199,109	Daily Symbols Traded	2,036