

# DAILY REPORT



For more information, email [trading\\_sales@tsx.com](mailto:trading_sales@tsx.com)

January 21, 2026

Indices	January 21 Close	Previous Close	Change	% Change
S&P/TSX Composite Index	32,851.53	32,750.28		0.31 %
S&P/TSX 60 Index	1,903.48	1,896.43		0.37 %
S&P/TSX Venture Composite	1,094.62	1,093.33		0.12 %
S&P/TSX Completion Index	2,259.63	2,258.02		0.07 %
S&P/TSX Smallcap Index	1,336.34	1,334.72		0.12 %

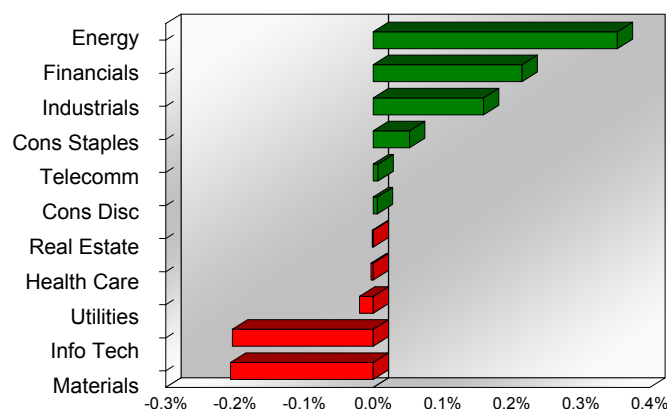
S&P/TSX Composite Index		
<b>Advancers</b>	<b>Decliners</b>	<b>Unchanged</b>
120	95	3

S&P/TSX Composite Index			
Top 10 Index Contributors		Top 10 Index Detractors	
Constituent	Index Contribution	Constituent	Index Contribution
CNQ	32.29	SHOP	-69.17
CCO	28.49	AEM	-17.67
BN	21.37	WPM	-17.06
CP	15.83	ABX	-14.77
SU	13.00	K	-14.05
TECK.B	12.62	DOL	-6.89
ATD	12.39	EQX	-5.66
CNR	11.58	PAAS	-5.59
CVE	11.01	IFC	-4.11
TD	10.47	LUG	-3.60

S&P/TSX Composite Index			
Top 10 Advancers		Top 10 Decliners	
Constituent	Return	Constituent	Return
VET	6.88%	VZLA	-7.08%
ATH	6.86%	WDO	-6.83%
MX	6.30%	SSRM	-5.33%
CCO	5.55%	EQX	-5.04%
TECK.B	5.53%	LUG	-4.52%
IPCO	5.33%	VNP	-4.50%
DOO	4.92%	PPTA	-4.27%
GFL	4.73%	SHOP	-4.24%
GIL	4.63%	EFR	-4.18%
ELD	4.59%	TA	-4.15%

S&P/TSX Composite Index				
Sector	# of Index Constituents	Weight	Market Cap (\$B)	Index Contribution
Energy	38	15.41 %	\$724.48	115.60
Financials	24	31.93 %	\$1,501.07	70.46
Industrials	29	10.44 %	\$490.90	52.21
Consumer Staples	10	3.25 %	\$153.03	17.22
Communication Services	5	1.90 %	\$89.44	2.20
Consumer Discretionary	9	3.20 %	\$150.46	1.94
Real Estate	19	1.49 %	\$70.07	-0.41
Health Care	4	0.27 %	\$12.52	-1.10
Utilities	14	3.32 %	\$156.11	-6.45
Information Technology	10	8.33 %	\$391.80	-66.69
Materials	56	20.45 %	\$961.67	-67.62
<b>S&amp;P/TSX Composite Index</b>	<b>218</b>	<b>100.00 %</b>	<b>\$4,701.55</b>	<b>117.36</b>

S&P/TSX Composite Index - Sectors Returns



This report is published by TSX Inc. TSX Inc. does not guarantee either the completeness or the accuracy of this information. The information contained in this report is provided for informational purposes only and you agree not to rely upon the information contained in this report for any trading, business or financial purpose. These sheets are printed in Canada and issued by TSX Inc. under the express condition, to which everyone receiving or making use thereof assents, that no liability shall be incurred by TSX Inc. or its affiliated companies or any other vendor or donor, including, without limitation, for reliance on or for any errors or inaccuracies in this report. Neither TMX Group Limited, TSX Inc., nor any of their affiliated companies, guarantees the completeness of the information contained in this document and are not responsible for any errors or omission in or your use of, or reliance on, the information. This publication is under copyright. © 2016 TSX Inc. All rights reserved. Do not copy, distribute, sell or modify this publication without the prior written consent of TSX Inc.

<http://www.tsx.com/trading>

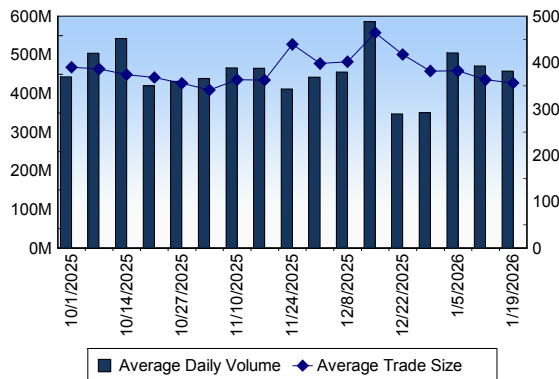
## TSX

Daily Volume	596,235,561
Daily Value	\$22,917,878,946
Daily Trades	1,586,524
Daily Symbols Traded	2,462

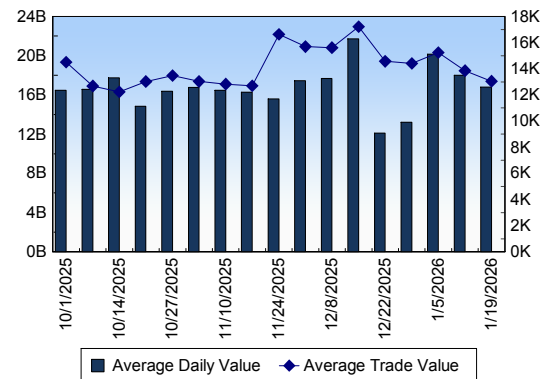
## TSX ANONYMOUS TRADING

Daily Volume	312,699,430
Daily Value	\$12,182,375,303
Average Trade Size	378
% TSX Volume	52.45 %

TSX Volume



TSX Value ( in Canadian Dollars )



Top 20 TSX Symbols by Volume

Symbol	TSX Volume	TSX Value
FF	21,919,832	\$13,671,643
HND	17,404,398	\$80,930,152
BTO	16,324,541	\$112,014,289
CNQ	10,405,052	\$515,172,089
BTE	9,924,710	\$47,344,622
ENB	9,563,749	\$625,385,762
WCP	9,461,233	\$112,184,259
RY	9,068,819	\$2,104,120,222
CVE	7,634,982	\$194,127,513
TRP	6,800,770	\$507,607,760
BNS	6,221,060	\$635,115,142
ARX	6,017,036	\$152,712,252
K	6,015,246	\$299,653,913
CS	5,952,324	\$87,455,890
XEG	5,943,604	\$123,050,493
DSV	5,908,796	\$57,935,883
HNU	5,560,897	\$109,949,956
BITF	5,443,150	\$20,354,688
T	5,406,956	\$99,998,874
TD	5,236,584	\$677,813,121

Top 20 TSX Symbols by Value

Symbol	TSX Volume	TSX Value
RY	9,068,819	\$2,104,120,222
FFH	296,424	\$714,444,227
TD	5,236,584	\$677,813,121
BNS	6,221,060	\$635,115,142
ENB	9,563,749	\$625,385,762
CNQ	10,405,052	\$515,172,089
TRP	6,800,770	\$507,607,760
CM	3,895,224	\$492,779,876
SHOP	2,507,717	\$485,980,573
CSU	155,566	\$417,074,545
AEM	1,307,938	\$374,942,389
ABX	5,110,215	\$350,400,510
NA	1,993,316	\$332,613,280
BMO	1,726,863	\$323,777,750
K	6,015,246	\$299,653,913
CLS	663,994	\$283,337,952
SU	3,970,704	\$276,718,278
FNV	724,563	\$253,121,018
CCO	1,517,666	\$252,994,539
CP	2,269,312	\$224,825,381

## ETF Trading

Daily Volume	97,148,238	Average Trade Value	\$13,335
Daily Value	\$2,572,167,386	Average Trade Size	504
# Trades	192,894	# of ETFs Traded	1,440

Top 10 ETFs by TSX Volume

Symbol	Market Volume	Market Value
HND	17,404,398	\$80,930,152
XEG	5,943,604	\$123,050,493
HNU	5,560,897	\$109,949,956
XIU	3,419,409	\$164,803,579
SLVD	1,736,592	\$7,817,973
DLR	1,509,970	\$21,173,743
HOD	1,481,461	\$7,516,818
QQD	1,429,977	\$9,502,838
ZEB	1,345,069	\$79,149,328
GDxD	1,292,405	\$14,790,116

Top 10 ETFs by TSX Value

Symbol	Market Volume	Market Value
SLVU	1,078,581	\$196,101,917
XIU	3,419,409	\$164,803,579
XEG	5,943,604	\$123,050,493
HNU	5,560,897	\$109,949,956
HND	17,404,398	\$80,930,152
VFV	476,500	\$80,005,047
ZEB	1,345,069	\$79,149,328
XGD	1,042,485	\$63,775,770
NVDA	1,080,845	\$44,472,506
VEQT	695,800	\$38,402,026

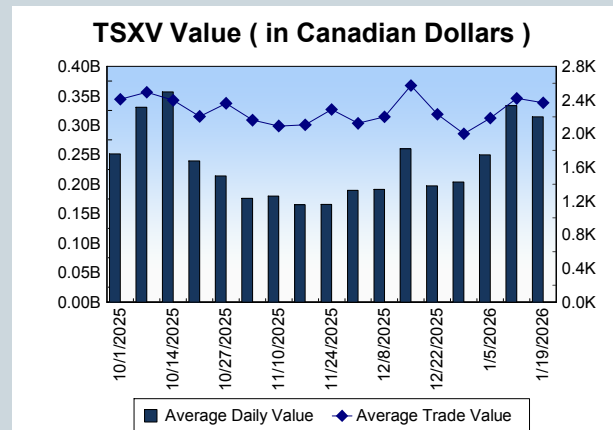
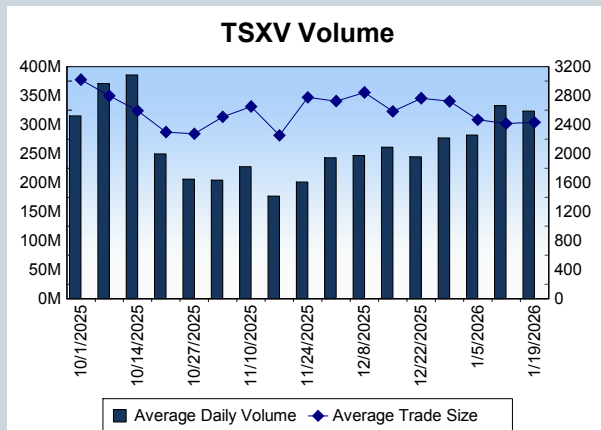
Block Trades	Non Block Trades
2,694	1,583,830

Top 5 Block Trade Brokers by Volume	
Broker	TSX Block Volume
TD SECURITIES INC.	46,415,900
BMO NESBITT BURNS INC.	36,462,100
MERRILL LYNCH CANADA LT	32,307,200
CIBC WORLD MARKETS INC.	16,245,600
GOLDMAN SACHS CANADA I	15,444,400

Top 5 Block Trade Symbols by Volume	
Symbol	TSX Block Volume
FF	10,043,500
BTO	7,475,500
ENB	7,136,900
RY	7,086,400
TRP	5,253,100

TSXV	
Daily Volume	331,882,002
Daily Value	\$329,465,217
Daily Trades	143,982
Daily Symbols Traded	1,194

TSXV ANONYMOUS TRADING	
Daily Volume	197,489,648
Daily Value	\$213,942,726
Average Trade Size	2,411
% TSXV Volume	59.51%



Top 20 TSXV Symbols by Volume		
Symbol	TSXV Volume	TSXV Value
GPUS	12,054,184	\$789,421
GSVR	6,683,266	\$5,484,011
AUXX	5,689,092	\$4,459,316
SHL	5,415,506	\$3,160,297
AAZ	4,946,699	\$399,622
SCD	4,930,096	\$1,356,362
BHS	4,270,101	\$413,185
TMET	4,088,375	\$435,261
NOB	3,222,627	\$778,796
FLT	3,144,736	\$2,048,028
PEMC	3,115,279	\$346,958
GRSL	3,077,652	\$1,654,609
SVRS	3,044,339	\$1,702,110
XXIX	2,667,958	\$326,590
SMN	2,647,911	\$397,492
FUU	2,614,025	\$524,541
ADY	2,608,685	\$868,352
SLVR	2,590,122	\$2,820,426
MMN	2,579,681	\$82,649
INEO	2,503,664	\$40,058

Top 20 TSXV Symbols by Value		
Symbol	TSXV Volume	TSXV Value
SCZ	1,141,439	\$19,426,939
TOI	124,511	\$13,909,091
PNG	1,822,242	\$13,516,964
ARTG	291,836	\$12,272,590
HIVE	1,805,953	\$8,052,802
LMN	295,212	\$6,985,880
MAI	1,043,777	\$6,566,257
GSVR	6,683,266	\$5,484,011
HMMC	908,207	\$5,163,813
SM	1,737,351	\$4,721,398
AUXX	5,689,092	\$4,459,316
GSKR	1,491,980	\$4,191,567
ASE	2,279,677	\$4,138,058
BRC	2,319,697	\$3,856,469
UCU	431,719	\$3,838,850
EU	857,606	\$3,827,027
CNC	1,591,311	\$3,688,928
DV	449,909	\$3,251,313
SHL	5,415,506	\$3,160,297
NFG	735,005	\$3,152,199

Dark TSX/TSXV Trading			
Volume	65,203,130	Daily Trades	250,147
Value	2,407,134,476	Daily Symbols Traded	1,913