

# DAILY REPORT



For more information, email [trading\\_sales@tsx.com](mailto:trading_sales@tsx.com)

January 29, 2026

Indices	January 29 Close	Previous Close	Change	% Change
S&P/TSX Composite Index	33,016.13	33,176.07		-0.48 %
S&P/TSX 60 Index	1,907.60	1,909.13		-0.08 %
S&P/TSX Venture Composite	1,108.29	1,148.10		-3.47 %
S&P/TSX Completion Index	2,295.37	2,341.30		-1.96 %
S&P/TSX Smallcap Index	1,373.09	1,405.38		-2.30 %

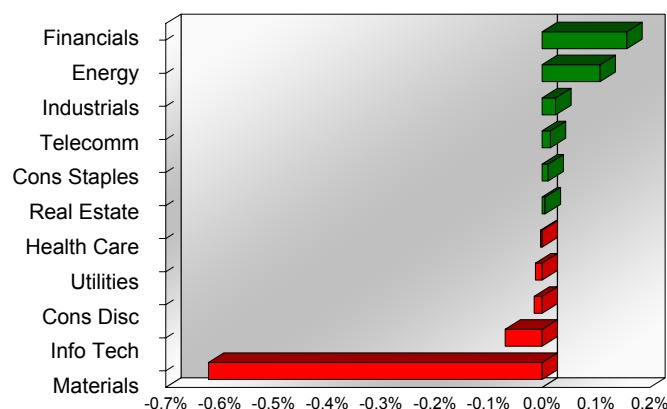
S&P/TSX Composite Index		
<b>Advancers</b>	<b>Decliners</b>	<b>Unchanged</b>
90	128	0

S&P/TSX Composite Index			
Top 10 Index Contributors		Top 10 Index Detractors	
Constituent	Index Contribution	Constituent	Index Contribution
SHOP	43.53	CLS	-44.16
CP	33.18	AEM	-41.18
RY	15.78	ABX	-19.33
TD	13.09	WPM	-19.09
CM	12.58	K	-18.16
CNQ	11.74	BN	-15.81
BMO	10.56	FNV	-12.91
MFC	9.98	CSU	-11.84
ENB	9.74	PAAS	-11.46
CNR	9.68	AGI	-9.82

S&P/TSX Composite Index			
Top 10 Advancers		Top 10 Decliners	
Constituent	Return	Constituent	Return
VNP	19.05%	VZLA	-14.90%
RCI.B	5.69%	CLS	-13.54%
CP	5.13%	OLA	-13.52%
ERO	4.66%	GMIN	-12.28%
ATH	4.40%	EFR	-10.55%
IPCO	3.66%	LAC	-10.09%
SJ	3.63%	AYA	-8.79%
TKO	3.57%	TXG	-7.96%
CEU	3.26%	SII	-7.76%
NGEX	3.23%	PPTA	-7.37%

S&P/TSX Composite Index				
Sector	# of Index Constituents	Weight	Market Cap (\$B)	Index Contribution
Financials	24	31.38 %	\$1,482.85	52.19
Energy	38	15.95 %	\$753.51	35.65
Industrials	29	10.25 %	\$484.50	8.28
Communication Services	5	1.92 %	\$90.60	4.99
Consumer Staples	10	3.12 %	\$147.47	3.60
Real Estate	19	1.46 %	\$68.91	1.80
Health Care	4	0.25 %	\$11.67	-0.99
Utilities	14	3.33 %	\$157.30	-4.15
Consumer Discretionary	9	3.04 %	\$143.73	-4.91
Information Technology	10	8.14 %	\$384.50	-22.98
Materials	56	21.16 %	\$1,000.07	-205.92
<b>S&amp;P/TSX Composite Index</b>	<b>218</b>	<b>100.00 %</b>	<b>\$4,725.11</b>	<b>-132.43</b>

S&P/TSX Composite Index - Sectors Returns



This report is published by TSX Inc. TSX Inc. does not guarantee either the completeness or the accuracy of this information. The information contained in this report is provided for informational purposes only and you agree not to rely upon the information contained in this report for any trading, business or financial purpose. These sheets are printed in Canada and issued by TSX Inc. under the express condition, to which everyone receiving or making use thereof assents, that no liability shall be incurred by TSX Inc. or its affiliated companies or any other vendor or donor, including, without limitation, for reliance on or for any errors or inaccuracies in this report. Neither TMX Group Limited, TSX Inc., nor any of their affiliated companies, guarantees the completeness of the information contained in this document and are not responsible for any errors or omission in or your use of, or reliance on, the information. This publication is under copyright. © 2016 TSX Inc. All rights reserved. Do not copy, distribute, sell or modify this publication without the prior written consent of TSX Inc.

<http://www.tsx.com/trading>

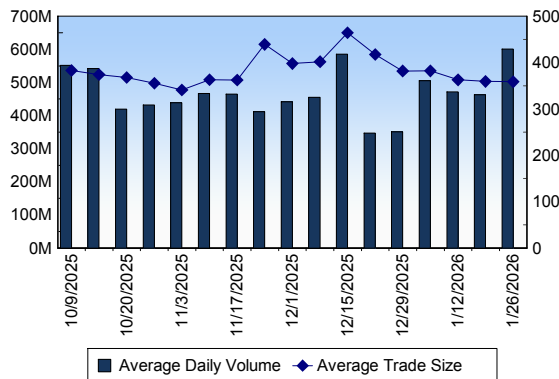
## TSX

Daily Volume	712,683,489
Daily Value	\$28,314,354,992
Daily Trades	2,083,241
Daily Symbols Traded	2,536

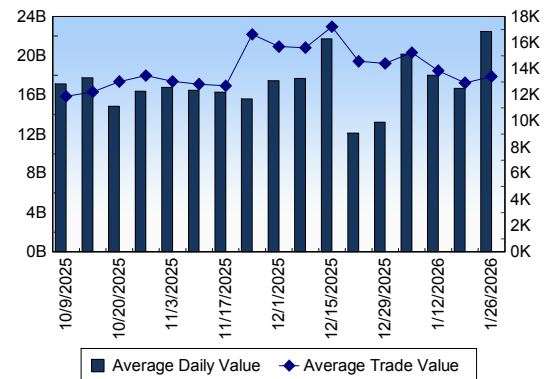
## TSX ANONYMOUS TRADING

Daily Volume	343,284,306
Daily Value	\$14,503,023,182
Average Trade Size	339
% TSX Volume	48.17 %

TSX Volume



TSX Value ( in Canadian Dollars )



Top 20 TSX Symbols by Volume

Symbol	TSX Volume	TSX Value
HND	16,308,436	\$60,524,280
BTO	11,976,508	\$90,089,479
CVE	11,071,567	\$304,507,390
ENB	10,927,737	\$725,423,663
K	10,310,953	\$508,600,979
BTE	9,500,534	\$45,303,010
IVN	9,311,314	\$176,852,448
FF	9,295,069	\$7,342,588
CS	9,253,297	\$155,467,447
MFC	9,129,099	\$473,987,073
TD	8,556,508	\$1,093,089,557
CNQ	8,366,683	\$427,474,713
WCP	7,819,082	\$99,559,382
SU	7,273,554	\$527,972,416
TRP	7,149,792	\$570,749,970
T	7,108,789	\$133,943,516
ABX	6,576,926	\$463,001,395
RY	6,285,844	\$1,427,415,784
FM	5,921,921	\$251,325,105
BNS	5,898,244	\$607,473,637

Top 20 TSX Symbols by Value

Symbol	TSX Volume	TSX Value
RY	6,285,844	\$1,427,415,784
TD	8,556,508	\$1,093,089,557
BMO	5,171,997	\$983,948,513
ENB	10,927,737	\$725,423,663
CM	4,985,463	\$638,376,148
CLS	1,560,158	\$629,064,918
BNS	5,898,244	\$607,473,637
TRP	7,149,792	\$570,749,970
SHOP	2,867,688	\$551,286,887
SU	7,273,554	\$527,972,416
K	10,310,953	\$508,600,979
MFC	9,129,099	\$473,987,073
ABX	6,576,926	\$463,001,395
CNQ	8,366,683	\$427,474,713
AEM	1,450,850	\$421,609,079
CP	3,982,572	\$403,970,985
FFH	175,924	\$391,511,968
NA	2,366,704	\$387,028,052
CSU	149,194	\$379,378,248
BN	5,483,143	\$345,056,488

## ETF Trading

Daily Volume	127,717,802	Average Trade Value	\$12,459
Daily Value	\$3,624,419,173	Average Trade Size	439
# Trades	290,899	# of ETFs Traded	1,512

Top 10 ETFs by TSX Volume

Symbol	Market Volume	Market Value
HND	16,308,436	\$60,524,280
SLVD	5,641,407	\$14,696,726
XIU	4,529,992	\$218,453,518
XEG	3,899,321	\$84,468,084
MSFT	3,419,910	\$104,065,319
META	2,770,009	\$108,353,504
MSTE	2,640,639	\$10,855,224
ZEB	2,324,027	\$135,708,305
HNU	2,279,795	\$53,437,205
HOD	2,077,519	\$8,906,686

Top 10 ETFs by TSX Value

Symbol	Market Volume	Market Value
XIU	4,529,992	\$218,453,518
SLVU	772,978	\$203,277,338
ZEB	2,324,027	\$135,708,305
XGD	1,777,073	\$112,940,005
META	2,770,009	\$108,353,504
MSFT	3,419,910	\$104,065,319
XEG	3,899,321	\$84,468,084
VFV	454,050	\$75,517,757
SVR	1,402,235	\$74,541,407
CBIL	1,247,455	\$62,480,758

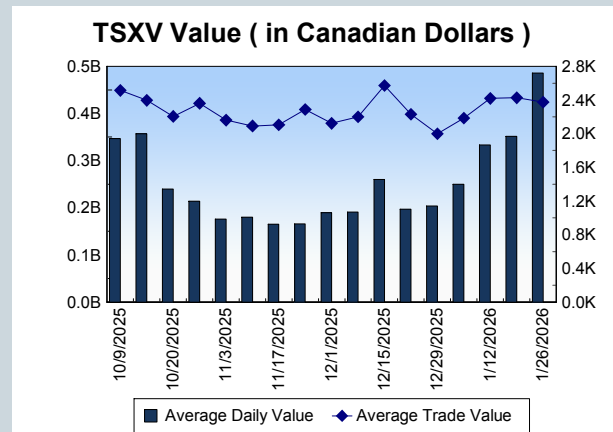
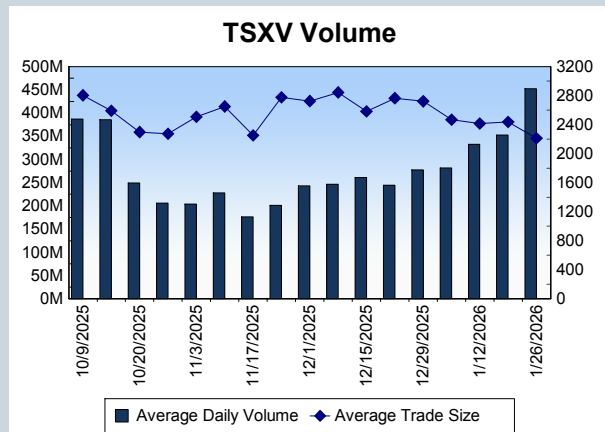
Block Trades	Non Block Trades
2,775	2,080,466

Top 5 Block Trade Brokers by Volume	
Broker	TSX Block Volume
TD SECURITIES INC.	42,069,100
BMO NESBITT BURNS INC.	32,455,900
CIBC WORLD MARKETS INC.	31,481,100
SCOTIA CAPITAL INC.	22,857,600
RBC CAPITAL MARKETS	21,442,150

Top 5 Block Trade Symbols by Volume	
Symbol	TSX Block Volume
ENB	7,507,300
MFC	6,294,600
TRP	5,151,000
TD	4,921,000
RY	3,871,000

TSXV	
Daily Volume	481,299,347
Daily Value	\$523,016,156
Daily Trades	230,337
Daily Symbols Traded	1,257

TSXV ANONYMOUS TRADING	
Daily Volume	272,184,501
Daily Value	\$330,960,890
Average Trade Size	2,133
% TSXV Volume	56.55%



Top 20 TSXV Symbols by Volume		
Symbol	TSXV Volume	TSXV Value
AUXX	10,622,259	\$13,758,308
BBB	10,217,887	\$1,327,158
FUU	9,386,502	\$2,451,945
SVRS	7,494,875	\$5,295,803
STND	6,214,237	\$727,300
ADY	6,160,692	\$2,427,010
GSVR	5,866,869	\$5,340,526
SLVR	5,782,544	\$6,387,584
GRSL	5,139,685	\$2,849,967
DEF	4,156,174	\$1,533,826
TSLV	3,969,109	\$571,574
GPUS	3,884,547	\$273,501
VLI	3,789,467	\$94,878
WRLG	3,778,313	\$5,046,769
SASK	3,771,077	\$4,295,025
ABI	3,533,104	\$372,790
KS	3,510,196	\$166,200
BCM	3,270,878	\$2,931,731
IPT	3,188,826	\$1,497,287
AFM	3,184,160	\$4,445,835

Top 20 TSXV Symbols by Value		
Symbol	TSXV Volume	TSXV Value
ARTG	818,069	\$34,833,467
PNG	2,937,590	\$24,862,902
TOI	241,361	\$24,383,917
SCZ	955,033	\$17,935,754
AUXX	10,622,259	\$13,758,308
UCU	1,456,296	\$13,192,669
GSKR	2,411,150	\$10,347,087
ELE	272,995	\$8,423,119
ATX	1,816,252	\$7,886,829
HIVE	1,831,959	\$6,848,620
CNC	3,115,015	\$6,388,941
SLVR	5,782,544	\$6,387,584
SLI	947,776	\$6,315,742
ASE	2,982,846	\$6,002,759
MKO	564,847	\$5,864,201
NFG	1,380,925	\$5,842,208
MAI	904,276	\$5,650,171
QNC	1,099,225	\$5,472,365
GSVR	5,866,869	\$5,340,526
SVRS	7,494,875	\$5,295,803

Dark TSX/TSXV Trading			
Volume	99,430,920	Daily Trades	405,404
Value	3,580,642,824	Daily Symbols Traded	1,940